



3 Beds, Semi-Detached, Freehold, £320,000

Whiterock Close, Graigwen

Three Estate Agents Talbot Green are delighted to present this spacious three-bedroom dormer bungalow, situated in the sought-after area of Graigwen, Pontypridd.

Features

- THREE DOUBLE BEDROOM
- LARGE LOUNGE/DINER
- EN-SUITE
- OFF ROAD PARKING
- LARGE REAR GARDEN
- SOUGHT AFTER LOCATION

Three Estate Agents Talbot Green are delighted to present this spacious three-bedroom dormer bungalow, situated in the sought-after area of Graigwen, Pontypridd.

This well-presented home offers spacious and versatile living, beginning with an inviting entrance porch, which leads into a welcoming hallway providing access to all main rooms.

The lounge/diner is a bright and airy space, featuring a stylish fireplace, carpeted flooring, a front window and patio doors to the rear allow natural light to flood the room.

At the rear of the property, the galley-style kitchen boasts ample storage, ceramic-tiled flooring and walls, as well as an integrated oven, hob, and extractor hood.

Also on the ground floor, you'll find the first of three double bedrooms, complete with carpeted flooring and built-in wardrobes.

The family bathroom features ceramic-tiled walls and flooring, a vanity unit with a washbasin, and a shower over the bath.

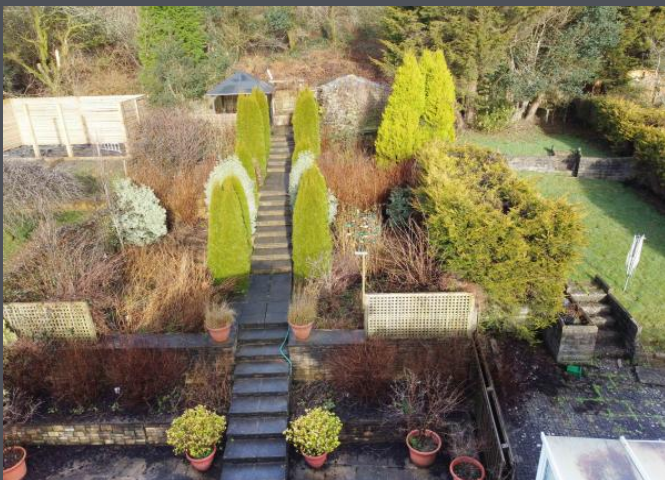
Moving to the first floor, you'll discover two further generously sized bedrooms, both with built-in wardrobes and carpeted flooring. The master bedroom benefits from its own spacious en-suite, which includes a vanity unit with a washbasin, ceramic-tiled walls, and a large walk-in shower.

Outside the front garden is neatly laid to patio, offering off-road parking and bordered by mature shrubs. The extensive rear garden is a true highlight, featuring multiple tiers, patio areas, lush greenery, a large wooden shed, and a gazebo—perfect for relaxing or entertaining. Backing onto woodland, this home enjoys a wonderfully private setting.

This spacious home is located in









The image displays two architectural floor plans. The top plan is the Ground Floor, showing a layout with a Kitchen, Dining Room, Living Room, two Bedrooms, a Bathroom, and a Porch. The bottom plan is the 1st Floor, showing a layout with two Bedrooms, a Bathroom, and a Terrace. Both plans include dimensions in feet and inches, and meters and centimeters.

GROUND FLOOR
652 sq ft, (60.0 sq.m.) approx.

1ST FLOOR
406 sq ft, (37.7 sq.m.) approx.

GROUND FLOOR: KITCHEN 12'0" x 9'0" (3.66m x 2.74m), DINING ROOM 12'0" x 10'0" (3.66m x 3.05m), LIVING ROOM 12'0" x 13'0" (3.66m x 3.96m), BEDROOM 11'0" x 7'0" (3.35m x 2.13m), BATHROOM 5'0" x 5'0" (1.52m x 1.52m), PORCH, HALL, CLOSET.

1ST FLOOR: BEDROOM 11'0" x 10'0" (3.35m x 3.05m), BEDROOM 12'0" x 11'0" (3.66m x 3.35m), BATHROOM 5'0" x 5'0" (1.52m x 1.52m), TERRACE 5'0" x 5'0" (1.52m x 1.52m), HALL, CLOSET.

TOTAL FLOOR AREA: 1058 sq ft (97.3 sq.m.) approx.

Values given should not be taken as values for accuracy of the finished completed work. Measurements are taken from the center of the walls. The above dimensions are approximate and are not intended to be used for construction purposes. The building, structure and specifications shown here are based on the ground plan. All dimensions are approximate and may vary.