

Morgans

PROPERTY

10 An Gleann Apartments Main Street, Glenfarg, PH2 9FY
Offers Over £280,000







Nestled in the charming village of Glenfarg, this luxury penthouse apartment at 10 An Gleann on Main Street offers an exquisite living experience in an exclusive development. Upon entering, you are greeted by a well-maintained entrance hallway that sets the tone for the elegance found throughout the property. The heart of this home is the open plan lounge, dining, and kitchen area, which is perfect for both entertaining and everyday living. This spacious layout is complemented by a private balcony, providing a delightful outdoor space to enjoy the fresh air and picturesque views. The apartment features two generously sized bedrooms, each with its own en-suite bathroom, ensuring comfort and privacy for all residents. The principal bedroom boasts a dressing area, adding a touch of luxury and convenience to your daily routine. Additionally, a separate utility room and a convenient w.c. enhance the functionality of this splendid home. For those who value security and convenience, the property includes a secure underground garage, providing parking for both residents and visitors. This feature adds an extra layer of peace of mind, allowing you to enjoy your home without worry. This penthouse apartment is not just a residence; it is a lifestyle choice, offering modern living in a serene setting. With its thoughtful design and high-quality finishes, this property is ideal for those seeking a sophisticated yet comfortable home in the heart of Glenfarg.





EXTRAS INCLUDED IN THE SALE

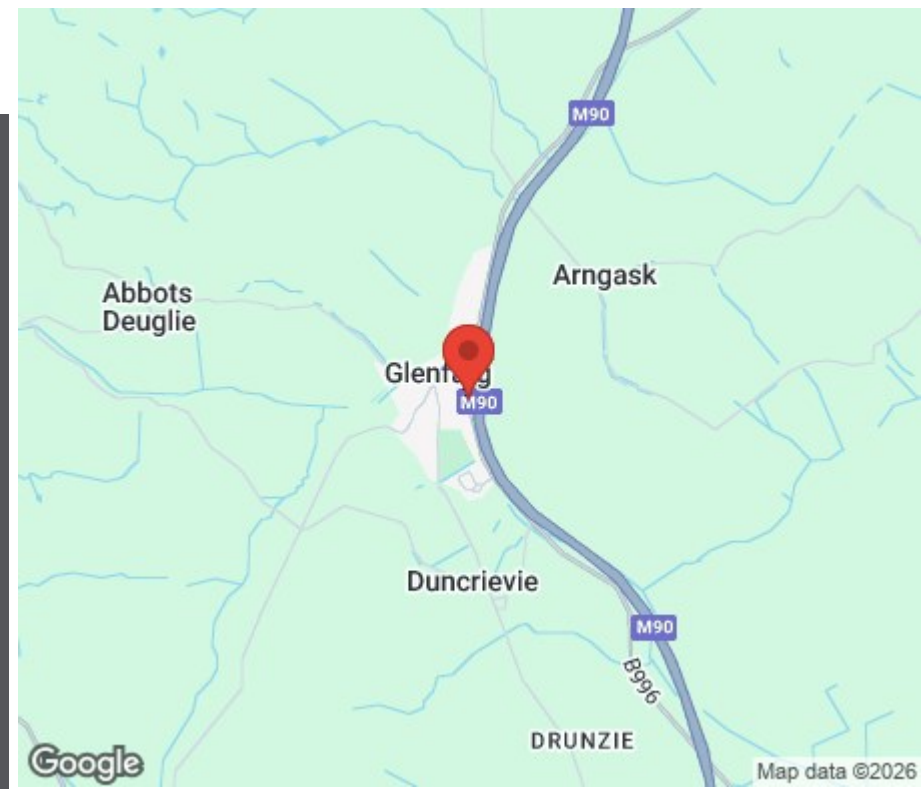
All fitted floor coverings, light fittings and integrated appliances are included in the sale.

VIEWINGS

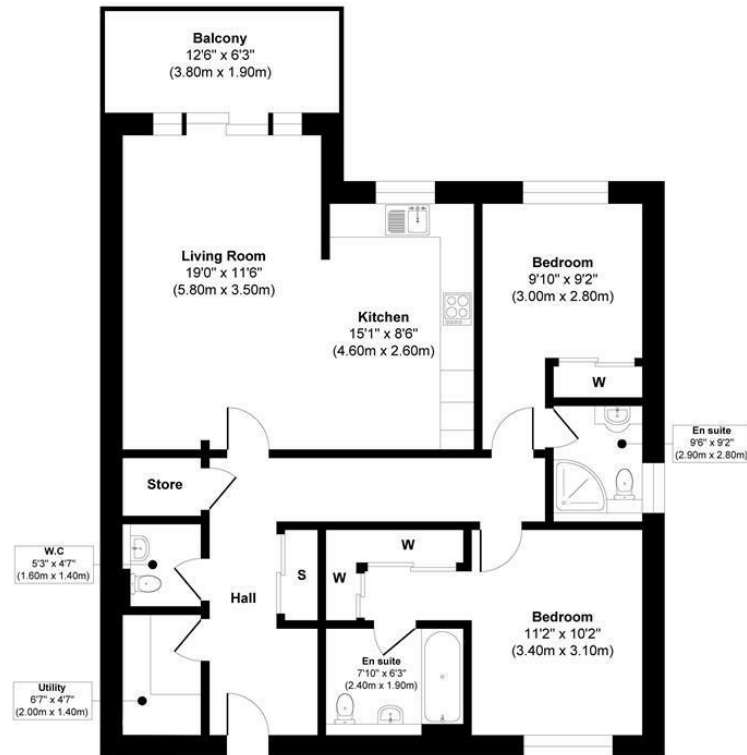
All viewings are strictly by appointment by calling Morgans on 01577 863424.

MORGANS PROPERTY PACKAGE

We provide the complete buying and selling package including a comprehensive estate agency service and full legal service. For a FREE PRE-SALE VALUATION, estimate and market appraisal without cost or obligation, please contact us.







Approximate Floor Area
998 sq. ft
(92.75 sq. m)



Approx. Gross Internal Floor Area 998 sq. ft / 92.75 sq. m

This floor plan is for illustrative and marketing purposes only and is to be used as a guide only. No details are guaranteed on measurements, floor areas, or orientation and do not form any agreement. No liability is taken for error, omission or misstatement. A party must rely upon its own inspection(s). Created by 9AM Media



SOLICITORS | PROPERTY

62 High Street, Kinross, KY13 8AN

Tel: 01577 863424

www.morganlaw.co.uk



espc

rightmove

Zoopa.co.uk

onTheMarket.com

s1homes.com

naei | propertymark
PROTECTED

AGENTS NOTE These particulars do not form part of any contract and the statements or plans contained herein are not warranted nor to scale. Approximate measurements have been taken by electronic device at the widest point. Services and appliances have not been tested for efficiency or safety and no warranty is given as to their compliance with any Regulations. No movable items will be included in the sale.