

Morgans

PROPERTY

8 School Wynd, Kinross, KY13 8EJ

Fixed Price £294,500







Nestled in the heart of Kinross, 8 School Wynd presents a unique opportunity to own a charming semi-detached house that is rich in history. This Category C Listed property, once a basket factory, boasts a delightful blend of traditional character and modern living. The residence features three well-proportioned bedrooms, providing ample space for family living or guest accommodation. One of the bedrooms is located on the ground level and could easily be utilised as a second reception room. The inviting living room serves as a perfect gathering space, while the spacious dining kitchen offers a warm and welcoming area for family meals and entertaining. With two shower rooms, convenience is assured for both residents and visitors alike. One of the standout features of this home is its electric gated access to the rear courtyard, providing both security and privacy. The location is ideal, situated in the town centre, allowing for easy access to local amenities, shops, and transport links. This property is not just a home; it is a piece of Kinross's history, offering a unique living experience in a vibrant community.





EXTRAS INCLUDED IN THE SALE

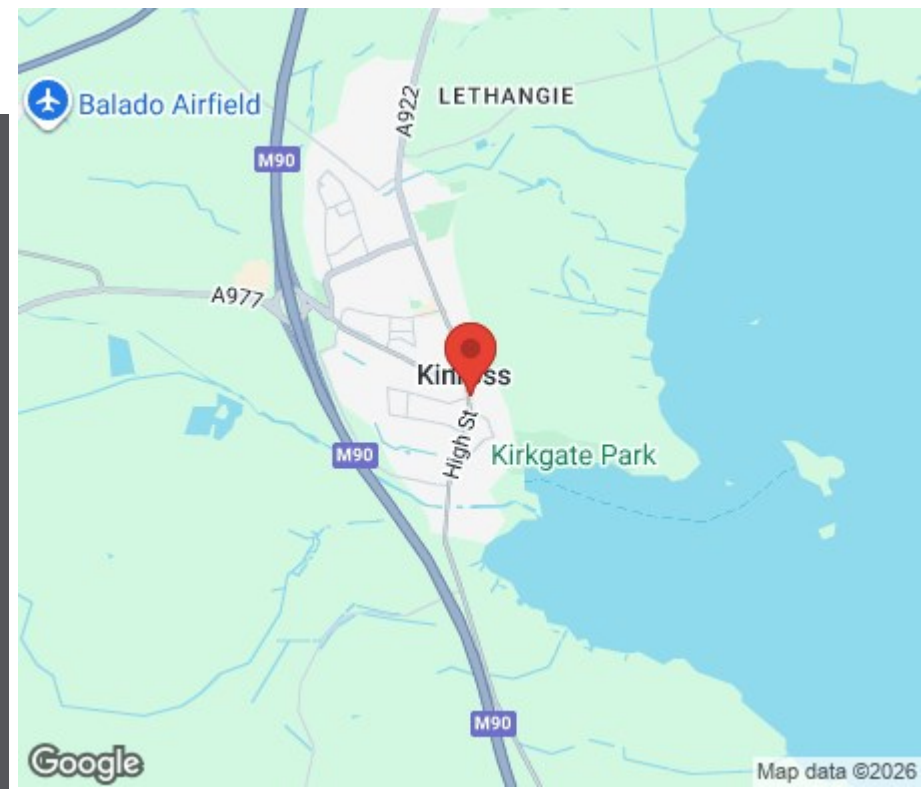
All fitted floor coverings, light fittings and integrated appliances will be included in the sale.

VIEWINGS

All viewings are strictly by appointment by calling Morgans on 01577 863424.

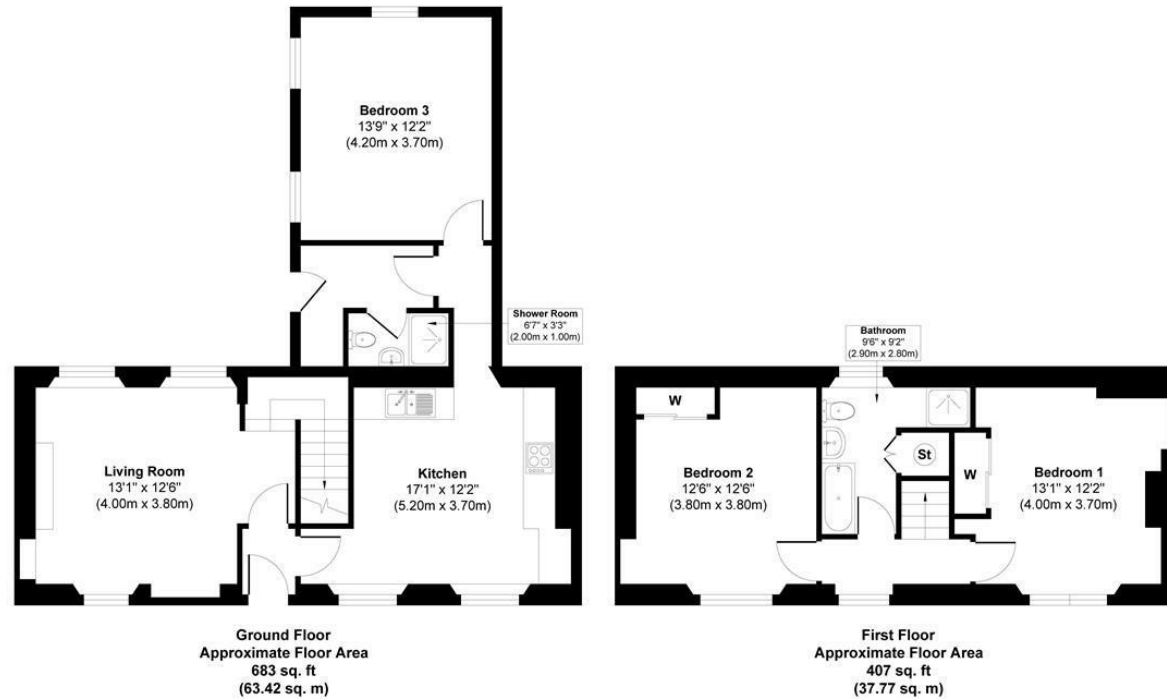
MORGANS PROPERTY PACKAGE

We provide the complete buying and selling package including a comprehensive estate agency service and full legal service. For a FREE PRE-SALE VALUATION, estimate and market appraisal without cost or obligation, please contact us.





School Wynd, Kinross, KY13 8EJ



Morgans

PROPERTY

Approx. Gross Internal Floor Area 1090 sq. ft / 101.19 sq. m

Illustration for identification purposes only, measurements approximate, not to scale. Copyright

Morgans

PROPERTY

SOLICITORS | PROPERTY

62 High Street, Kinross, KY13 8AN

Tel: 01577 863424

www.morganlaw.co.uk



espc

s1homes.com

rightmove

Zoopa.co.uk

onTheMarket.com

naei | propertymark

PROTECTED

AGENTS NOTE These particulars do not form part of any contract and the statements or plans contained herein are not warranted nor to scale. Approximate measurements have been taken by electronic device at the widest point. Services and appliances have not been tested for efficiency or safety and no warranty is given as to their compliance with any Regulations. No movable items will be included in the sale.