

Morgans

PROPERTY

Herne Lodge Rockcliffe, Dollar, FK14 7JY

Offers Over £195,000







This stunning Prestige 'Casa Du Lusa' Lodge is situated within the residential enclave Rockcliffe, Glendevon country Park. The lodge enjoys an elevated position with views over Glen Sherup. As you enter the bright open plan living/dining/kitchen area which features a Howden Kitchen with integrated appliances - dishwasher, wine cooler, five ring dual fuel stove and American style fridge freezer. The living area benefits from light from cathedral style windows which lead on to a deck area for al-fresco dining with tremendous views across the countryside to the Glen Sherup area and the river Devon. The separate utility cupboard houses the washer dryer and has an abundance of storage space. There are 2 bedrooms with the master bedroom benefitting from an en-suite shower room with a rainwater can shower head and a walk-in wardrobe fitted with shelving and hanging rail providing ample room for storage. The main bathroom has a tiled feature wall behind the bath with an overhead can shower. Externally, the low maintenance garden is mainly laid to lawn with a gravel garden area and raised flower bed bordered by two car parking spaces. This property is not just a home; it is a lifestyle choice, offering the perfect blend of modern living and natural beauty. Whether you are looking for a permanent residence or a holiday retreat, this Lodge in Rockcliffe, Glendevon, is a rare find that promises to enchant and inspire. Don't miss the chance to make this idyllic setting your own.





VIEWINGS

All viewings are strictly by appointment by calling Morgans on 01577 863424.

EXTRAS INCLUDED IN THE SALE

Fitted floor coverings, light fittings and integrated appliances will be included in the sale.

MORGANS PROPERTY PACKAGE

We provide the complete buying and selling package including a comprehensive estate agency service and full legal service. For a FREE PRE-SALE VALUATION, estimate and market appraisal without cost or obligation, please contact us.



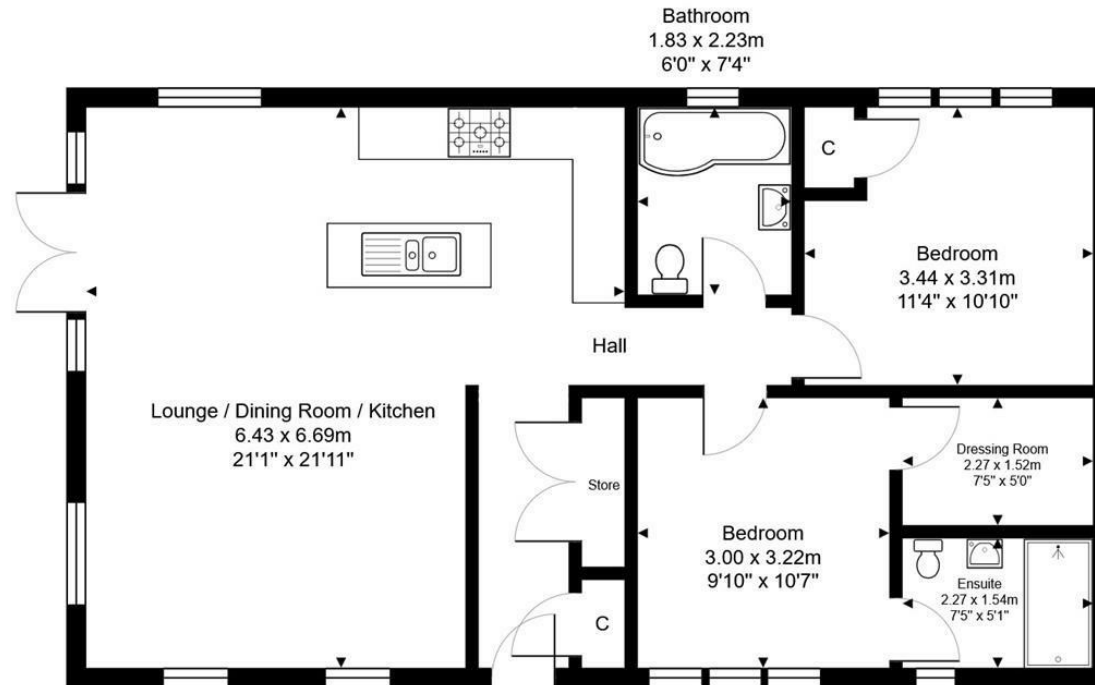


Herne Lodge, Glendevon, Dollar



Total Area: 80.4 m² ... 866 ft²

All measurements are approximate and for display purposes only



Ground Floor

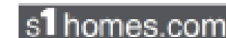


SOLICITORS | PROPERTY

62 High Street, Kinross, KY13 8AN

Tel: 01577 863424

www.morganlaw.co.uk



AGENTS NOTE These particulars do not form part of any contract and the statements or plans contained herein are not warranted nor to scale. Approximate measurements have been taken by electronic device at the widest point. Services and appliances have not been tested for efficiency or safety and no warranty is given as to their compliance with any Regulations. No movable items will be included in the sale.