

Loch Glow Main Street, Kinnesswood, KY13 9HN  
Offers Over £480,000







Loch Glow is an impressive stone built home ideally located in the picturesque village of Kinnesswood, boasting magnificent uninterrupted views over Loch Leven and the surrounding countryside. This beautiful home is extremely well presented with generous garden grounds providing an ideal outdoor entertaining space. A porch from the front gives access to the flexible ground level accommodation comprising three reception rooms, a large dining kitchen, utility, w.c and ground floor bedroom with en-suite shower room. The upper level provides a further 4 double bedrooms, two of which have en suite shower rooms, and a modern family bathroom. The dining kitchen is a spacious room with contemporary style kitchen at both base and wall levels, ample space for a dining table and chairs and separate seating area with recently fitted eco heating and hot water (solar thermal and pellet) system. This room leads to a stunning family room with wood burning stove and bifold doors leading to a decked seating area, taking full advantage of the spectacular views on offer.





### OUTSIDE SPACE

This property is ideally located on a picturesque spot nestled between the Bishop Hill and Loch Leven. A driveway at the front provides parking for 2/3 cars. There is a generous south/west facing garden to the rear with various seating areas, including decking which forms an extension to the family room, good sized lawn, pond and gated access to a private lawn with green house and shed perfect for an allotment if desired.

### EXTRAS INCLUDED IN THE SALE

All fitted floor coverings, light fittings and integrated appliances are included in the sale.

### VIEWINGS

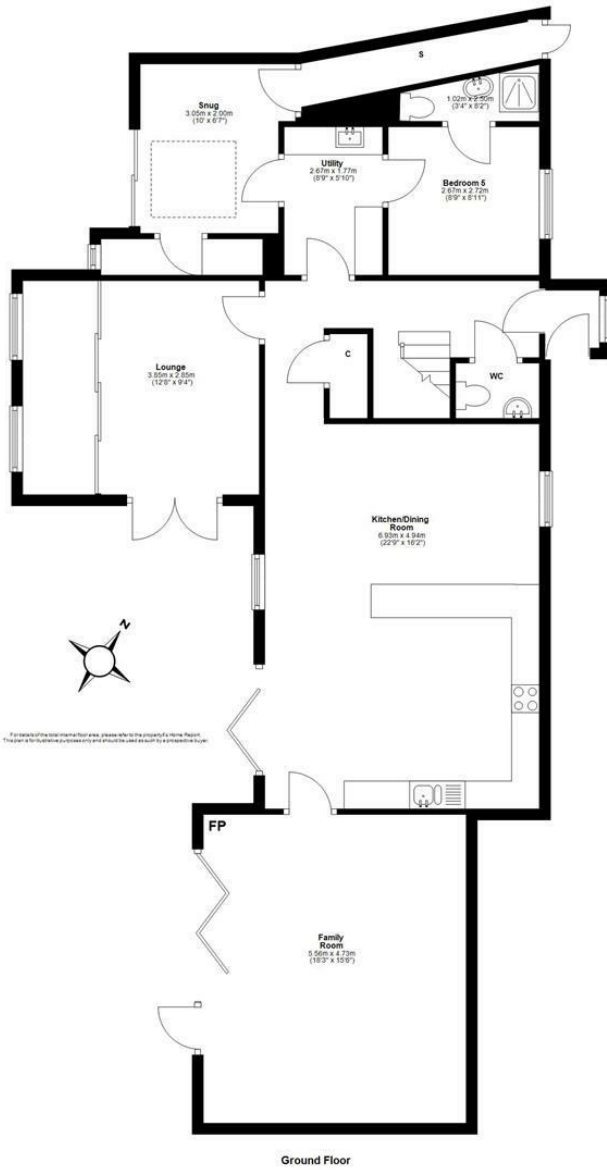
All viewings are by appointment through Morgans.



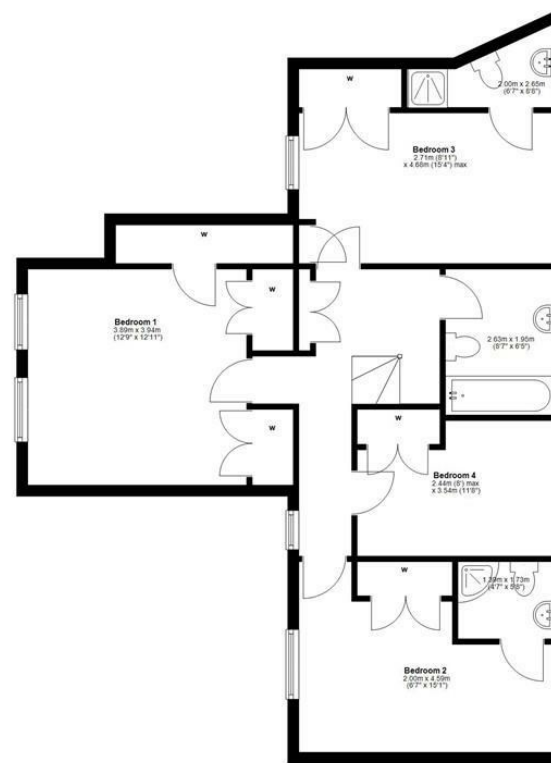








Ground Floor



First Floor



SOLICITORS | PROPERTY

62 High Street, Kinross, KY13 8AN

Tel: 01577 863424

[www.morganlaw.co.uk](http://www.morganlaw.co.uk)



eSpC

rightmove

Zopla.co.uk

onTheMarket.com

s1homes.com

naei | propertymark

PROTECTED

AGENTS NOTE These particulars do not form part of any contract and the statements or plans contained herein are not warranted nor to scale. Approximate measurements have been taken by electronic device at the widest point. Services and appliances have not been tested for efficiency or safety and no warranty is given as to their compliance with any Regulations. No movable items will be included in the sale.