

30 South Street, Milnathort, KY13 9XA
Offers Over £265,000







30 South Street is an immaculately presented end terrace property with high quality finishes throughout and is ideally located in the heart of the picturesque village of Milnathort close to all amenities. Access is given to the side of this property into a brightly presented hallway. The hallway has doors giving access to the lounge, dining kitchen, downstairs shower room and has a staircase leading to the upper level. The lounge is a lovely bright spacious room with 2 large windows to the front and one to the side allowing plenty of natural light to flood the room, finished with high quality engineered oak flooring with underfloor heating. The dining kitchen has a range of wall and floor units offering an abundance of storage with built in fridge freezer, dishwasher, hob, extractor and a state of the art dual fuel range cooker. This room has plenty space for dining and has a rear door leading to the garden. The ground floor shower room also benefits from having underfloor heating with large corner shower, w.c., sink and towel rail. On the upper floor are three well presented good sized double bedrooms and a modern family bathroom with a white suite incorporating a w.c., wash hand basin and bath with electric shower over. Externally the property has a shared driveway to the side of the property with private parking spaces to the rear along with a garden shed. The enclosed garden is a great suntrap with lawn and mature shrubs. Viewing is highly recommended.





VIEWINGS

Viewings are strictly by appointment through Morgans.

EXTRAS INCLUDED IN THE SALE

All fitted floor coverings, light fittings and integrated appliances will be included in the sale.

NOTES

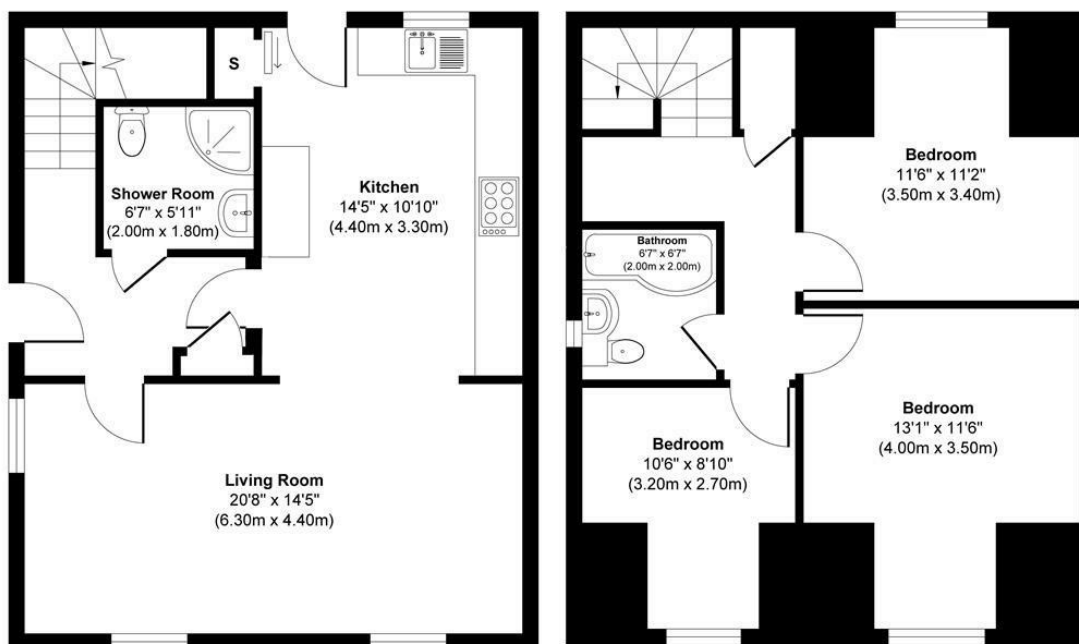
This property benefits from having under floor heating downstairs, a modern central vacuum system and a CCTV system.

MORGANS PROPERTY PACKAGE

We provide the complete buying and selling package including a comprehensive estate agency service and full legal service. For a FREE PRE-SALE VALUATION, estimate and market appraisal without cost or obligation, please contact us.







Ground Floor

First Floor



This floor plan is for illustrative and marketing purposes only and is to be used as a guide only. No details are guaranteed on measurements, floor areas, or orientation and do not form any agreement. No liability is taken for error, omission or misstatement. A party must rely upon its own inspection(s). Created by 9AM Media



SOLICITORS | PROPERTY

62 High Street, Kinross, KY13 8AN

Tel: 01577 863424

www.morganlaw.co.uk



AGENTS NOTE These particulars do not form part of any contract and the statements or plans contained herein are not warranted nor to scale. Approximate measurements have been taken by electronic device at the widest point. Services and appliances have not been tested for efficiency or safety and no warranty is given as to their compliance with any Regulations. No movable items will be included in the sale.