



50A Acremoar Drive, Kinross, KY13 8RE
Offers Over £325,000







*** £15,000 below Home Report Value ***

50a Acremoar Drive is a well presented detached villa built by Springfield Homes ideally situated in a popular residential location close to the local Community Campus and Health Centre. Brought to the market in move in condition this property is accessed from a monoblock driveway at the front into a brightly presented entrance hallway. The hallway has a staircase leading to the upper level and doors giving access to the lounge and integrated garage. The lounge is a good sized room with window to the front, useful under stair storage cupboard and open plan access to the dining kitchen. The contemporary styled dining kitchen acts as an ideal hub of the home with ample units at base and wall levels, integrated appliances, door leading to the utility and w.c and window overlooking the rear garden. The dining room leads on to a family/sun room. This room is currently used as a separate dining room but could easily be utilised as a family room with space for a dining table and chair in the kitchen. The upper level boasts four good sized bedrooms with the master bedroom having an en-suite shower room, and a family bathroom. Externally this property has gardens to both front and rear. The rear garden is fully enclosed with patio seating area and good sized lawn. Viewing is highly recommended to fully appreciate all this property has to offer.





EXTRAS INCLUDED IN THE SALE

All fitted floor coverings, curtains, blinds, light fittings, integrated appliances and garden shed/sauna will be included in the sale.

VIEWINGS

Viewings are strictly by appointment by calling Morgans.

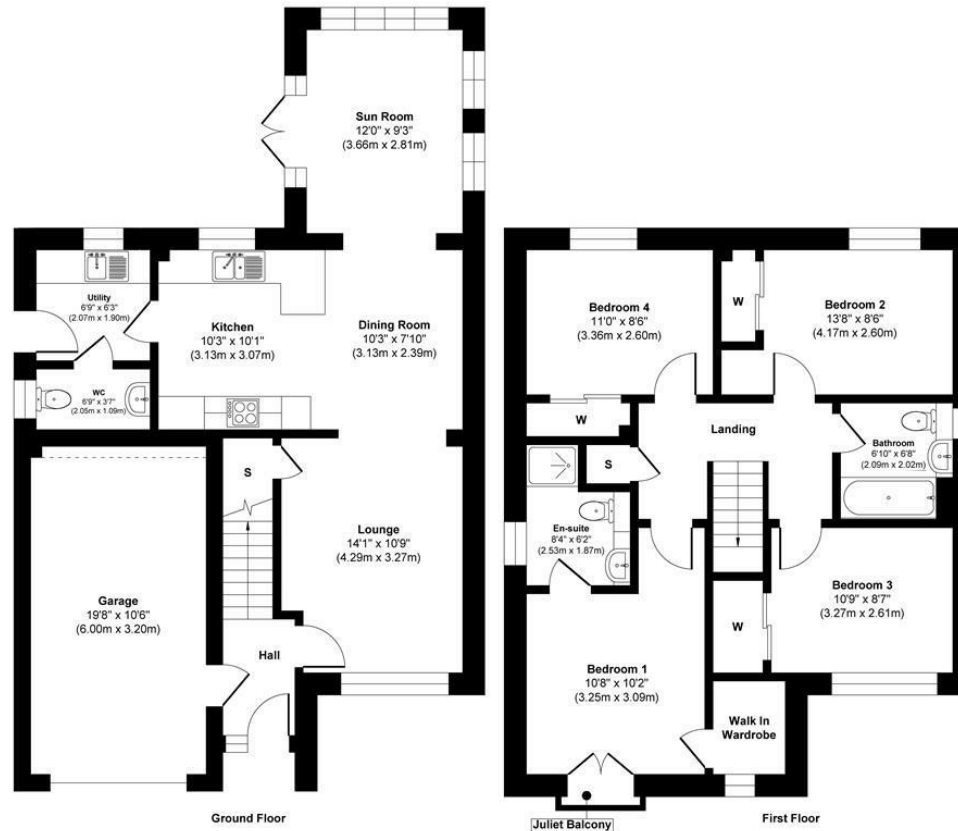
MORGANS PROPERTY PACKAGE

We provide the complete buying and selling package including a comprehensive estate agency service and full legal service. We are also Mortgage and Financial Advisers. For a FREE PRE-SALE VALUATION, estimate and market appraisal without cost or obligation, contact us.









This floor plan is for illustrative and marketing purposes only and is to be used as a guide only. No details are guaranteed on measurements, floor areas, or orientation and do not form any agreement. No liability is taken for error, omission or misstatement. A party must rely upon its own inspection(s). Created by 9AM Media



SOLICITORS | PROPERTY

62 High Street, Kinross, KY13 8AN

Tel: 01577 863424

www.morganlaw.co.uk



rightmove

Zopla.co.uk

onTheMarket.com



AGENTS NOTE These particulars do not form part of any contract and the statements or plans contained herein are not warranted nor to scale. Approximate measurements have been taken by electronic device at the widest point. Services and appliances have not been tested for efficiency or safety and no warranty is given as to their compliance with any Regulations. No movable items will be included in the sale.