

Ridgemere

D E L A M E R E





Pure privacy, wonderful woodland views and a home that inspires so much happiness that it is impossible to leave: welcome to Ridgemere.

Woodland Oasis

Skirting the edge of Delamere Forest, with views over both the woodland and golf course, Ridgemere has remained in the same family for 43 years. Built in 1957 for the founders of Harringtons Caravans, Ridgemere is a handsome home, tucked away behind a bespoke, wrought iron, double-gated entrance, with intercom/keypad access.

Edged in neatly clipped hedging and manicured lawn, the curving, horseshoe driveway offers ample parking for six cars, alongside a detached double garage.

Pretty planted borders precede the neatly paved front terrace, beyond which a large, quarry tiled porch provides shelter from the elements. Setting the scene for the homely comfort within, oak and stained-glass double doors open invitingly inward to the entrance hall.

“You wake up every day, whether it’s snowy or sunny, and the views are amazing – it’s so private.”





Warmest of Welcomes

Italian porcelain tiles warmed by underfloor heating create a classically elegant first impression that is reinforced by the tasteful décor. Broad and bright, the warm welcome of Ridgemere is instantly palpable.

Enjoy a glimpse of the handsome staircase ahead, before peeping through to the study on the right. Carpeted and cosy, dressed in soft lavender tones with a soft charcoal wallpaper feature, work from home in privacy, nestled away from the main flow of the home.

Next door, the handy WC is tiled underfoot, with vanity unit wash basin and WC.





Double doors open on the left of the entrance hall, opening to the enormous living room, where large windows look out to the far-reaching woodland views. Ornate, handmade plaster cornices add elegance to the room, as warmth emanates from the LPG gas fire. Pure Wool carpets underfoot were dyed to the owner's colour of choice at the same time the kitchen was completed in 2017. A room for all seasons, in the summer months, open the French doors and soak up the sunshine on the patio.



French doors also connect the living room to the Conservatory, a spacious and serene room where a wealth of windows brings the outdoors in. Step out onto the patio to admire the garden and breathe in the fresh Delamere air.

“This home comes alive when family visit, we always have a 10ft Christmas tree.”

Wine and Dine

A unique wrought iron gated entrance ensures the dining room, accessed off the living room, retains a sense of privacy and separation, whilst being open to the main living space. The ultimate home in which to entertain, wine and dine to a soundtrack of your choosing, courtesy of the Bose fitted speaker system. An ornate ceiling rose and detailed coving dress the ceiling, while French doors open to the garden terrace, making alfresco dining easy in the summer months.

Returning to the entrance hallway, turn left and emerge into the kitchen. A vast room, the bespoke Henry Lewis oak kitchen is painted in Farrow & Ball 'Plummett', complemented by cupboards dressed in 'Blackened' for a dramatic, yet soft and friendly feel. Azul Eyes granite worktops sparkle a brilliant blue in the sunlight, painstakingly sourced from a quarry in Italy for its dazzling finish.





Create the perfect mood with the Lutron multi-choice lighting system as you cook up a feast for family and friends on the large, stainless steel Falcon double oven with five-ring induction hob, one large wok-burner and two side burners.

There is also a built-in microwave and large warming drawer alongside a top of the range Westinghouse double extractor, large, Siemens wine cooler (housing up to 60 bottles of wine or champagne), full height Siemens fridge, Bosch dishwasher, Quooker instant hot water tap and double sink. Abundant storage can be found in the built-in larder unit, whilst the large central island is a sociable space ideal for convivial chatter over a glass of wine.

“We especially love our glass display cabinet; we have collected pieces of glass from all our overseas trips with special pieces from Murano Italy.”



Family Friendly

The perfect space in which to relax and unwind, the kitchen extends into the Orangery, a relaxing room all year round, warmed by the sunshine in the summertime and underfloor heating in the depths of winter. Double doors provide access out to the patio, where stone steps lead out into the glorious 0.9 acre of gardens.

A home with fantastic, family friendly flow, the kitchen also opens up into a cosy snug, with bay window to the front and a gas fire encased in a handsome stone surround. Underfloor heating warms the porcelain tiles once more.

Practical places accompany the sociable spaces, with a utility room also nestled off the kitchen, with space for an American-style fridge-freezer, ample cupboard storage, an undermounted sink and plumbing for a washing machine and dryer.





Ridgemere DELAMERE

Sweet Dreams

Returning to the entrance hall, take the stairs to the first-floor landing, turning left into a blissfully bright double bedroom, where cream carpet extends underfoot and accents of duck egg blue create a calming atmosphere. Wake up to far reaching views out towards Delamere Forest.

Storage is plentiful, with a dressing room furnished with mirrored, fitted wardrobes alongside a refreshing ensuite, tiled, and furnished with shower, wash basin, heated towel radiator and WC.





Refresh and Revive

Relaxation awaits in the family bathroom opposite, where gleaming marbled tiles in grey and white reflect the light. A spacious room, with large bath, separate shower, fitted storage, wash basin, heated towel radiator and WC. Set the mood lighting, draw a bath, pour a glass of wine and enjoy some well-deserved peace after a busy week.

Turning left out of the bathroom, dark blue tones add a regal feel to the second double bedroom, recently fitted with luxury Heritage Fitted Furniture of London wardrobes.

Coming out of this bedroom, turning right along the landing, bedroom three offers views out towards Delamere once more, dressed in a floral patterned feature wall.





Finally, seek sanctuary in the master bedroom, where a host of fitted wardrobes provide plenty of storage and a wide window opposite the double bed provides leaf fringed views out towards Delamere Forest. Recently modified by the current owners, an original beam is now exposed in the ceiling, adding a sense of spaciousness, character and warmth.

“Our bedroom is a calm oasis where you can retreat to.”

Refresh your senses in the ensuite, where white marbled tiling extends to the walls and underfoot, furnished with a large walk-in shower with alcove shelving, WC and heated towel radiator. An abundance of fitted storage is available in the cabinets and vanity units beneath the twin wash basins.



“At twilight hundreds of Canada Geese fly over to land in Delamere Forest – squadrons of them. We are right in their flight path – it’s a sight to behold.”



Garden Oasis

Outside, the private 0.9 acres of garden at Ridgemere is as sociable as the indoor space, having hosted marquees, birthday, engagement, prewedding and jubilee parties over the years.

Stone steps lead up from the patio (spanning the entire rear of the home and accessible from almost every room) to tiered, sandstone levels of lush green lawn and mature borders. Planted for all year colour, each season brings with it a new wave of texture, fragrance and hue.

A fountain adds a soothing water element to the garden – the perfect place to sit by in the sunshine – whilst mature planting includes specimen trees, beautiful acers, giant seccioia and a stunning liriodendron which turns the most delicate peach colour each November. High hedging assures your privacy in this peaceful garden paradise.

In the evening, the sun dips behind the trees at the top of the garden after six, with owls swooping silently overhead and signifying day’s transition into dusk.



Near and Far

A multitude of walks extend on your doorstep, with tracks and footpaths through Delamere Forest and the Sandstone Trail on your doorstep. For golf lovers Delamere Golf Course is just a mile away.

Close by in Little Budworth is the Cheshire Polo Club, with Oulton Park and its race track within easy reach. Chester, home to the Roodee, the oldest racecourse in England, its independent shops and famous historic Walls, is only 12 miles away. Why not board a boat and enjoy a cruise along the River Dee?

There are plenty of eateries nearby, from the Fortune Palace Chinese restaurant to The Carriers Inn. The ever popular Fishpool Inn is a five minute drive away or less than 2 miles to stroll to and the Fox and Barrel in Cotebrook is also close by.

Amenities are in plentiful supply with Tarporley Village on the doorstep. Delamere Stores is an easy 10 minute walk away and has all your day-to-day requirements, whilst The Hollies Farm Shop is within a short car ride, serving up a vast variety of fresh fruit, veg and flowers.

Secluded yet not isolated, Delamere station is just a short walk away where you can hop on a train into Chester or Northwich. Chester, Knutsford and Tarporley are all close by, whilst a host of excellent local state schools are within easy reach, alongside the independent Grange School, close by in Hartford.

The ultimate home in which to bring up a young family, Ridgemere is a spacious, secluded, serene and happy home, awaiting its next chapter.

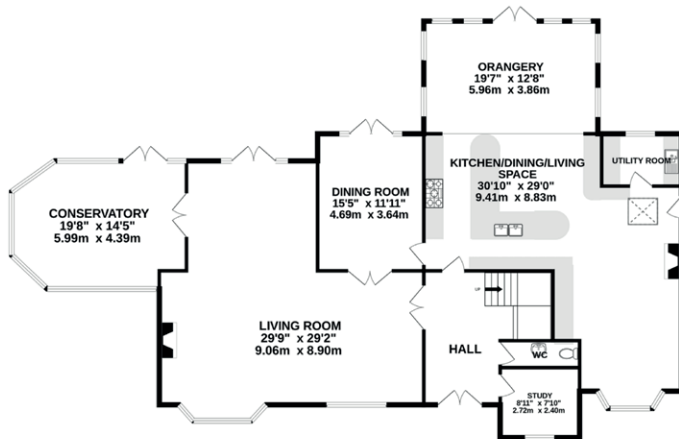
** Whilst every effort has been taken to ensure the accuracy of the fixtures and fittings mentioned throughout, items included in sale are to be discussed at the time of offering. **

“It is, and always has been, such a happy home.”

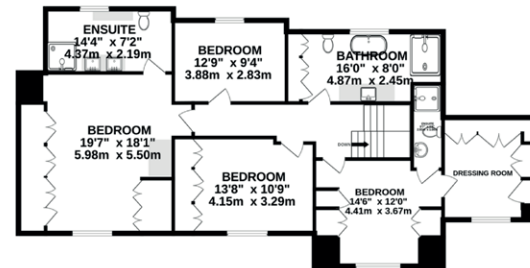




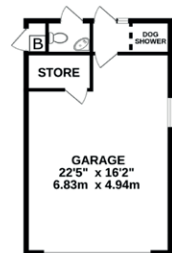
GROUND FLOOR
2233 sq.ft. (207.4 sq.m.) approx.



FIRST FLOOR
1274 sq.ft. (118.3 sq.m.) approx.



GARAGE
422 sq.ft. (39.2 sq.m.) approx.



TOTAL FLOOR AREA: 3929sq.ft. (365sq.m) approx.

(Excluding garages & outbuildings): **TOTAL FLOOR AREA: 3507sq.ft. (325.8sq.m) approx.**

Whilst every effort has been taken to ensure the accuracy of this floorplan, the room sizes, placement of doors or windows and any countertops or other items are approximate and therefore we take no responsibility for error or omission.

This floorplan is for illustrative purposes and should be used as such for any potential purchaser.

©Haywoods Property Consultancy 2023

Specifications

- 3507 square feet, plus garage and outbuildings
- 0.9 acres of garden
- 4 bedrooms, 3 bathrooms
- Secluded, yet not isolated, on the edge of Delamere Forest
- Excellent transport links

SEE IAN'S
VIDEO
TOUR



Unable to locate the property?

Try **what3words**



lentil.bagpipes.witless

Ridgemere

DELA MERE



Ridgemere
51 Station Road
Delamere
CW8 2HZ



01606 339922 | hello@storeysofcheshire.co.uk