



THE COTTAGE



WRENBURY



ICONIC APPEAL

Just half a mile from Wrenbury village centre, discover The Cottage amidst the exclusive handful of homes populating the peaceful country settlement of Pinsley Green.

A historic home, lovingly renovated, experience the tranquillity and calm of a bygone age within its iconic black and white brick and timber frame façade.

Grade II listed, The Cottage bridges both worlds, with fields extending to the front and rear of the home, yet conveniently accessible for commuting and amenities.

Arriving to a serenade of birdsong, pull through the new hardwood gated entrance where an oak and cedar carport await comprising two covered bays plus a garage.

With its black and white brick and timber frame, the oldest parts of The Cottage date back to the 17th century and the programme of extensive renovations that have been undertaken have taken care to retain all the original character of the home.



CHARACTER FEATURES PRESERVED

A historic home, whose true antiquity lay hidden in render for generations, its monochrome majesty was only revealed in the mid 1980s during extension works. Wax parchment dating back to the 1700s links the home to the illustrious Lord Combermere and notes that the front portion of the home was once two cottages, with the garden likely to have been ploughed for crops.

Many of the home's improvements are those unseen, behind the scenes comforts, otherwise only notable by their omission, such as a new sewage treatment plant and rainwater drainage. Window frames have been updated, repaired and replaced where needed, with listed building consent in place to replace all windows with double glazing in the older part of the property and to install French doors out into the garden.

“As you travel through the home you feel as if there should be red ropes – it’s older than many National Trust properties!”





WARMTH AND WELCOME

From beneath a portico shelter, make your way indoors and onto the antique oak wooden flooring of the entrance hall, a warm, welcoming and homely space with a roaring double width wood burner nestled into a redbrick inglenook with exposed beams above. More than simply a conduit between rooms, this characterful and capacious entrance hall serves as a destination in its own right and could work well as a study or snug.

Opening up on the left, make your way through into the lounge, a gloriously light-filled room, with exposed beams overhead. Warmth emanates from the Clearview log burner, nestled within its brick surround, with arched alcoves to one side of the fireplace. Windows on two sides provide fantastic views out onto the garden and fields beyond. Sense the history of the home, with the fire blazing at Christmas time, or whilst enjoying a glass of wine or two with friends after dinner.

Retracing your steps to the entrance hall, admire the exposed beams within the walls, making your way through to the dining room on the right.



WINE AND DINE

An atmospheric and intimate room, ideal for dinner parties, the beam bedecked walls breathe history, particularly when warmed by the morning sun, which streams in through the window. Likely to have once served as a meeting room for farmers and important villagers, it is believed that this portion of the home dates back to around 1650.

"The beauty of this home is the light."

Turning right out of the dining room, make your way into the snug, part of the 'modern' half of the home, yet still awash with character in its exposed beams and brickwork. Close to the kitchen, the snug serves well as a playroom, or even as an office. With views to the garden, this room is saturated in sunlight for a large part of the day.





BESPOKE KITCHEN

Refitted with a range of bespoke cabinetry, feast your eyes on the family kitchen, installed by Puddled Duck Kitchens of Cheshire, where modern meets classic in the contemporary Shaker-style kitchen, where dove grey cabinetry provides plenty of storage and sociable dining can be enjoyed on the central island breakfast bar.

Fitted appliances include separate floor to ceiling fridge and freezer, dishwasher, large, four oven Aga cooker that throws heat out to the room throughout winter, and a Neff oven and hob with microwave and second fridge in the central island. There is also extensive deep drawer storage, full height double door pantry cupboards plus two hidden pull-out recycling bins.

Flourished with modern touches, a full extractor sits snug to the ceiling above the central island, with a pop-up USB charger/plug sockets and different lighting options.

Double doors from the kitchen open to reveal an area with a worktop, alongside plumbing and space for a washing machine and dryer.



LIGHT-FILLED BEDROOMS

Returning to the entrance hall, take the carpeted stairs up to the large, full height beam laden landing, with impressive, exposed brick chimney, where four light-filled bedrooms can be found neatly situated in the four corners of the home, providing each with a double aspect of the surrounding garden and countryside.



Turning left, arrive at the first of the four bedrooms, carpeted in cream and dressed in neutral tones, overlooking the garden on two sides.

Coming across to the opposite side of the landing, arrive at a second spacious double bedroom, where exposed beams lend such character to the walls. Uniquely shaped, the quirky angles in the rooms create such personality throughout the home.





From the landing, step up to a raised section, where original beams are displayed once more. Access an inner landing, leading to the master bedroom.

Furnished with fitted wardrobes and a luxurious ensuite with wet room shower, wash basin and WC, this spacious master bedroom basks in blissful views over the countryside.

“It’s south facing, so you get the sunlight for most of the day. You can just sit there and enjoy the sunsets, with uninterrupted views of nothing but countryside.”



BATHROOM BLISS

Serving the remaining three bedrooms is the bathroom, refitted last year by Pebbles of Nantwich and furnished with Villeroy and Boch accessories. Enjoy a relaxing soak in the deep metal German bathtub, with overhead Hansgrohe rainfall shower and handheld attachment. There is also a vanity unit wash basin with LED lit drawers and demisting mirror, creating the ultimate mood lighting for your soak.

Bedroom four, along the inner landing, is a light and bright bedroom, with delightful views and ample space for twin beds, with large, fitted wardrobes.



OUTDOOR ENTERTAINING

Outside, the large, 0.4 acre, south-facing garden is securely tucked behind fencing and mature hedges on all sides.

Relandscaped by the current owners, the garden has been replanted with new shrubs, with older established trees, including a few specimens, allowed to breathe more freely.

Mature borders offer colourful shrubbery and planting including a show of summer dahlias, with a further sprinkling of fruit trees, including two apple trees and a plum tree.

Soak up the sunshine on the patio and entertain family and friends with summer barbecues.





“The garden is a blessing – it’s another room. As soon as the weather warms up – that’s it – you’re in the garden from after tea ‘til it goes dark.”

OUT AND ABOUT

Take a stroll into the classic village green centre of Wrenbury, less than a mile on flat ground. Wrenbury was named as one of the 50 best villages in the UK by The Sunday Times in 2021.

A traditional village, home to a Post Office, doctors' surgery and busy village store, you can also call in for a refresher at the local pub right next to the Llangollen canal. Perfect for those with dogs, enjoy a walk along the canal tow path, coming off at Marbury where you can reward your endeavours at local pub The Swan.

Only ten minutes from nearby Nantwich, a vibrant and bustling town, call in for a coffee and cake, or take in some of the cultural highlights which have recently included food and jazz festivals.

Commuting is convenient, with a local railway station in Wrenbury alongside further connections at nearby Crewe, Chester, Liverpool and Manchester are also easily accessible by road links.

Families are well placed, with a range of schools close by including a village primary school and nearby Bishop Heber, Brine Leas and Malbank Secondary schools.

A versatile home on a spacious plot, The Cottage is a well-hidden, private home, blending the comforts of contemporary living with the warmth and welcome of a traditional period home.

Countryside living with convenience, a character home with contemporary benefits, enjoy the space and tranquillity of The Cottage, a historic home with an enduring charisma.

ASK THE OWNERS

Where do you go when you need...



Groceries?

Wrenbury Village Store and Post Office



A walk?

Canal walk in Wrenbury



A bite to eat?

Dusty Miller



A day out with the family?

Children's park in Wrenbury



School?

Wrenbury Primary School



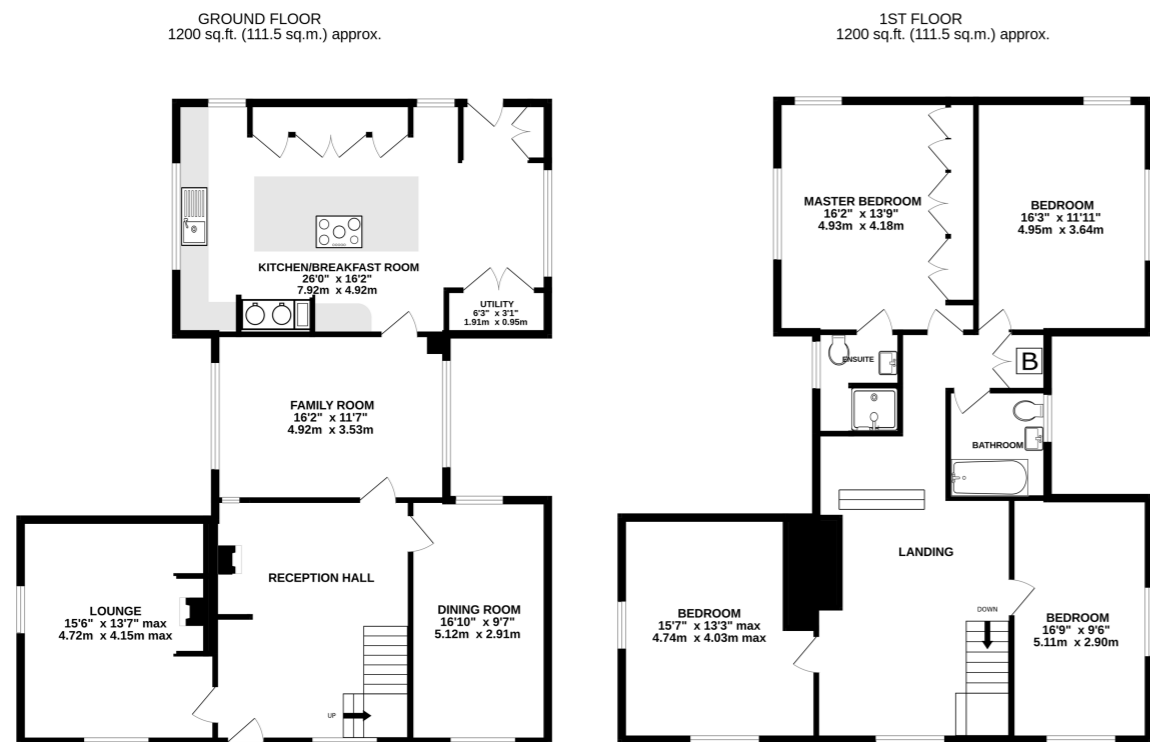
A local pub?

The Bhurtpore Inn
(locals call it 'The Bhurty')



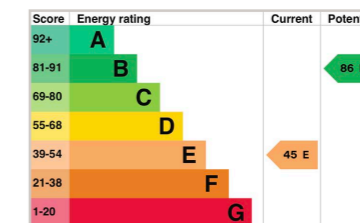
SPECIFICATIONS

- A historic and charming home, dating back to the 17th century
- Grade II listed
- Carefully retained character throughout the home
- 2400 square feet of living space
- 4 bedrooms, 2 bathrooms
- 0.4 acre south-facing garden
- Just half a mile from Wrenbury Village centre
- Plenty of nearby amenities and excellent transport links



TOTAL FLOOR AREA: 2400 sq.ft. (223.0 sq.m.) approx.

Whilst every effort has been taken to ensure the accuracy of this floorplan; the room sizes, placement of doors or windows and any countertops or other items are approximate and therefore we take no responsibility for error or omission. This floorplan is for illustrative purposes and should be used as such for any potential purchaser.



Unable to locate the property?

Try [what3words](#)

wardrobe.charities.clear

** The information Storeys of Cheshire has provided is for general informational purposes only and does not form part of any offer or contract. The agent has not tested any equipment or services and cannot verify their working order or suitability. Buyers should consult their solicitor or surveyor for verification. Photographs shown are for illustration purposes only and may not reflect the items included in the property sale. Please note that lifestyle descriptions are provided as a general indication. Regarding planning and building consents, buyers should conduct their own enquiries with the relevant authorities. All measurements are approximate. Properties are offered subject to contract, and neither Storeys of Cheshire nor its employees or associated partners have the authority to provide any representations or warranties. **

THE COTTAGE



Pinsley Green
Wrenbury
CW5 8HE



01829 700359 | hello@storeysofcheshire.co.uk