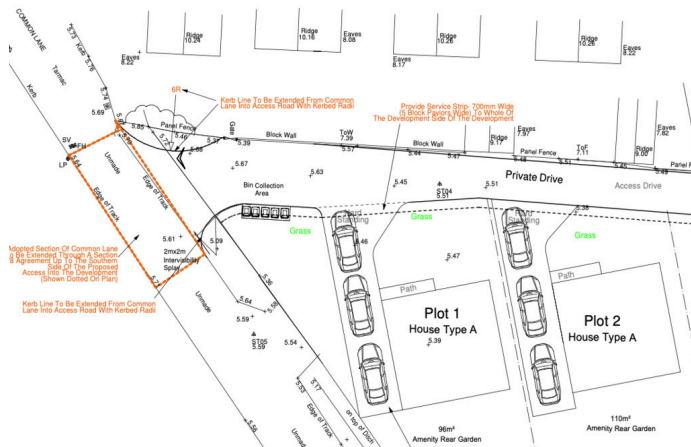






SUPERB NEW BUILD DEVELOPMENT WITH BEAUTIFUL SPECIFICATION AND ORCHARD VIEWS IN THE FABULOUS VILLAGE OF NORTON. These delightful dream homes offer a distinctive design that will impress all purchasers. Positioned on Common Lane, this selection of fantastic dormer bungalows are sure to attract plenty of attention and an early reservation is highly recommended. Plot one briefly comprises of entrance hallway, WC, living room, open plan kitchen/diner, ground floor bedroom with en-suite shower, stairs to the first floor landing, two further first floor bedrooms both with en-suite facilities of beautiful quality, fabulous garden with orchard views and off street parking for three cars on the driveway. SIMPLY STUNNING NEW BUILD HOME.



ENTRANCE HALL

WC

LIVING ROOM

KITCHEN/DINER

GROUND FLOOR BEDROOM

EN-SUITE SHOWER ROOM

STAIRS

LANDING

BEDROOM

EN-SUITE BATHROOM

BEDROOM

EN-SUITE SHOWER ROOM

GARDENS

DRIVEWAY



HIGHLIGHTED FEATURES

SPOTLIGHTS THROUGHOUT

DELIGHTFUL ISLAND STYLE KITCHEN

FULLY TILED BATHROOMS

FREESTANDING BATH

UNDER FLOOR HEATING SYSTEM WITH SMART

WIFI THERMOSTATS

DORMER WINDOWS WITH FIELD VIEWS

TURFED REAR GARDEN WITH ORCHARD VIEWS

PAVED DRIVEWAY

EXPECTED EPC RATING: A

EXPECTED COMPLETION DATE:

SEPTEMBER 2024

