

# 261 Rectory Road

**SUBMITTED BY**  
Ian  
ianhk@icloud.com

**CREATED ON**  
2024-05-17

**LOCATION**  
261 Rectory Road  
RM17 5SW Grays  
England  
United Kingdom



**Total area**  
943.70 sq ft

**Floors**  
2

**Rooms**  
11

**Bathroom**  
1

**Photos**  
2 Photos (see photos page)

# Kempsters

ESTATE AGENTS

## 261 Rectory Road

261 Rectory Road, RM17 5SW Grays, England, United Kingdom  
TOTAL AREA: 943.70 sq ft • LIVING AREA: 943.70 sq ft • FLOORS: 2 • ROOMS: 11

**Kempsters**  
ESTATE AGENTS

### ▼ Photos/261 Rectory Road



# Kempsters

ESTATE AGENTS

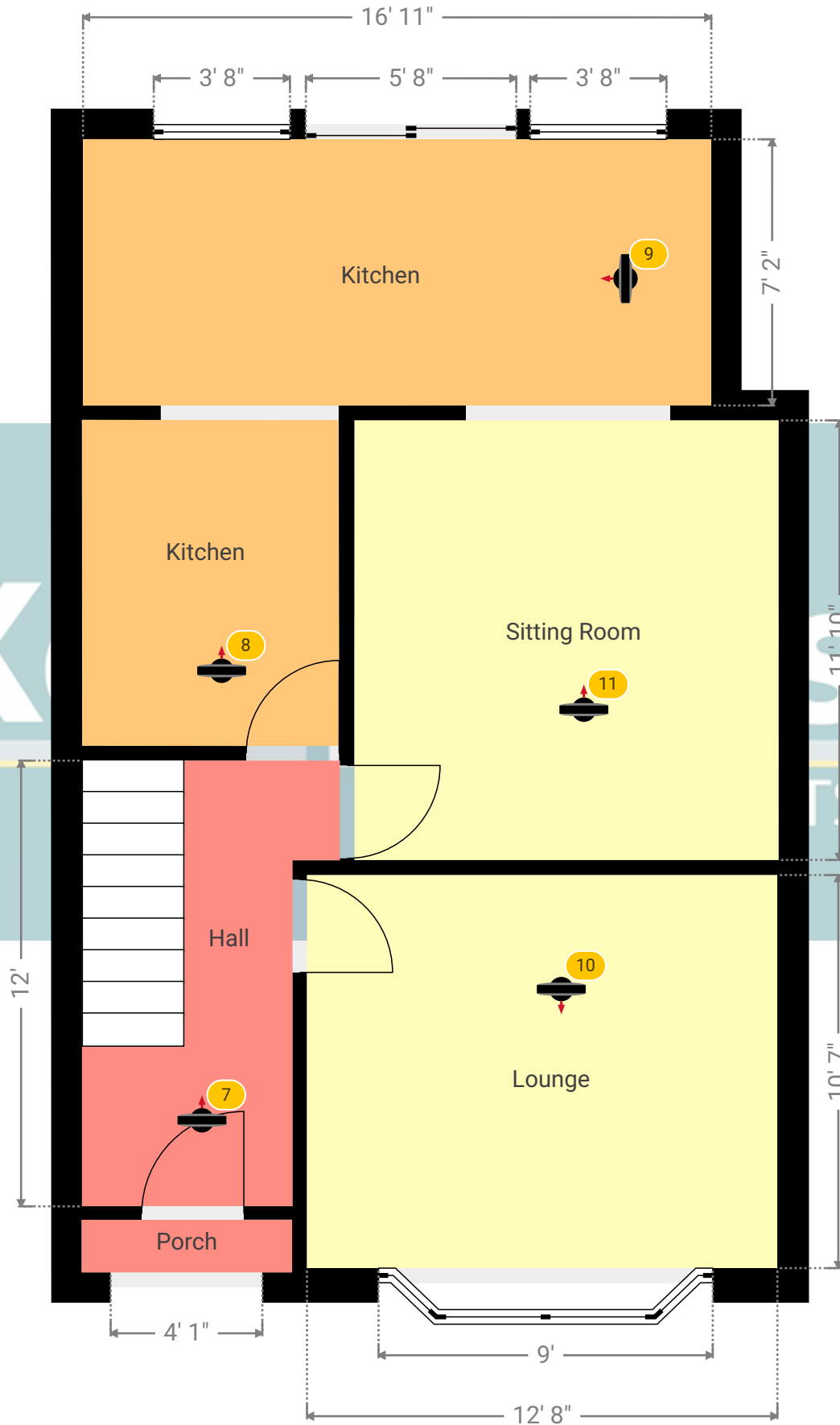
# 261 Rectory Road

261 Rectory Road, RM17 5SW Grays, England, United Kingdom  
TOTAL AREA: 943.70 sq ft • LIVING AREA: 943.70 sq ft • FLOORS: 2 • ROOMS: 11

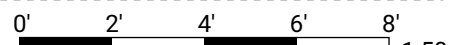


## ▼ Ground Floor

TOTAL AREA: 530.17 sq ft • LIVING AREA: 530.17 sq ft • ROOMS: 6



Kempsters Estate Agents take no responsibility for any error, omission, misstatement or use of data shown. This plan is for illustrative purposes only and whilst every attempt has been made to ensure the accuracy of the floorplan shown, all measurements, positioning, fixtures, fittings and any other data shown are an approximate interpretation for illustrative purposes only. These plans are the property of Kempsters Estate Agents Ltd and must not be reproduced in any form without our permission.



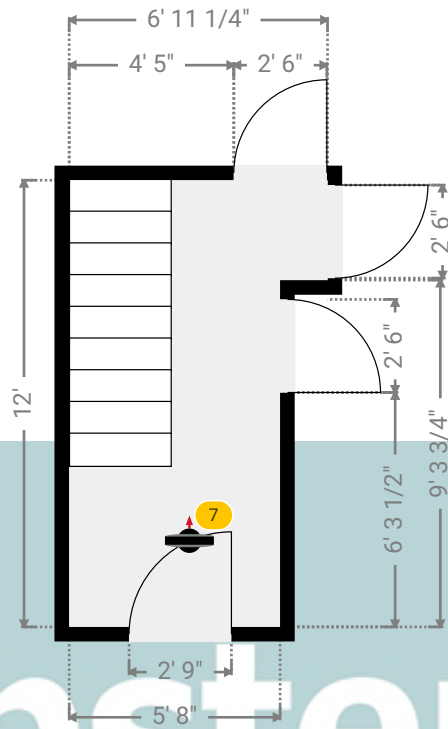
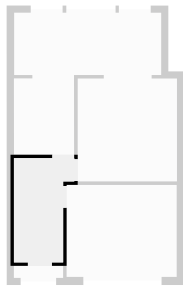
# 261 Rectory Road

261 Rectory Road, RM17 5SW Grays, England, United Kingdom  
TOTAL AREA: 943.70 sq ft • LIVING AREA: 943.70 sq ft • FLOORS: 2 • ROOMS: 11



## ▼ Hall Ground Floor

WIDTH: 6' 11 1/4" • LENGTH: 12'  
AREA: 71.42 sq ft • PERIMETER: 37' 10 1/2"



## ▼ Hall/Ground Floor

Photos  
2 Photos (see photos page)

### 7 360 PANORAMA

Photo  
1 Photo (see photos page)

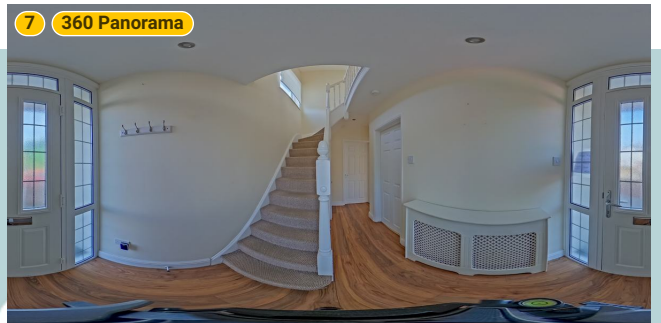
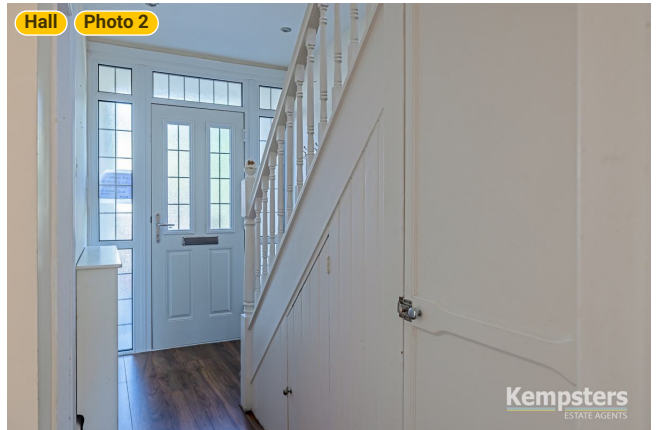
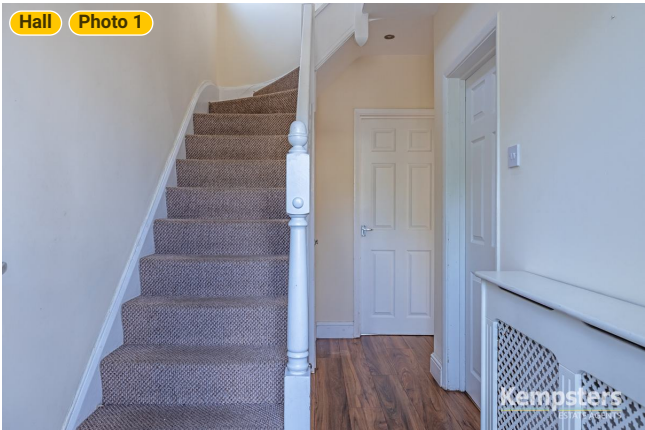


# 261 Rectory Road

261 Rectory Road, RM17 5SW Grays, England, United Kingdom  
TOTAL AREA: 943.70 sq ft • LIVING AREA: 943.70 sq ft • FLOORS: 2 • ROOMS: 11



## ▼ Photos/Hall



**Kempsters**  
ESTATE AGENTS

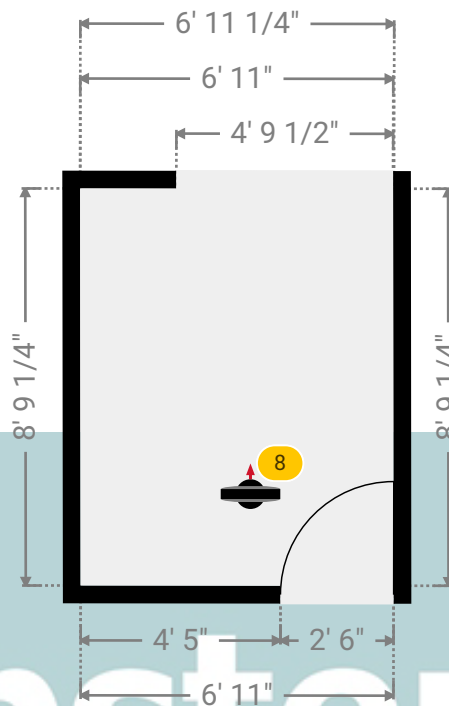
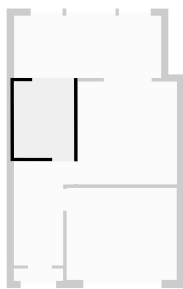
# 261 Rectory Road

261 Rectory Road, RM17 5SW Grays, England, United Kingdom  
TOTAL AREA: 943.70 sq ft • LIVING AREA: 943.70 sq ft • FLOORS: 2 • ROOMS: 11



## ▼ Kitchen Ground Floor

WIDTH: 6' 11 1/4" • LENGTH: 8' 9 1/4"  
AREA: 60.68 sq ft • PERIMETER: 31' 4 1/2"



# Kempsters

ESTATE AGENTS

## ▼ Kitchen/Ground Floor

Photos  
3 Photos (see photos page)

### 8 360 PANORAMA

Photo  
1 Photo (see photos page)



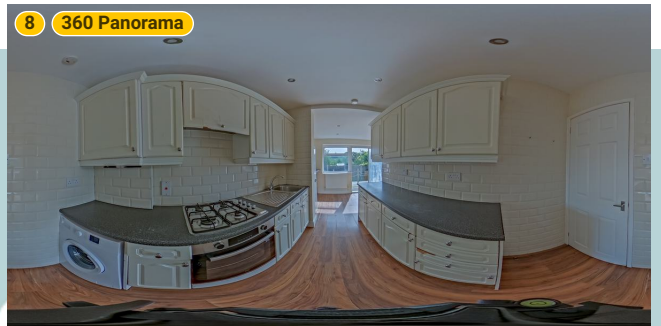
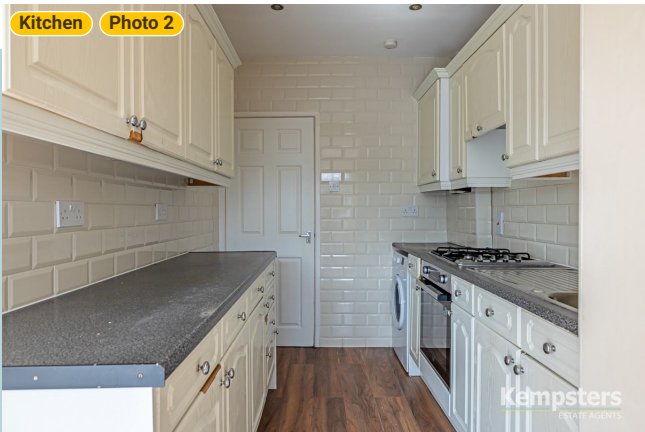
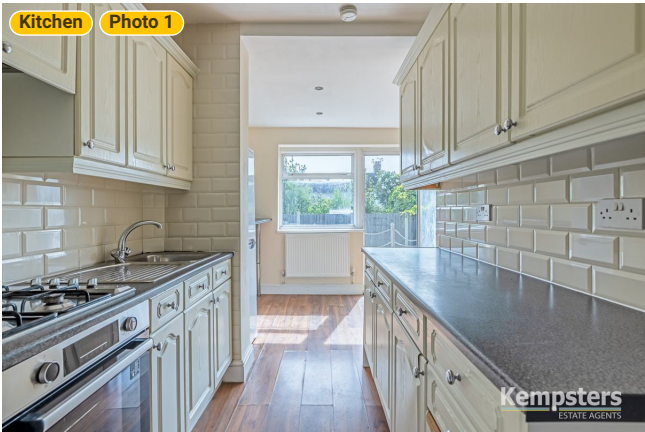


# 261 Rectory Road

261 Rectory Road, RM17 5SW Grays, England, United Kingdom  
TOTAL AREA: 943.70 sq ft • LIVING AREA: 943.70 sq ft • FLOORS: 2 • ROOMS: 11



## ▼ Photos/Kitchen



**KEMPSTERS**  
ESTATE AGENTS

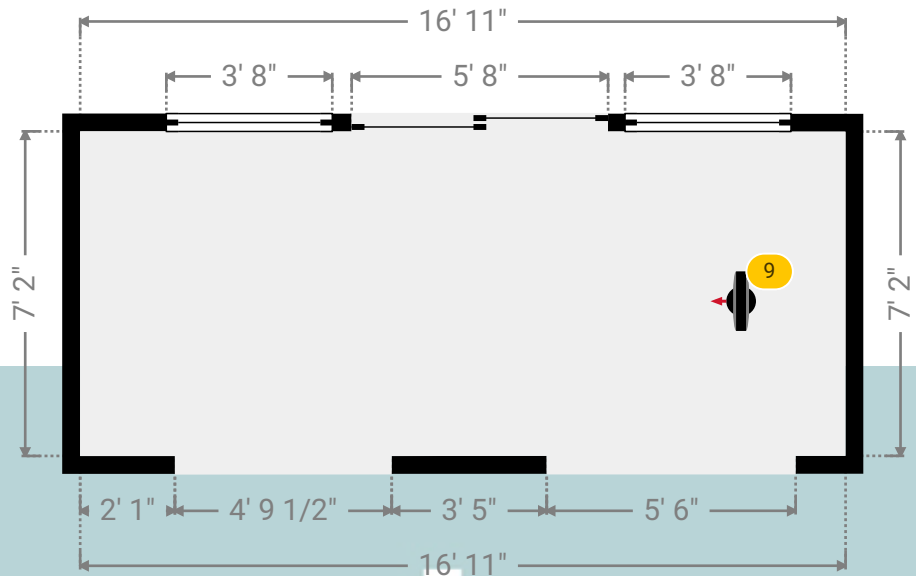
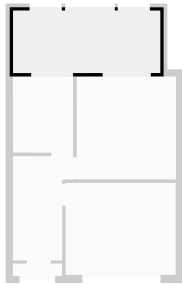
# 261 Rectory Road

261 Rectory Road, RM17 5SW Grays, England, United Kingdom  
TOTAL AREA: 943.70 sq ft • LIVING AREA: 943.70 sq ft • FLOORS: 2 • ROOMS: 11



## ▼ Kitchen Ground Floor

WIDTH: 16' 11" • LENGTH: 7' 2"  
AREA: 121.28 sq ft • PERIMETER: 48' 2"



## ▼ Kitchen/Ground Floor

Photos  
2 Photos (see photos page)

### 9 360 PANORAMA

Photo  
1 Photo (see photos page)



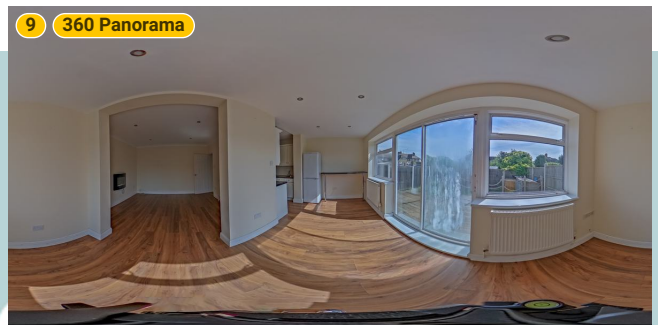


# 261 Rectory Road

261 Rectory Road, RM17 5SW Grays, England, United Kingdom  
TOTAL AREA: 943.70 sq ft • LIVING AREA: 943.70 sq ft • FLOORS: 2 • ROOMS: 11



## ▼ Photos/Kitchen



**Kempsters**  
ESTATE AGENTS

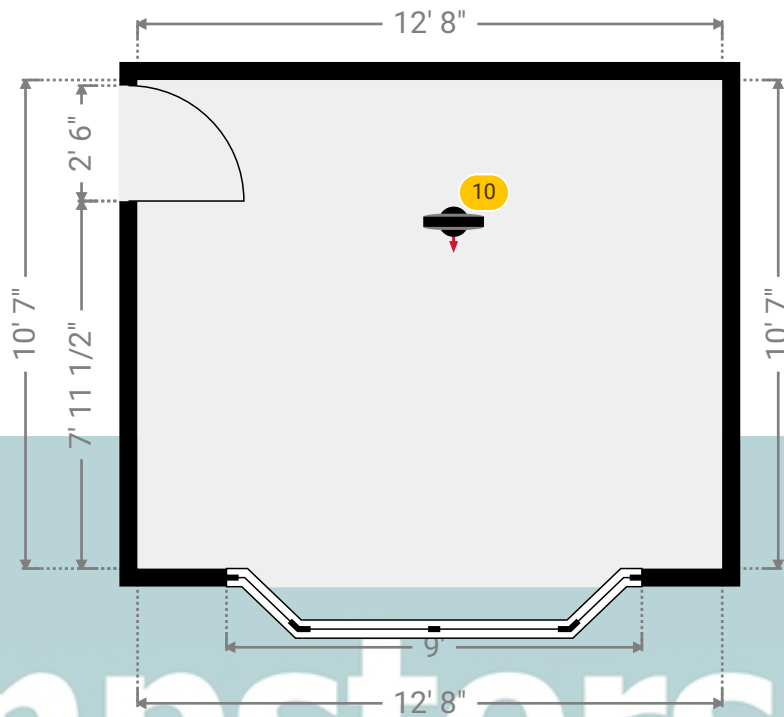
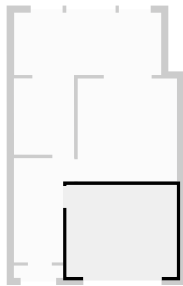
# 261 Rectory Road

261 Rectory Road, RM17 5SW Grays, England, United Kingdom  
TOTAL AREA: 943.70 sq ft • LIVING AREA: 943.70 sq ft • FLOORS: 2 • ROOMS: 11



## ▼ Lounge Ground Floor

WIDTH: 12' 8" • LENGTH: 10' 7"  
AREA: 134.06 sq ft • PERIMETER: 46' 6"



## ▼ Lounge/Ground Floor

Photos  
2 Photos (see photos page)

### 10 360 PANORAMA

Photo  
1 Photo (see photos page)



# 261 Rectory Road

261 Rectory Road, RM17 5SW Grays, England, United Kingdom  
TOTAL AREA: 943.70 sq ft • LIVING AREA: 943.70 sq ft • FLOORS: 2 • ROOMS: 11



## ▼ Photos/Lounge



**Kempsters**  
ESTATE AGENTS

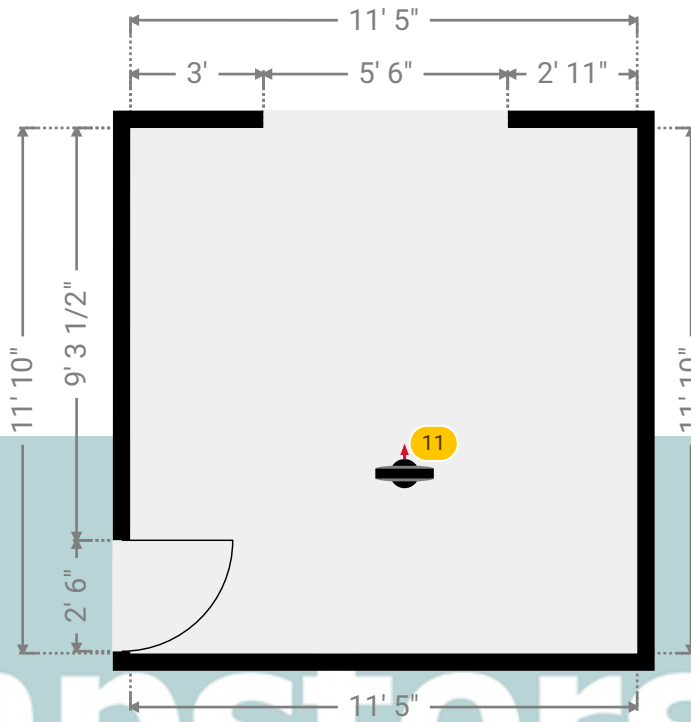
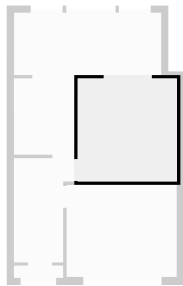
# 261 Rectory Road

261 Rectory Road, RM17 5SW Grays, England, United Kingdom  
TOTAL AREA: 943.70 sq ft • LIVING AREA: 943.70 sq ft • FLOORS: 2 • ROOMS: 11



## ▼ Sitting Room Ground Floor

WIDTH: 11' 5" • LENGTH: 11' 10"  
AREA: 135.11 sq ft • PERIMETER: 46' 6"



## ▼ Sitting Room/Ground Floor

Photos  
2 Photos (see photos page)

### 11 360 PANORAMA

Photo  
1 Photo (see photos page)

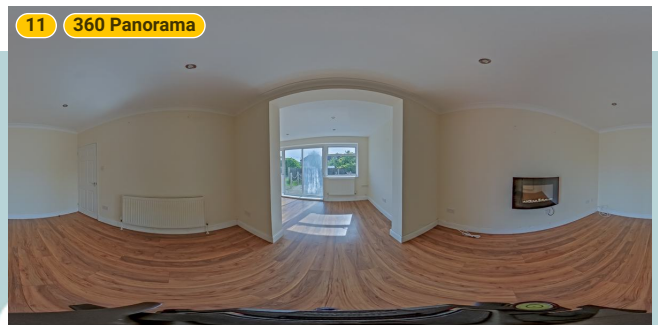
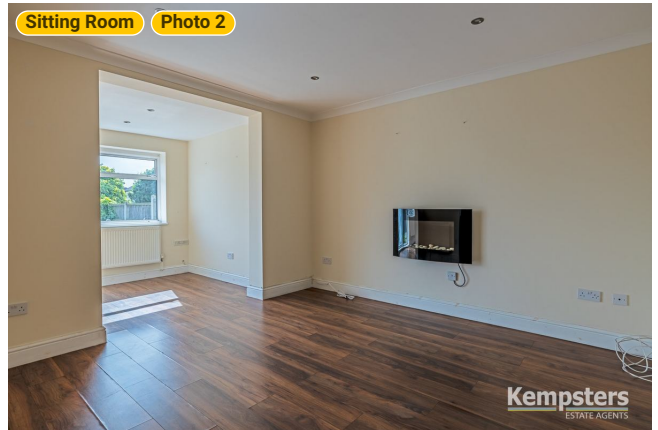
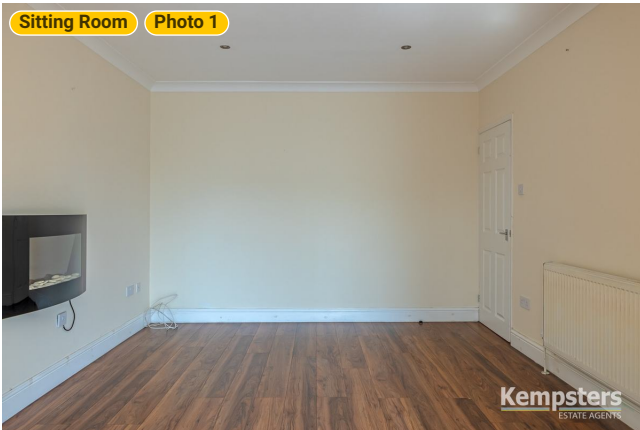


# 261 Rectory Road

261 Rectory Road, RM17 5SW Grays, England, United Kingdom  
TOTAL AREA: 943.70 sq ft • LIVING AREA: 943.70 sq ft • FLOORS: 2 • ROOMS: 11



## ▼ Photos/Sitting Room



**Kempsters**  
ESTATE AGENTS



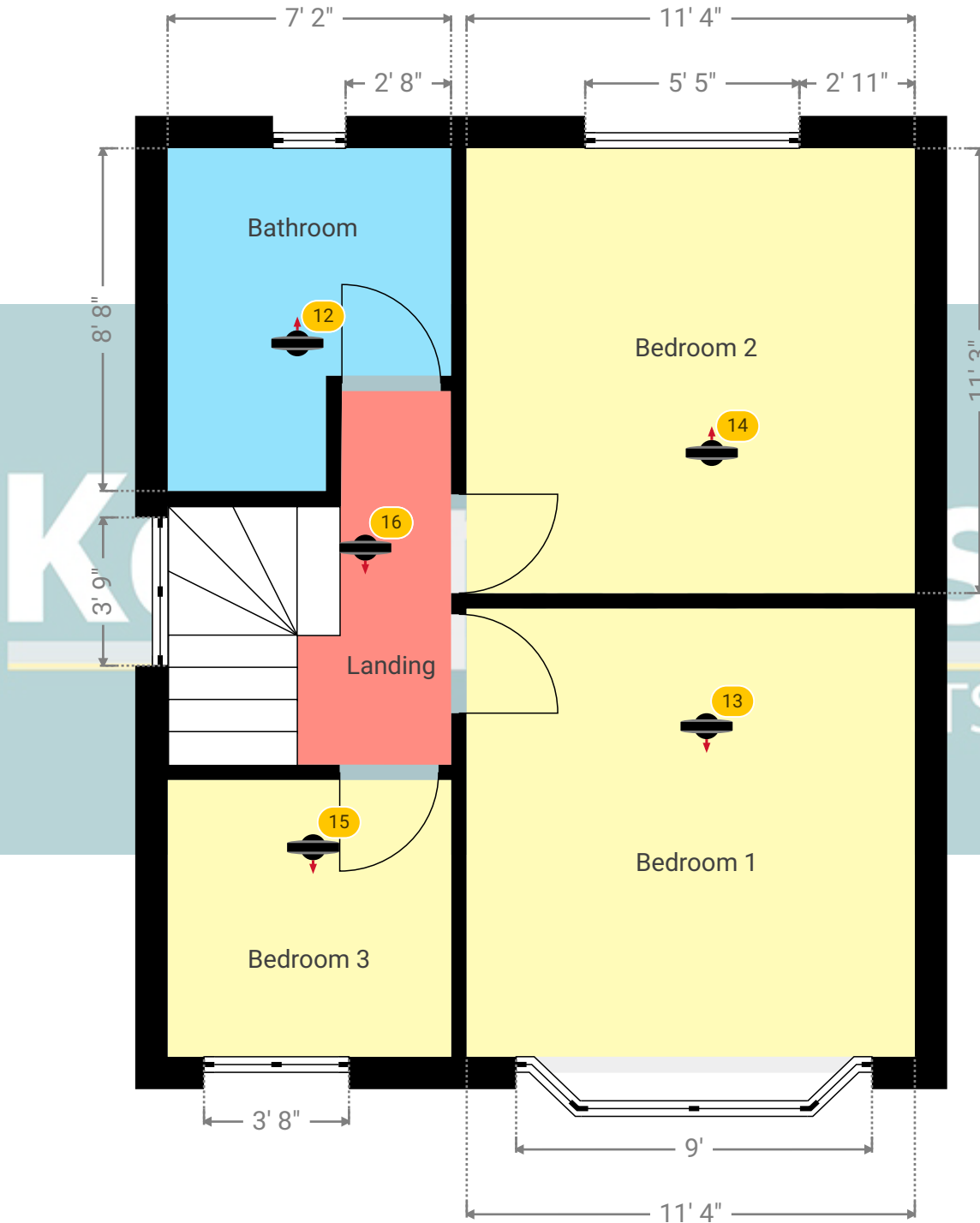
# 261 Rectory Road

261 Rectory Road, RM17 5SW Grays, England, United Kingdom  
TOTAL AREA: 943.70 sq ft • LIVING AREA: 943.70 sq ft • FLOORS: 2 • ROOMS: 11

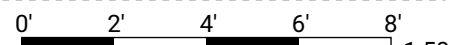


## ▼ 1st Floor

TOTAL AREA: 413.53 sq ft • LIVING AREA: 413.53 sq ft • ROOMS: 5



Kempsters Estate Agents take no responsibility for any error, omission, misstatement or use of data shown. This plan is for illustrative purposes only and whilst every attempt has been made to ensure the accuracy of the floorplan shown, all measurements, positioning, fixtures, fittings and any other data shown are an approximate interpretation for illustrative purposes only. These plans are the property of Kempsters Estate Agents Ltd and must not be reproduced in any form without our permission.



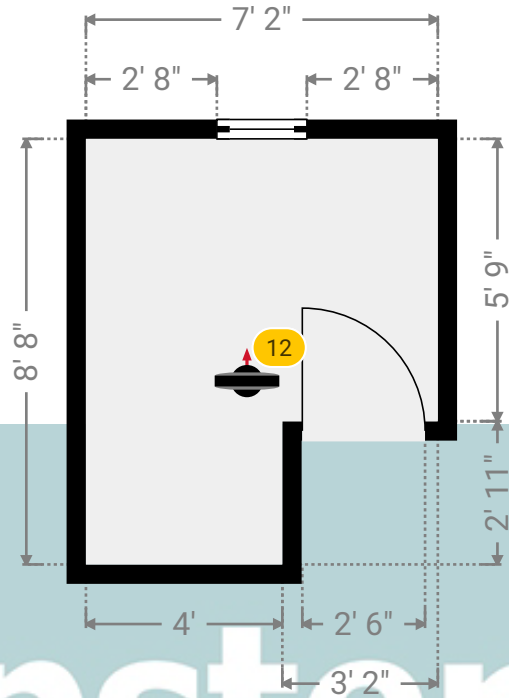
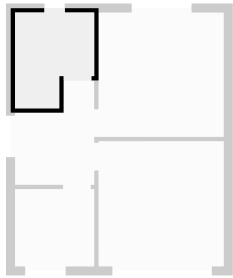
# 261 Rectory Road

261 Rectory Road, RM17 5SW Grays, England, United Kingdom  
TOTAL AREA: 943.70 sq ft • LIVING AREA: 943.70 sq ft • FLOORS: 2 • ROOMS: 11



## ▼ Bathroom 1st Floor

WIDTH: 7' 2" • LENGTH: 8' 8"  
AREA: 52.87 sq ft • PERIMETER: 31' 8"



# Kempsters

ESTATE AGENTS

## ▼ Bathroom/1st Floor

Photos  
2 Photos (see photos page)

### 12 360 PANORAMA

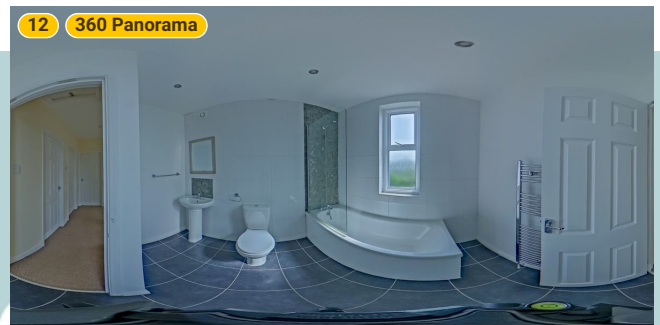
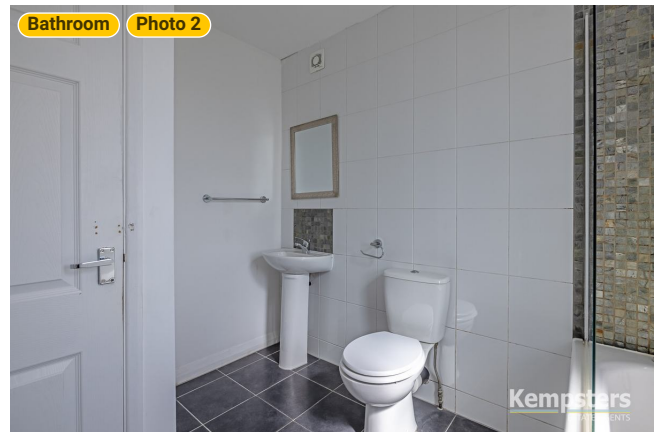
Photo  
1 Photo (see photos page)



## 261 Rectory Road

261 Rectory Road, RM17 5SW Grays, England, United Kingdom  
TOTAL AREA: 943.70 sq ft • LIVING AREA: 943.70 sq ft • FLOORS: 2 • ROOMS: 11

### ▼ Photos/Bathroom



**Kempsters**  
ESTATE AGENTS

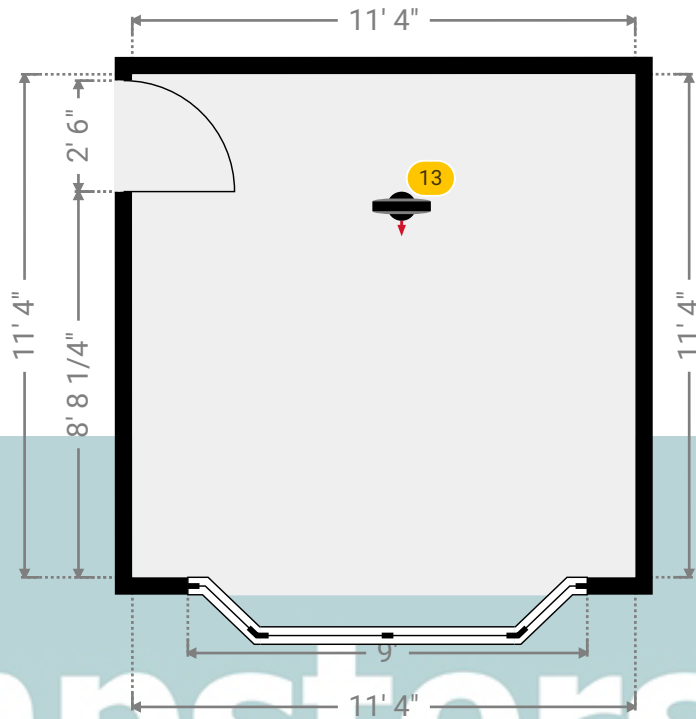
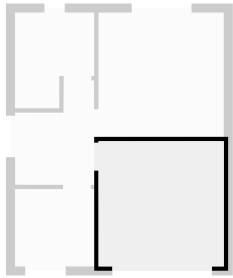
# 261 Rectory Road

261 Rectory Road, RM17 5SW Grays, England, United Kingdom  
TOTAL AREA: 943.70 sq ft • LIVING AREA: 943.70 sq ft • FLOORS: 2 • ROOMS: 11



## ▼ Bedroom 1 1st Floor

WIDTH: 11' 4" • LENGTH: 11' 4"  
AREA: 128.45 sq ft • PERIMETER: 45' 4"



## ▼ Bedroom 1/1st Floor

Photo  
1 Photo (see photos page)

### 13 360 PANORAMA

Photo  
1 Photo (see photos page)

**Kempsters**  
ESTATE AGENTS



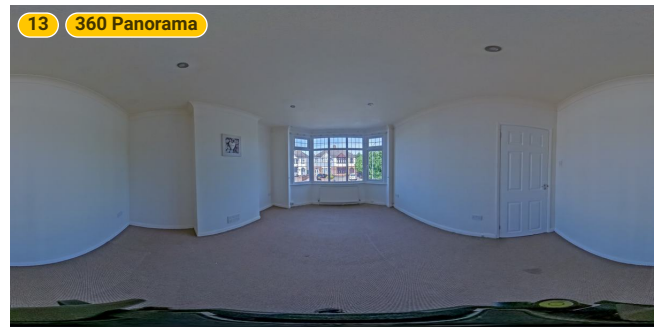
## 261 Rectory Road

261 Rectory Road, RM17 5SW Grays, England, United Kingdom

TOTAL AREA: 943.70 sq ft • LIVING AREA: 943.70 sq ft • FLOORS: 2 • ROOMS: 11

**Kempsters**  
ESTATE AGENTS

### ▼ Photos/Bedroom 1



**Kempsters**  
ESTATE AGENTS



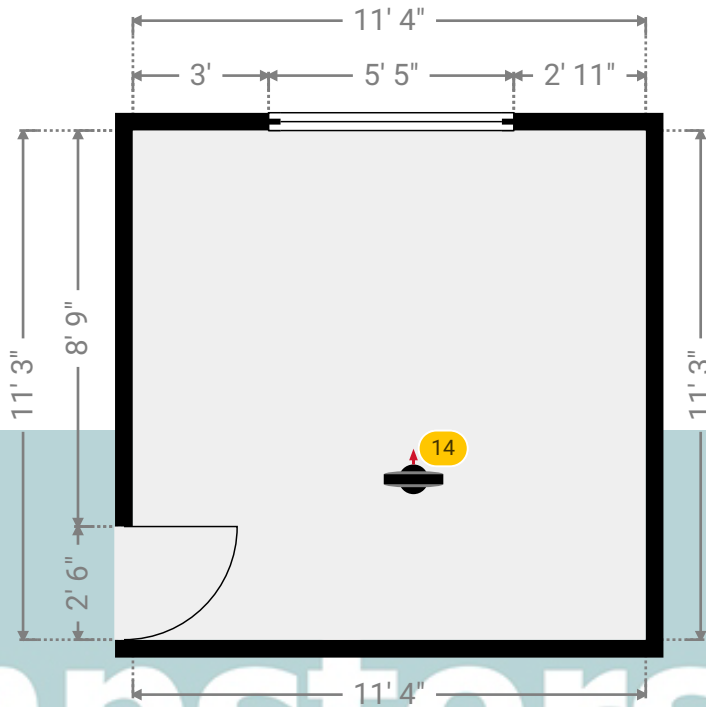
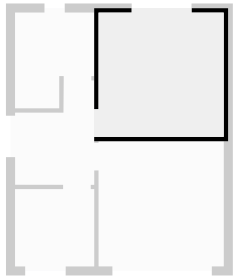
# 261 Rectory Road

261 Rectory Road, RM17 5SW Grays, England, United Kingdom  
TOTAL AREA: 943.70 sq ft • LIVING AREA: 943.70 sq ft • FLOORS: 2 • ROOMS: 11



## ▼ Bedroom 2 1st Floor

WIDTH: 11' 4" • LENGTH: 11' 3"  
AREA: 127.50 sq ft • PERIMETER: 45' 2"



## ▼ Bedroom 2/1st Floor

Photos  
2 Photos (see photos page)

### 14 360 PANORAMA

Photo  
1 Photo (see photos page)

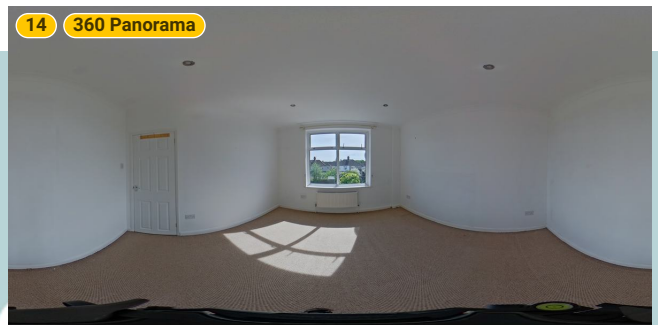


# 261 Rectory Road

261 Rectory Road, RM17 5SW Grays, England, United Kingdom  
TOTAL AREA: 943.70 sq ft • LIVING AREA: 943.70 sq ft • FLOORS: 2 • ROOMS: 11



## ▼ Photos/Bedroom 2



**Kempsters**  
ESTATE AGENTS

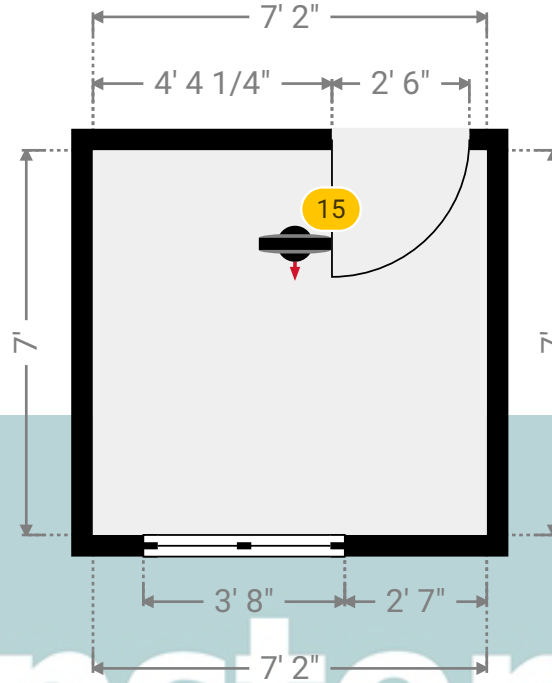
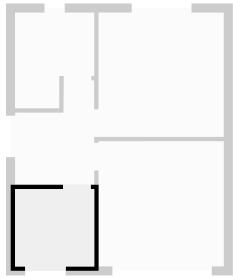
# 261 Rectory Road

261 Rectory Road, RM17 5SW Grays, England, United Kingdom  
TOTAL AREA: 943.70 sq ft • LIVING AREA: 943.70 sq ft • FLOORS: 2 • ROOMS: 11



## ▼ Bedroom 3 1st Floor

WIDTH: 7' 2" • LENGTH: 7'  
AREA: 50.17 sq ft • PERIMETER: 28' 4"



## ▼ Bedroom 3/1st Floor

Photo  
1 Photo (see photos page)

### 15 360 PANORAMA

Photo  
1 Photo (see photos page)



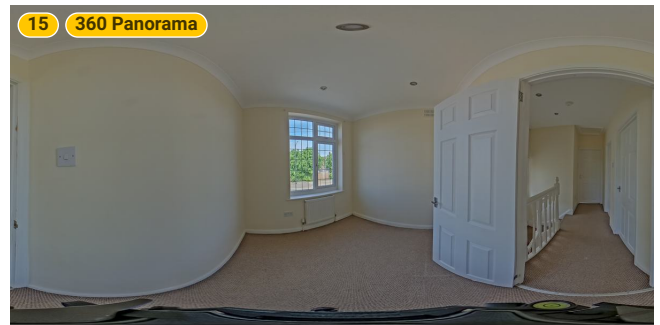
## 261 Rectory Road

261 Rectory Road, RM17 5SW Grays, England, United Kingdom

TOTAL AREA: 943.70 sq ft • LIVING AREA: 943.70 sq ft • FLOORS: 2 • ROOMS: 11

**Kempsters**  
ESTATE AGENTS

### ▼ Photos/Bedroom 3



**Kempsters**  
ESTATE AGENTS

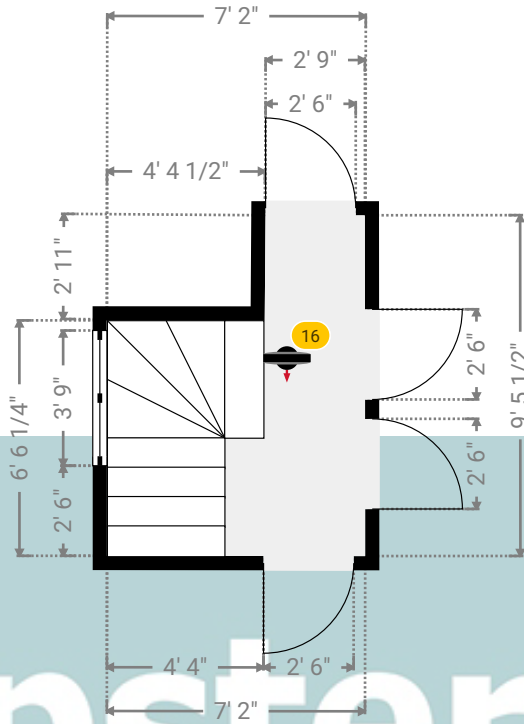
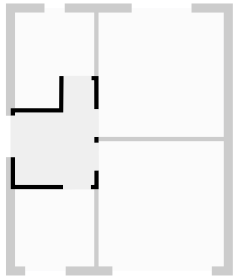
# 261 Rectory Road

261 Rectory Road, RM17 5SW Grays, England, United Kingdom  
TOTAL AREA: 943.70 sq ft • LIVING AREA: 943.70 sq ft • FLOORS: 2 • ROOMS: 11



## ▼ Landing 1st Floor

WIDTH: 7' 2" • LENGTH: 9' 5 1/2"  
AREA: 54.82 sq ft • PERIMETER: 33' 2 1/4"



# Kempsters

ESTATE AGENTS

## ▼ Landing /1st Floor

Photos  
2 Photos (see photos page)

### 16 360 PANORAMA

Photo  
1 Photo (see photos page)



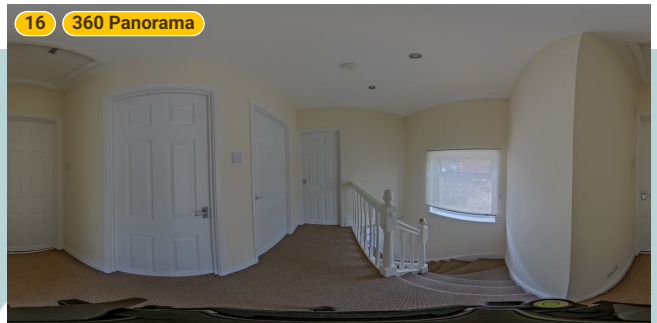
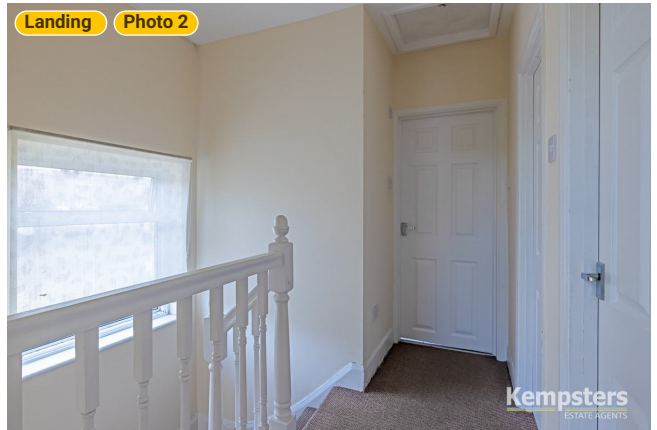
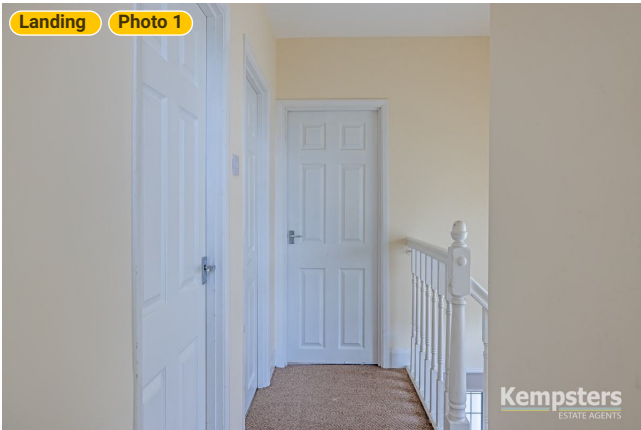


# 261 Rectory Road

261 Rectory Road, RM17 5SW Grays, England, United Kingdom  
TOTAL AREA: 943.70 sq ft • LIVING AREA: 943.70 sq ft • FLOORS: 2 • ROOMS: 11



## ▼ Photos/Landing



**Kempsters**  
ESTATE AGENTS