

36 Bradleigh Avenue

SUBMITTED BY
Ian
ianhk@icloud.com

CREATED ON
2024-02-13

LOCATION
36 Bradleigh Ave
RM17 5XD Grays
England
United Kingdom



Total area
2273.96 sq ft

Floors
2

Rooms
19

Bathrooms
2

Photos
6 Photos (see photos page)

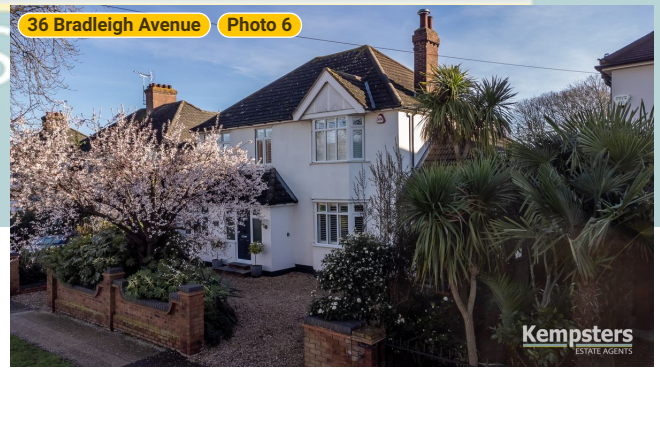
Kempsters

ESTATE AGENTS

36 Bradleigh Avenue

36 Bradleigh Ave, RM17 5XD Grays, England, United Kingdom
TOTAL AREA: 2273.96 sq ft • LIVING AREA: 1930.06 sq ft • FLOORS: 2 • ROOMS: 19

▼ Photos/36 Bradleigh Avenue



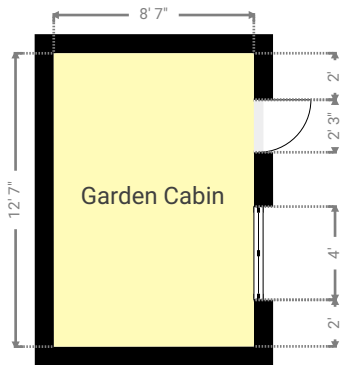
36 Bradleigh Avenue

36 Bradleigh Ave, RM17 5XD Grays, England, United Kingdom
 TOTAL AREA: 2273.96 sq ft • LIVING AREA: 1930.06 sq ft • FLOORS: 2 • ROOMS: 19

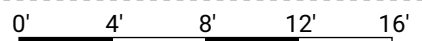


▼ Ground Floor

TOTAL AREA: 1447.63 sq ft • LIVING AREA: 1103.73 sq ft • ROOMS: 11



Kempsters Estate Agents take no responsibility for any error, omission, misstatement or use of data shown. This plan is for illustrative purposes only and whilst every attempt has been made to ensure the accuracy of the floorplan shown, all measurements, positioning, fixtures, fittings and any other data shown are an approximate interpretation for illustrative purposes only. These plans are the property of Kempsters Estate Agents Ltd and must not be reproduced in any form without our permission.



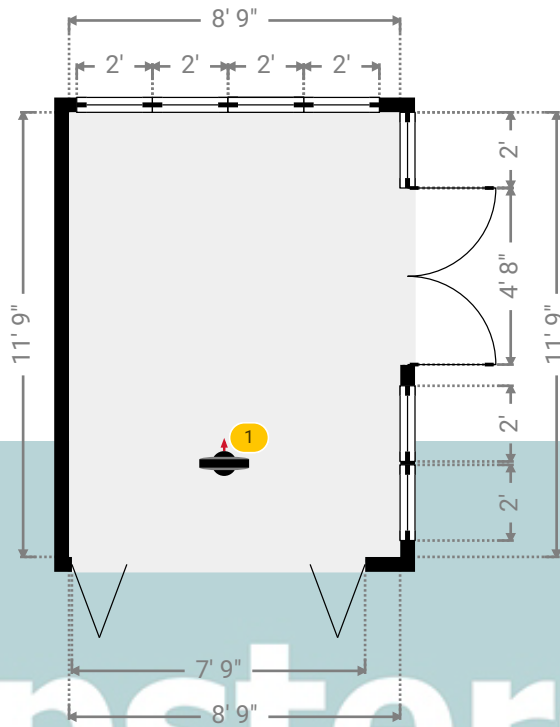
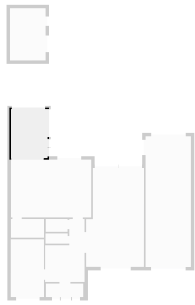
36 Bradleigh Avenue

36 Bradleigh Ave, RM17 5XD Grays, England, United Kingdom
TOTAL AREA: 2273.96 sq ft • LIVING AREA: 1930.06 sq ft • FLOORS: 2 • ROOMS: 19



▼ Conservatory Ground Floor

WIDTH: 8' 9" • LENGTH: 11' 9"
AREA: 102.81 sq ft • PERIMETER: 41'



▼ Conservatory/Ground Floor

Photo
1 Photo (see photos page)

1 360 PANORAMA

Photo
1 Photo (see photos page)



36 Bradleigh Avenue

36 Bradleigh Ave, RM17 5XD Grays, England, United Kingdom

TOTAL AREA: 2273.96 sq ft • LIVING AREA: 1930.06 sq ft • FLOORS: 2 • ROOMS: 19

Kempsters
ESTATE AGENTS

▼ Photos/Conservatory



Kempsters

ESTATE AGENTS

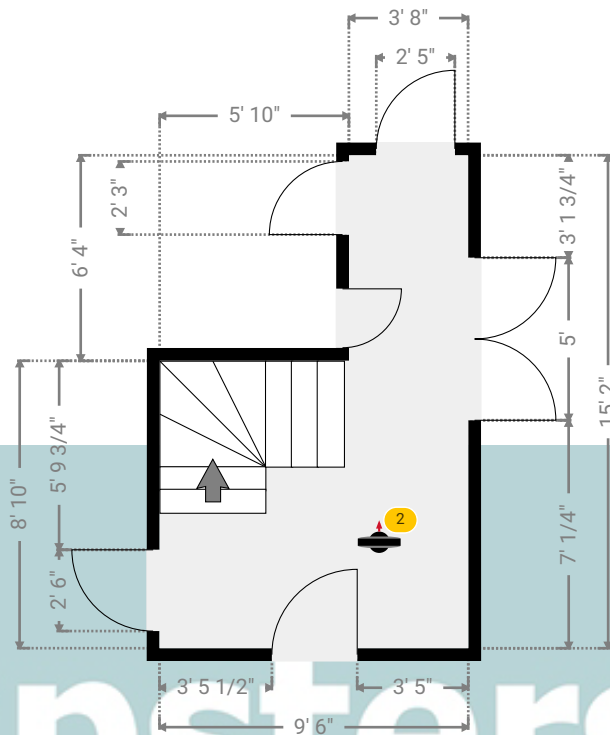
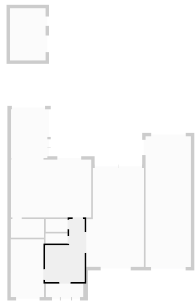
36 Bradleigh Avenue

36 Bradleigh Ave, RM17 5XD Grays, England, United Kingdom
TOTAL AREA: 2273.96 sq ft • LIVING AREA: 1930.06 sq ft • FLOORS: 2 • ROOMS: 19



▼ Hall Ground Floor

WIDTH: 9' 6" • LENGTH: 15' 2"
AREA: 107.16 sq ft • PERIMETER: 49' 3 3/4"



▼ Hall/Ground Floor

Photos
2 Photos (see photos page)

2 360 PANORAMA

Photo
1 Photo (see photos page)

Kempsters

ESTATE AGENTS



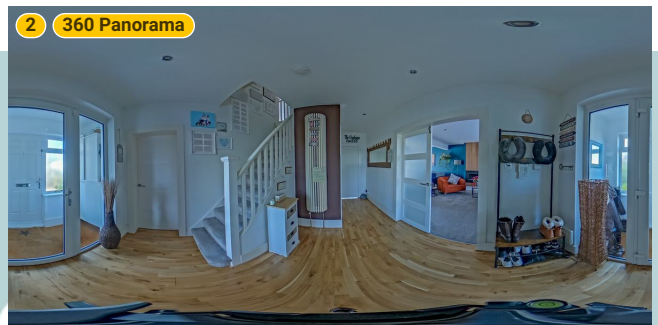
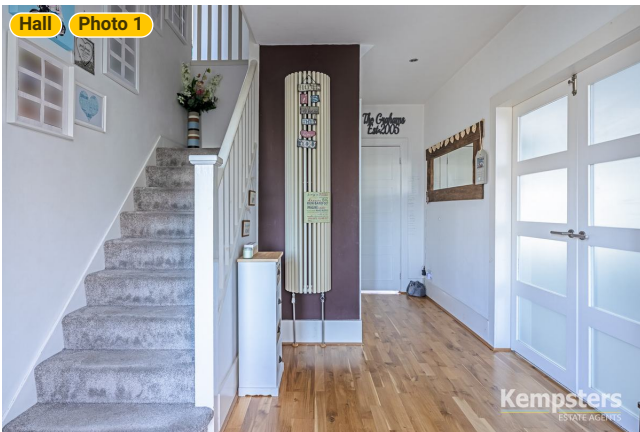
36 Bradleigh Avenue

36 Bradleigh Ave, RM17 5XD Grays, England, United Kingdom

TOTAL AREA: 2273.96 sq ft • LIVING AREA: 1930.06 sq ft • FLOORS: 2 • ROOMS: 19



▼ Photos/Hall



Kempsters

ESTATE AGENTS

36 Bradleigh Avenue

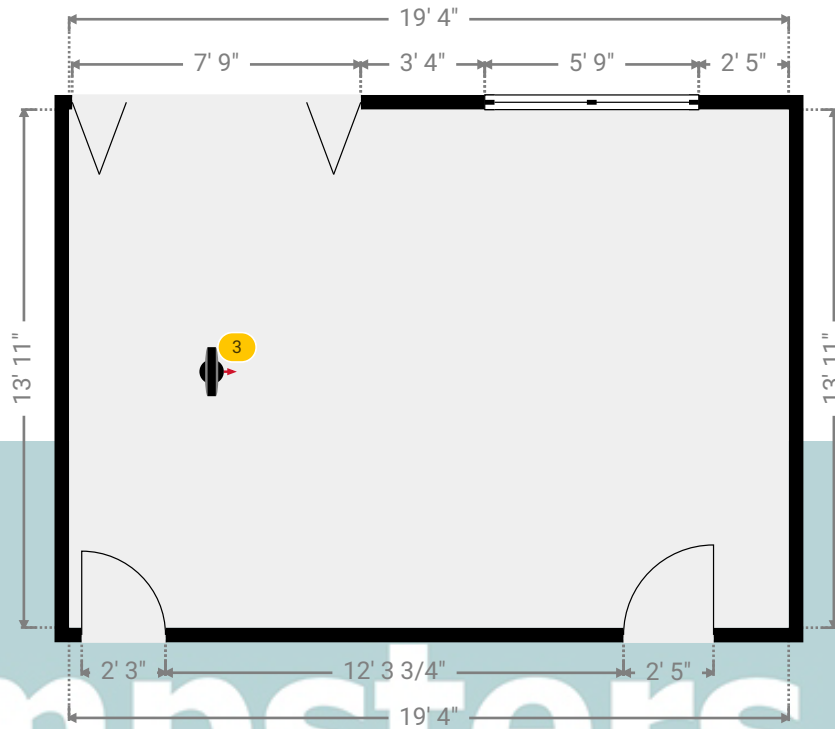
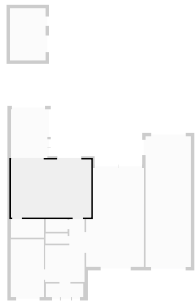
36 Bradleigh Ave, RM17 5XD Grays, England, United Kingdom

TOTAL AREA: 2273.96 sq ft • LIVING AREA: 1930.06 sq ft • FLOORS: 2 • ROOMS: 19



▼ Kitchen Ground Floor

WIDTH: 19' 4" • LENGTH: 13' 11"
AREA: 269.01 sq ft • PERIMETER: 66' 6"



▼ Kitchen/Ground Floor

Photos

9 Photos (see photos page)

3 360 PANORAMA

Photo

1 Photo (see photos page)



36 Bradleigh Avenue

36 Bradleigh Ave, RM17 5XD Grays, England, United Kingdom

TOTAL AREA: 2273.96 sq ft • LIVING AREA: 1930.06 sq ft • FLOORS: 2 • ROOMS: 19

▼ Photos/Kitchen



36 Bradleigh Avenue

36 Bradleigh Ave, RM17 5XD Grays, England, United Kingdom
TOTAL AREA: 2273.96 sq ft • LIVING AREA: 1930.06 sq ft • FLOORS: 2 • ROOMS: 19



▼ Photos/Kitchen



KEMPSTERS
ESTATE AGENTS

36 Bradleigh Avenue

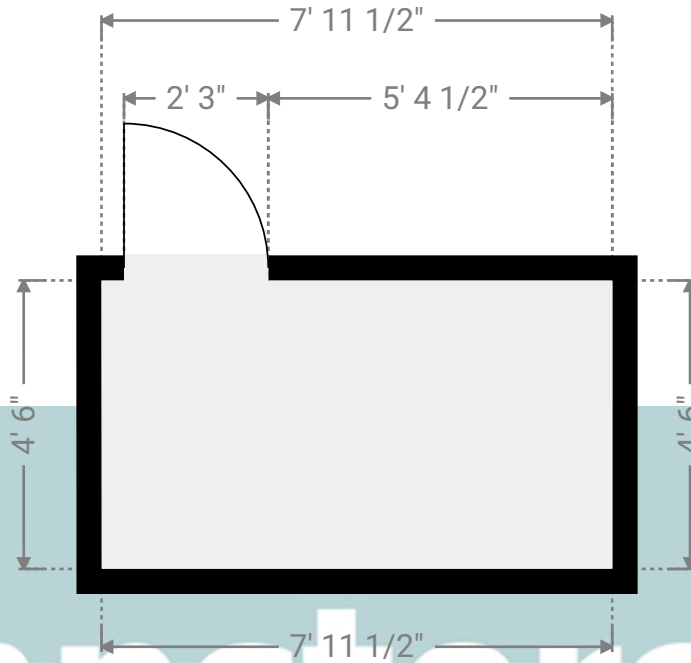
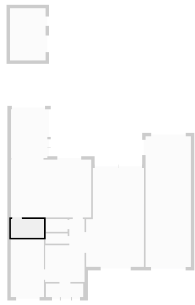
36 Bradleigh Ave, RM17 5XD Grays, England, United Kingdom

TOTAL AREA: 2273.96 sq ft • LIVING AREA: 1930.06 sq ft • FLOORS: 2 • ROOMS: 19



▼ Laundry Room Ground Floor

WIDTH: 7' 11 1/2" • LENGTH: 4' 6"
AREA: 35.85 sq ft • PERIMETER: 24' 11 1/4"



▼ Laundry Room/Ground Floor

Photo

1 Photo (see photos page)



36 Bradleigh Avenue

36 Bradleigh Ave, RM17 5XD Grays, England, United Kingdom

TOTAL AREA: 2273.96 sq ft • LIVING AREA: 1930.06 sq ft • FLOORS: 2 • ROOMS: 19

Kempsters
ESTATE AGENTS

▼ Photos/Laundry Room



Kempsters

ESTATE AGENTS

36 Bradleigh Avenue

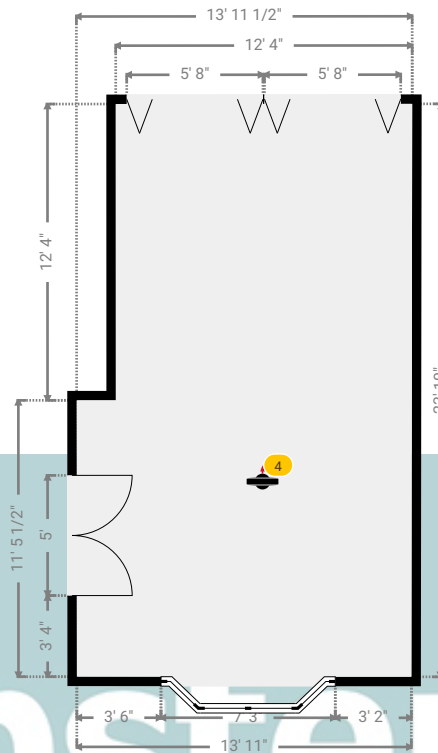
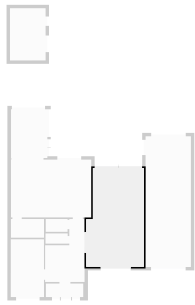
36 Bradleigh Ave, RM17 5XD Grays, England, United Kingdom

TOTAL AREA: 2273.96 sq ft • LIVING AREA: 1930.06 sq ft • FLOORS: 2 • ROOMS: 19



▼ Lounge Ground Floor

WIDTH: 13' 11 1/2" • LENGTH: 23' 10"
AREA: 312.06 sq ft • PERIMETER: 75' 6 1/4"



▼ Lounge/Ground Floor

Photos

8 Photos (see photos page)

4 360 PANORAMA

Photo

1 Photo (see photos page)

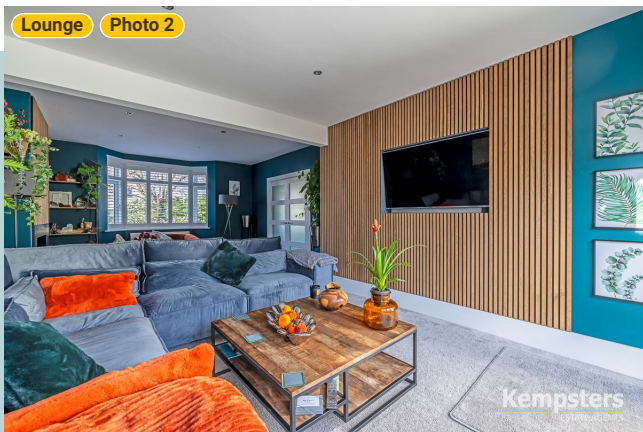


36 Bradleigh Avenue

36 Bradleigh Ave, RM17 5XD Grays, England, United Kingdom
TOTAL AREA: 2273.96 sq ft • LIVING AREA: 1930.06 sq ft • FLOORS: 2 • ROOMS: 19



▼ Photos/Lounge



36 Bradleigh Avenue

36 Bradleigh Ave, RM17 5XD Grays, England, United Kingdom

TOTAL AREA: 2273.96 sq ft • LIVING AREA: 1930.06 sq ft • FLOORS: 2 • ROOMS: 19



▼ Photos/Lounge



Kempsters

ESTATE AGENTS

36 Bradleigh Avenue

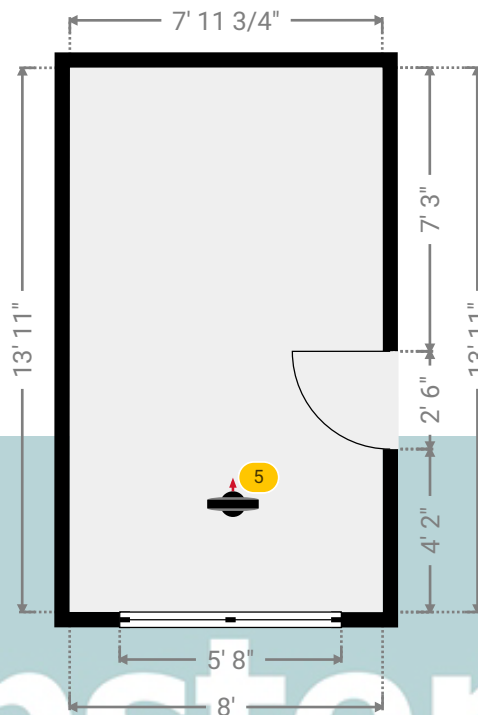
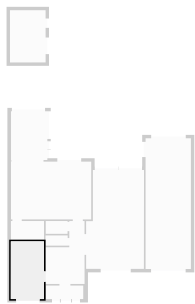
36 Bradleigh Ave, RM17 5XD Grays, England, United Kingdom

TOTAL AREA: 2273.96 sq ft • LIVING AREA: 1930.06 sq ft • FLOORS: 2 • ROOMS: 19



▼ Sitting/Bed 6 Ground Floor

WIDTH: 8' • LENGTH: 13' 11"
AREA: 111.22 sq ft • PERIMETER: 43' 9 3/4"



▼ Sitting/Bed 6/Ground Floor

Photos

3 Photos (see photos page)

5 360 PANORAMA

Photo

1 Photo (see photos page)

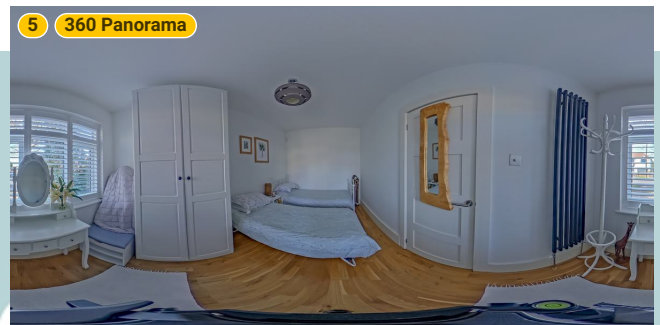
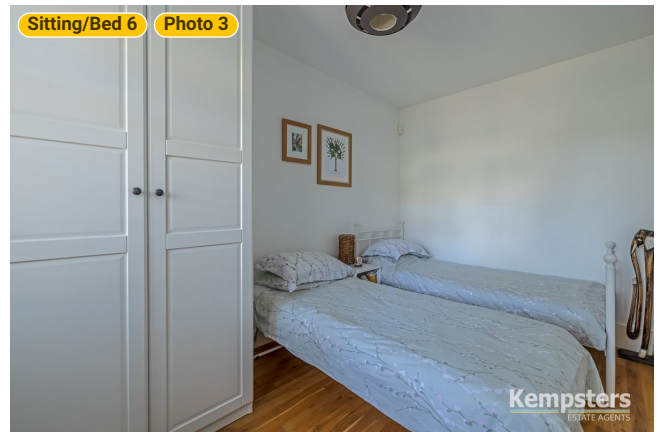


36 Bradleigh Avenue

36 Bradleigh Ave, RM17 5XD Grays, England, United Kingdom

TOTAL AREA: 2273.96 sq ft • LIVING AREA: 1930.06 sq ft • FLOORS: 2 • ROOMS: 19

▼ Photos/Sitting/Bed 6



Kempsters
ESTATE AGENTS

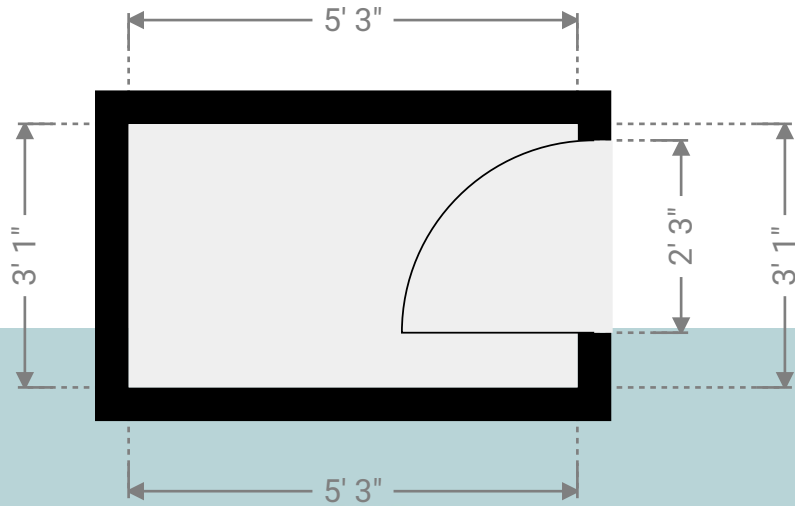
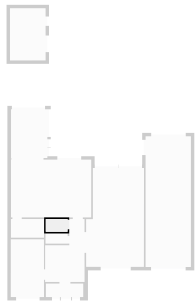
36 Bradleigh Avenue

36 Bradleigh Ave, RM17 5XD Grays, England, United Kingdom
TOTAL AREA: 2273.96 sq ft • LIVING AREA: 1930.06 sq ft • FLOORS: 2 • ROOMS: 19



▼ Toilet Ground Floor

WIDTH: 5' 3" • LENGTH: 3' 1"
AREA: 16.19 sq ft • PERIMETER: 16' 8"



▼ Toilet/Ground Floor

Photo
1 Photo (see photos page)

36 Bradleigh Avenue

36 Bradleigh Ave, RM17 5XD Grays, England, United Kingdom

TOTAL AREA: 2273.96 sq ft • LIVING AREA: 1930.06 sq ft • FLOORS: 2 • ROOMS: 19

Kempsters
ESTATE AGENTS

▼ Photos/Toilet



Kempsters

ESTATE AGENTS

36 Bradleigh Avenue

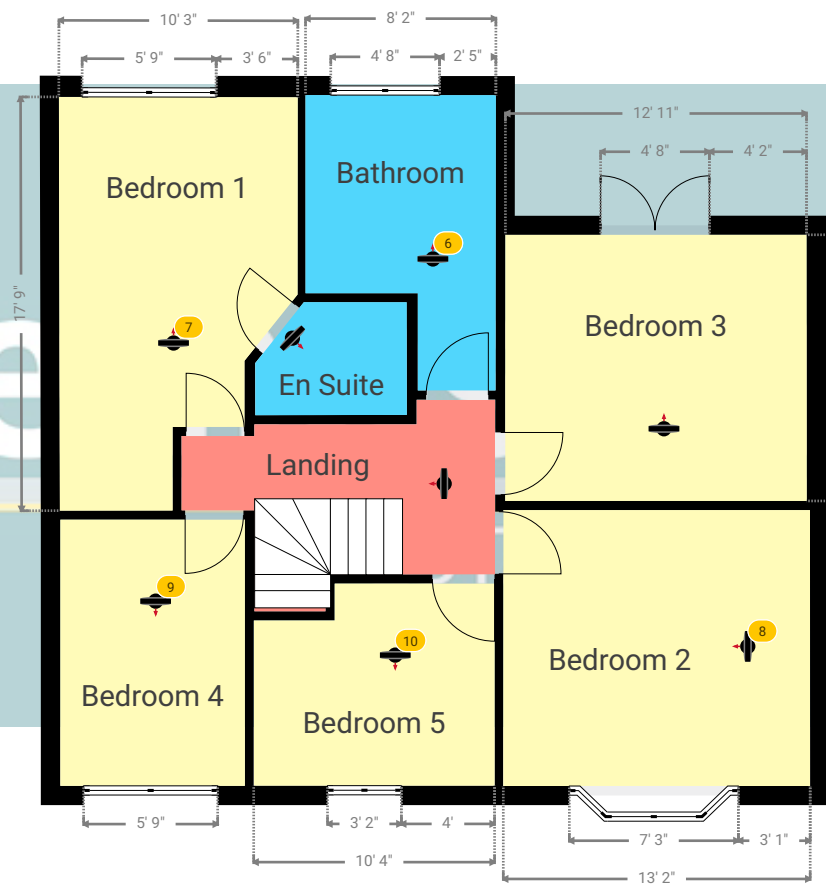
36 Bradleigh Ave, RM17 5XD Grays, England, United Kingdom

TOTAL AREA: 2273.96 sq ft • LIVING AREA: 1930.06 sq ft • FLOORS: 2 • ROOMS: 19



▼ 1st Floor

TOTAL AREA: 826.33 sq ft • LIVING AREA: 826.33 sq ft • ROOMS: 8



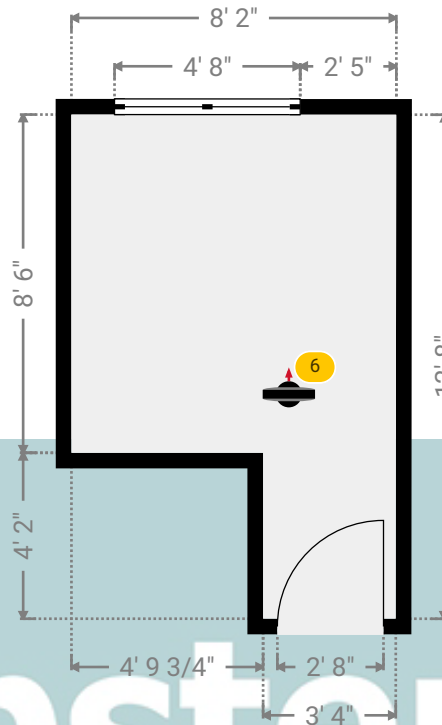
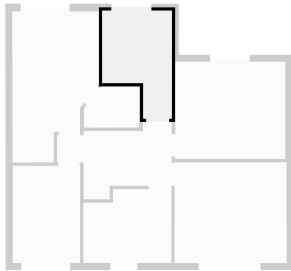
36 Bradleigh Avenue

36 Bradleigh Ave, RM17 5XD Grays, England, United Kingdom
TOTAL AREA: 2273.96 sq ft • LIVING AREA: 1930.06 sq ft • FLOORS: 2 • ROOMS: 19



▼ Bathroom 1st Floor

WIDTH: 8' 2" • LENGTH: 12' 8"
AREA: 83.27 sq ft • PERIMETER: 41' 7 3/4"



Kempsters

ESTATE AGENTS

▼ Bathroom/1st Floor

Photos
2 Photos (see photos page)

6 360 PANORAMA

Photo
1 Photo (see photos page)



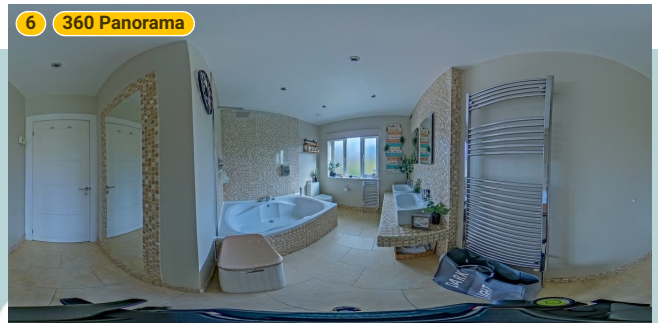
36 Bradleigh Avenue

36 Bradleigh Ave, RM17 5XD Grays, England, United Kingdom

TOTAL AREA: 2273.96 sq ft • LIVING AREA: 1930.06 sq ft • FLOORS: 2 • ROOMS: 19



▼ Photos/Bathroom



Kempsters

ESTATE AGENTS

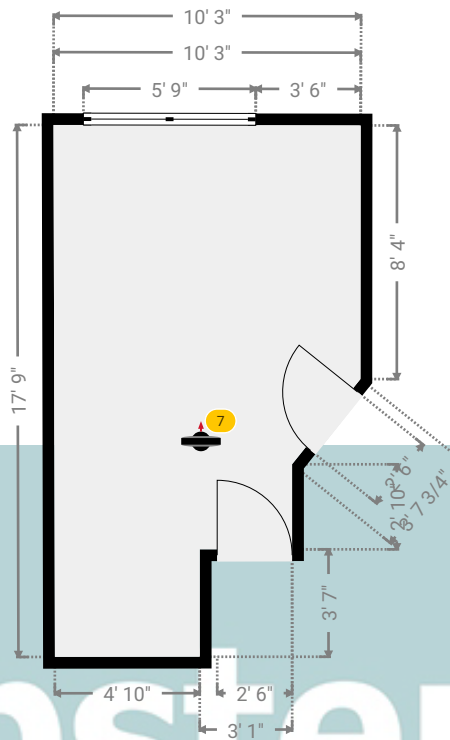
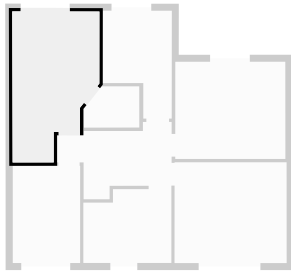
36 Bradleigh Avenue

36 Bradleigh Ave, RM17 5XD Grays, England, United Kingdom
TOTAL AREA: 2273.96 sq ft • LIVING AREA: 1930.06 sq ft • FLOORS: 2 • ROOMS: 19



▼ Bedroom 1 1st Floor

WIDTH: 10' 3" • LENGTH: 17' 9"
AREA: 152.36 sq ft • PERIMETER: 54' 5 1/4"



▼ Bedroom 1/1st Floor

Photos
2 Photos (see photos page)

7 360 PANORAMA

Photo
1 Photo (see photos page)

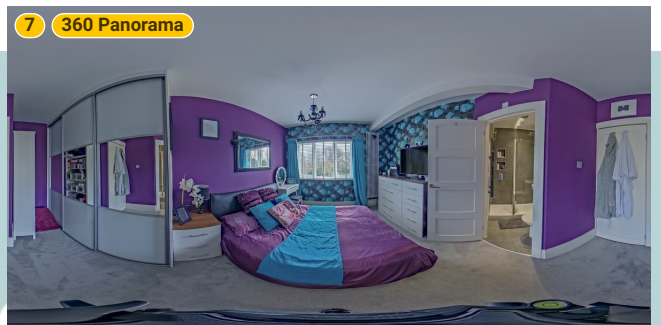
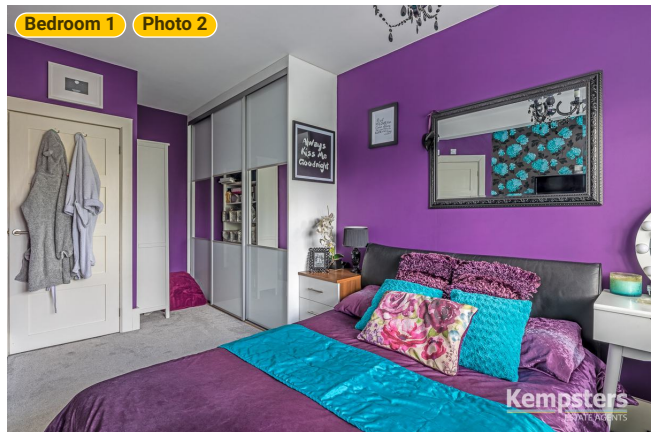
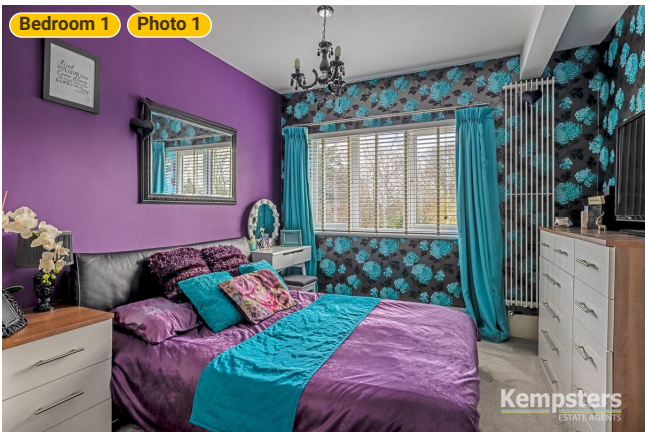


36 Bradleigh Avenue

36 Bradleigh Ave, RM17 5XD Grays, England, United Kingdom
TOTAL AREA: 2273.96 sq ft • LIVING AREA: 1930.06 sq ft • FLOORS: 2 • ROOMS: 19



▼ Photos/Bedroom 1



Kempsters

ESTATE AGENTS

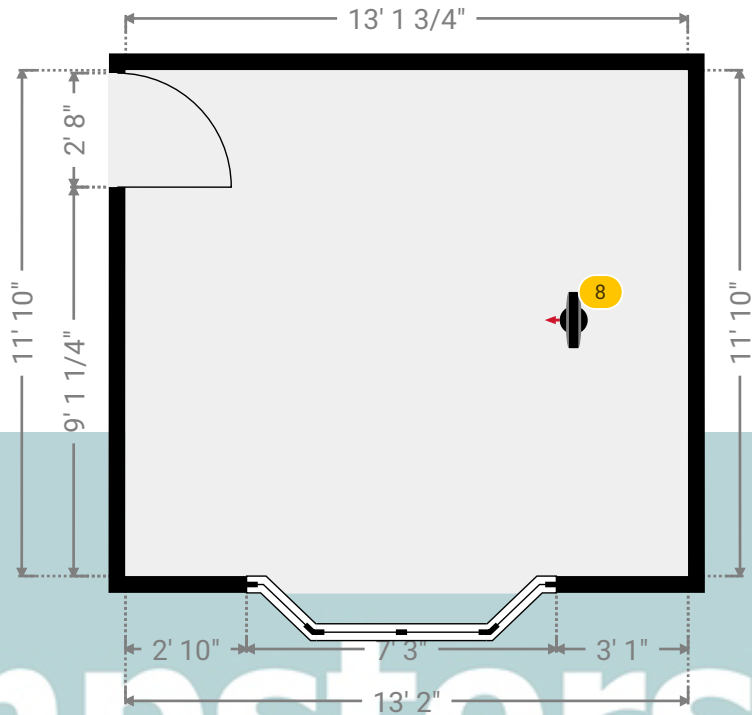
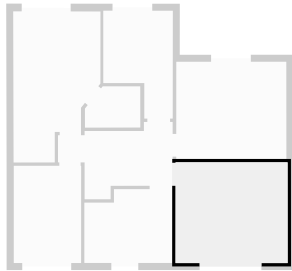
36 Bradleigh Avenue

36 Bradleigh Ave, RM17 5XD Grays, England, United Kingdom
TOTAL AREA: 2273.96 sq ft • LIVING AREA: 1930.06 sq ft • FLOORS: 2 • ROOMS: 19



▼ Bedroom 2 1st Floor

WIDTH: 13' 2" • LENGTH: 11' 10"
AREA: 155.72 sq ft • PERIMETER: 49' 11 3/4"



▼ Bedroom 2/1st Floor

Photos
2 Photos (see photos page)

8 360 PANORAMA
Photo
1 Photo (see photos page)

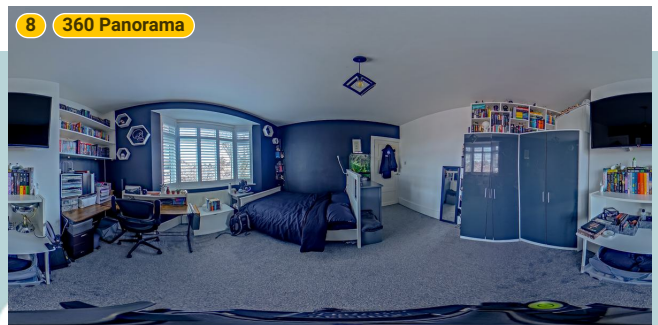
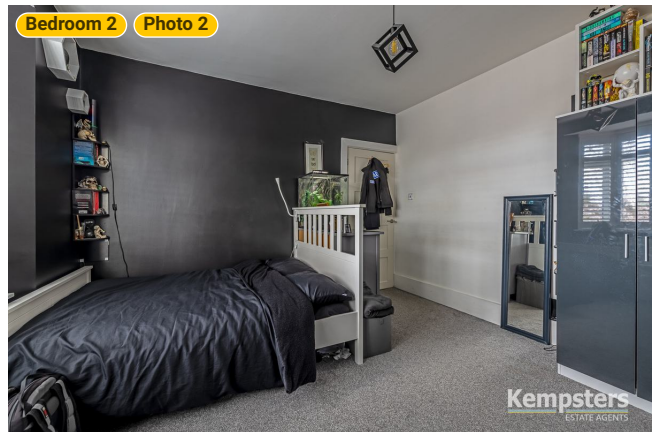
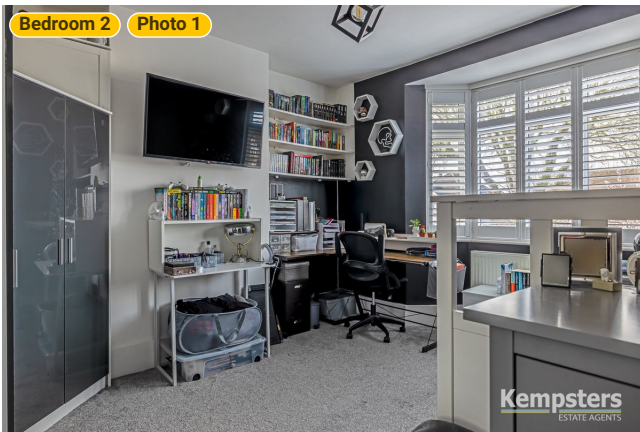


36 Bradleigh Avenue

36 Bradleigh Ave, RM17 5XD Grays, England, United Kingdom
TOTAL AREA: 2273.96 sq ft • LIVING AREA: 1930.06 sq ft • FLOORS: 2 • ROOMS: 19



▼ Photos/Bedroom 2



Kempsters

ESTATE AGENTS

36 Bradleigh Avenue

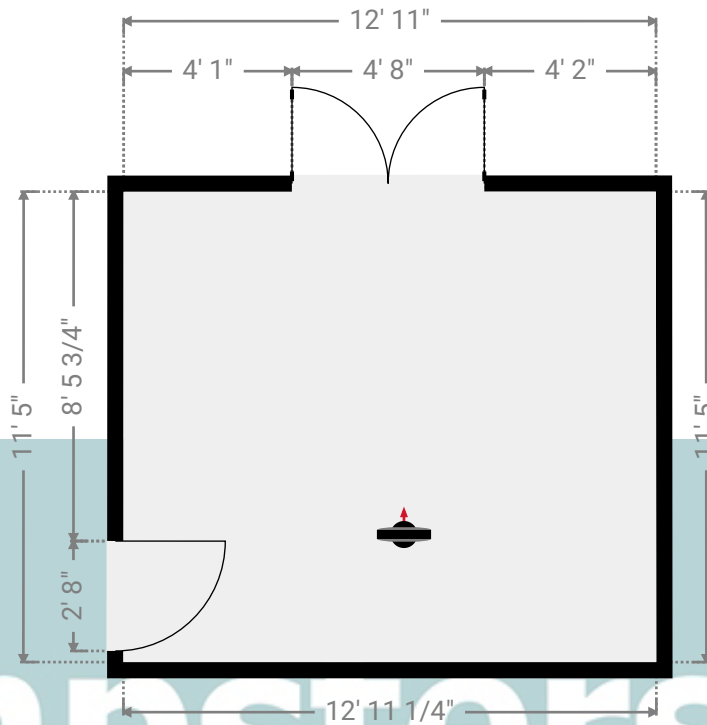
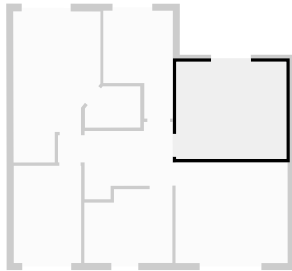
36 Bradleigh Ave, RM17 5XD Grays, England, United Kingdom

TOTAL AREA: 2273.96 sq ft • LIVING AREA: 1930.06 sq ft • FLOORS: 2 • ROOMS: 19



▼ Bedroom 3 1st Floor

WIDTH: 12' 11 1/4" • LENGTH: 11' 5"
AREA: 147.54 sq ft • PERIMETER: 48' 8 1/4"



▼ Bedroom 3/1st Floor

Photos

2 Photos (see photos page)



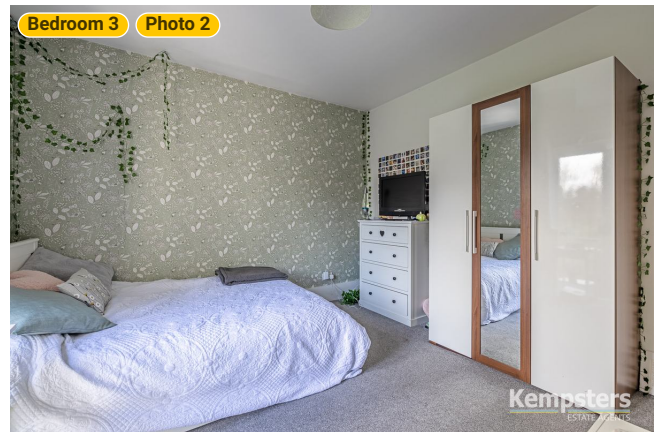
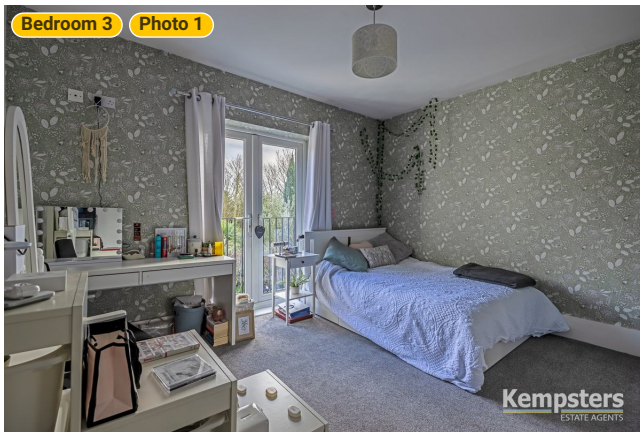
36 Bradleigh Avenue

36 Bradleigh Ave, RM17 5XD Grays, England, United Kingdom

TOTAL AREA: 2273.96 sq ft • LIVING AREA: 1930.06 sq ft • FLOORS: 2 • ROOMS: 19

Kempsters
ESTATE AGENTS

▼ Photos/Bedroom 3



Kempsters
ESTATE AGENTS

36 Bradleigh Avenue

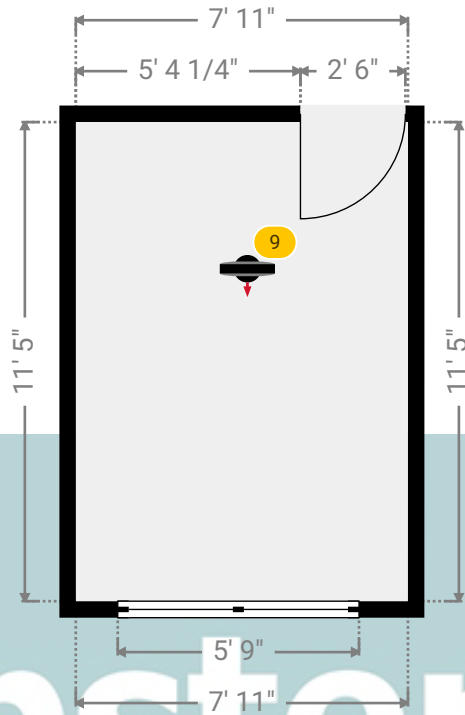
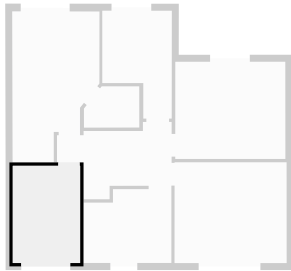
36 Bradleigh Ave, RM17 5XD Grays, England, United Kingdom

TOTAL AREA: 2273.96 sq ft • LIVING AREA: 1930.06 sq ft • FLOORS: 2 • ROOMS: 19



▼ Bedroom 4 1st Floor

WIDTH: 7' 11" • LENGTH: 11' 5"
AREA: 90.38 sq ft • PERIMETER: 38' 8"



Kempsters

ESTATE AGENTS

▼ Bedroom 4/1st Floor

Photo

1 Photo (see photos page)

9 360 PANORAMA

Photo

1 Photo (see photos page)



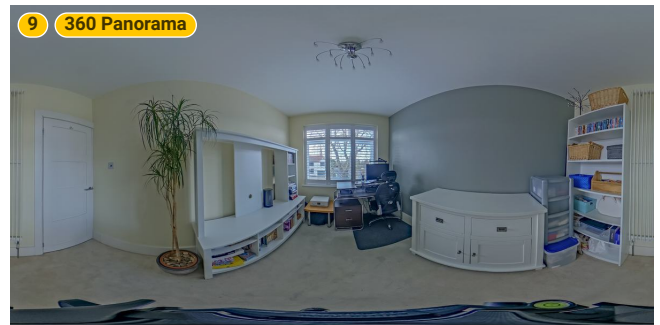
36 Bradleigh Avenue

36 Bradleigh Ave, RM17 5XD Grays, England, United Kingdom

TOTAL AREA: 2273.96 sq ft • LIVING AREA: 1930.06 sq ft • FLOORS: 2 • ROOMS: 19

Kempsters
ESTATE AGENTS

▼ Photos/Bedroom 4



Kempsters
ESTATE AGENTS

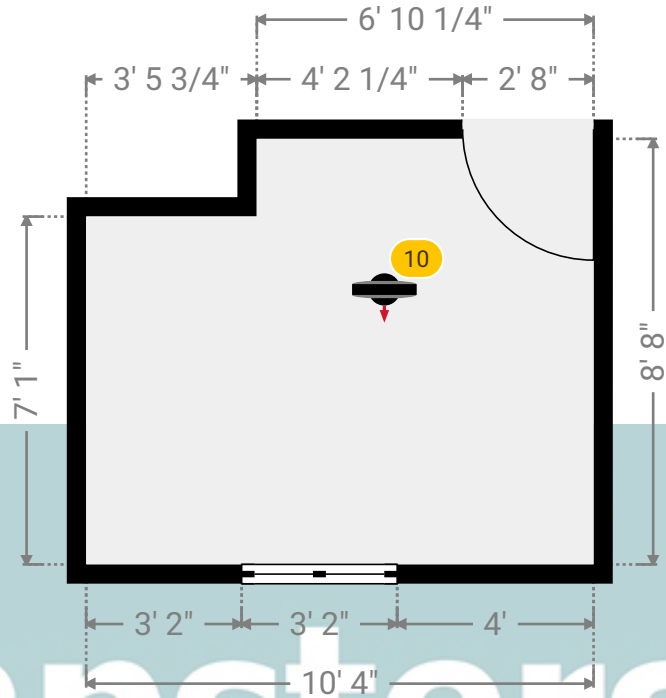
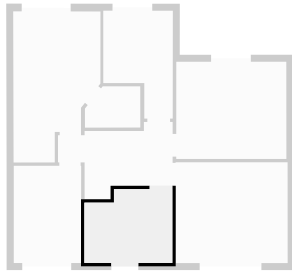
36 Bradleigh Avenue

36 Bradleigh Ave, RM17 5XD Grays, England, United Kingdom
TOTAL AREA: 2273.96 sq ft • LIVING AREA: 1930.06 sq ft • FLOORS: 2 • ROOMS: 19



▼ Bedroom 5 1st Floor

WIDTH: 10' 4" • LENGTH: 8' 8"
AREA: 84.05 sq ft • PERIMETER: 38'



▼ Bedroom 5/1st Floor

Photo
1 Photo (see photos page)

10 360 PANORAMA

Photo
1 Photo (see photos page)



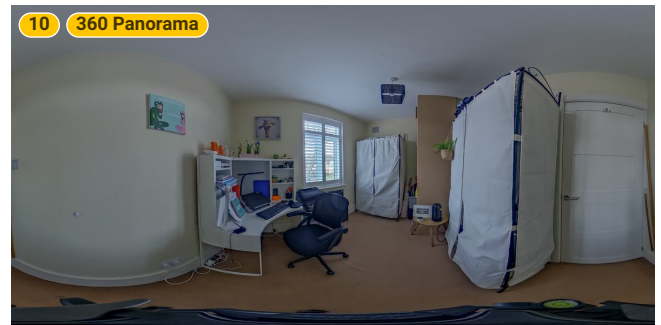
36 Bradleigh Avenue

36 Bradleigh Ave, RM17 5XD Grays, England, United Kingdom

TOTAL AREA: 2273.96 sq ft • LIVING AREA: 1930.06 sq ft • FLOORS: 2 • ROOMS: 19

Kempsters
ESTATE AGENTS

▼ Photos/Bedroom 5



Kempsters

ESTATE AGENTS

36 Bradleigh Avenue

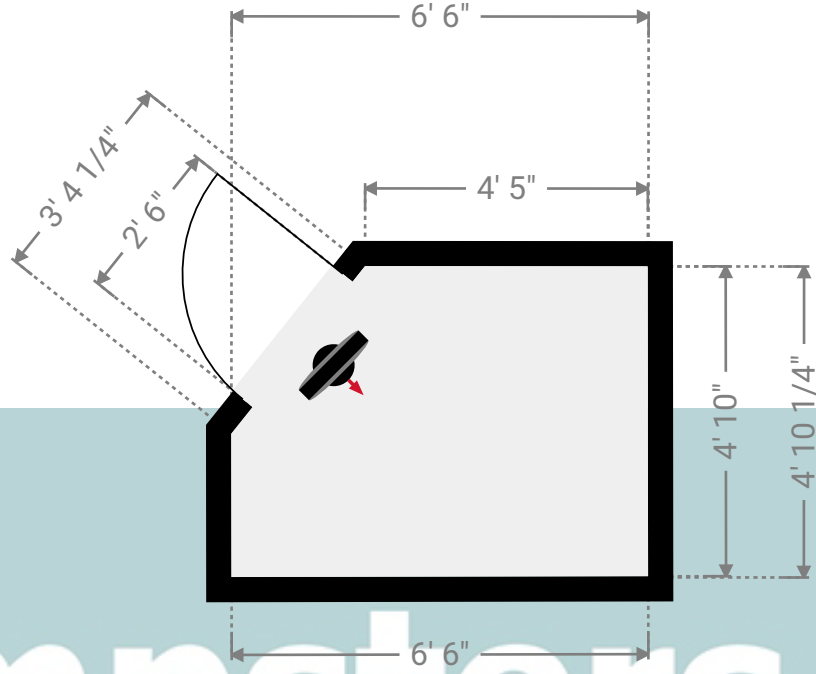
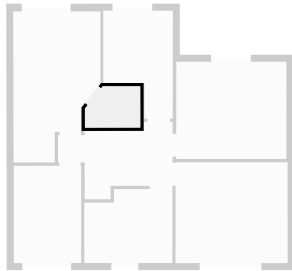
36 Bradleigh Ave, RM17 5XD Grays, England, United Kingdom

TOTAL AREA: 2273.96 sq ft • LIVING AREA: 1930.06 sq ft • FLOORS: 2 • ROOMS: 19



▼ En Suite 1st Floor

WIDTH: 6' 6" • LENGTH: 4' 10 1/4"
AREA: 28.74 sq ft • PERIMETER: 21' 4"



Kempsters

ESTATE AGENTS

▼ En Suite/1st Floor

Photo
1 Photo (see photos page)

36 Bradleigh Avenue

36 Bradleigh Ave, RM17 5XD Grays, England, United Kingdom

TOTAL AREA: 2273.96 sq ft • LIVING AREA: 1930.06 sq ft • FLOORS: 2 • ROOMS: 19

Kempsters
ESTATE AGENTS

▼ Photos/En Suite



Kempsters

ESTATE AGENTS

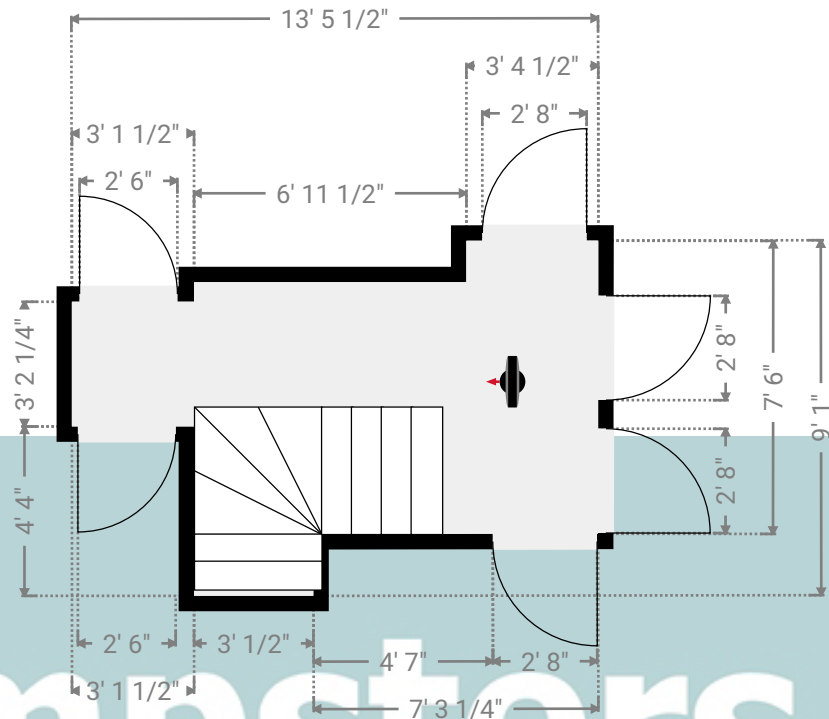
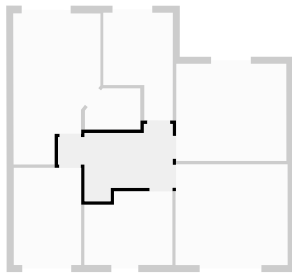
36 Bradleigh Avenue

36 Bradleigh Ave, RM17 5XD Grays, England, United Kingdom
TOTAL AREA: 2273.96 sq ft • LIVING AREA: 1930.06 sq ft • FLOORS: 2 • ROOMS: 19



▼ Landing 1st Floor

WIDTH: 13' 5 1/2" • LENGTH: 9' 1"
AREA: 84.85 sq ft • PERIMETER: 45' 3/4"



▼ Landing/1st Floor

Photos
2 Photos (see photos page)



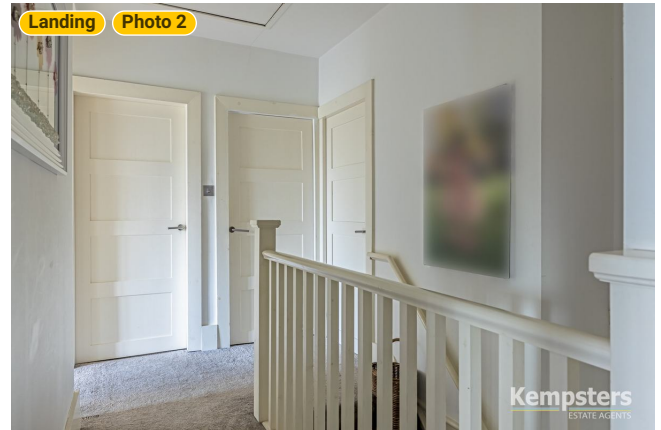
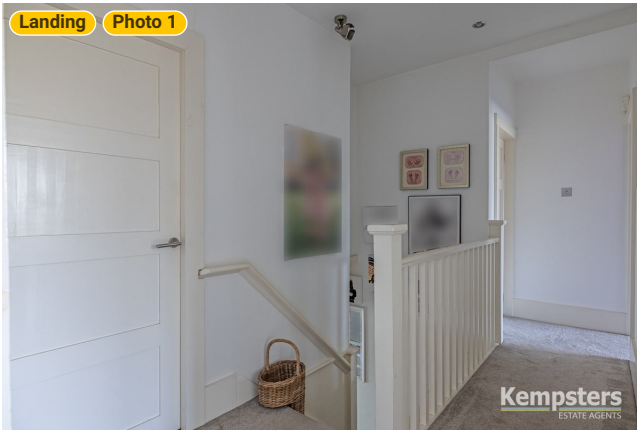
36 Bradleigh Avenue

36 Bradleigh Ave, RM17 5XD Grays, England, United Kingdom

TOTAL AREA: 2273.96 sq ft • LIVING AREA: 1930.06 sq ft • FLOORS: 2 • ROOMS: 19

Kempsters
ESTATE AGENTS

▼ Photos/Landing



Kempsters
ESTATE AGENTS