

20 Bankfoot

SUBMITTED BY

Ian
ianhk@icloud.com

CREATED ON

2024-02-14

LOCATION

20, Bankfoot
RM17 5JA Grays
Essex
United Kingdom



Total area
1678.68 sq ft

Floors
2

Rooms
21

Bathrooms
3

Kempsters

ESTATE AGENTS

20 Bankfoot

20, Bankfoot, RM17 5JA Grays, Essex, United Kingdom
TOTAL AREA: 1678.68 sq ft • LIVING AREA: 1526.91 sq ft • FLOORS: 2 • ROOMS: 21



▼ Ground Floor

TOTAL AREA: 990.14 sq ft • LIVING AREA: 838.37 sq ft • ROOMS: 9



Kempsters Estate Agents take no responsibility for any error, omission, misstatement or use of data shown. This plan is for illustrative purposes only and whilst every attempt has been made to ensure the accuracy of the floorplan shown, all measurements, positioning, fixtures, fittings and any other data shown are an approximate interpretation for illustrative purposes only. These plans are the property of Kempsters Estate Agents Ltd and must not be reproduced in any form without our permission.



1:75

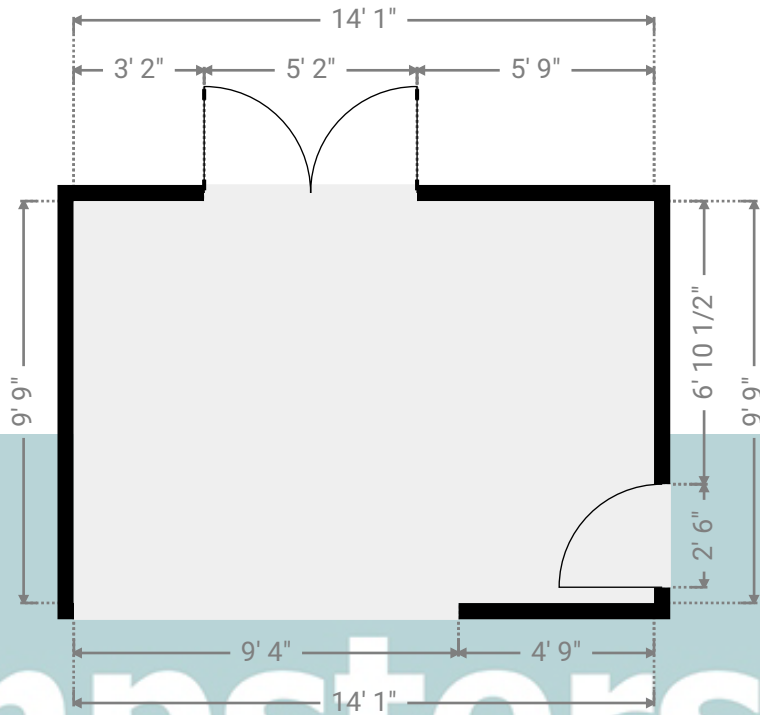
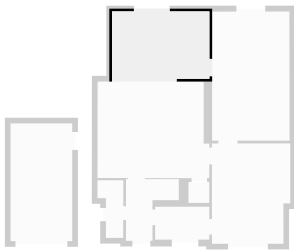
20 Bankfoot

20, Bankfoot, RM17 5JA Grays, Essex, United Kingdom
TOTAL AREA: 1678.68 sq ft • LIVING AREA: 1526.91 sq ft • FLOORS: 2 • ROOMS: 21



▼ Dining Room Ground Floor

WIDTH: 14' 1" • LENGTH: 9' 9"
AREA: 137.33 sq ft • PERIMETER: 47' 8"



▼ Dining Room/Ground Floor

Photos
2 Photos (see photos page)

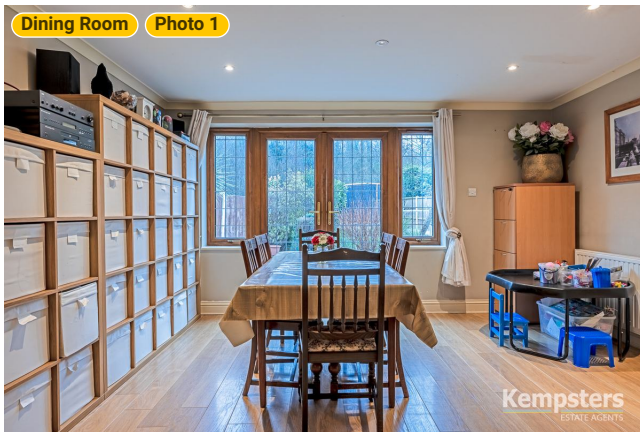


20 Bankfoot

20, Bankfoot, RM17 5JA Grays, Essex, United Kingdom

TOTAL AREA: 1678.68 sq ft • LIVING AREA: 1526.91 sq ft • FLOORS: 2 • ROOMS: 21

▼ Photos/Dining Room



Kempsters
ESTATE AGENTS

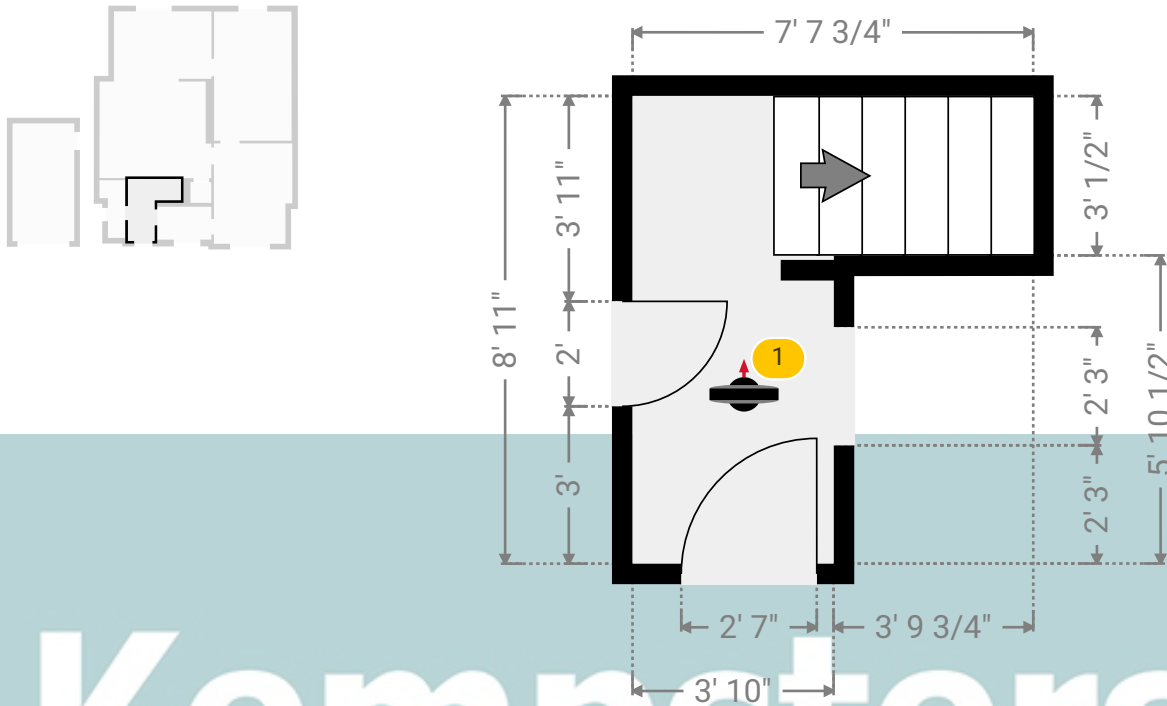
20 Bankfoot

20, Bankfoot, RM17 5JA Grays, Essex, United Kingdom
TOTAL AREA: 1678.68 sq ft • LIVING AREA: 1526.91 sq ft • FLOORS: 2 • ROOMS: 21

Kempsters
ESTATE AGENTS

▼ Hall Ground Floor

WIDTH: 7' 7 3/4" • LENGTH: 8' 11"
AREA: 45.74 sq ft • PERIMETER: 33' 1 1/4"



▼ Hall/Ground Floor

Photos

3 Photos (see photos page)

1 360 PANORAMA

Photo

1 Photo (see photos page)

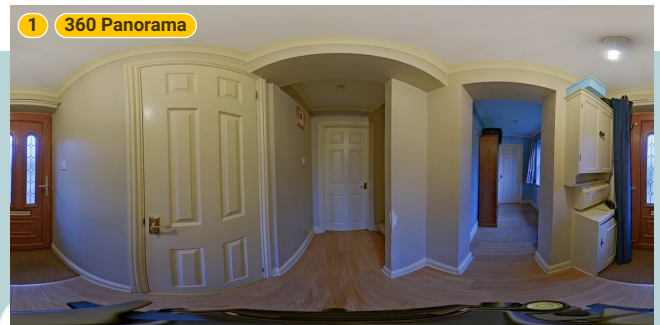
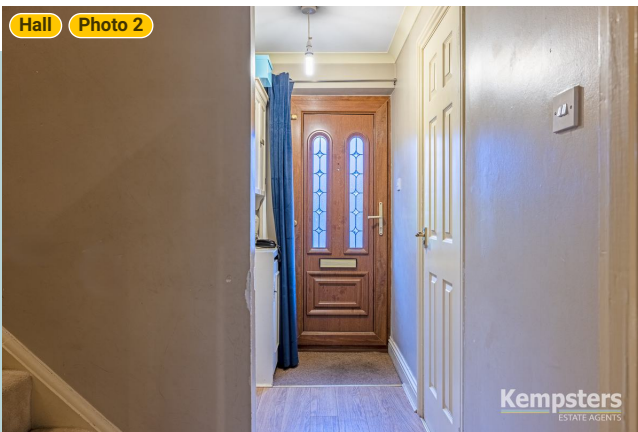
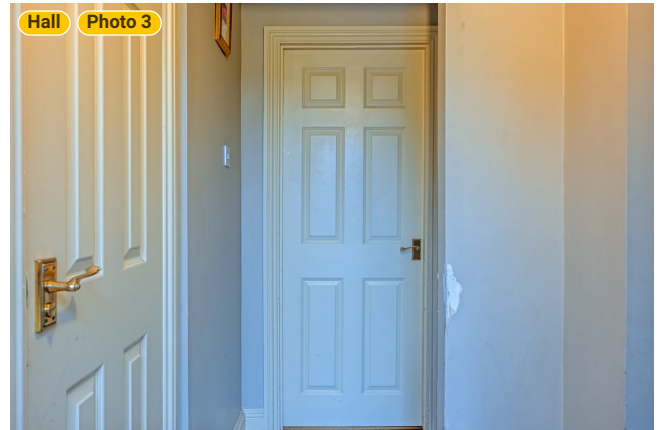
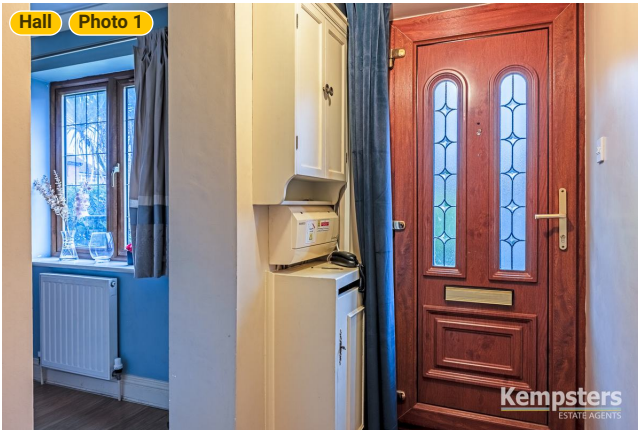


20 Bankfoot

20, Bankfoot, RM17 5JA Grays, Essex, United Kingdom

TOTAL AREA: 1678.68 sq ft • LIVING AREA: 1526.91 sq ft • FLOORS: 2 • ROOMS: 21

▼ Photos/Hall



Kempsters
ESTATE AGENTS

20 Bankfoot

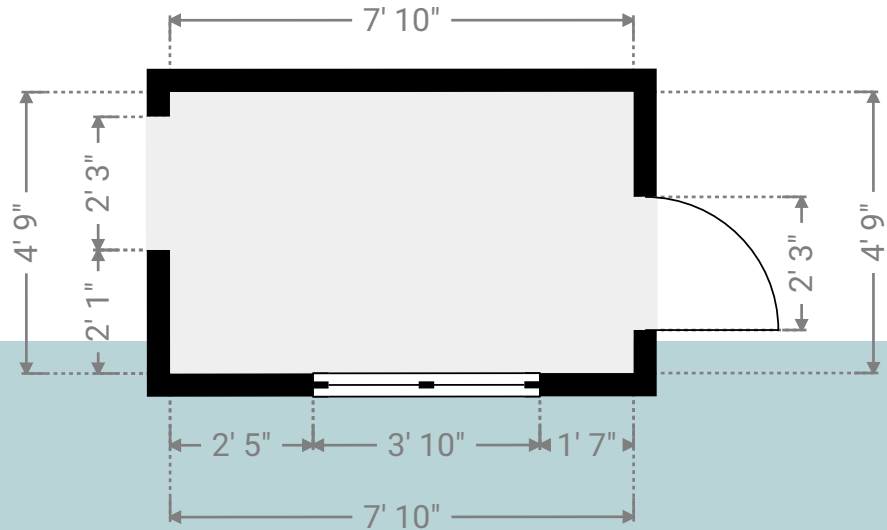
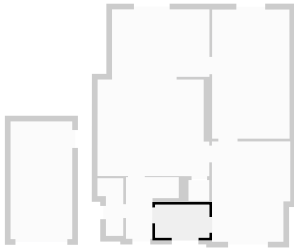
20, Bankfoot, RM17 5JA Grays, Essex, United Kingdom

TOTAL AREA: 1678.68 sq ft • LIVING AREA: 1526.91 sq ft • FLOORS: 2 • ROOMS: 21

Kempsters
ESTATE AGENTS

▼ Inner Hall Ground Floor

WIDTH: 7' 10" • LENGTH: 4' 9"
AREA: 37.23 sq ft • PERIMETER: 25' 2"



Kempsters

ESTATE AGENTS

▼ Inner Hall/Ground Floor

Photo

1 Photo (see photos page)

20 Bankfoot

20, Bankfoot, RM17 5JA Grays, Essex, United Kingdom

TOTAL AREA: 1678.68 sq ft • LIVING AREA: 1526.91 sq ft • FLOORS: 2 • ROOMS: 21

Kempsters
ESTATE AGENTS

▼ Photos/Inner Hall



Kempsters
ESTATE AGENTS

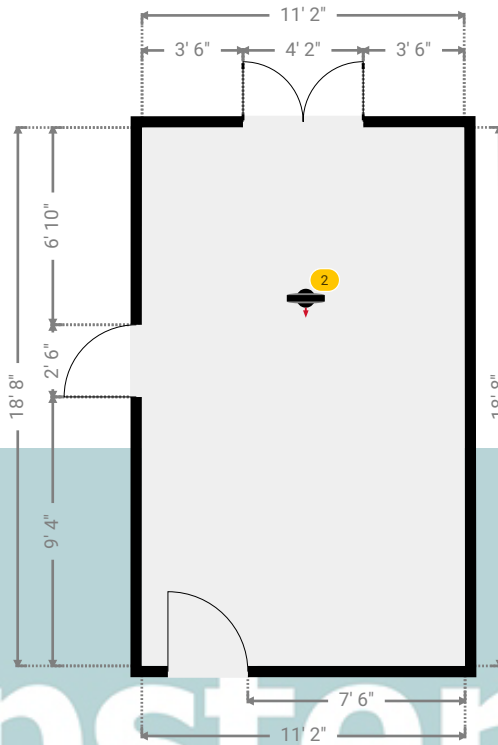
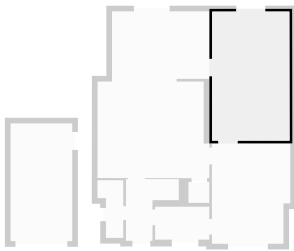
20 Bankfoot

20, Bankfoot, RM17 5JA Grays, Essex, United Kingdom
TOTAL AREA: 1678.68 sq ft • LIVING AREA: 1526.91 sq ft • FLOORS: 2 • ROOMS: 21



▼ Kitchen Ground Floor

WIDTH: 11' 2 1/2" • LENGTH: 18' 8"
AREA: 208.77 sq ft • PERIMETER: 59' 8 1/2"



▼ Kitchen/Ground Floor

Photos
5 Photos (see photos page)

2 360 PANORAMA

Photo
1 Photo (see photos page)



20 Bankfoot

20, Bankfoot, RM17 5JA Grays, Essex, United Kingdom
TOTAL AREA: 1678.68 sq ft • LIVING AREA: 1526.91 sq ft • FLOORS: 2 • ROOMS: 21



▼ Photos/Kitchen



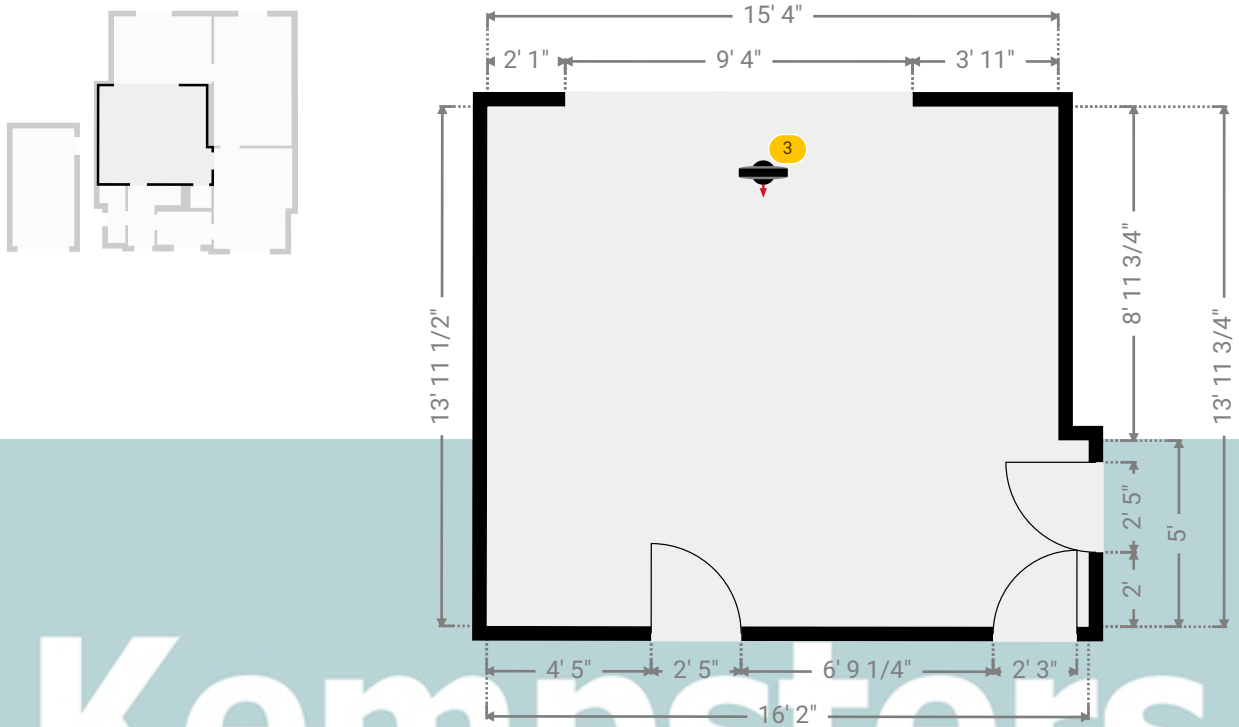
20 Bankfoot

20, Bankfoot, RM17 5JA Grays, Essex, United Kingdom
TOTAL AREA: 1678.68 sq ft • LIVING AREA: 1526.91 sq ft • FLOORS: 2 • ROOMS: 21



▼ Lounge Ground Floor

WIDTH: 16' 2" • LENGTH: 13' 11 3/4"
AREA: 218.28 sq ft • PERIMETER: 60' 2 3/4"



▼ Lounge/Ground Floor

Photos
4 Photos (see photos page)

3 360 PANORAMA

Photo
1 Photo (see photos page)

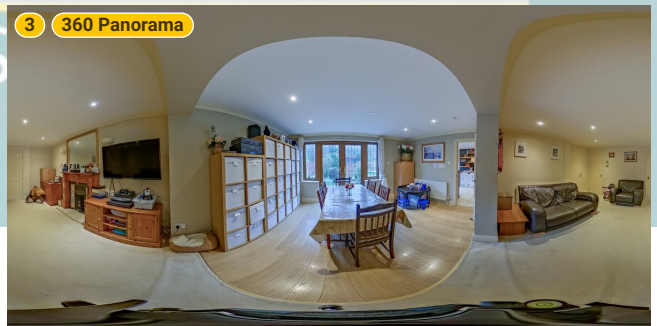
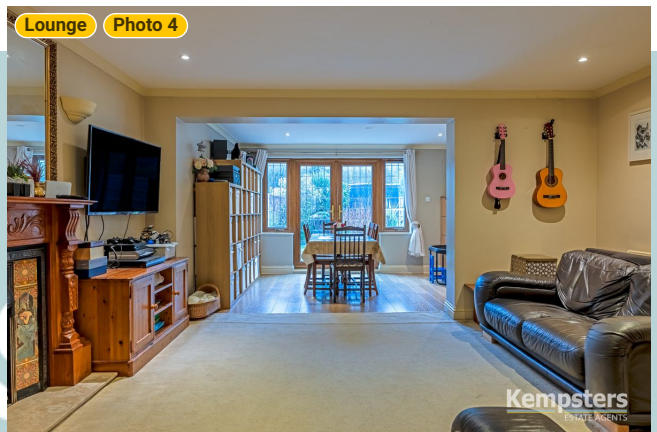


20 Bankfoot

20, Bankfoot, RM17 5JA Grays, Essex, United Kingdom
TOTAL AREA: 1678.68 sq ft • LIVING AREA: 1526.91 sq ft • FLOORS: 2 • ROOMS: 21



▼ Photos/Lounge



20 Bankfoot

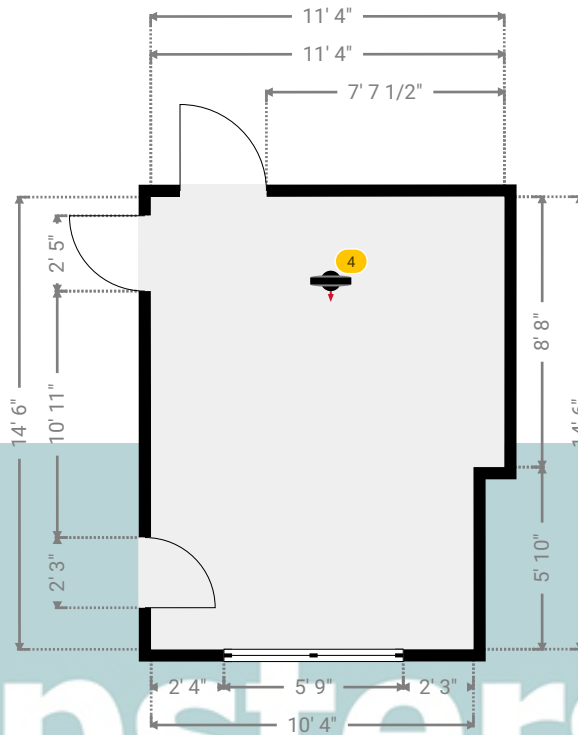
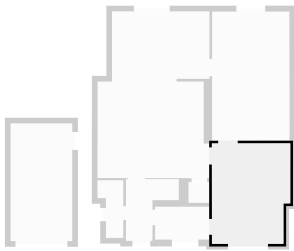
20, Bankfoot, RM17 5JA Grays, Essex, United Kingdom

TOTAL AREA: 1678.68 sq ft • LIVING AREA: 1526.91 sq ft • FLOORS: 2 • ROOMS: 21

Kempsters
ESTATE AGENTS

▼ Sitting Room/Bed 5 Ground Floor

WIDTH: 11' 4" • LENGTH: 14' 6"
AREA: 158.50 sq ft • PERIMETER: 51' 8"



▼ Sitting Room/Bed 5/Ground Floor

Photos

2 Photos (see photos page)

4 360 PANORAMA

Photo

1 Photo (see photos page)

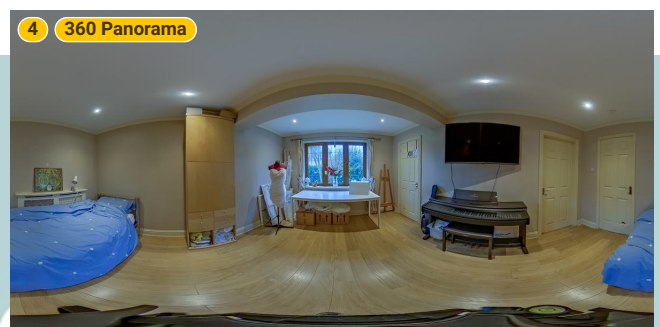


20 Bankfoot

20, Bankfoot, RM17 5JA Grays, Essex, United Kingdom

TOTAL AREA: 1678.68 sq ft • LIVING AREA: 1526.91 sq ft • FLOORS: 2 • ROOMS: 21

▼ Photos/Sitting Room/Bed 5



Kempsters
ESTATE AGENTS

20 Bankfoot

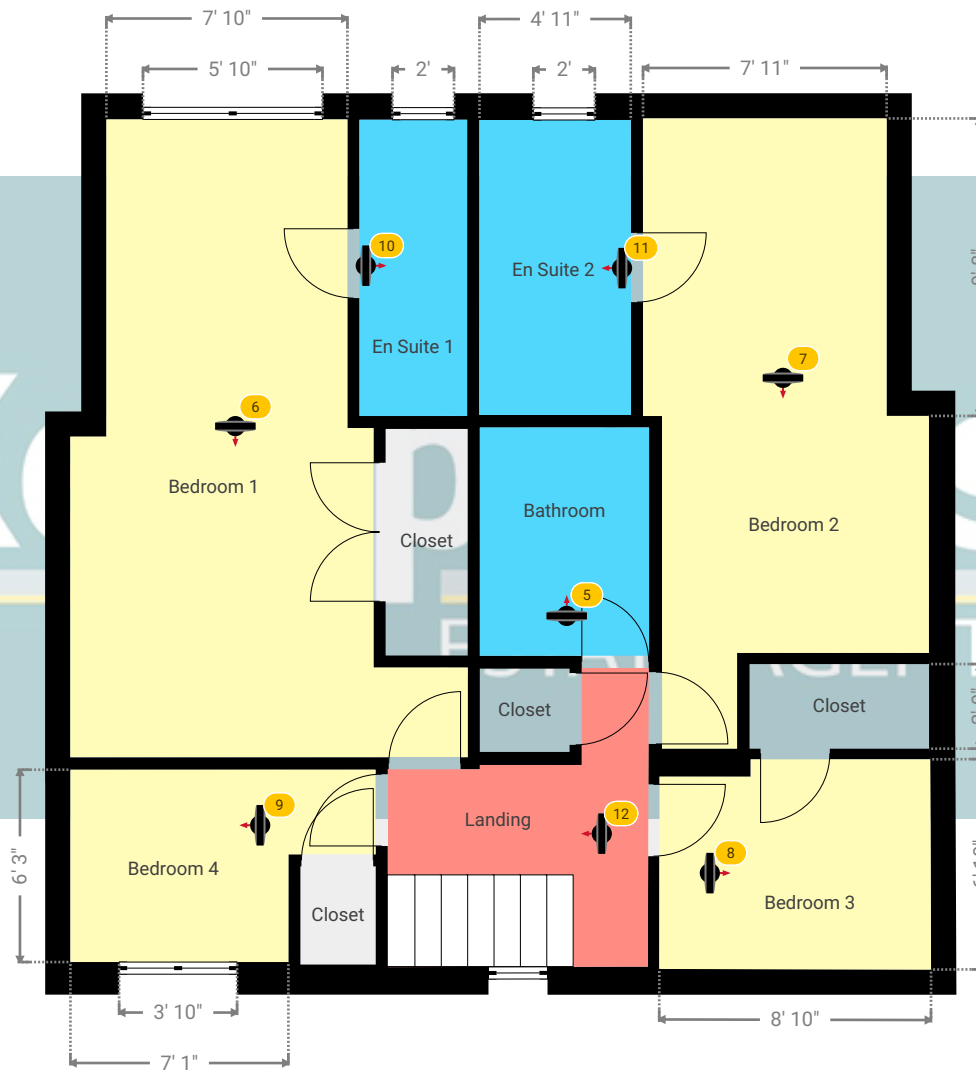
20, Bankfoot, RM17 5JA Grays, Essex, United Kingdom

TOTAL AREA: 1678.68 sq ft • LIVING AREA: 1526.91 sq ft • FLOORS: 2 • ROOMS: 21

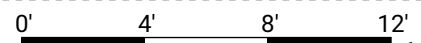


▼ 1st Floor

TOTAL AREA: 688.54 sq ft • LIVING AREA: 688.54 sq ft • ROOMS: 12



Kempsters Estate Agents take no responsibility for any error, omission, misstatement or use of data shown. This plan is for illustrative purposes only and whilst every attempt has been made to ensure the accuracy of the floorplan shown, all measurements, positioning, fixtures, fittings and any other data shown are an approximate interpretation for illustrative purposes only. These plans are the property of Kempsters Estate Agents Ltd and must not be reproduced in any form without our permission.

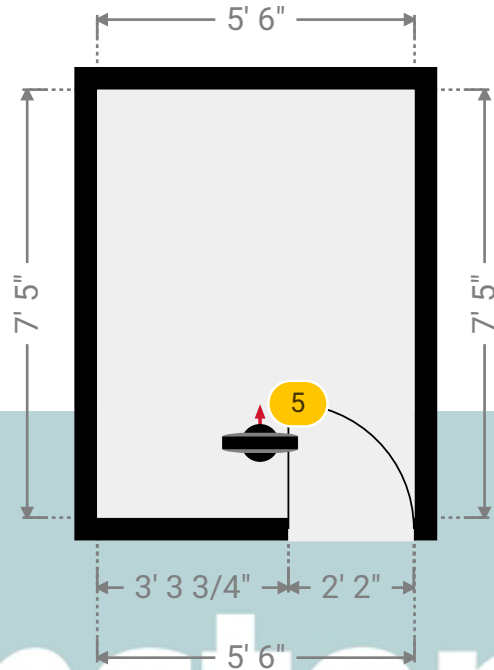
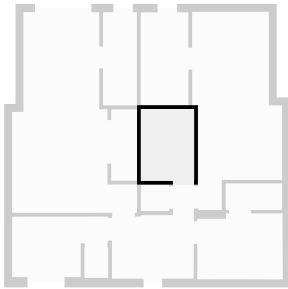


20 Bankfoot

20, Bankfoot, RM17 5JA Grays, Essex, United Kingdom
TOTAL AREA: 1678.68 sq ft • LIVING AREA: 1526.91 sq ft • FLOORS: 2 • ROOMS: 21

▼ Bathroom 1st Floor

WIDTH: 5' 6" • LENGTH: 7' 5"
AREA: 40.79 sq ft • PERIMETER: 25' 10"



▼ Bathroom/1st Floor

Photos

2 Photos (see photos page)

5 360 PANORAMA

Photo

1 Photo (see photos page)



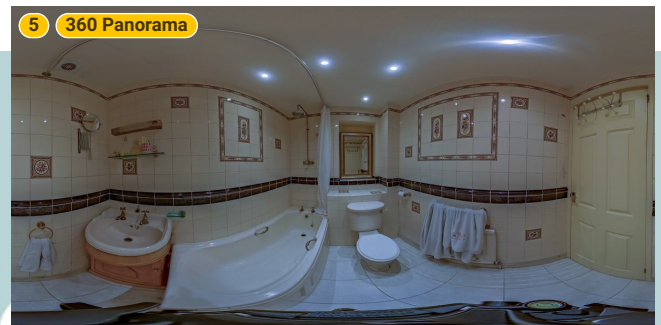
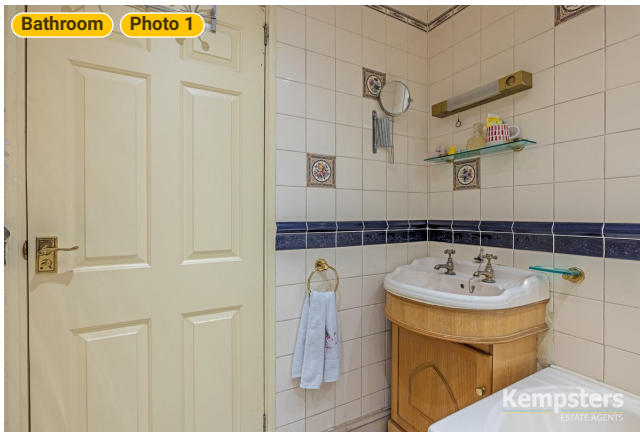
20 Bankfoot

20, Bankfoot, RM17 5JA Grays, Essex, United Kingdom

TOTAL AREA: 1678.68 sq ft • LIVING AREA: 1526.91 sq ft • FLOORS: 2 • ROOMS: 21

Kempsters
ESTATE AGENTS

▼ Photos/Bathroom



Kempsters
ESTATE AGENTS

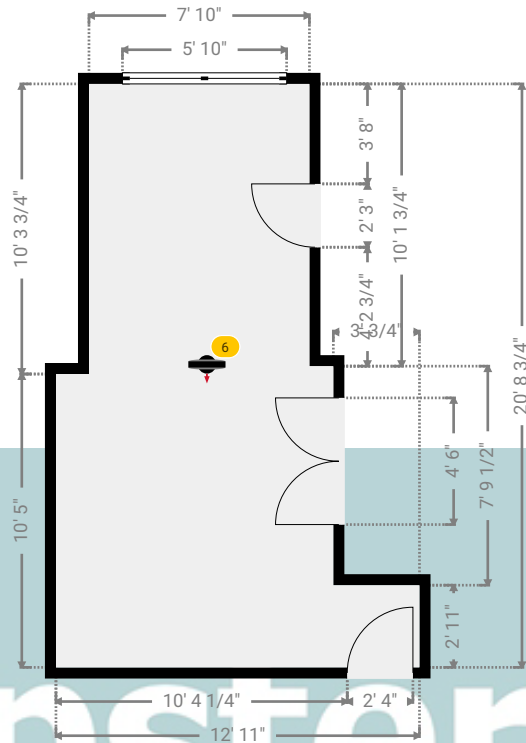
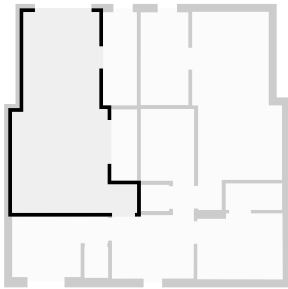
20 Bankfoot

20, Bankfoot, RM17 5JA Grays, Essex, United Kingdom
TOTAL AREA: 1678.68 sq ft • LIVING AREA: 1526.91 sq ft • FLOORS: 2 • ROOMS: 21



▼ Bedroom 1 1st Floor

WIDTH: 12' 11" • LENGTH: 20' 8 3/4"
AREA: 192.63 sq ft • PERIMETER: 67' 3 1/2"

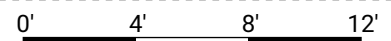


▼ Bedroom 1/1st Floor

Photos
3 Photos (see photos page)

6 360 PANORAMA

Photo
1 Photo (see photos page)



20 Bankfoot

20, Bankfoot, RM17 5JA Grays, Essex, United Kingdom
TOTAL AREA: 1678.68 sq ft • LIVING AREA: 1526.91 sq ft • FLOORS: 2 • ROOMS: 21



▼ Photos/Bedroom 1



KEMPSTERS
ESTATE AGENTS

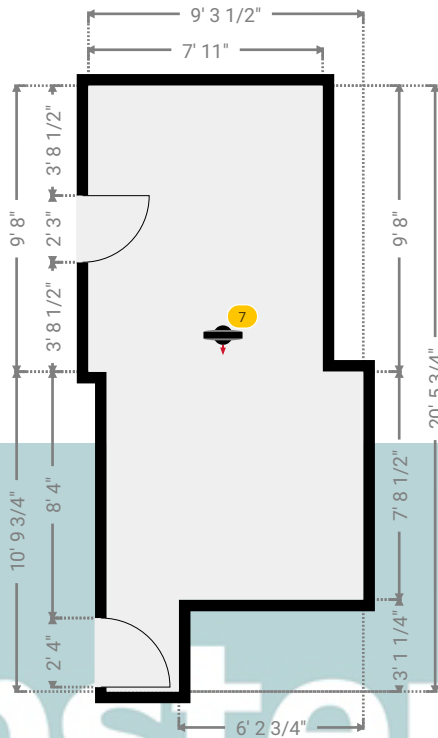
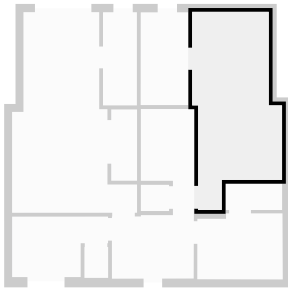
20 Bankfoot

20, Bankfoot, RM17 5JA Grays, Essex, United Kingdom
TOTAL AREA: 1678.68 sq ft • LIVING AREA: 1526.91 sq ft • FLOORS: 2 • ROOMS: 21



▼ Bedroom 2 1st Floor

WIDTH: 9' 3 1/2" • LENGTH: 20' 5 3/4"
AREA: 150.87 sq ft • PERIMETER: 59' 6 1/4"



▼ Bedroom 2/1st Floor

Photos
2 Photos (see photos page)

7 360 PANORAMA

Photo
1 Photo (see photos page)



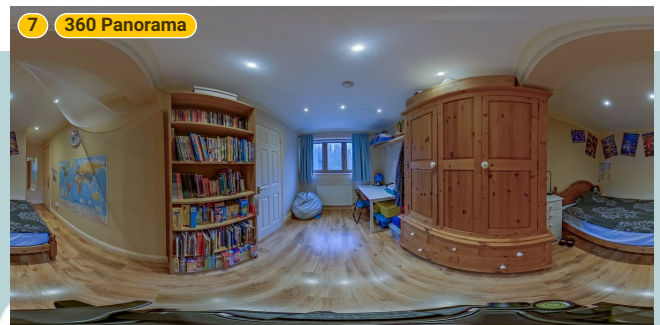
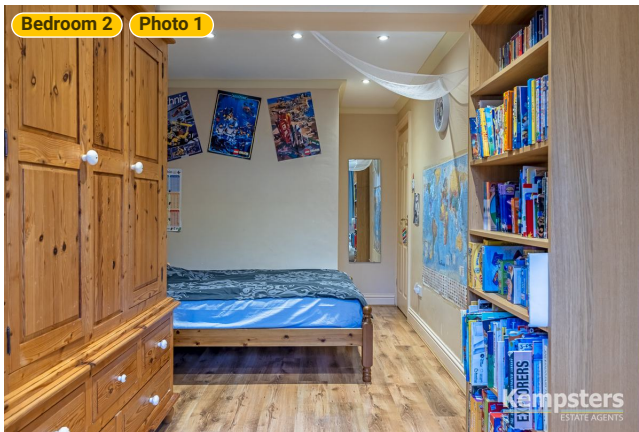
20 Bankfoot

20, Bankfoot, RM17 5JA Grays, Essex, United Kingdom

TOTAL AREA: 1678.68 sq ft • LIVING AREA: 1526.91 sq ft • FLOORS: 2 • ROOMS: 21

Kempsters
ESTATE AGENTS

▼ Photos/Bedroom 2



Kempsters
ESTATE AGENTS

20 Bankfoot

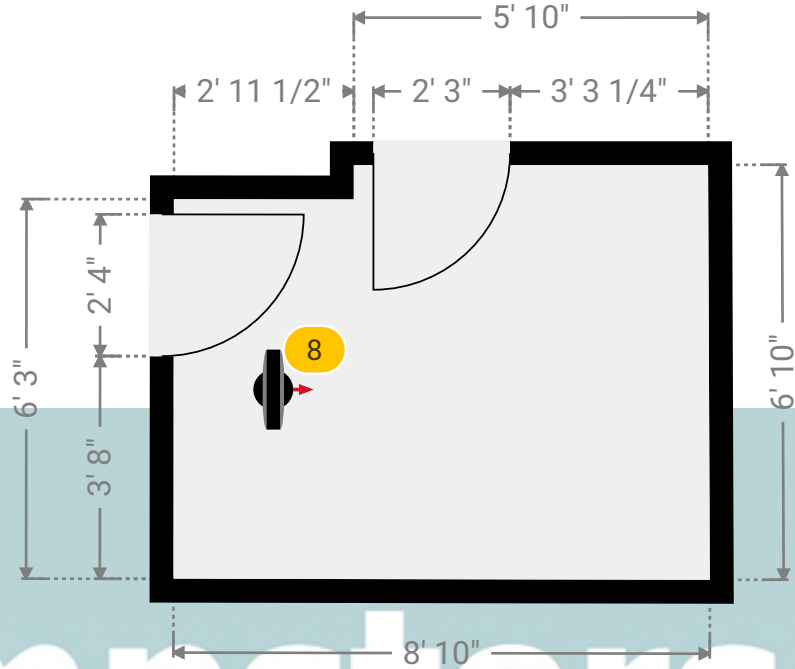
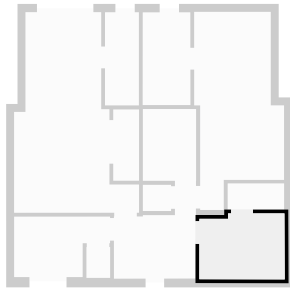
20, Bankfoot, RM17 5JA Grays, Essex, United Kingdom

TOTAL AREA: 1678.68 sq ft • LIVING AREA: 1526.91 sq ft • FLOORS: 2 • ROOMS: 21

Kempsters
ESTATE AGENTS

▼ Bedroom 3 1st Floor

WIDTH: 8' 10" • LENGTH: 6' 10"
AREA: 58.46 sq ft • PERIMETER: 31' 3 1/4"



▼ Bedroom 3/1st Floor

Photo

1 Photo (see photos page)

8 360 PANORAMA

Photo

1 Photo (see photos page)



20 Bankfoot

20, Bankfoot, RM17 5JA Grays, Essex, United Kingdom

TOTAL AREA: 1678.68 sq ft • LIVING AREA: 1526.91 sq ft • FLOORS: 2 • ROOMS: 21

Kempsters
ESTATE AGENTS

▼ Photos/Bedroom 3



Kempsters

ESTATE AGENTS

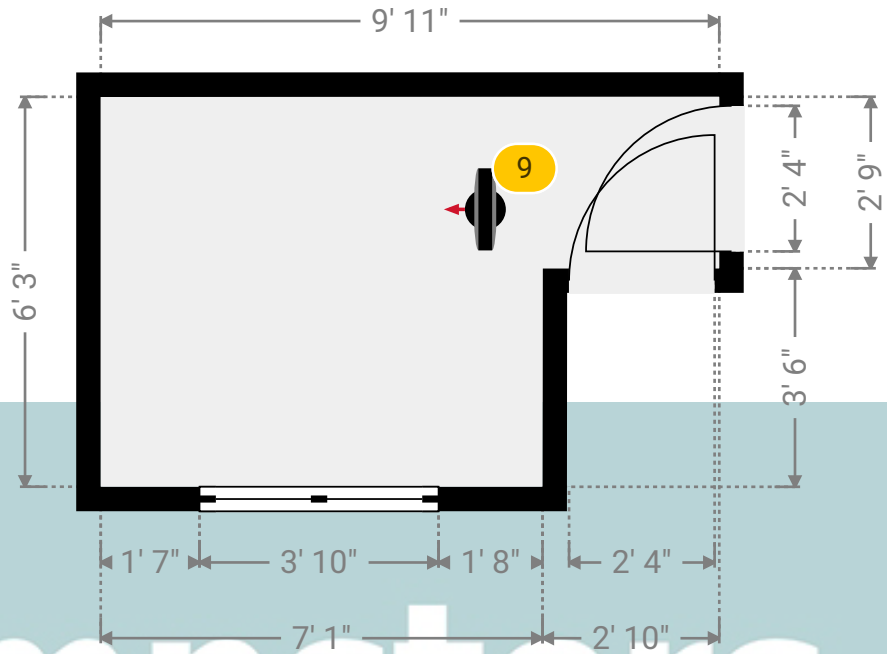
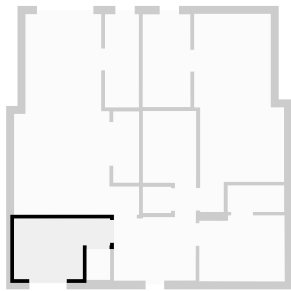
20 Bankfoot

20, Bankfoot, RM17 5JA Grays, Essex, United Kingdom
TOTAL AREA: 1678.68 sq ft • LIVING AREA: 1526.91 sq ft • FLOORS: 2 • ROOMS: 21



▼ Bedroom 4 1st Floor

WIDTH: 9' 11" • LENGTH: 6' 3"
AREA: 52.07 sq ft • PERIMETER: 32' 4"



Kempsters

ESTATE AGENTS

▼ Bedroom 4/1st Floor

Photo
1 Photo (see photos page)

9 360 PANORAMA

Photo
1 Photo (see photos page)



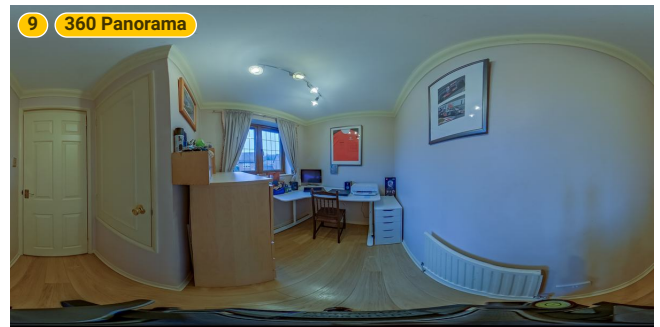
20 Bankfoot

20, Bankfoot, RM17 5JA Grays, Essex, United Kingdom

TOTAL AREA: 1678.68 sq ft • LIVING AREA: 1526.91 sq ft • FLOORS: 2 • ROOMS: 21

Kempsters
ESTATE AGENTS

▼ Photos/Bedroom 4



Kempsters

ESTATE AGENTS

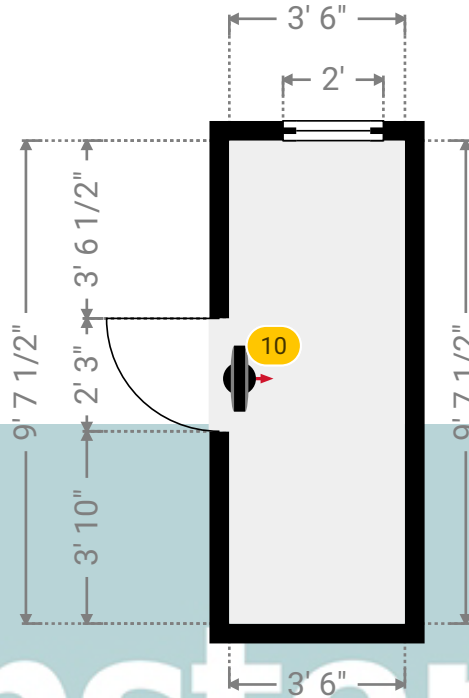
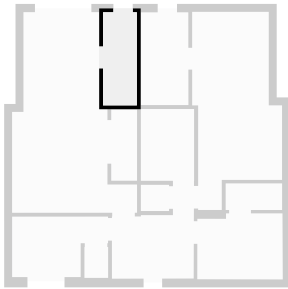
20 Bankfoot

20, Bankfoot, RM17 5JA Grays, Essex, United Kingdom
TOTAL AREA: 1678.68 sq ft • LIVING AREA: 1526.91 sq ft • FLOORS: 2 • ROOMS: 21

Kempsters
ESTATE AGENTS

▼ En Suite 1 1st Floor

WIDTH: 3' 6" • LENGTH: 9' 7 1/2"
AREA: 33.69 sq ft • PERIMETER: 26' 3"



Kempsters

ESTATE AGENTS

▼ En Suite 1/1st Floor

Photo

1 Photo (see photos page)

10 360 PANORAMA

Photo

1 Photo (see photos page)



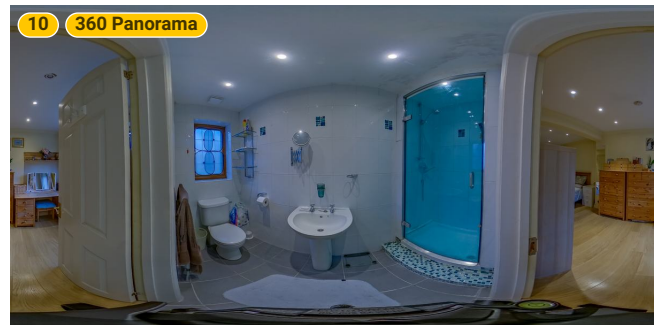
20 Bankfoot

20, Bankfoot, RM17 5JA Grays, Essex, United Kingdom

TOTAL AREA: 1678.68 sq ft • LIVING AREA: 1526.91 sq ft • FLOORS: 2 • ROOMS: 21

Kempsters
ESTATE AGENTS

▼ Photos/En Suite 1



Kempsters

ESTATE AGENTS

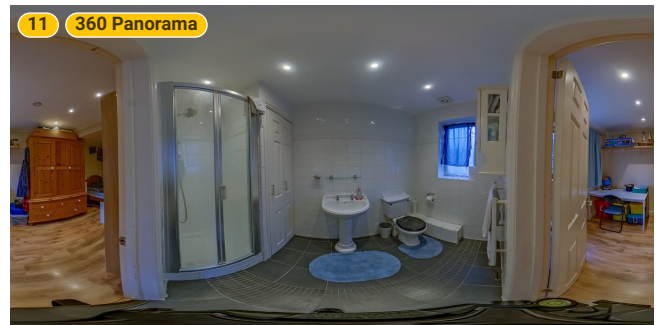
20 Bankfoot

20, Bankfoot, RM17 5JA Grays, Essex, United Kingdom

TOTAL AREA: 1678.68 sq ft • LIVING AREA: 1526.91 sq ft • FLOORS: 2 • ROOMS: 21

Kempsters
ESTATE AGENTS

▼ Photos/En Suite 2



Kempsters

ESTATE AGENTS

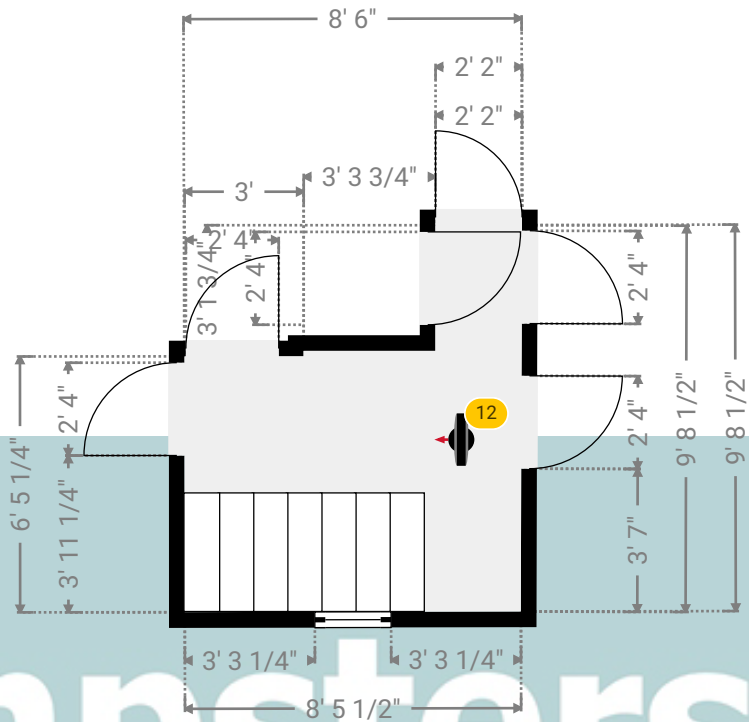
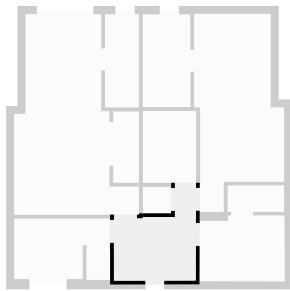
20 Bankfoot

20, Bankfoot, RM17 5JA Grays, Essex, United Kingdom
 TOTAL AREA: 1678.68 sq ft • LIVING AREA: 1526.91 sq ft • FLOORS: 2 • ROOMS: 21



▼ Landing 1st Floor

WIDTH: 8' 6" • LENGTH: 9' 8 1/2"
 AREA: 61.94 sq ft • PERIMETER: 36' 4 1/4"



▼ Landing/1st Floor

Photos
 2 Photos (see photos page)

12 360 PANORAMA

Photo
 1 Photo (see photos page)



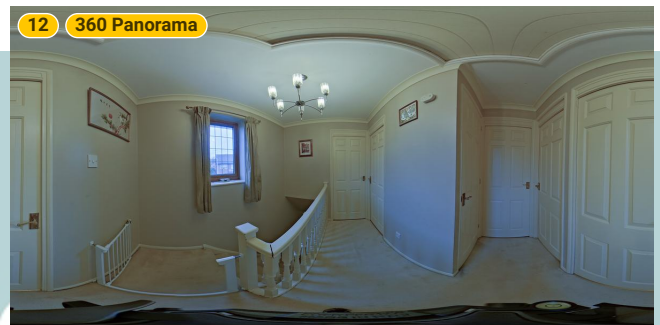
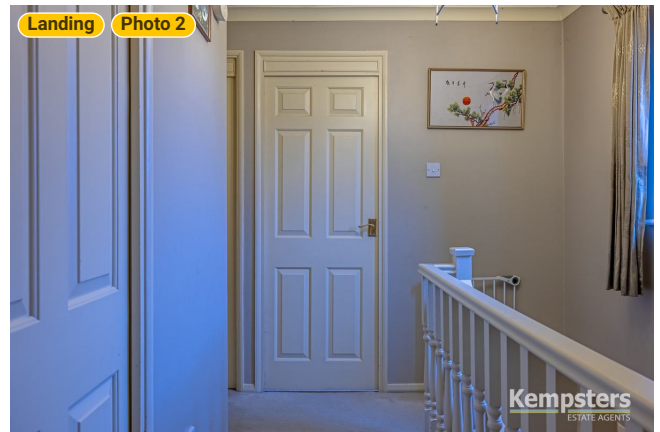
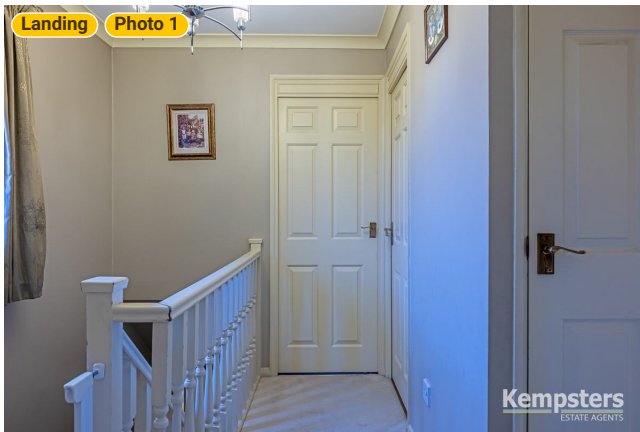
20 Bankfoot

20, Bankfoot, RM17 5JA Grays, Essex, United Kingdom

TOTAL AREA: 1678.68 sq ft • LIVING AREA: 1526.91 sq ft • FLOORS: 2 • ROOMS: 21

Kempsters
ESTATE AGENTS

▼ Photos/Landing



Kempsters
ESTATE AGENTS