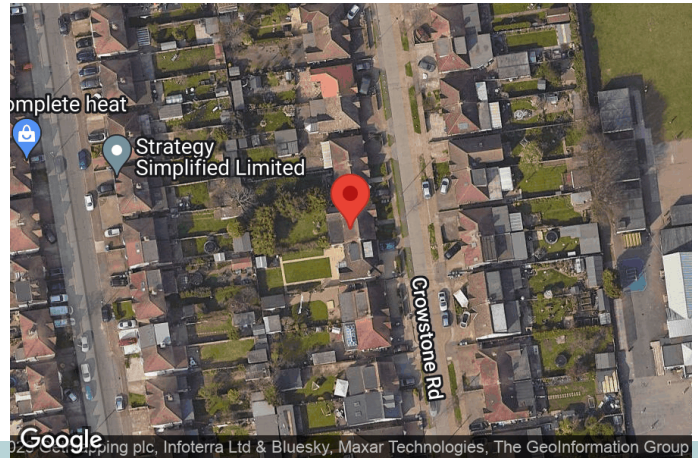


39 Crowstone Road

SUBMITTED BY
Ian
ianhk@icloud.com

CREATED ON
2023-10-24

LOCATION
39 Crowstone Road
RM16 2SR Grays
England
United Kingdom



Total area
875.87 sq ft

Floors
1

Rooms
8

Bathroom
1

Photos
3 Photos (see photos page)

Kempsters

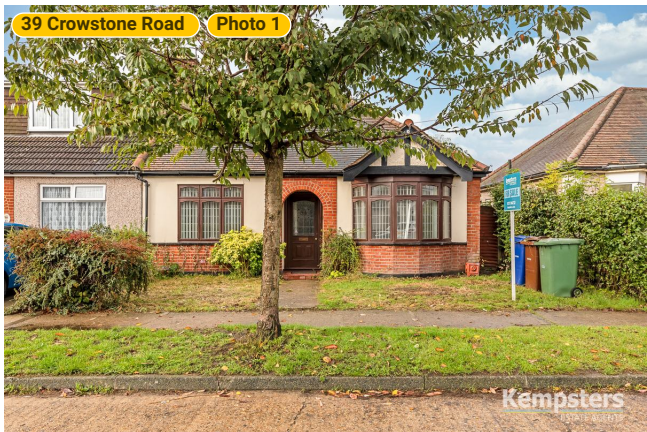
ESTATE AGENTS

39 Crowstone Road

39 Crowstone Road, RM16 2SR Grays, England, United Kingdom
TOTAL AREA: 875.87 sq ft • LIVING AREA: 875.87 sq ft • FLOORS: 1 • ROOMS: 8



▼ Photos/39 Crowstone Road



mpsters
ESTATE AGENTS

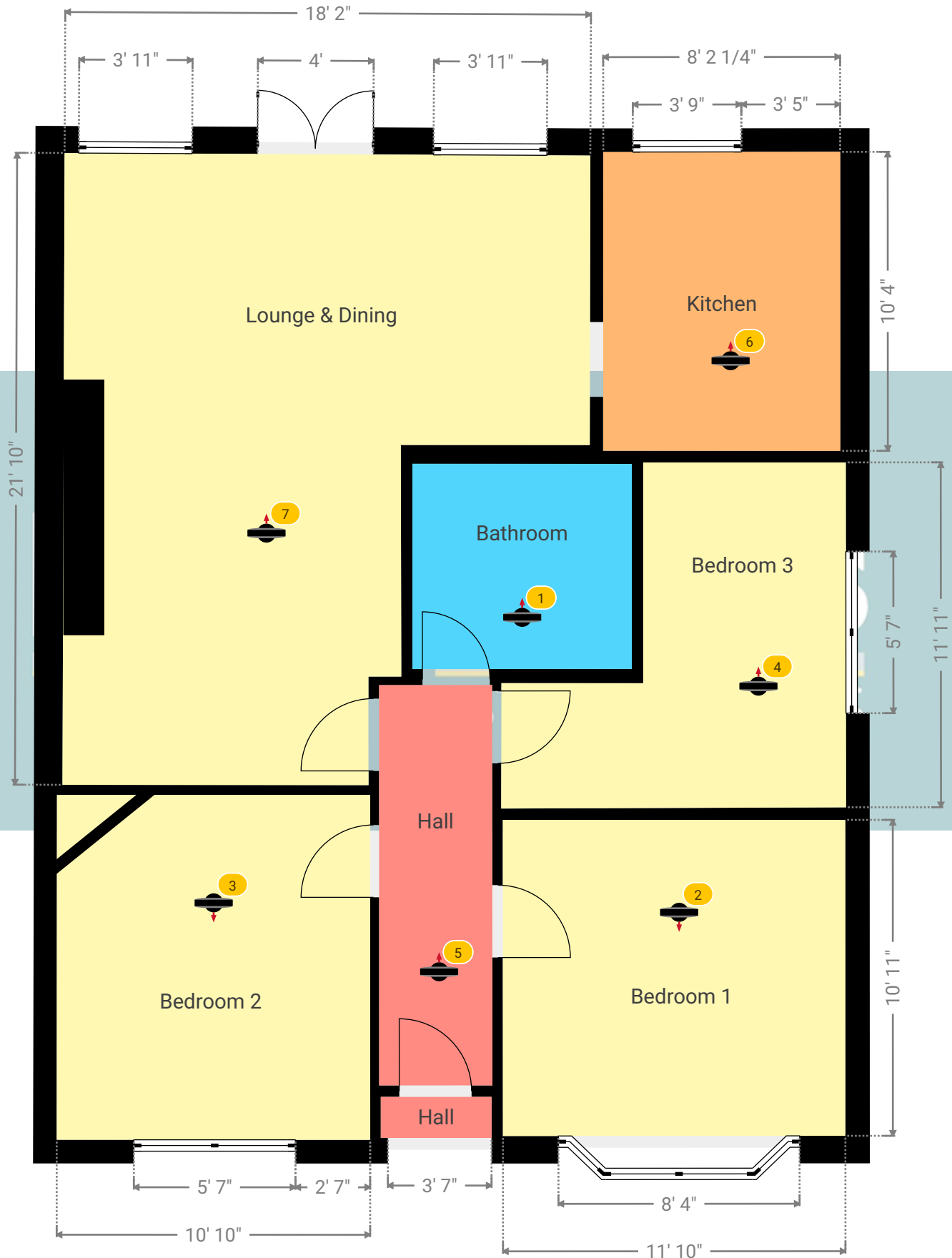
39 Crowstone Road

39 Crowstone Road, RM16 2SR Grays, England, United Kingdom
TOTAL AREA: 875.87 sq ft • LIVING AREA: 875.87 sq ft • FLOORS: 1 • ROOMS: 8

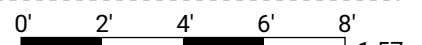


▼ Ground Floor

TOTAL AREA: 875.87 sq ft • LIVING AREA: 875.87 sq ft • ROOMS: 8



Kempsters Estate Agents take no responsibility for any error, omission, misstatement or use of data shown. This plan is for illustrative purposes only and whilst every attempt has been made to ensure the accuracy of the floorplan shown, all measurements, positioning, fixtures, fittings and any other data shown are an approximate interpretation for illustrative purposes only. These plans are the property of Kempsters Estate Agents Ltd and must not be reproduced in any form without our permission.



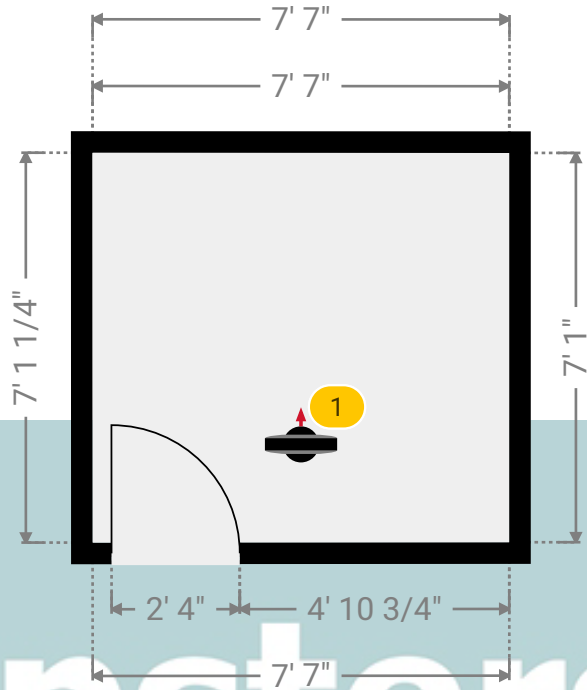
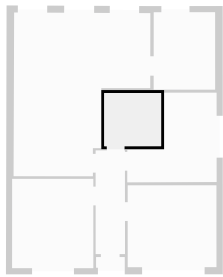
39 Crowstone Road

39 Crowstone Road, RM16 2SR Grays, England, United Kingdom
TOTAL AREA: 875.87 sq ft • LIVING AREA: 875.87 sq ft • FLOORS: 1 • ROOMS: 8



▼ Bathroom Ground Floor

WIDTH: 7' 7" • LENGTH: 7' 1 1/4"
AREA: 53.76 sq ft • PERIMETER: 29' 4 1/4"



Kempsters

ESTATE AGENTS

▼ Bathroom/Ground Floor

Photos
2 Photos (see photos page)

1 360 PANORAMA

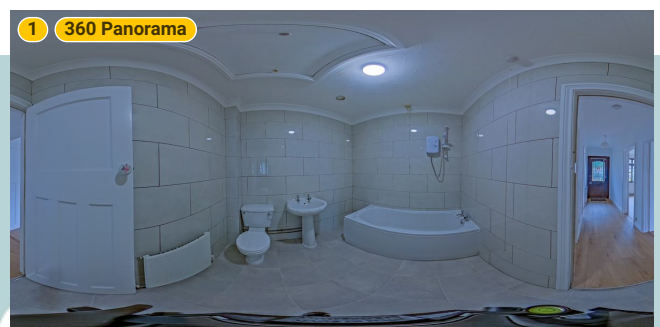
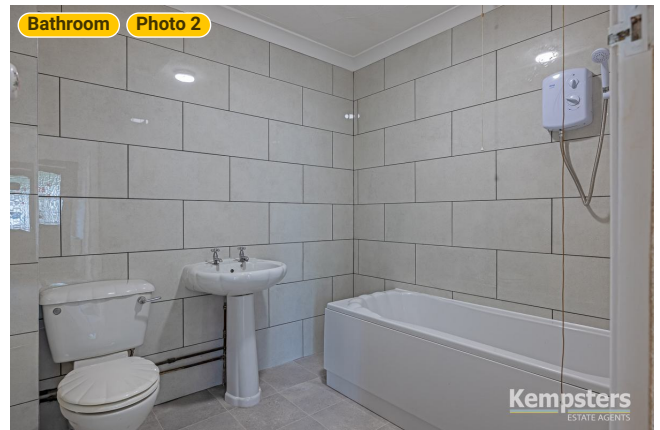
Photo
1 Photo (see photos page)



39 Crowstone Road

39 Crowstone Road, RM16 2SR Grays, England, United Kingdom
TOTAL AREA: 875.87 sq ft • LIVING AREA: 875.87 sq ft • FLOORS: 1 • ROOMS: 8

▼ Photos/Bathroom



Kempsters
ESTATE AGENTS

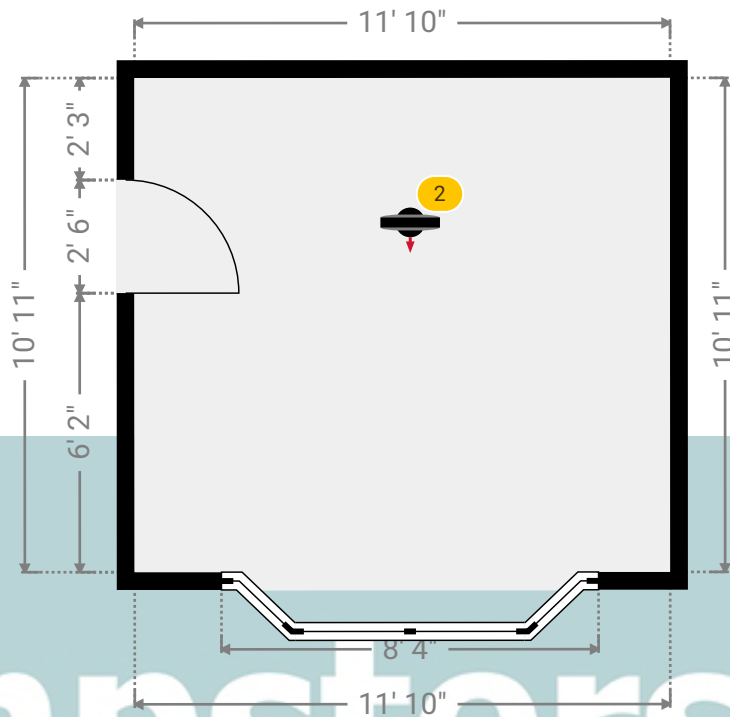
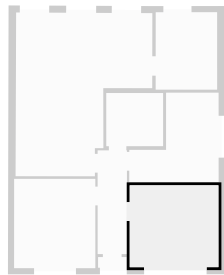
39 Crowstone Road

39 Crowstone Road, RM16 2SR Grays, England, United Kingdom
TOTAL AREA: 875.87 sq ft • LIVING AREA: 875.87 sq ft • FLOORS: 1 • ROOMS: 8



▼ Bedroom 1 Ground Floor

WIDTH: 11' 10" • LENGTH: 10' 11"
AREA: 129.21 sq ft • PERIMETER: 45' 6"



▼ Bedroom 1/Ground Floor

Photos
2 Photos (see photos page)

2 360 PANORAMA

Photo
1 Photo (see photos page)

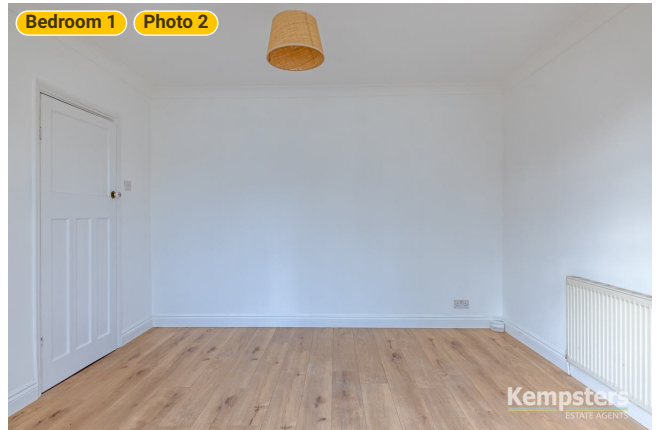
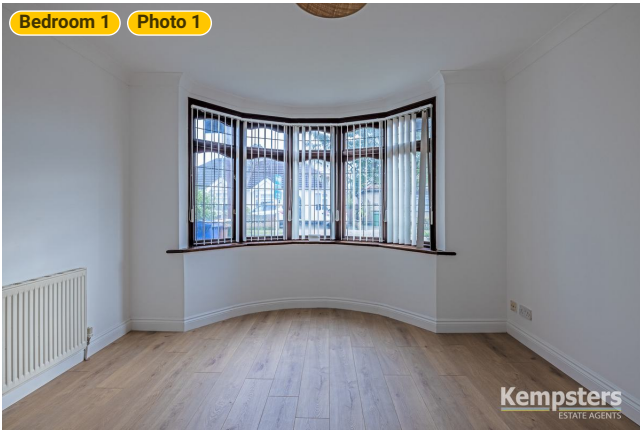


39 Crowstone Road

39 Crowstone Road, RM16 2SR Grays, England, United Kingdom
TOTAL AREA: 875.87 sq ft • LIVING AREA: 875.87 sq ft • FLOORS: 1 • ROOMS: 8



▼ Photos/Bedroom 1



Kempsters
ESTATE AGENTS

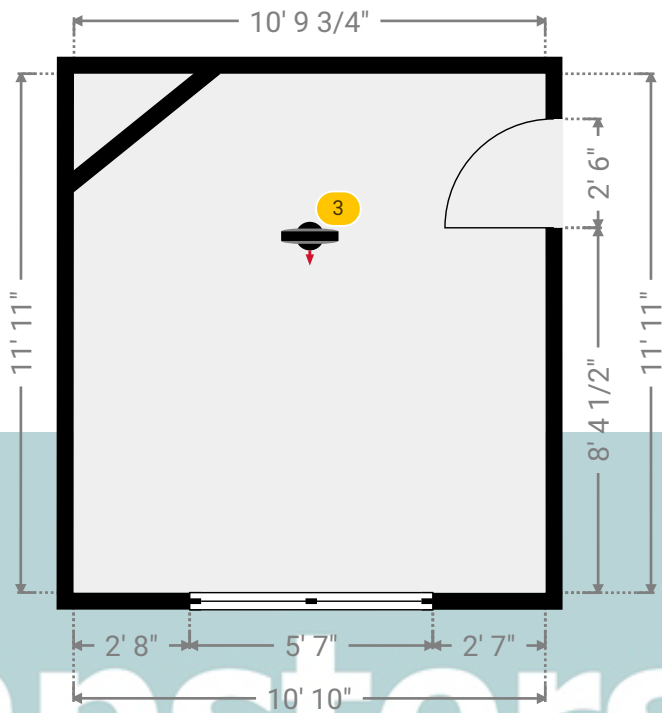
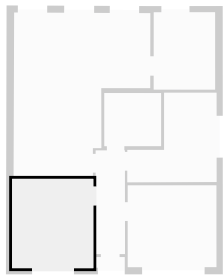
39 Crowstone Road

39 Crowstone Road, RM16 2SR Grays, England, United Kingdom
TOTAL AREA: 875.87 sq ft • LIVING AREA: 875.87 sq ft • FLOORS: 1 • ROOMS: 8



▼ Bedroom 2 Ground Floor

WIDTH: 10' 10" • LENGTH: 11' 11"
AREA: 129.02 sq ft • PERIMETER: 45' 5 3/4"



Kempsters

ESTATE AGENTS

▼ Bedroom 2/Ground Floor

Photos
2 Photos (see photos page)

3 360 PANORAMA

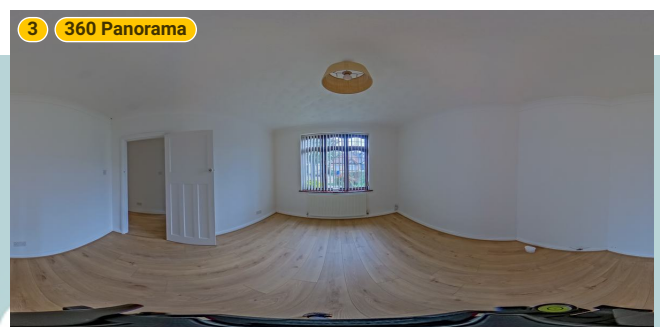
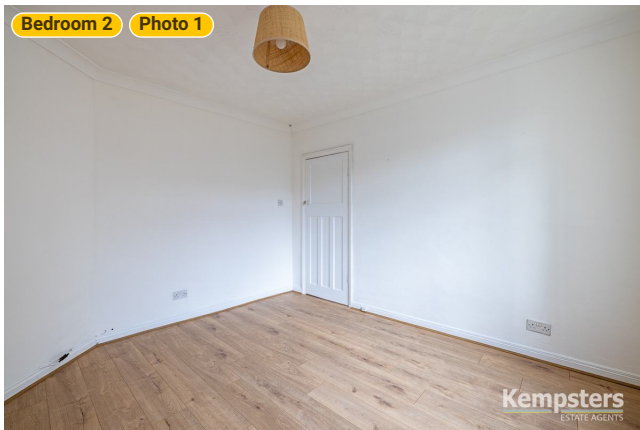
Photo
1 Photo (see photos page)



39 Crowstone Road

39 Crowstone Road, RM16 2SR Grays, England, United Kingdom
TOTAL AREA: 875.87 sq ft • LIVING AREA: 875.87 sq ft • FLOORS: 1 • ROOMS: 8

▼ Photos/Bedroom 2



Kempsters
ESTATE AGENTS

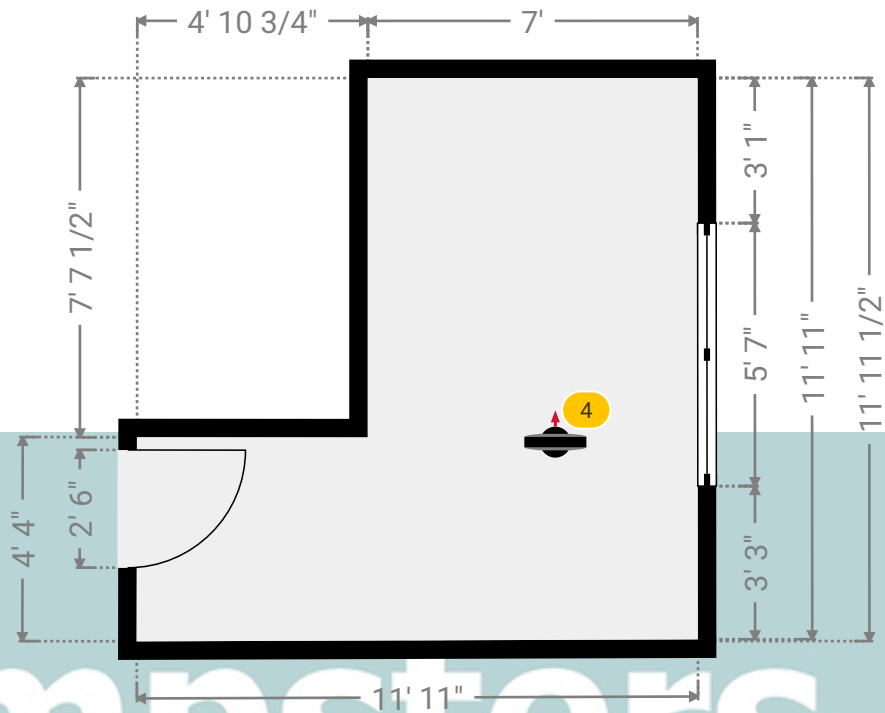
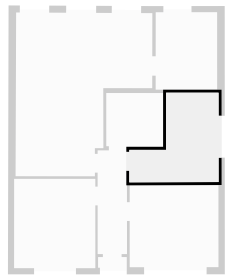
39 Crowstone Road

39 Crowstone Road, RM16 2SR Grays, England, United Kingdom
TOTAL AREA: 875.87 sq ft • LIVING AREA: 875.87 sq ft • FLOORS: 1 • ROOMS: 8



▼ Bedroom 3 Ground Floor

WIDTH: 11' 11" • LENGTH: 11' 11 1/2"
AREA: 104.75 sq ft • PERIMETER: 47' 8 1/4"

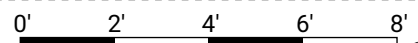


▼ Bedroom 3/Ground Floor

Photos
2 Photos (see photos page)

4 360 PANORAMA

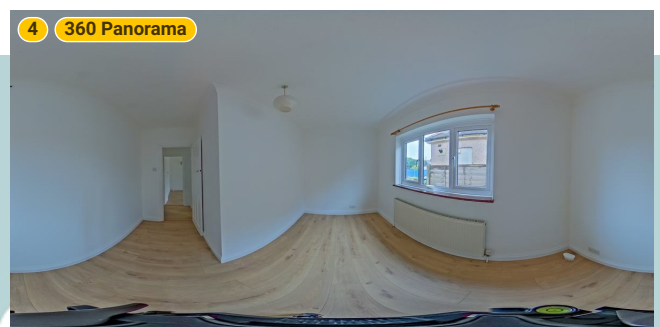
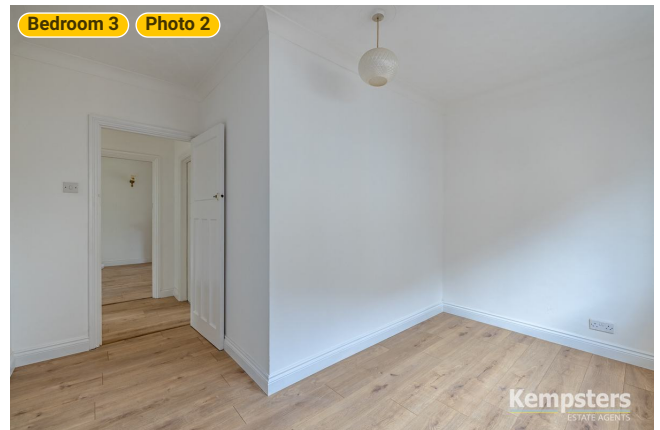
Photo
1 Photo (see photos page)



39 Crowstone Road

39 Crowstone Road, RM16 2SR Grays, England, United Kingdom
TOTAL AREA: 875.87 sq ft • LIVING AREA: 875.87 sq ft • FLOORS: 1 • ROOMS: 8

▼ Photos/Bedroom 3



Kempsters
ESTATE AGENTS

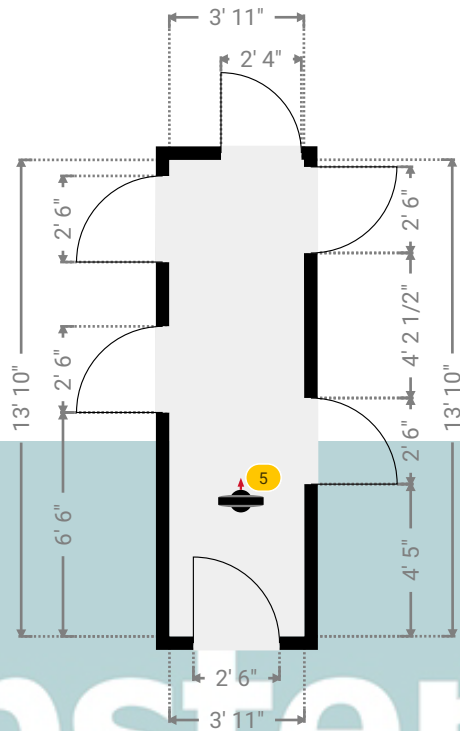
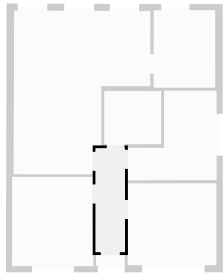
39 Crowstone Road

39 Crowstone Road, RM16 2SR Grays, England, United Kingdom
TOTAL AREA: 875.87 sq ft • LIVING AREA: 875.87 sq ft • FLOORS: 1 • ROOMS: 8



▼ Hall Ground Floor

WIDTH: 3' 11" • LENGTH: 13' 10"
AREA: 54.11 sq ft • PERIMETER: 35' 6"



Kempsters

ESTATE AGENTS

▼ Hall/Ground Floor

Photos
2 Photos (see photos page)

5 360 PANORAMA

Photo
1 Photo (see photos page)

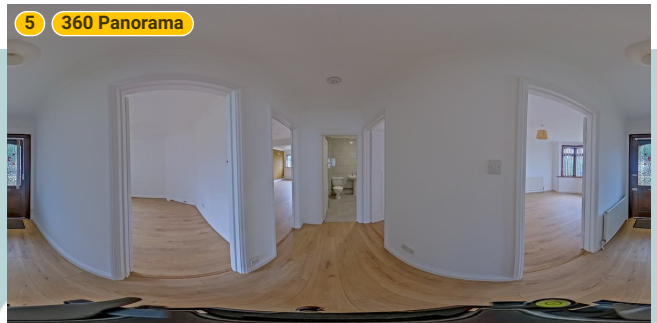
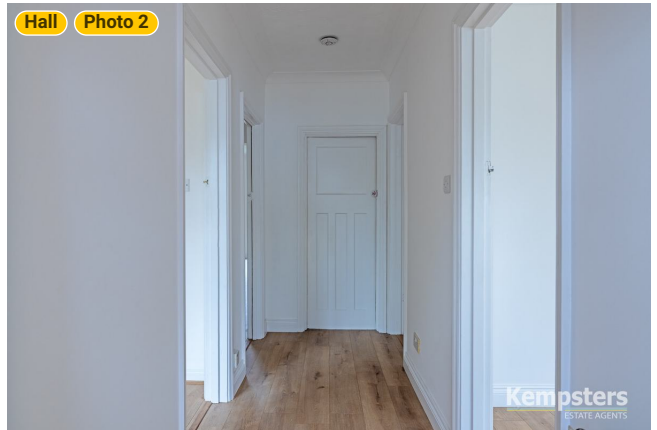
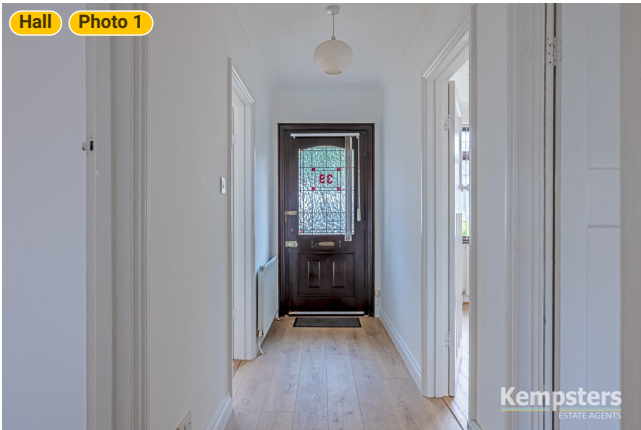


39 Crowstone Road

39 Crowstone Road, RM16 2SR Grays, England, United Kingdom
TOTAL AREA: 875.87 sq ft • LIVING AREA: 875.87 sq ft • FLOORS: 1 • ROOMS: 8



▼ Photos/Hall



Kempsters
ESTATE AGENTS

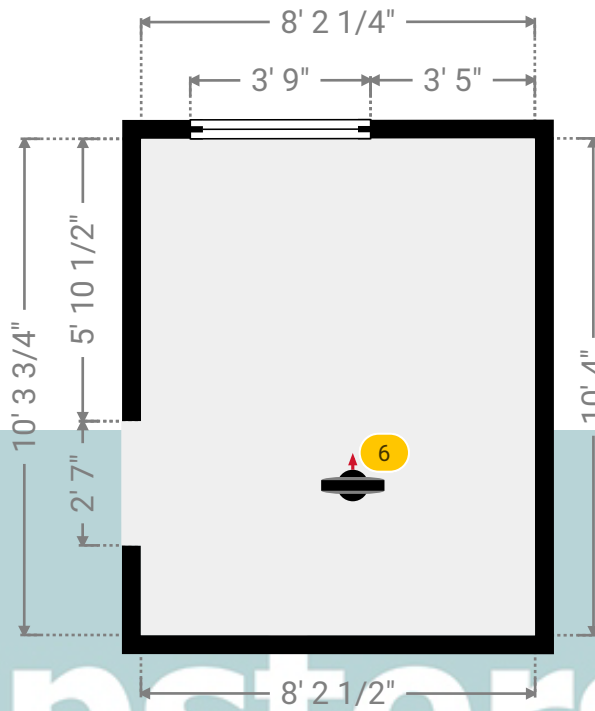
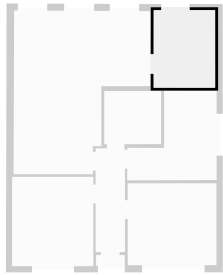
39 Crowstone Road

39 Crowstone Road, RM16 2SR Grays, England, United Kingdom
TOTAL AREA: 875.87 sq ft • LIVING AREA: 875.87 sq ft • FLOORS: 1 • ROOMS: 8



▼ Kitchen Ground Floor

WIDTH: 8' 2 1/2" • LENGTH: 10' 4"
AREA: 84.61 sq ft • PERIMETER: 37' 1/2"



▼ Kitchen/Ground Floor

Photos
3 Photos (see photos page)

6 360 PANORAMA

Photo
1 Photo (see photos page)

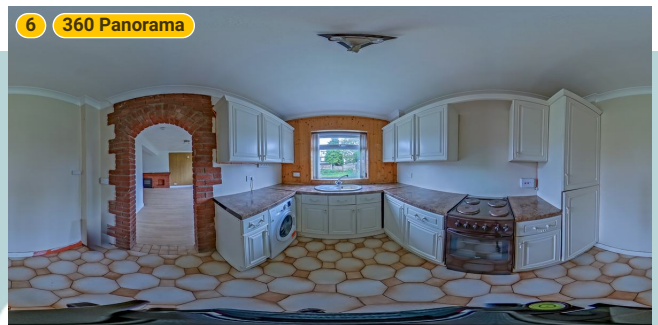


39 Crowstone Road

39 Crowstone Road, RM16 2SR Grays, England, United Kingdom
TOTAL AREA: 875.87 sq ft • LIVING AREA: 875.87 sq ft • FLOORS: 1 • ROOMS: 8



▼ Photos/Kitchen



KEMPSTERS
ESTATE AGENTS

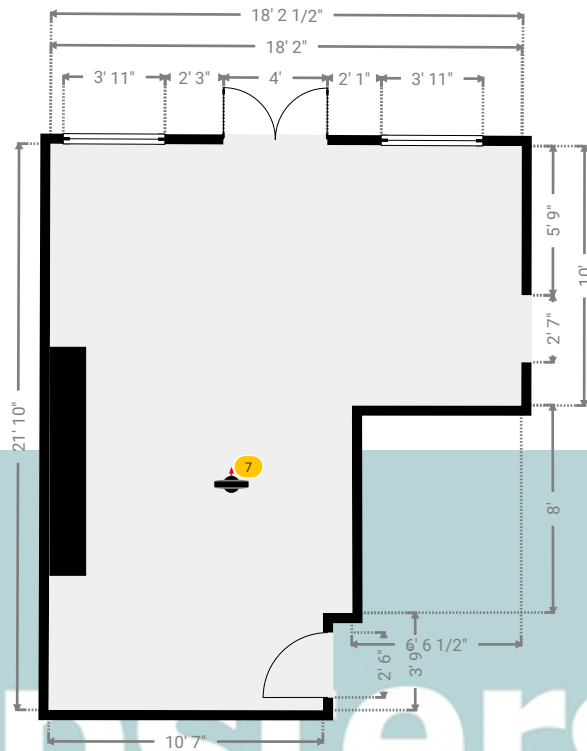
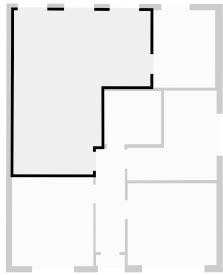
39 Crowstone Road

39 Crowstone Road, RM16 2SR Grays, England, United Kingdom
TOTAL AREA: 875.87 sq ft • LIVING AREA: 875.87 sq ft • FLOORS: 1 • ROOMS: 8



▼ Lounge & Dining Ground Floor

WIDTH: 18' 2 1/2" • LENGTH: 21' 10"
AREA: 315.57 sq ft • PERIMETER: 80'



▼ Lounge & Dining/Ground Floor

Photos
6 Photos (see photos page)

7 360 PANORAMA

Photo
1 Photo (see photos page)

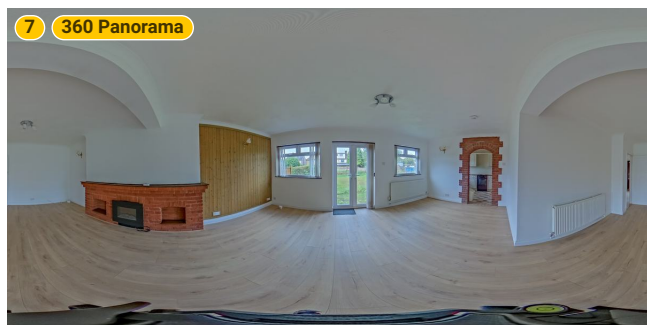
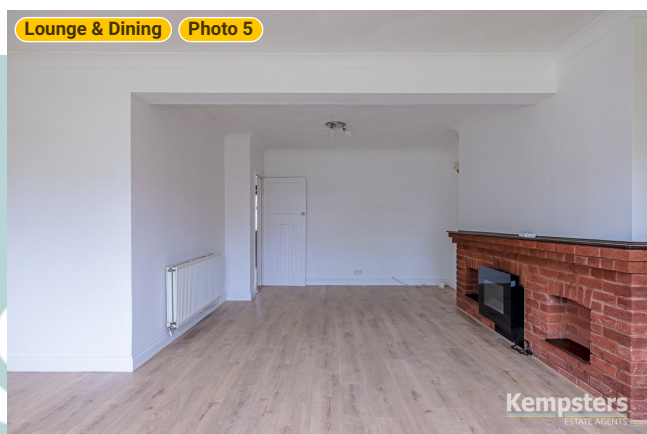
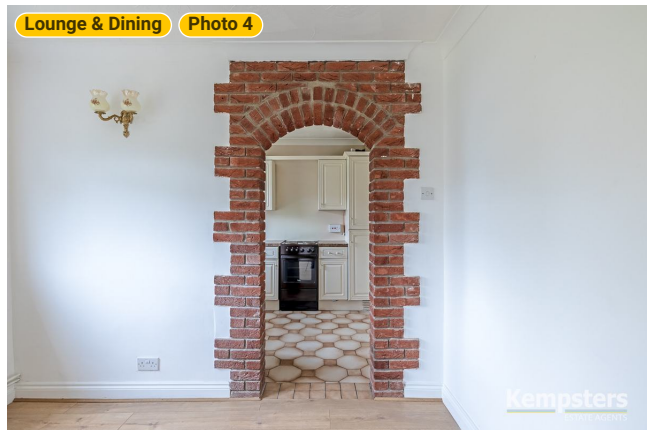
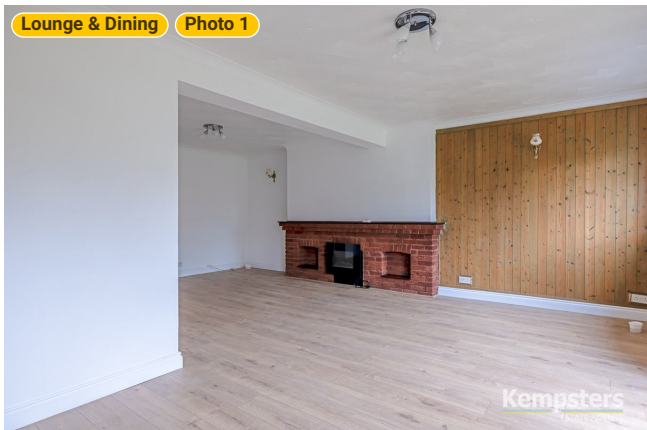


39 Crowstone Road

39 Crowstone Road, RM16 2SR Grays, England, United Kingdom
TOTAL AREA: 875.87 sq ft • LIVING AREA: 875.87 sq ft • FLOORS: 1 • ROOMS: 8



▼ Photos/Lounge & Dining



Kempsters Estate Agents take no responsibility for any error, omission, misstatement or use of data shown. This plan is for illustrative purposes only and whilst every attempt has been made to ensure the accuracy of the floorplan shown, all measurements, positioning, fixtures, fittings and any other data shown are an approximate interpretation for illustrative purposes only. These plans are the property of Kempsters Estate Agents Ltd and must not be reproduced in any form without our permission.