

6 Birch Close

SUBMITTED BY

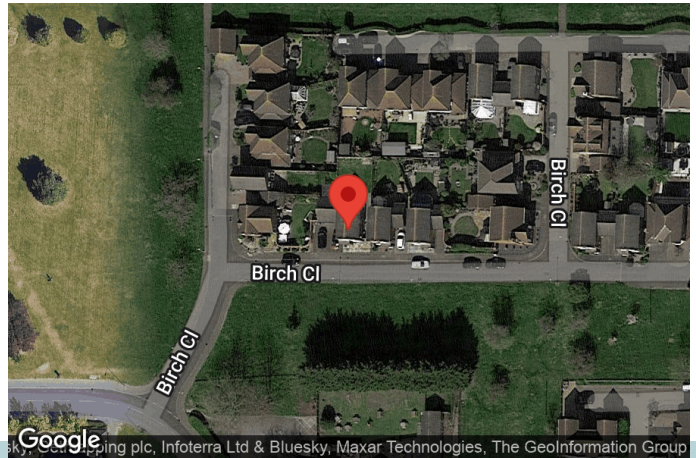
Ian
ianhk@icloud.com

CREATED ON

2023-07-11

LOCATION

6 Birch Close
RM15 6XD South Ockendon
England
United Kingdom



Total area
949.60 sq ft

Floors
2

Rooms
13

Bathroom
1

Photos

2 Photos (see photos page)

Kempsters
ESTATE AGENTS

6 Birch Close

6 Birch Close, RM15 6XD South Ockendon, England, United Kingdom
TOTAL AREA: 949.60 sq ft • LIVING AREA: 817.85 sq ft • FLOORS: 2 • ROOMS: 13

Kempsters
ESTATE AGENTS

▼ Photos/6 Birch Close



Kempsters
ESTATE AGENTS

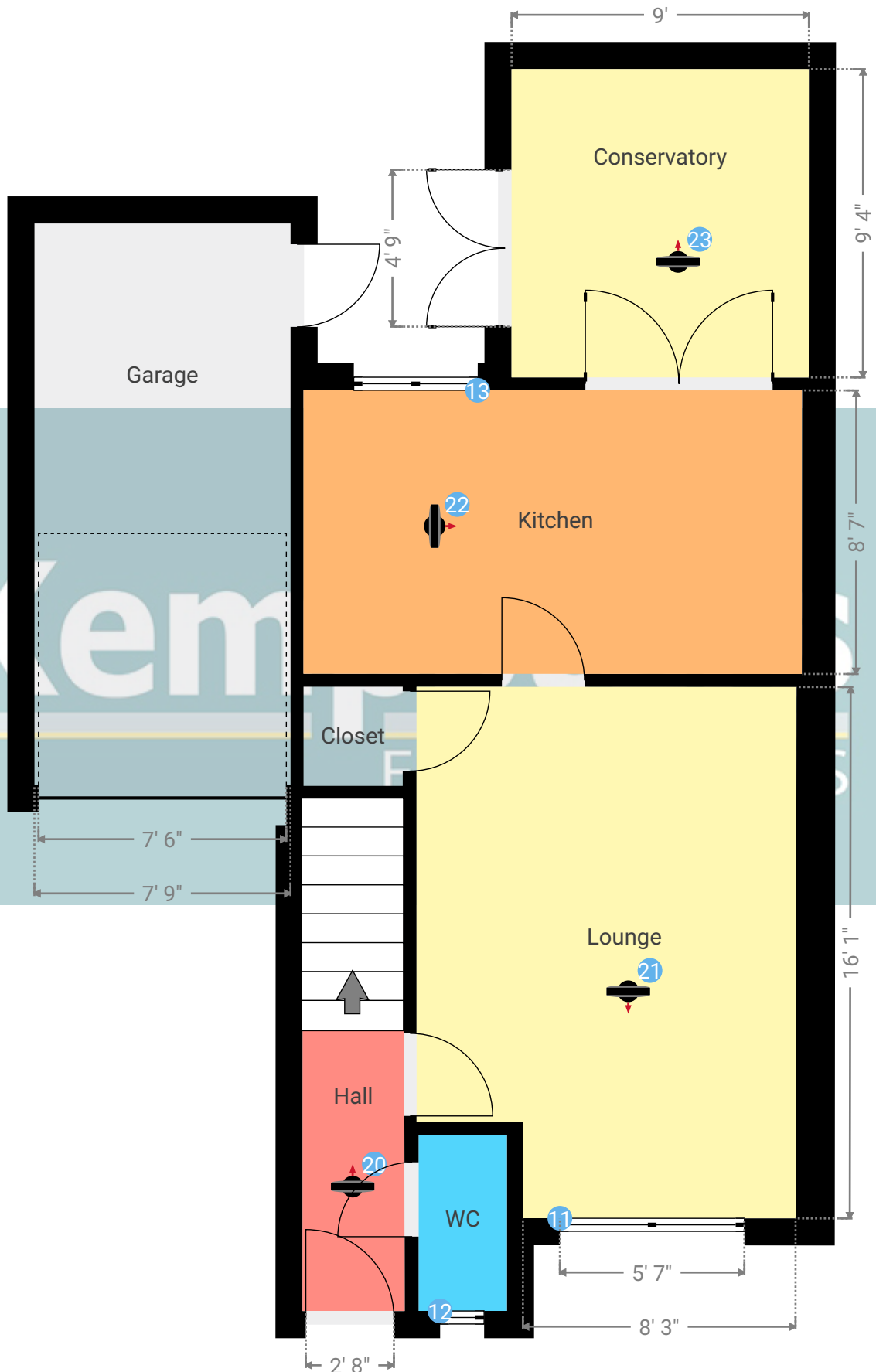
6 Birch Close

6 Birch Close, RM15 6XD South Ockendon, England, United Kingdom
TOTAL AREA: 949.60 sq ft • LIVING AREA: 817.85 sq ft • FLOORS: 2 • ROOMS: 13



▼ Ground Floor

TOTAL AREA: 591.04 sq ft • LIVING AREA: 459.29 sq ft • ROOMS: 7



Kempsters Estate Agents take no responsibility for any error, omission, misstatement or use of data shown. This plan is for illustrative purposes only and whilst every attempt has been made to ensure the accuracy of the floorplan shown, all measurements, positioning, fixtures, fittings and any other data shown are an approximate interpretation for illustrative purposes only. These plans are the property of Kempsters Estate Agents Ltd and must not be reproduced in any form without our permission.

0' 2' 4' 6' 8' 1:54

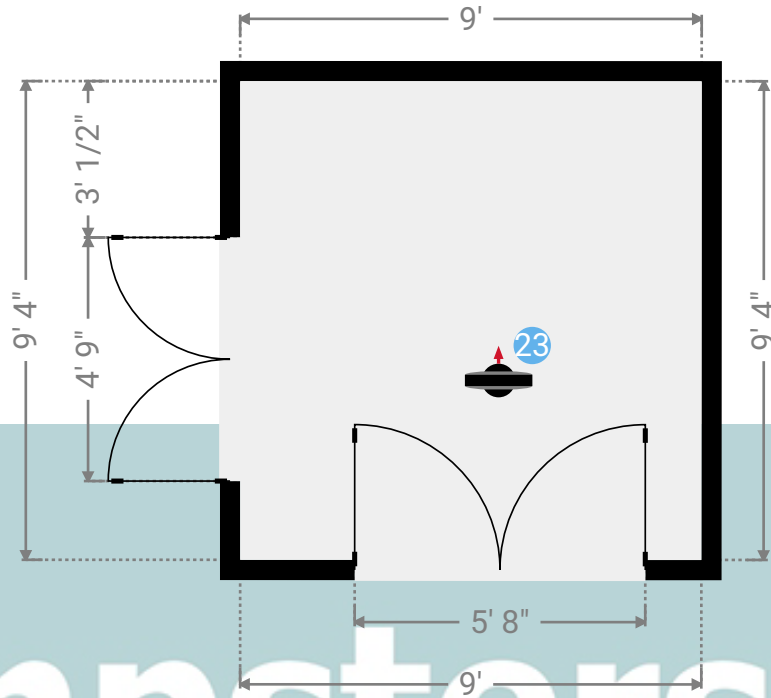
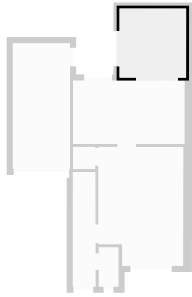
6 Birch Close

6 Birch Close, RM15 6XD South Ockendon, England, United Kingdom
TOTAL AREA: 949.60 sq ft • LIVING AREA: 817.85 sq ft • FLOORS: 2 • ROOMS: 13



▼ Conservatory Ground Floor

WIDTH: 9' • LENGTH: 9' 4"
AREA: 83.96 sq ft • PERIMETER: 36' 8"



▼ Conservatory /Ground Floor

Photos
3 Photos (see photos page)

23 360 PANORAMA

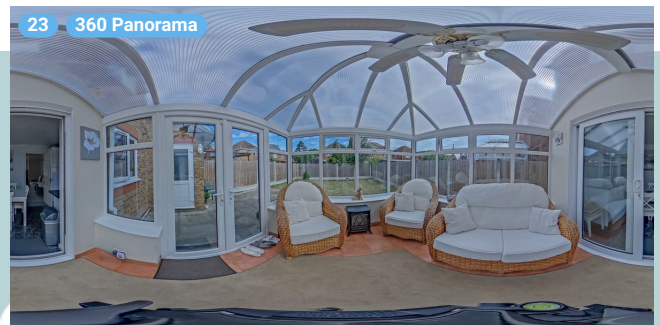
Photo
1 Photo (see photos page)



6 Birch Close

6 Birch Close, RM15 6XD South Ockendon, England, United Kingdom
TOTAL AREA: 949.60 sq ft • LIVING AREA: 817.85 sq ft • FLOORS: 2 • ROOMS: 13

▼ Photos/Conservatory



Kempsters
ESTATE AGENTS

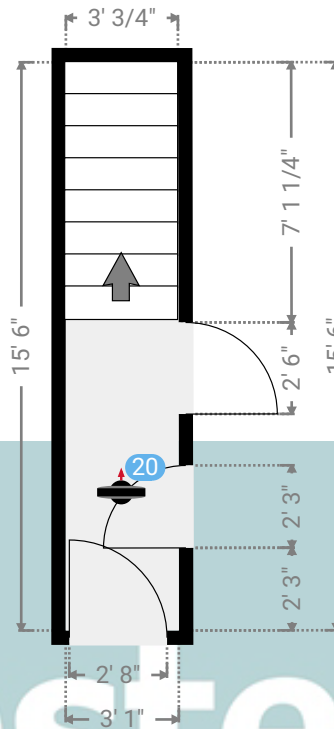
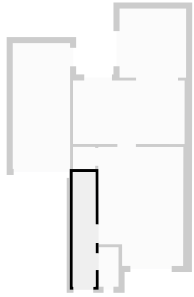
6 Birch Close

6 Birch Close, RM15 6XD South Ockendon, England, United Kingdom
TOTAL AREA: 949.60 sq ft • LIVING AREA: 817.85 sq ft • FLOORS: 2 • ROOMS: 13

Kempsters
ESTATE AGENTS

▼ Hall Ground Floor

WIDTH: 3' 1" • LENGTH: 15' 6"
AREA: 47.68 sq ft • PERIMETER: 37' 2"



▼ Hall/Ground Floor

Photos

2 Photos (see photos page)

20 360 PANORAMA

Photo

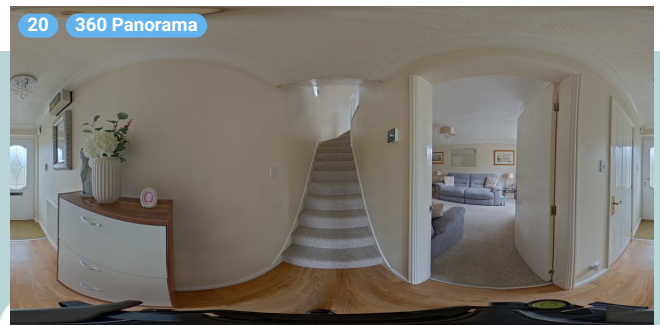
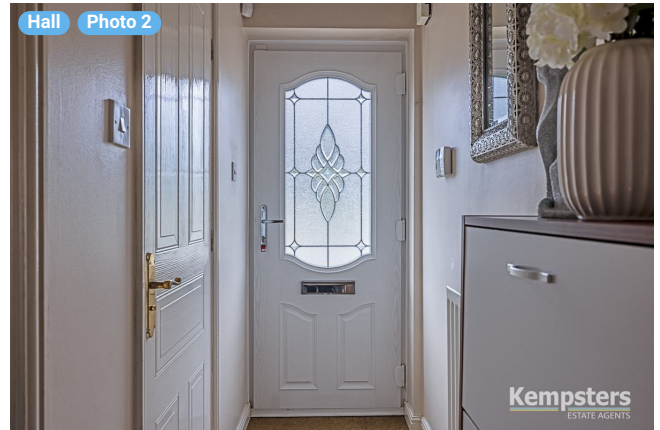
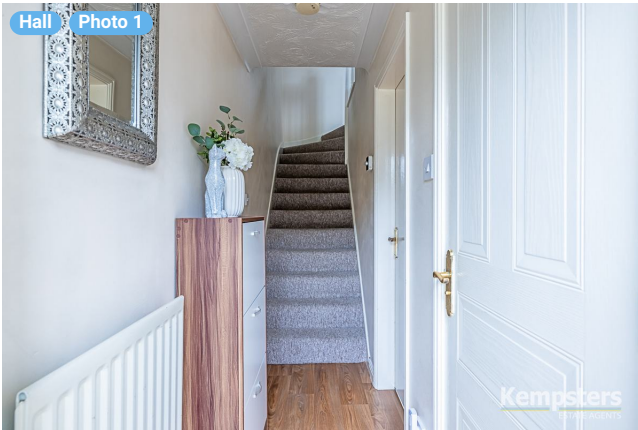
1 Photo (see photos page)



6 Birch Close

6 Birch Close, RM15 6XD South Ockendon, England, United Kingdom
TOTAL AREA: 949.60 sq ft • LIVING AREA: 817.85 sq ft • FLOORS: 2 • ROOMS: 13

▼ Photos/Hall



Kempsters
ESTATE AGENTS

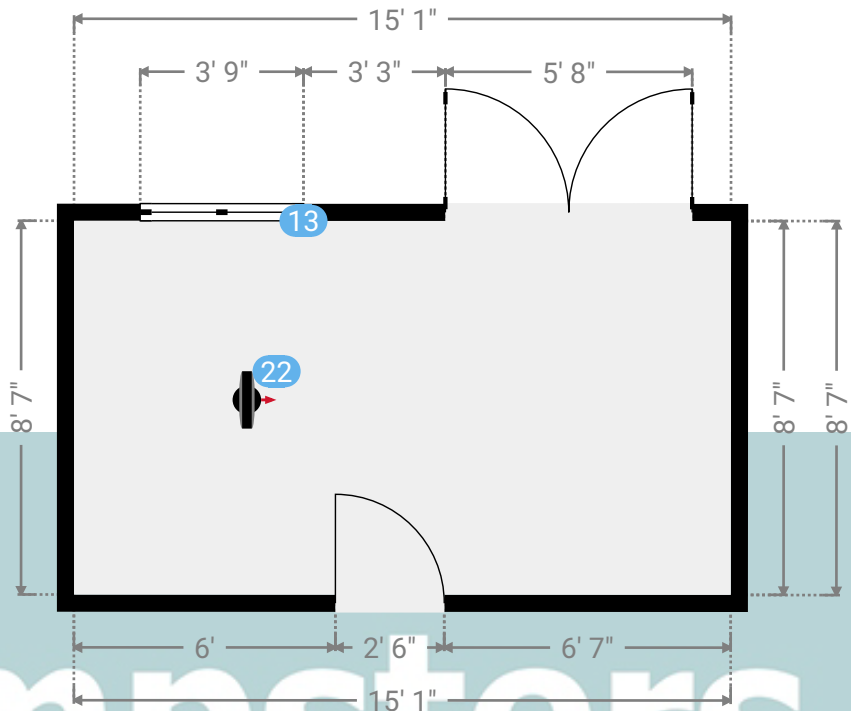
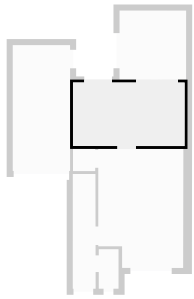
6 Birch Close

6 Birch Close, RM15 6XD South Ockendon, England, United Kingdom
TOTAL AREA: 949.60 sq ft • LIVING AREA: 817.85 sq ft • FLOORS: 2 • ROOMS: 13



▼ Kitchen Ground Floor

WIDTH: 15' 1" • LENGTH: 8' 7"
AREA: 129.48 sq ft • PERIMETER: 47' 4"



▼ Kitchen/Ground Floor

Photos
6 Photos (see photos page)

Kempsters
ESTATE AGENTS

13 FRENCH WINDOW



Height
3' 2"

Distance to Floor
3' 3 1/4"

22 360 PANORAMA



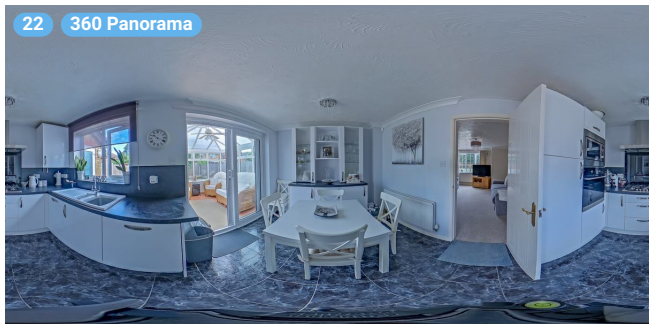
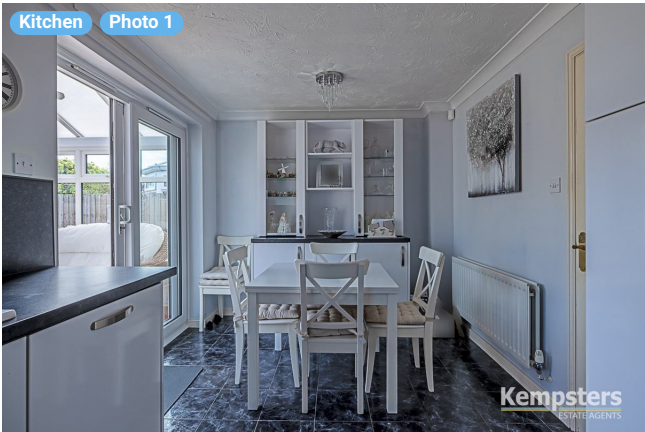
Photo
1 Photo (see photos page)

6 Birch Close

6 Birch Close, RM15 6XD South Ockendon, England, United Kingdom
TOTAL AREA: 949.60 sq ft • LIVING AREA: 817.85 sq ft • FLOORS: 2 • ROOMS: 13



▼ Photos/Kitchen



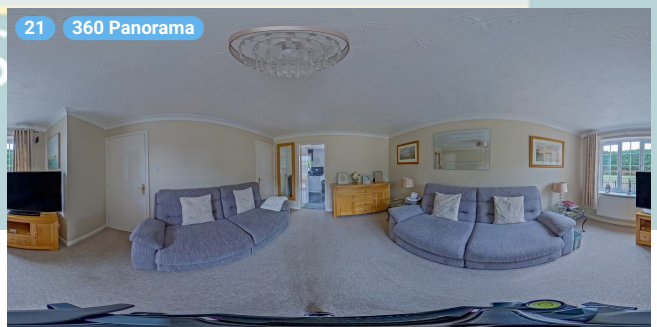
Kempsters Estate Agents take no responsibility for any error, omission, misstatement or use of data shown. This plan is for illustrative purposes only and whilst every attempt has been made to ensure the accuracy of the floorplan shown, all measurements, positioning, fixtures, fittings and any other data shown are an approximate interpretation for illustrative purposes only. These plans are the property of Kempsters Estate Agents Ltd and must not be reproduced in any form without our permission.

6 Birch Close

6 Birch Close, RM15 6XD South Ockendon, England, United Kingdom
TOTAL AREA: 949.60 sq ft • LIVING AREA: 817.85 sq ft • FLOORS: 2 • ROOMS: 13



▼ Photos/Lounge



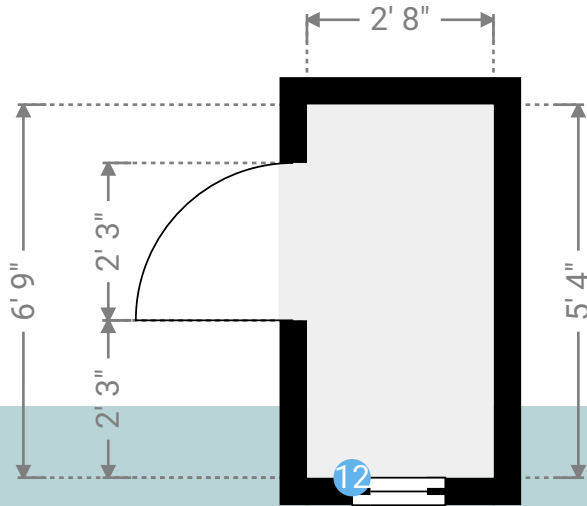
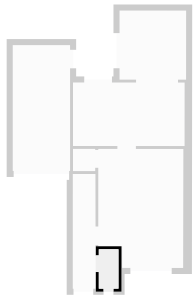
6 Birch Close

6 Birch Close, RM15 6XD South Ockendon, England, United Kingdom
TOTAL AREA: 949.60 sq ft • LIVING AREA: 817.85 sq ft • FLOORS: 2 • ROOMS: 13



▼ WC Ground Floor

WIDTH: 2' 8" • LENGTH: 5' 4"
AREA: 14.23 sq ft • PERIMETER: 16'



Kempsters

ESTATE AGENTS

▼ WC/Ground Floor

Photo
1 Photo (see photos page)

12 CASEMENT WINDOW

Height
3' 2"

Distance to Floor
3' 6"



6 Birch Close

6 Birch Close, RM15 6XD South Ockendon, England, United Kingdom
TOTAL AREA: 949.60 sq ft • LIVING AREA: 817.85 sq ft • FLOORS: 2 • ROOMS: 13

▼ Photos/WC



Kempsters
ESTATE AGENTS

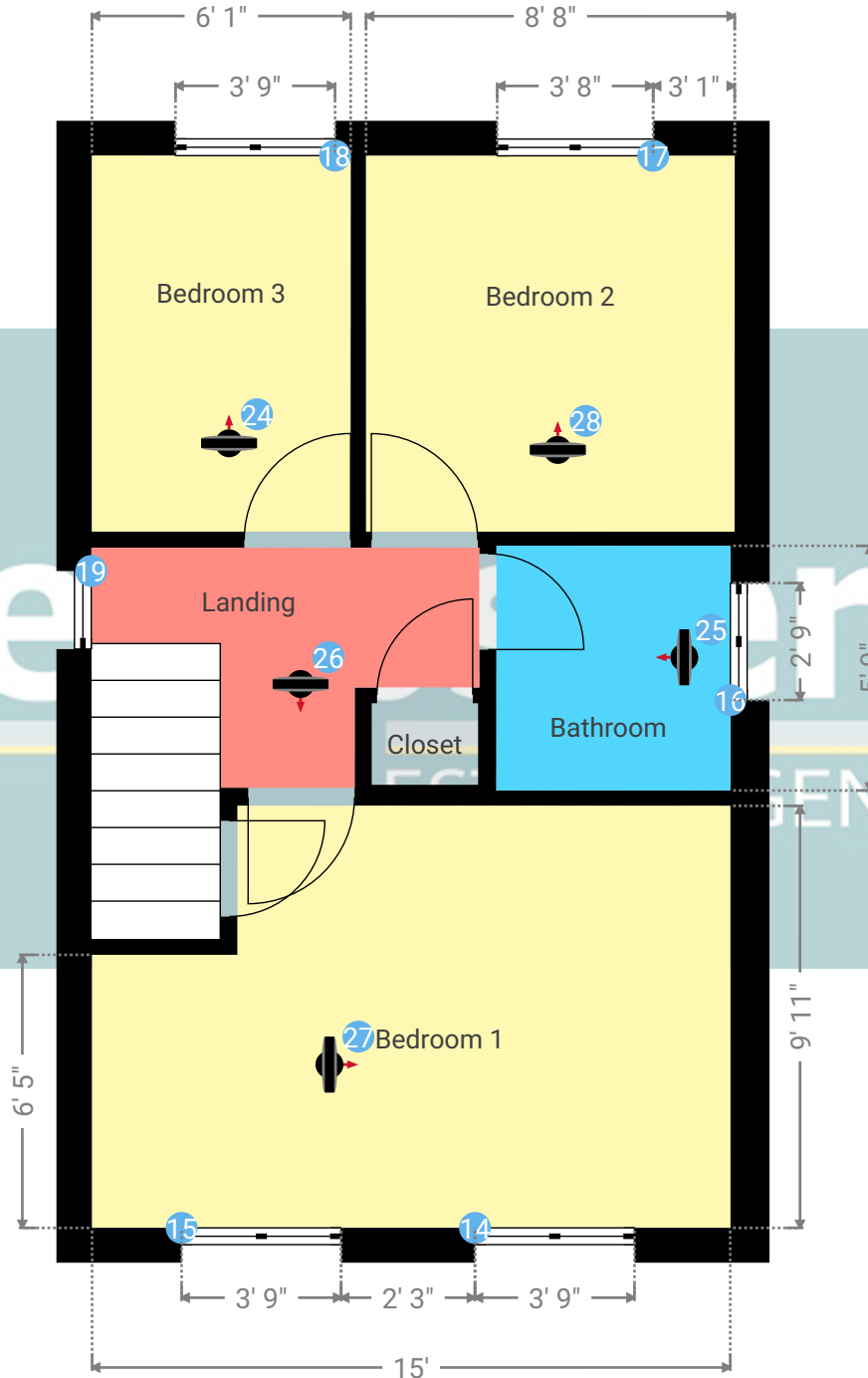
6 Birch Close

6 Birch Close, RM15 6XD South Ockendon, England, United Kingdom
TOTAL AREA: 949.60 sq ft • LIVING AREA: 817.85 sq ft • FLOORS: 2 • ROOMS: 13

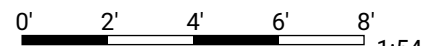


▼ 1st Floor

TOTAL AREA: 358.56 sq ft • LIVING AREA: 358.56 sq ft • ROOMS: 6



Kempsters Estate Agents take no responsibility for any error, omission, misstatement or use of data shown. This plan is for illustrative purposes only and whilst every attempt has been made to ensure the accuracy of the floorplan shown, all measurements, positioning, fixtures, fittings and any other data shown are an approximate interpretation for illustrative purposes only. These plans are the property of Kempsters Estate Agents Ltd and must not be reproduced in any form without our permission.



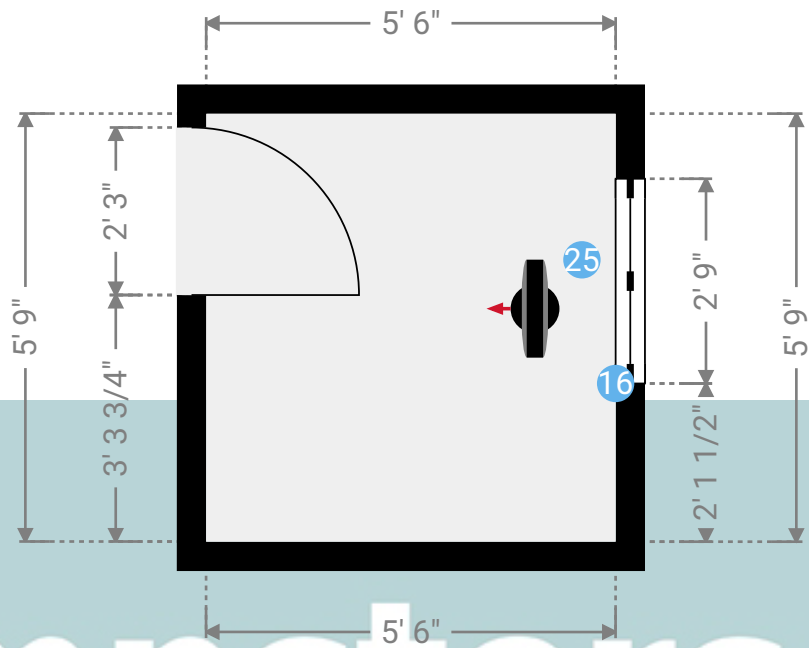
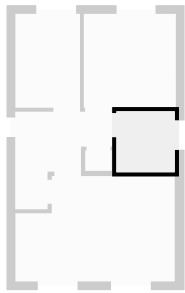
6 Birch Close

6 Birch Close, RM15 6XD South Ockendon, England, United Kingdom
TOTAL AREA: 949.60 sq ft • LIVING AREA: 817.85 sq ft • FLOORS: 2 • ROOMS: 13

Kempsters
ESTATE AGENTS

▼ Bathroom 1st Floor

WIDTH: 5' 6" • LENGTH: 5' 9"
AREA: 31.62 sq ft • PERIMETER: 22' 6"



Kempsters

ESTATE AGENTS

▼ Bathroom/1st Floor

Photos

2 Photos (see photos page)

16 FRENCH WINDOW

Height
3' 2"

Distance to Floor
3' 4"



25 360 PANORAMA

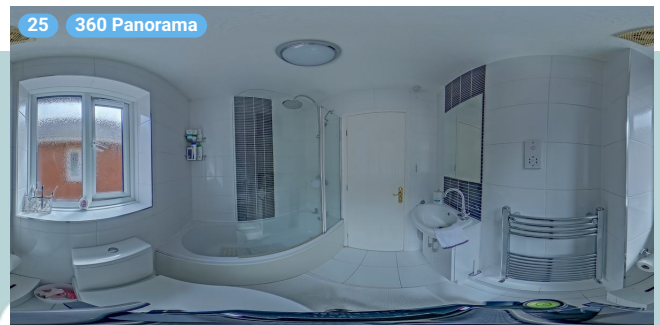
Photo
1 Photo (see photos page)



6 Birch Close

6 Birch Close, RM15 6XD South Ockendon, England, United Kingdom
TOTAL AREA: 949.60 sq ft • LIVING AREA: 817.85 sq ft • FLOORS: 2 • ROOMS: 13

▼ Photos/Bathroom



Kempsters
ESTATE AGENTS

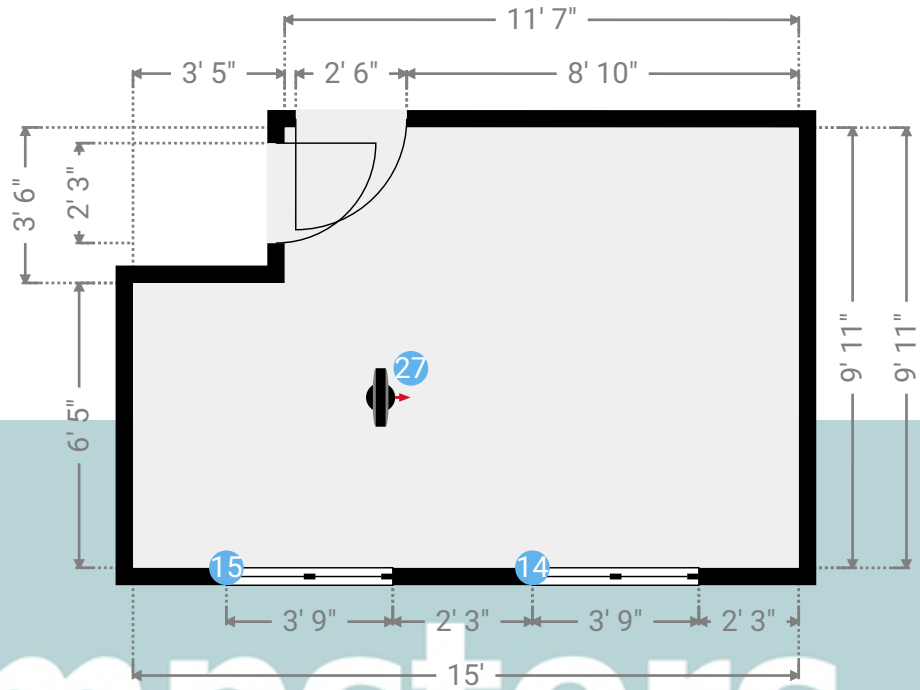
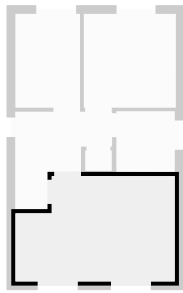
6 Birch Close

6 Birch Close, RM15 6XD South Ockendon, England, United Kingdom
TOTAL AREA: 949.60 sq ft • LIVING AREA: 817.85 sq ft • FLOORS: 2 • ROOMS: 13



▼ Bedroom 1 1st Floor

WIDTH: 15' • LENGTH: 9' 11"
AREA: 136.81 sq ft • PERIMETER: 49' 10"



▼ Bedroom 1/1st Floor

Photos
4 Photos (see photos page)

14 FRENCH WINDOW

Height
3' 9"

Distance to Floor
2' 10"



15 FRENCH WINDOW

Height
3' 9"

Distance to Floor
2' 10"



27 360 PANORAMA

Photo
1 Photo (see photos page)

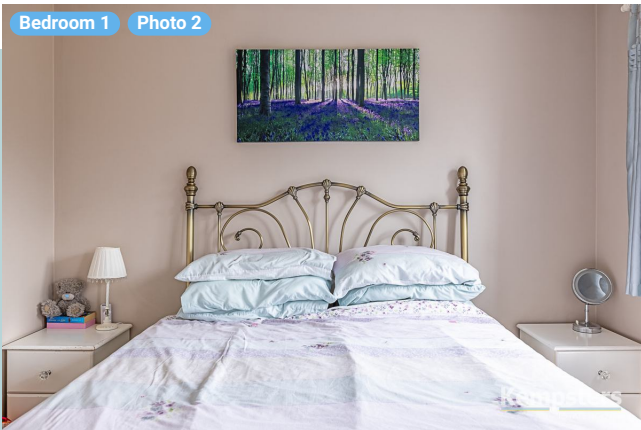


6 Birch Close

6 Birch Close, RM15 6XD South Ockendon, England, United Kingdom
TOTAL AREA: 949.60 sq ft • LIVING AREA: 817.85 sq ft • FLOORS: 2 • ROOMS: 13



▼ Photos/Bedroom 1



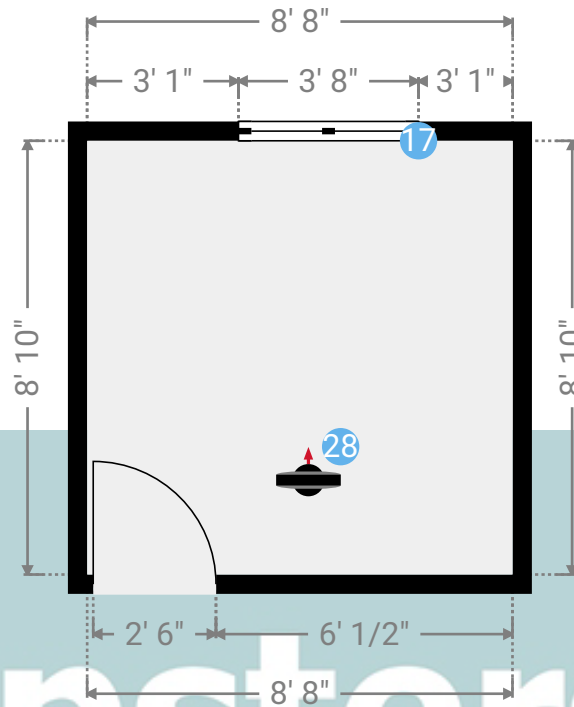
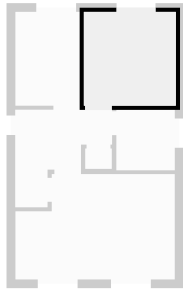
6 Birch Close

6 Birch Close, RM15 6XD South Ockendon, England, United Kingdom
TOTAL AREA: 949.60 sq ft • LIVING AREA: 817.85 sq ft • FLOORS: 2 • ROOMS: 13

Kempsters
ESTATE AGENTS

▼ Bedroom 2 1st Floor

WIDTH: 8' 8" • LENGTH: 8' 10"
AREA: 76.53 sq ft • PERIMETER: 35'



▼ Bedroom 2/1st Floor

Photo

1 Photo (see photos page)

17 FRENCH WINDOW

Height
3' 9"

Distance to Floor
2' 9"



28 360 PANORAMA

Photo

1 Photo (see photos page)

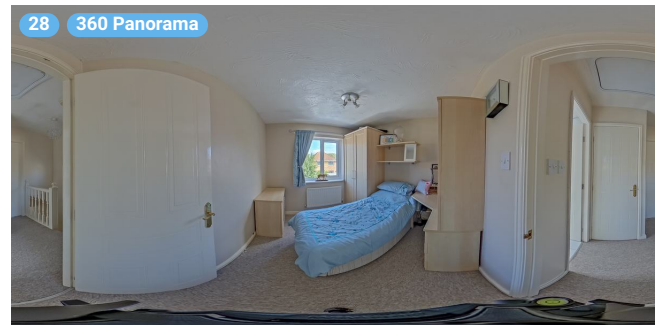


6 Birch Close

6 Birch Close, RM15 6XD South Ockendon, England, United Kingdom
TOTAL AREA: 949.60 sq ft • LIVING AREA: 817.85 sq ft • FLOORS: 2 • ROOMS: 13

Kempsters
ESTATE AGENTS

▼ Photos/Bedroom 2



Kempsters
ESTATE AGENTS

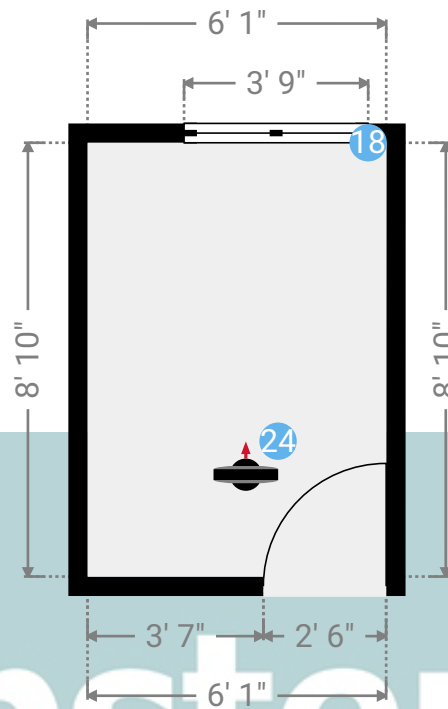
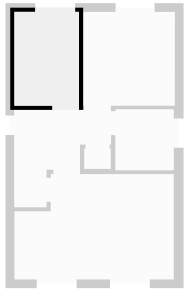
6 Birch Close

6 Birch Close, RM15 6XD South Ockendon, England, United Kingdom
TOTAL AREA: 949.60 sq ft • LIVING AREA: 817.85 sq ft • FLOORS: 2 • ROOMS: 13

Kempsters
ESTATE AGENTS

▼ Bedroom 3 1st Floor

WIDTH: 6' 1" • LENGTH: 8' 10"
AREA: 53.73 sq ft • PERIMETER: 29' 10"



▼ Bedroom 3/1st Floor

Photo

1 Photo (see photos page)

18 FRENCH WINDOW

Height
3' 9"

Distance to Floor
2' 9"



24 360 PANORAMA

Photo

1 Photo (see photos page)

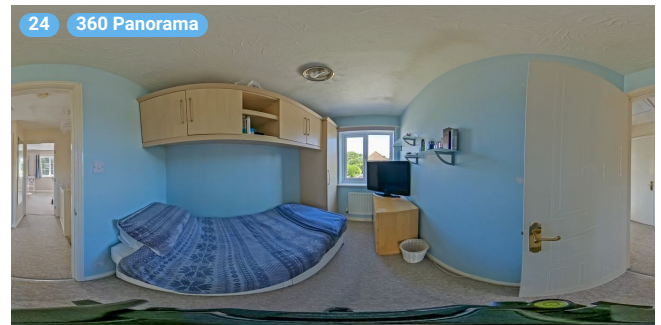


6 Birch Close

6 Birch Close, RM15 6XD South Ockendon, England, United Kingdom
TOTAL AREA: 949.60 sq ft • LIVING AREA: 817.85 sq ft • FLOORS: 2 • ROOMS: 13

Kempsters
ESTATE AGENTS

▼ Photos/Bedroom 3



Kempsters

ESTATE AGENTS

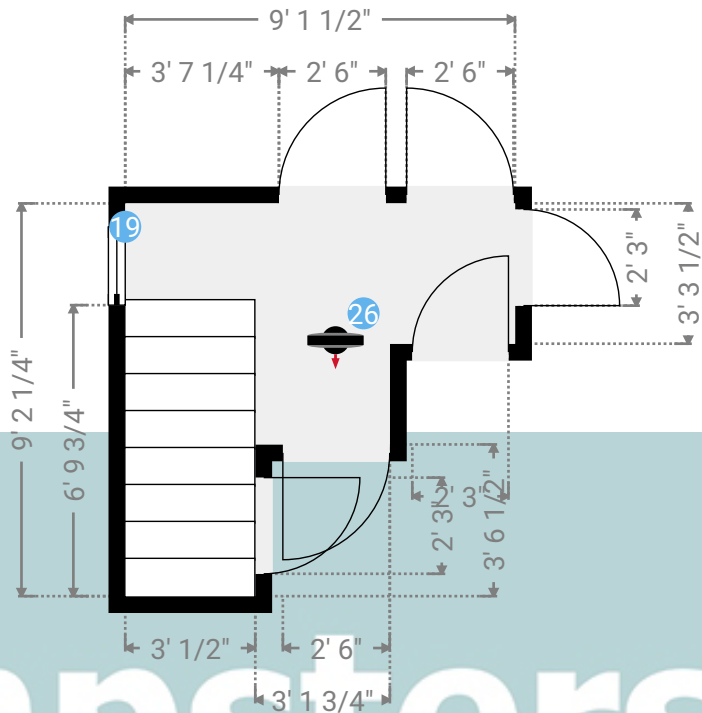
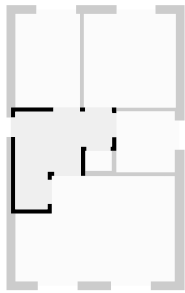
6 Birch Close

6 Birch Close, RM15 6XD South Ockendon, England, United Kingdom
TOTAL AREA: 949.60 sq ft • LIVING AREA: 817.85 sq ft • FLOORS: 2 • ROOMS: 13



▼ Landing 1st Floor

WIDTH: 9' 1 1/2" • LENGTH: 9' 2 1/4"
AREA: 55.34 sq ft • PERIMETER: 36' 7 1/2"



▼ Landing/1st Floor

Photos
3 Photos (see photos page)

19 CASEMENT WINDOW

Height
3'

Distance to Floor
3' 3 1/4"



26 360 PANORAMA

Photo
1 Photo (see photos page)

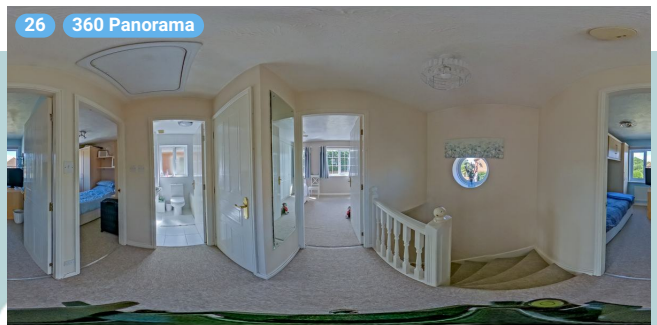
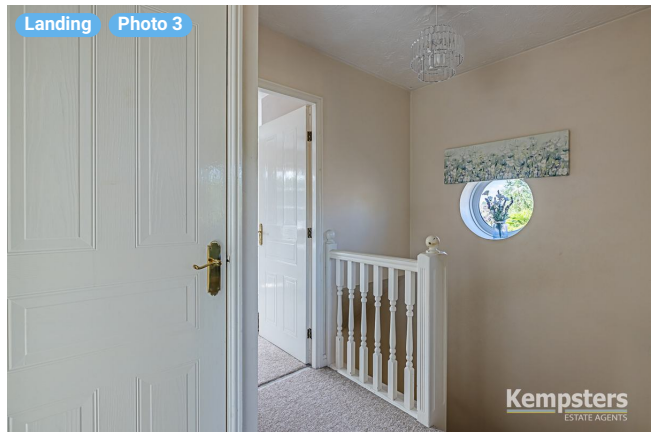


6 Birch Close

6 Birch Close, RM15 6XD South Ockendon, England, United Kingdom
TOTAL AREA: 949.60 sq ft • LIVING AREA: 817.85 sq ft • FLOORS: 2 • ROOMS: 13



▼ Photos/Landing



KEMPSTERS
ESTATE AGENTS