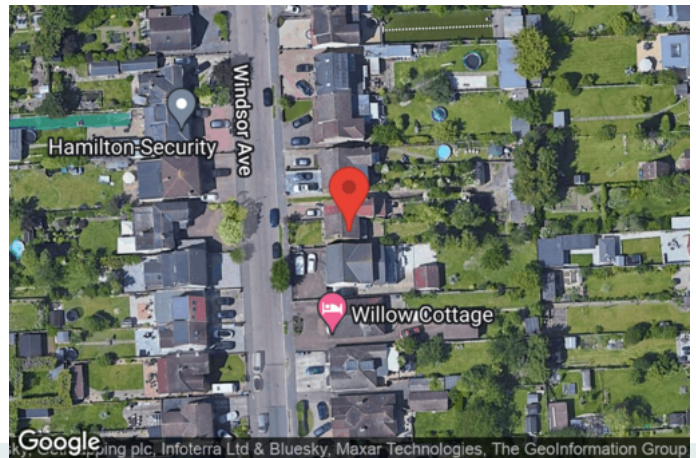


32 Windsor Avenue

SUBMITTED BY
Ian
ianhk@icloud.com

CREATED ON
2022-08-12

LOCATION
32 Windsor Ave
RM16 2UB Grays
England
United Kingdom



Total area 917.43 sq ft	Floors 2	Rooms 6	Bathroom 1
-----------------------------------	--------------------	-------------------	----------------------

Kempsters
ESTATE AGENTS

32 Windsor Avenue

32 Windsor Ave, RM16 2UB Grays, England, United Kingdom
TOTAL AREA: 917.43 sq ft • LIVING AREA: 917.43 sq ft • FLOORS: 2 • ROOMS: 6

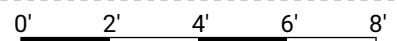


▼ Ground Floor

TOTAL AREA: 502.54 sq ft • LIVING AREA: 502.54 sq ft • ROOMS: 3



Kempsters Estate Agents take no responsibility for any error, omission, misstatement or use of data shown. This plan is for illustrative purposes only and whilst every attempt has been made to ensure the accuracy of the floorplan shown, all measurements, positioning, fixtures, fittings and any other data shown are an approximate interpretation for illustrative purposes only. These plans are the property of Kempsters Estate Agents Ltd and must not be reproduced in any form without our permission.



1:52

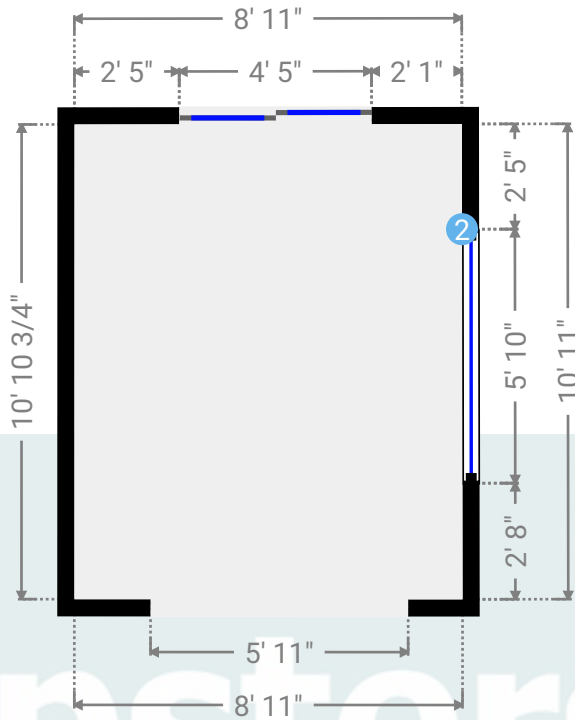
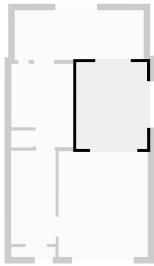
32 Windsor Avenue

32 Windsor Ave, RM16 2UB Grays, England, United Kingdom
TOTAL AREA: 917.43 sq ft • LIVING AREA: 917.43 sq ft • FLOORS: 2 • ROOMS: 6



▼ Dining Room Ground Floor

WIDTH: 8' 11" • LENGTH: 10' 11"
AREA: 97.15 sq ft • PERIMETER: 39' 7 1/2"



▼ Dining Room/Ground Floor

Photos
3 Photos (see photos page)

2 HOPPER WINDOW

Height
4' 5"

Distance to Floor
2' 9"

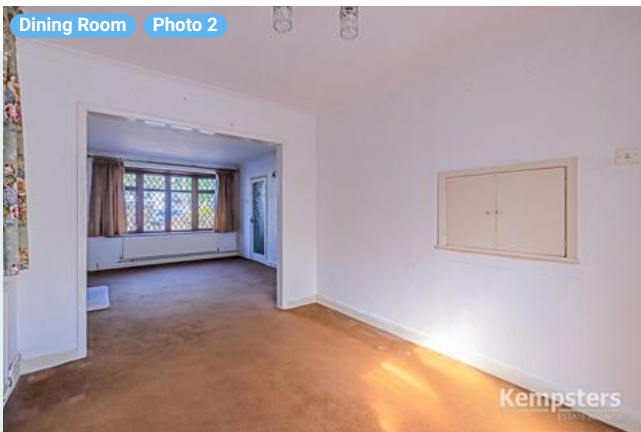


32 Windsor Avenue

32 Windsor Ave, RM16 2UB Grays, England, United Kingdom
TOTAL AREA: 917.43 sq ft • LIVING AREA: 917.43 sq ft • FLOORS: 2 • ROOMS: 6



▼ Photos/Dining Room



Kempsters
ESTATE AGENTS

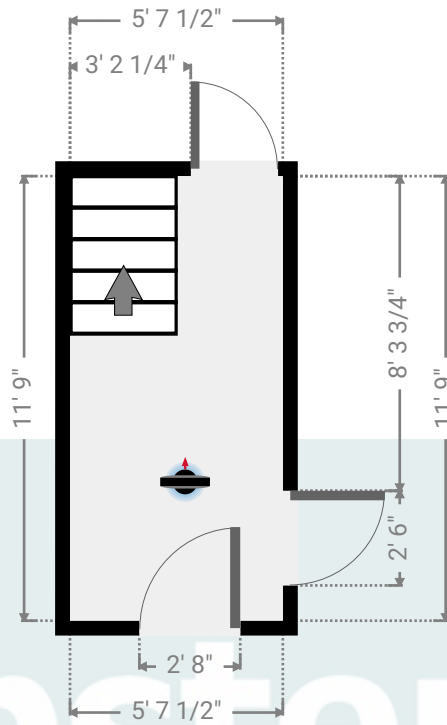
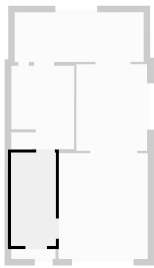
32 Windsor Avenue

32 Windsor Ave, RM16 2UB Grays, England, United Kingdom
TOTAL AREA: 917.43 sq ft • LIVING AREA: 917.43 sq ft • FLOORS: 2 • ROOMS: 6



▼ Hall Ground Floor

WIDTH: 5' 7 1/2" • LENGTH: 11' 9"
AREA: 66.09 sq ft • PERIMETER: 34' 9"



▼ Hall/Ground Floor

Photos
2 Photos (see photos page)

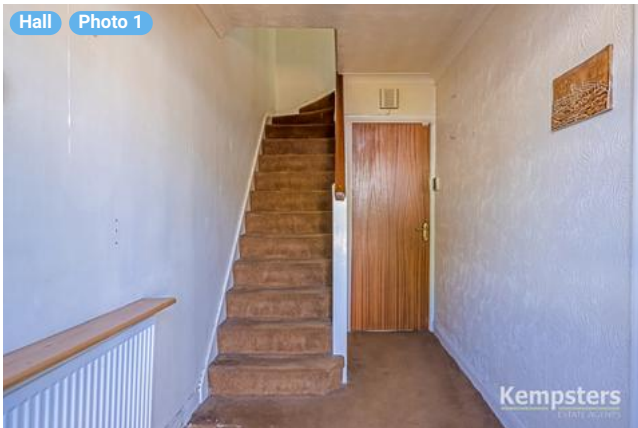


32 Windsor Avenue

32 Windsor Ave, RM16 2UB Grays, England, United Kingdom
TOTAL AREA: 917.43 sq ft • LIVING AREA: 917.43 sq ft • FLOORS: 2 • ROOMS: 6



▼ Photos/Hall



Kempsters

ESTATE AGENTS

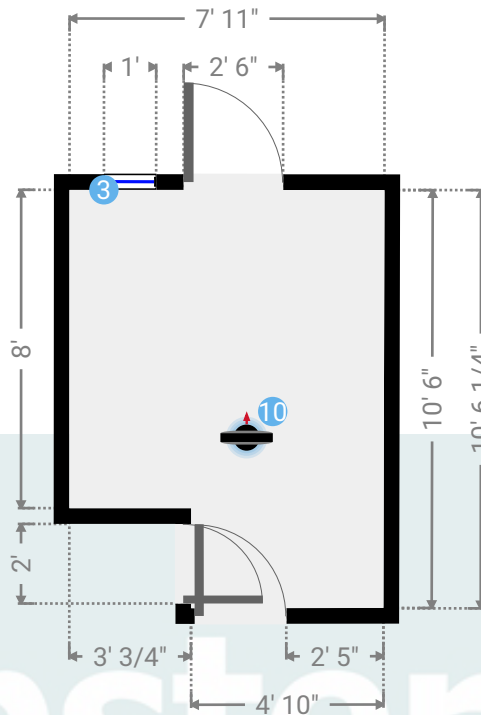
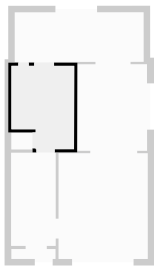
32 Windsor Avenue

32 Windsor Ave, RM16 2UB Grays, England, United Kingdom
TOTAL AREA: 917.43 sq ft • LIVING AREA: 917.43 sq ft • FLOORS: 2 • ROOMS: 6



▼ Kitchen Ground Floor

WIDTH: 7' 11" • LENGTH: 10' 6 1/4"
AREA: 75.38 sq ft • PERIMETER: 36' 9 3/4"



▼ Kitchen/Ground Floor

Photos
3 Photos (see photos page)

3 CASEMENT WINDOW

Height
2' 8"

Distance to Floor
3' 10"



10 360 PANORAMA

Photo
1 Photo (see photos page)

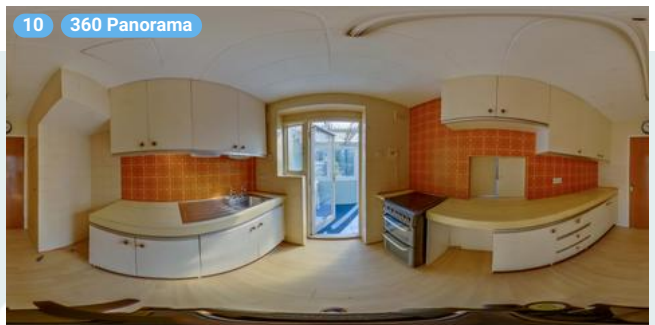
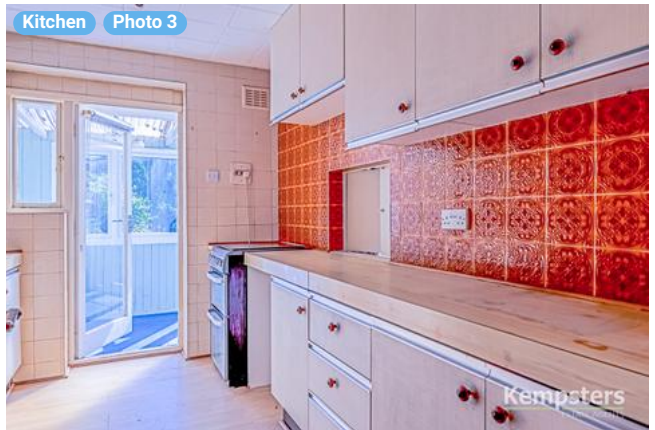
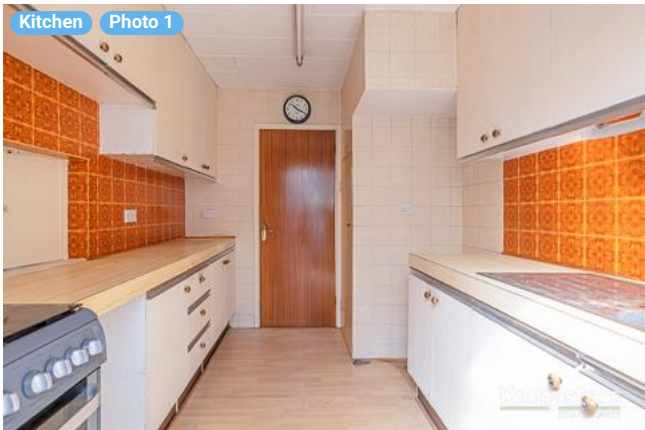


32 Windsor Avenue

32 Windsor Ave, RM16 2UB Grays, England, United Kingdom
TOTAL AREA: 917.43 sq ft • LIVING AREA: 917.43 sq ft • FLOORS: 2 • ROOMS: 6



▼ Photos/Kitchen



ESTERS
ESTATE AGENTS

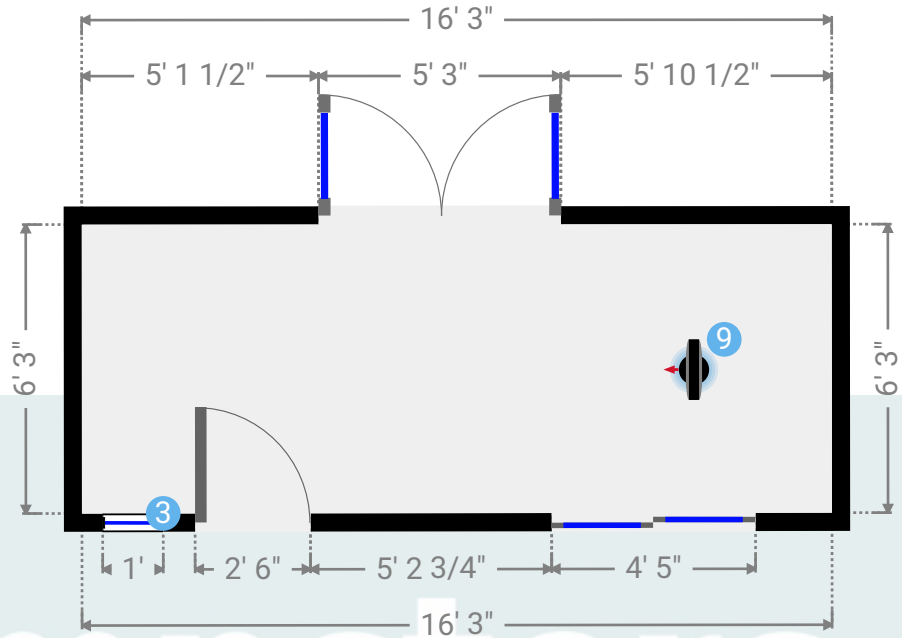
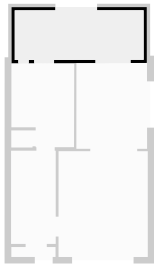
32 Windsor Avenue

32 Windsor Ave, RM16 2UB Grays, England, United Kingdom
TOTAL AREA: 917.43 sq ft • LIVING AREA: 917.43 sq ft • FLOORS: 2 • ROOMS: 6



▼ Lean To Ground Floor

WIDTH: 16' 3" • LENGTH: 6' 3"
AREA: 101.65 sq ft • PERIMETER: 45' 1/4"



▼ Lean To/Ground Floor

Photos
2 Photos (see photos page)

9 360 PANORAMA

Photo
1 Photo (see photos page)



32 Windsor Avenue

32 Windsor Ave, RM16 2UB Grays, England, United Kingdom
TOTAL AREA: 917.43 sq ft • LIVING AREA: 917.43 sq ft • FLOORS: 2 • ROOMS: 6

Kempsters
ESTATE AGENTS

▼ Photos/Lean To



Kempsters
ESTATE AGENTS

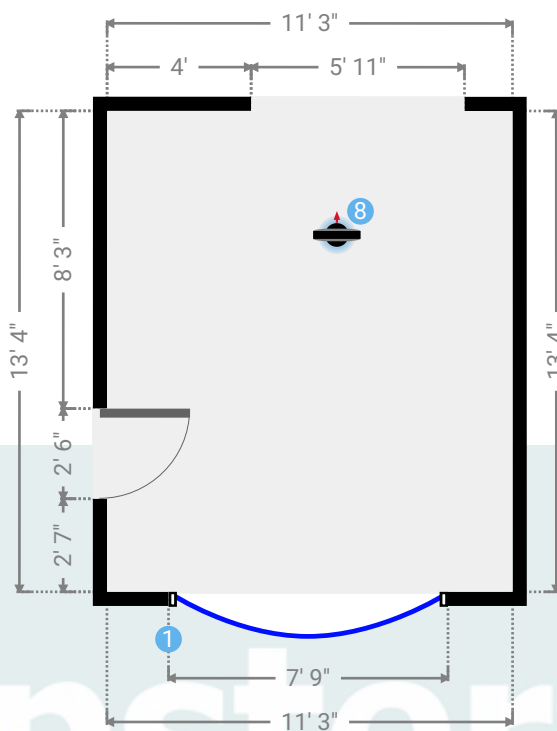
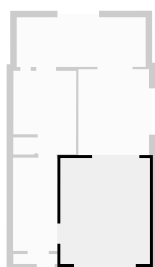
32 Windsor Avenue

32 Windsor Ave, RM16 2UB Grays, England, United Kingdom
TOTAL AREA: 917.43 sq ft • LIVING AREA: 917.43 sq ft • FLOORS: 2 • ROOMS: 6



▼ Lounge Ground Floor

WIDTH: 11' 3" • LENGTH: 13' 4"
AREA: 149.97 sq ft • PERIMETER: 49' 2"



▼ Lounge /Ground Floor

Photos
3 Photos (see photos page)

1 BOW WINDOW

Height
4' 11"

Distance to Floor
2' 3"



8 360 PANORAMA

Photo
1 Photo (see photos page)



32 Windsor Avenue

32 Windsor Ave, RM16 2UB Grays, England, United Kingdom
TOTAL AREA: 917.43 sq ft • LIVING AREA: 917.43 sq ft • FLOORS: 2 • ROOMS: 6



▼ Photos/Lounge



Kempsters
ESTATE AGENTS

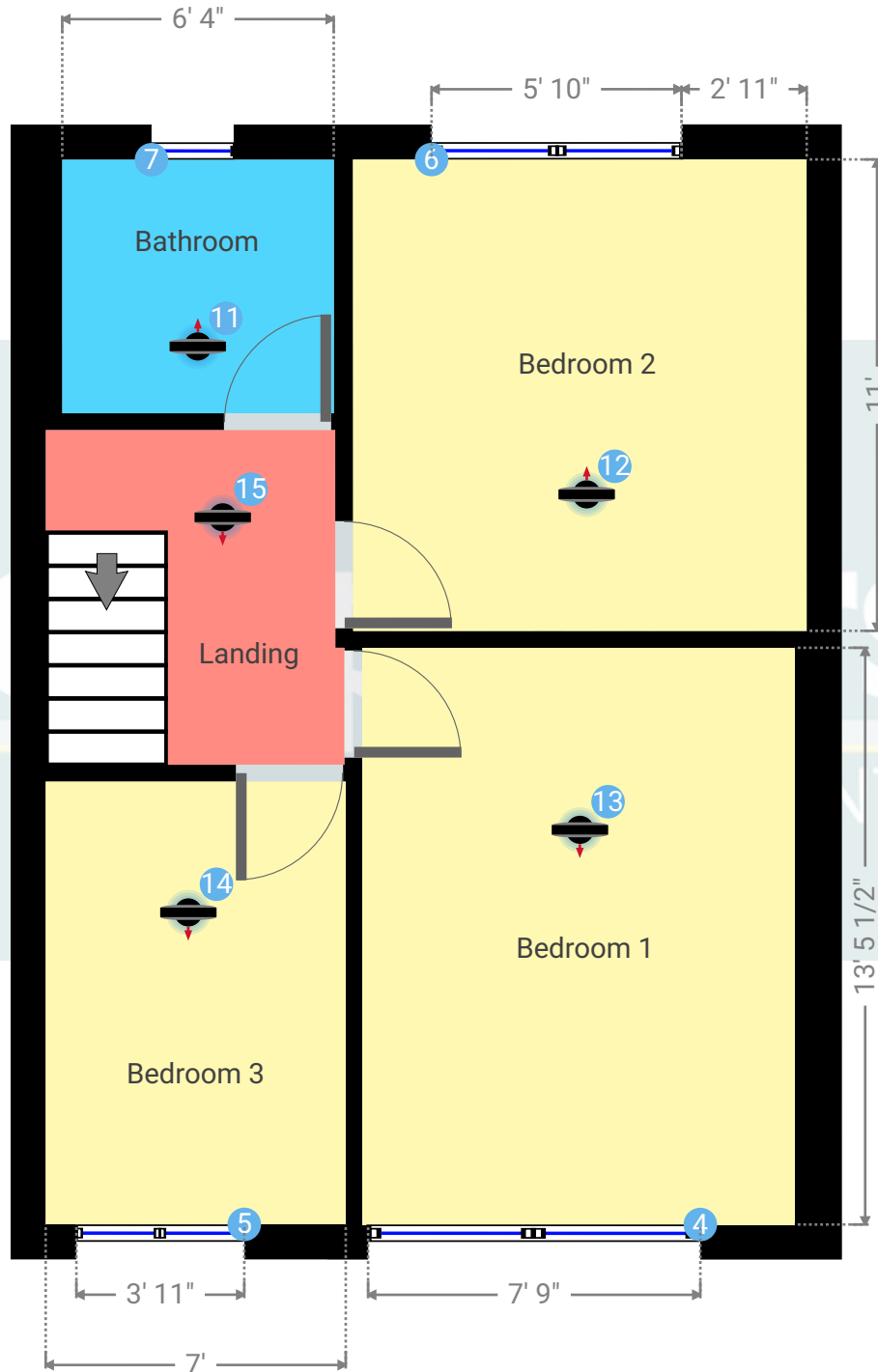
32 Windsor Avenue

32 Windsor Ave, RM16 2UB Grays, England, United Kingdom
TOTAL AREA: 917.43 sq ft • LIVING AREA: 917.43 sq ft • FLOORS: 2 • ROOMS: 6



▼ 1st Floor

TOTAL AREA: 414.89 sq ft • LIVING AREA: 414.89 sq ft • ROOMS: 3



Kempsters Estate Agents take no responsibility for any error, omission, misstatement or use of data shown. This plan is for illustrative purposes only and whilst every attempt has been made to ensure the accuracy of the floorplan shown, all measurements, positioning, fixtures, fittings and any other data shown are an approximate interpretation for illustrative purposes only. These plans are the property of Kempsters Estate Agents Ltd and must not be reproduced in any form without our permission.



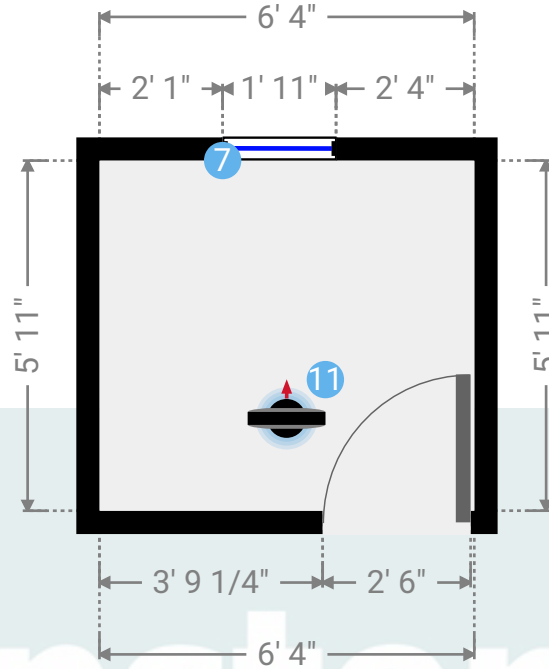
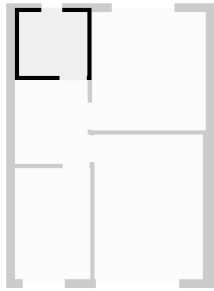
32 Windsor Avenue

32 Windsor Ave, RM16 2UB Grays, England, United Kingdom
TOTAL AREA: 917.43 sq ft • LIVING AREA: 917.43 sq ft • FLOORS: 2 • ROOMS: 6



▼ Bathroom 1st Floor

WIDTH: 6' 4" • LENGTH: 5' 11"
AREA: 37.48 sq ft • PERIMETER: 24' 6"



▼ Bathroom/1st Floor

Photo
1 Photo (see photos page)

7 CASEMENT WINDOW

Height
3' 10"

Distance to Floor
2' 10"



11 360 PANORAMA

Photo
1 Photo (see photos page)



32 Windsor Avenue

32 Windsor Ave, RM16 2UB Grays, England, United Kingdom
TOTAL AREA: 917.43 sq ft • LIVING AREA: 917.43 sq ft • FLOORS: 2 • ROOMS: 6

▼ Photos/Bathroom



Kempsters

ESTATE AGENTS

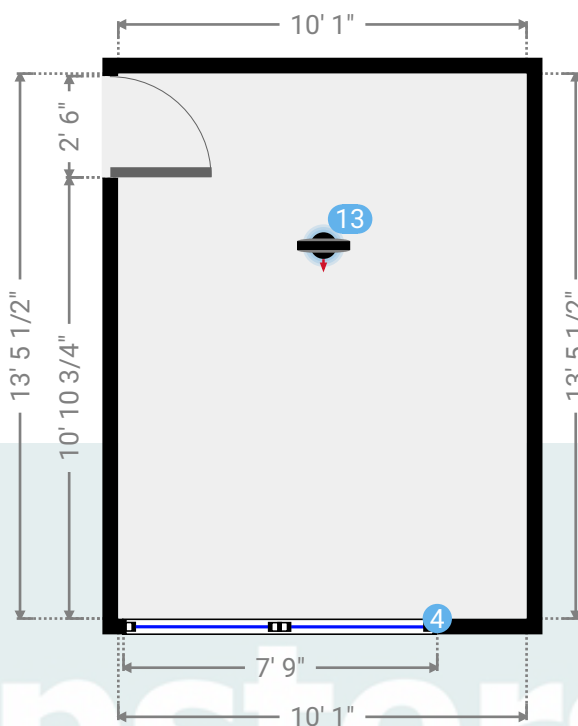
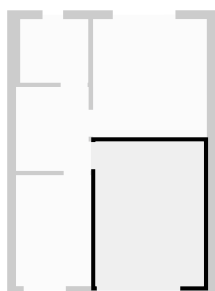
32 Windsor Avenue

32 Windsor Ave, RM16 2UB Grays, England, United Kingdom
TOTAL AREA: 917.43 sq ft • LIVING AREA: 917.43 sq ft • FLOORS: 2 • ROOMS: 6



▼ Bedroom 1 1st Floor

WIDTH: 10' 1" • LENGTH: 13' 5 1/2"
AREA: 135.71 sq ft • PERIMETER: 47' 1"



▼ Bedroom 1/1st Floor

Photos
2 Photos (see photos page)

4 FRENCH WINDOW

Height
3' 11"

Distance to Floor
2' 11"



13 360 PANORAMA

Photo
1 Photo (see photos page)



32 Windsor Avenue

32 Windsor Ave, RM16 2UB Grays, England, United Kingdom
TOTAL AREA: 917.43 sq ft • LIVING AREA: 917.43 sq ft • FLOORS: 2 • ROOMS: 6



▼ Photos/Bedroom 1



Kempsters
ESTATE AGENTS

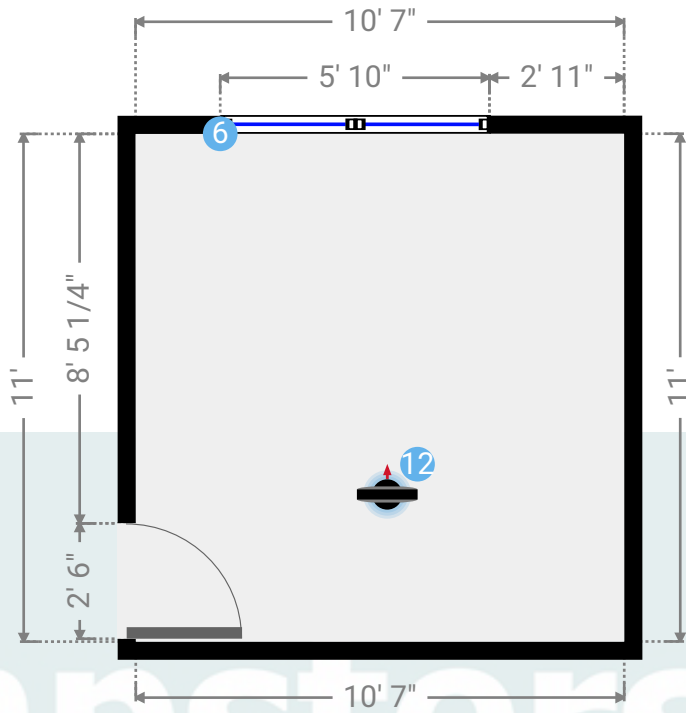
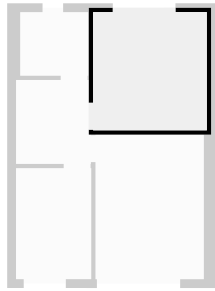
32 Windsor Avenue

32 Windsor Ave, RM16 2UB Grays, England, United Kingdom
TOTAL AREA: 917.43 sq ft • LIVING AREA: 917.43 sq ft • FLOORS: 2 • ROOMS: 6



▼ Bedroom 2 1st Floor

WIDTH: 10' 7" • LENGTH: 11'
AREA: 116.42 sq ft • PERIMETER: 43' 2"



▼ Bedroom 2/1st Floor

Photos
2 Photos (see photos page)

6 FRENCH WINDOW

Height
3' 11"

Distance to Floor
2' 11"



12 360 PANORAMA

Photo
1 Photo (see photos page)



32 Windsor Avenue

32 Windsor Ave, RM16 2UB Grays, England, United Kingdom
TOTAL AREA: 917.43 sq ft • LIVING AREA: 917.43 sq ft • FLOORS: 2 • ROOMS: 6



▼ Photos/Bedroom 2



Kempsters
ESTATE AGENTS

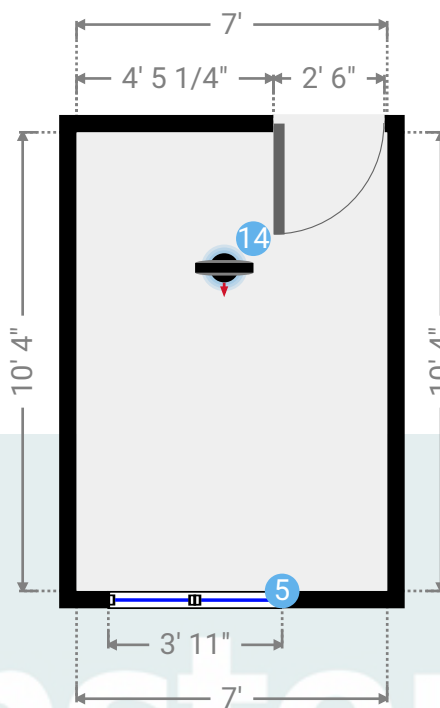
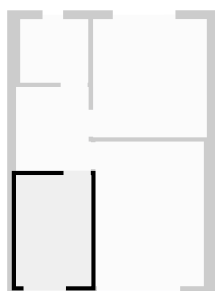
32 Windsor Avenue

32 Windsor Ave, RM16 2UB Grays, England, United Kingdom
TOTAL AREA: 917.43 sq ft • LIVING AREA: 917.43 sq ft • FLOORS: 2 • ROOMS: 6



▼ Bedroom 3 1st Floor

WIDTH: 7' • LENGTH: 10' 4"
AREA: 72.33 sq ft • PERIMETER: 34' 8"



▼ Bedroom 3/1st Floor

Photo
1 Photo (see photos page)

5 FRENCH WINDOW

Height
3' 11"

Distance to Floor
2' 11"



14 360 PANORAMA

Photo
1 Photo (see photos page)



32 Windsor Avenue

32 Windsor Ave, RM16 2UB Grays, England, United Kingdom
TOTAL AREA: 917.43 sq ft • LIVING AREA: 917.43 sq ft • FLOORS: 2 • ROOMS: 6

▼ Photos/Bedroom 3



Kempsters
ESTATE AGENTS

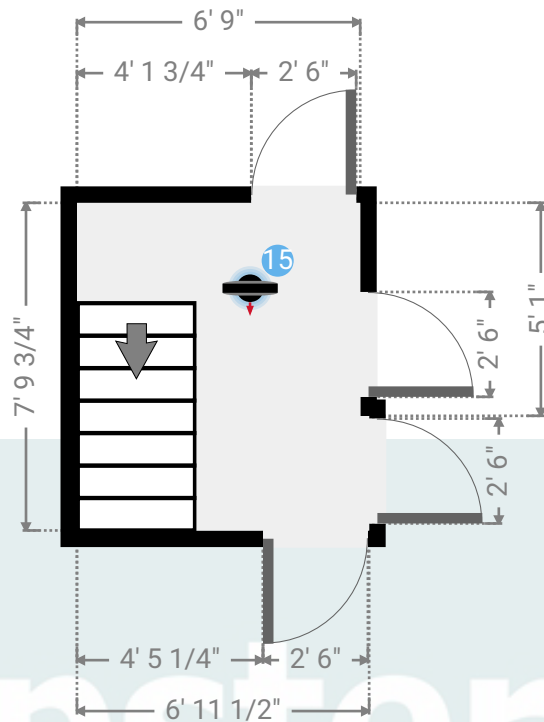
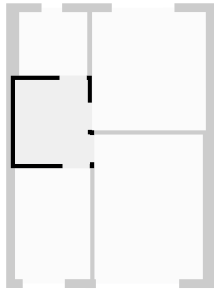
32 Windsor Avenue

32 Windsor Ave, RM16 2UB Grays, England, United Kingdom
TOTAL AREA: 917.43 sq ft • LIVING AREA: 917.43 sq ft • FLOORS: 2 • ROOMS: 6



▼ Landing 1st Floor

WIDTH: 6' 11 1/2" • LENGTH: 7' 9 3/4"
AREA: 53.30 sq ft • PERIMETER: 29' 6 1/2"



▼ Landing /1st Floor

Photos
2 Photos (see photos page)

15 360 PANORAMA

Photo
1 Photo (see photos page)

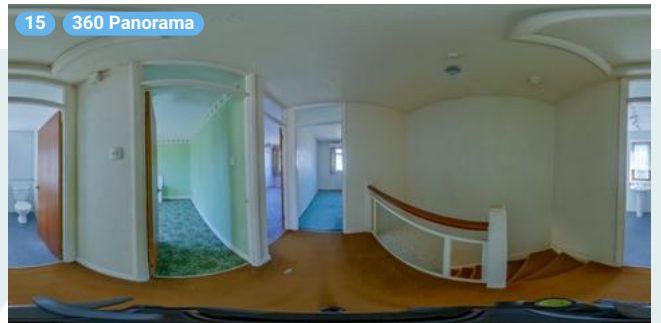
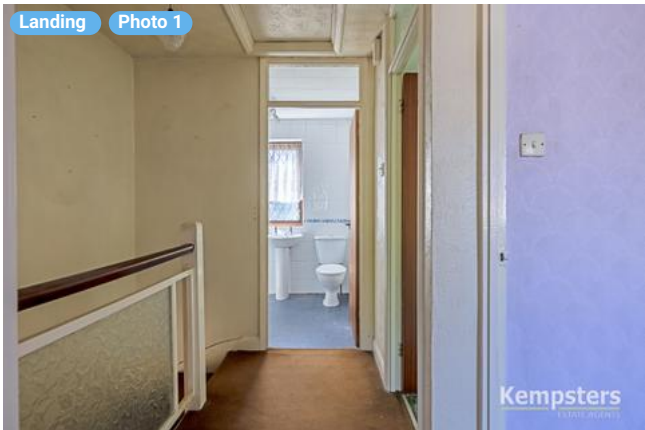


32 Windsor Avenue

32 Windsor Ave, RM16 2UB Grays, England, United Kingdom
TOTAL AREA: 917.43 sq ft • LIVING AREA: 917.43 sq ft • FLOORS: 2 • ROOMS: 6



▼ Photos/Landing



Kempsters
ESTATE AGENTS