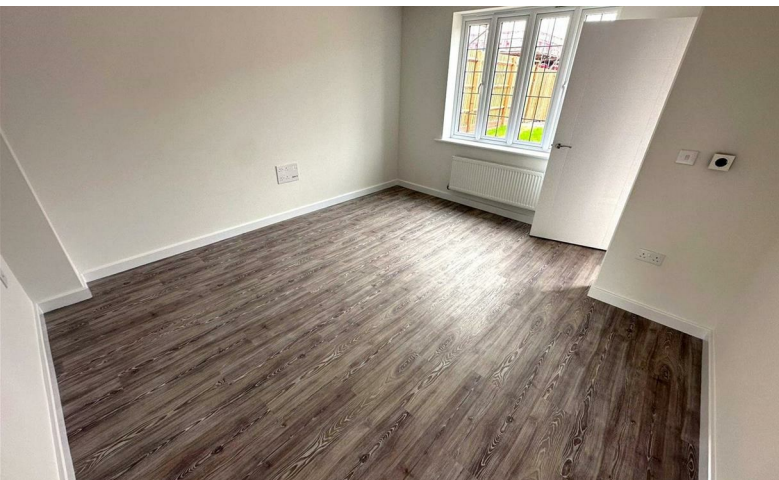


Rice
hamberlains
ESTATE AGENTS LLP



£1,200 Per Month

4 Blackwell Mews, Northfield, Birmingham, West Midlands, B31 5FX

4 Blackwell Mews, Northfield, Birmingham, West Midlands, B31 5FX

****STUNNING NEW BUILD, TWO BEDROOM END OF TERRACE** AVAILABLE NOW**** Rice Chamberlains are delighted to market this beautiful brand-new build house, situated in the beautiful new home development located in Northfield. The property is a short drive to Longbridge High Street and shopping development in one direction, or Northfield High Street in the other. The property is also a short drive to the M5, and the Lickey Hills Country Park. The Property comprises as follows; entrance hallway, double main bedroom en-suite, modern bathroom, spacious Living/dining area and modern kitchen with French doors accessing the garden. The property also benefits from a driveway. To arrange a viewing, please call our Lettings Team or visit our website for more information.

Credit References and Deposit

Prospective tenants will be required to complete a credit referencing application payable whether successful or not. Prior to taking occupation of the property you will be required to pay a deposit of 1½ times the monthly rent, the first months rent in advance and an administration fee.

Directions

