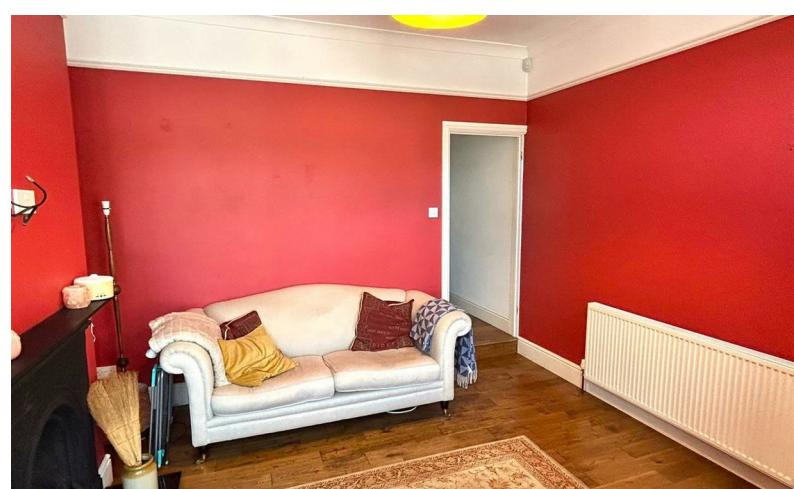


**Rice**  
**hamberlains**  
ESTATE AGENTS LLP



**£1,200 Per Month**

43 Ashmore Road, Cotteridge, Birmingham, West Midlands, B30 2HB



## 43 Ashmore Road, Cotteridge, Birmingham, West Midlands, B30 2HB

**\*CHARACTER HOME IN PRIME LOCATION!\*** Situated on this much sought-after road in the heart of Cotteridge is this lovely, two bedroom period mid-terrace home which is packed with charm and period features. You couldn't be in a better position with everything the area has to offer on your doorstep including only being a short stroll into Cotteridge park, two train stations at Bournville and Kings Norton close at hand, Cotteridge's amenities alongside having Stirchley's vibrant high street not too far away either alongside some great local schools. The accommodation offered comprises; living room, open plan dining room and modern kitchen and a lovely rear garden. To the first floor there are two good bedrooms and a four piece bathroom. To book your viewing please call our lettings team! EPC Rating D, Council Tax Band B

---

### Credit References and Deposit

Prospective tenants will be required to complete a credit referencing application payable whether successful or not. Prior to taking occupation of the property you will be required to pay a deposit of 1½ times the monthly rent, the first months rent in advance and an administration fee.

### Directions

