



WESTFIELD, HAWKSLADE, AYLESBURY

£290,000
FREEHOLD

A well presented two bedroom semi-detached home in the popular Hawkslade area. The property features a downstairs cloakroom, spacious living room and a well equipped kitchen. Upstairs, there are two double bedrooms and a family bathroom. Externally, the home benefits from allocated parking and a private rear garden.



WESTFIELD

• HAWKSLADE • TWO DOUBLE
BEDROOMS • SEMI DETACHED
HOUSE • WALKING DISTANCE TO
HOSPITAL • ALLOCATED
PARKING • ENCLOSED REAR
GARDEN • GOOD ROAD
LINKS • DOWNSTAIRS CLOAKROOM



LOCATION

Situated on the southern outskirts of the town with good access towards London, High Wycombe and the M40. This well-regarded area is situated within walking distance of Stoke Mandeville Hospital and borders open countryside. There are two schools within short walking distance as-well as a community centre and convenience store on the estate.

ACCOMMODATION

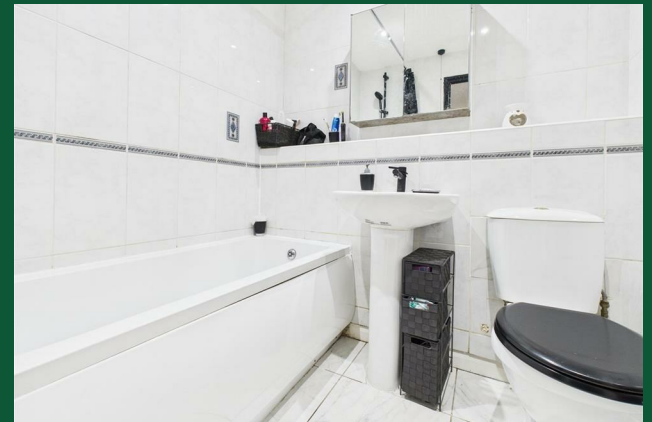
Upon entering, you are welcomed by an entrance hall, leading to a cloakroom, ideal for guests. The kitchen is well-equipped with an inset gas hob, oven, and cooker hood, along with space for a washing machine.

The living room is a cozy retreat, featuring a charming fireplace that serves as a focal point, perfect for relaxing or entertaining.

Upstairs, the property boasts two double bedrooms, with the master bedroom benefiting from built-in wardrobes, providing ample storage. The bathroom completes the first floor, offering both functionality and style.

Externally, the property features a private rear garden. Additionally, the home benefits from two allocated parking spaces, ensuring convenience for residents and visitors alike.

WESTFIELD





Ground Floor



Floor 1

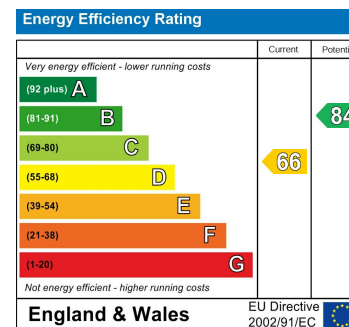
Approximate total area⁽¹⁾
615.03 ft²
57.14 m²

(1) Excluding balconies and terraces

While every attempt has been made to ensure accuracy, all measurements are approximate, not to scale. This floor plan is for illustrative purposes only.

Calculations are based on RICS IPMS 3C standard.

GIRAFFE360



Agents Note: Whilst every care has been taken to prepare these particulars, they are for guidance purposes only. All measurements are approximate and are for general guidance purposes only and whilst every care has been taken to ensure their accuracy, they should not be relied upon and potential buyers/tenants are advised to recheck the measurements

George David & Co
46 High Street
Aylesbury
HP20 1SE

01296 393 393
info@georgedavid.co.uk
www.georgedavid.co.uk

