



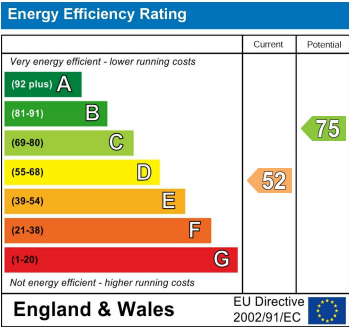
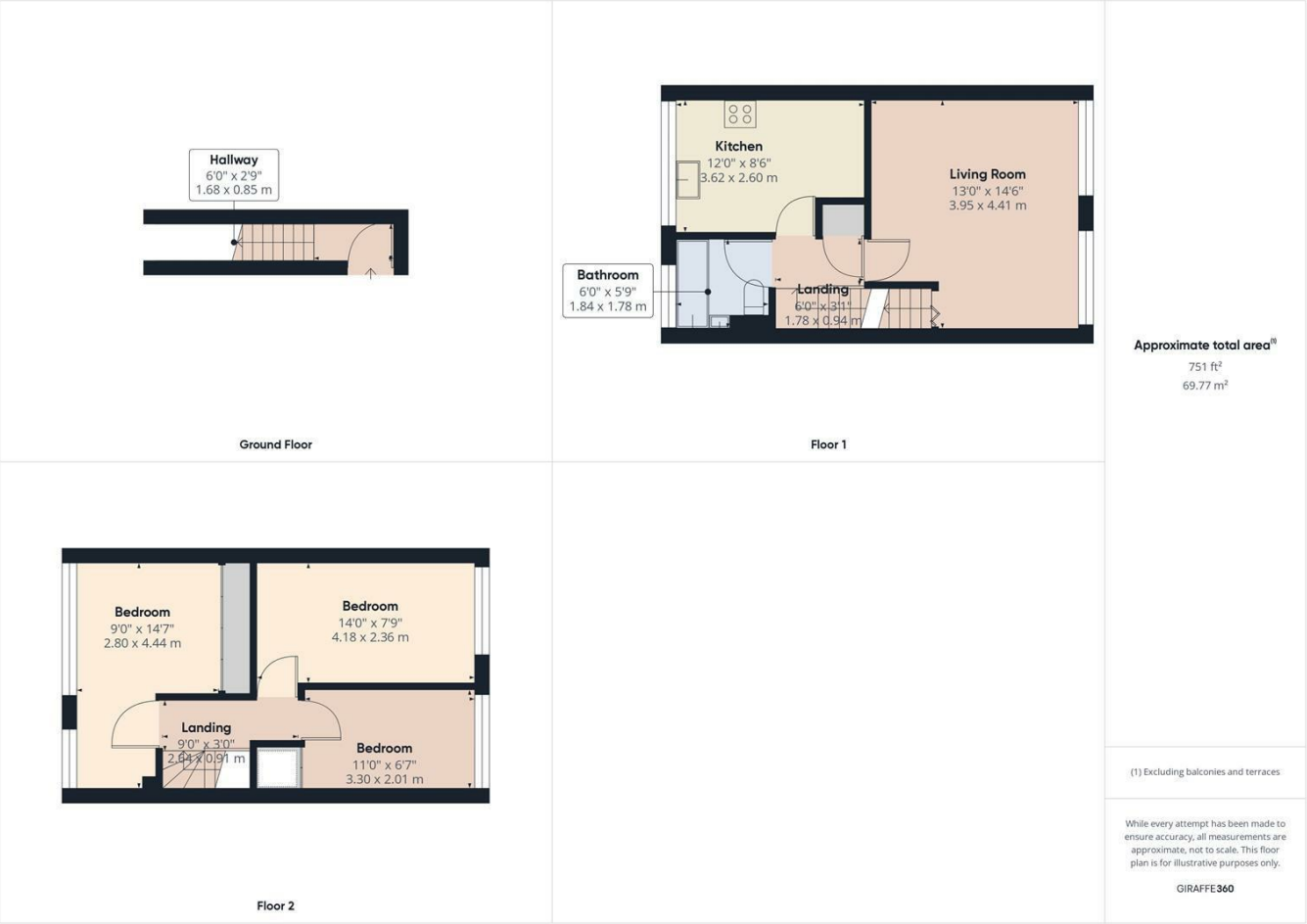
163B LONG MEADOW

AYLESBURY, HP21 7EB

£270,000
LEASEHOLD

A superb three bedroom maisonette in the highly desirable location of Bedgrove, Aylesbury. Set over two floors this spacious property offers a newly fitted kitchen, bathroom, living room, three good sized bedrooms, private garden and driveway parking for 2 cars. Viewing is highly recommended.





Agents Note: Whilst every care has been taken to prepare these particulars, they are for guidance purposes only. All measurements are approximate and are for general guidance purposes only and whilst every care has been taken to ensure their accuracy, they should not be relied upon and potential buyers/tenants are advised to recheck the measurements

George David & Co
46 High Street
Aylesbury
HP20 1SE

01296 393 393
info@georgedavid.co.uk
www.georgedavid.co.uk

