



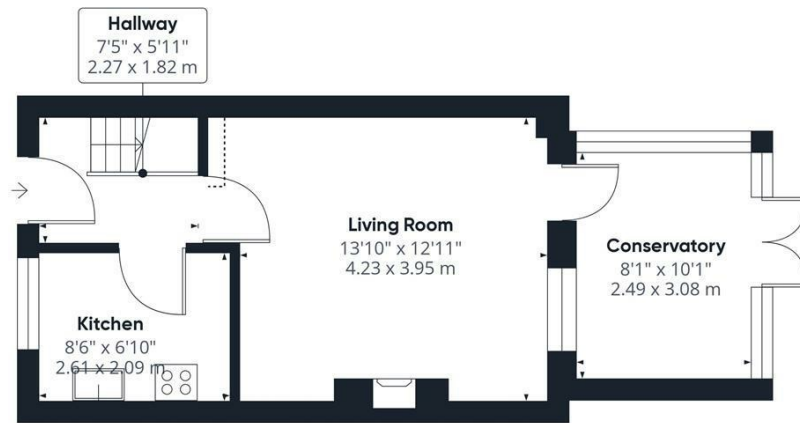
31 HORTON CLOSE

AYLESBURY, HP19 7FD

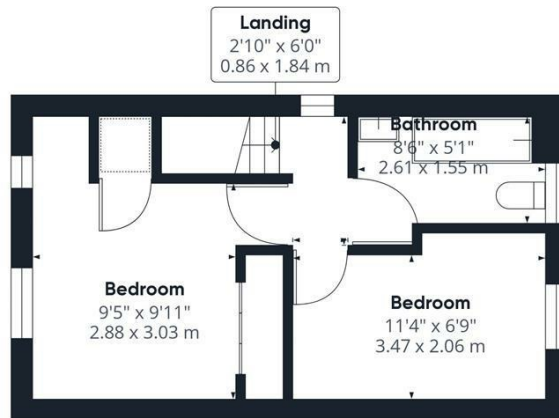
£298,000
FREEHOLD

*** NO ONWARD CHAIN *** A well presented two bedroom house located in a popular area, offering comfortable living spaces and modern features. In brief the property offers two double bedrooms, bathroom, living room, kitchen, conservatory, garden and driveway parking. Viewing is highly recommended on this home.





Ground Floor



Floor 1

Approximate total area[®]
643.68 ft²
59.8 m²

Reduced headroom
2.28 ft²
0.21 m²

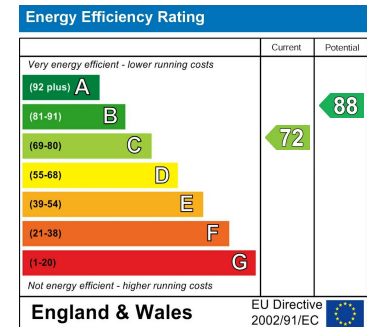
(1) Excluding balconies and terraces

Reduced headroom
Below 5 ft/1.5 m

While every attempt has been made to ensure accuracy, all measurements are approximate, not to scale. This floor plan is for illustrative purposes only.

Calculations are based on RICS IPMS 3C standard.

GIRAFFE360



Agents Note: Whilst every care has been taken to prepare these particulars, they are for guidance purposes only. All measurements are approximate and are for general guidance purposes only and whilst every care has been taken to ensure their accuracy, they should not be relied upon and potential buyers/tenants are advised to recheck the measurements

George David & Co
46 High Street
Aylesbury
HP20 1SE

01296 393 393
info@georgedavid.co.uk
www.georgedavid.co.uk

