



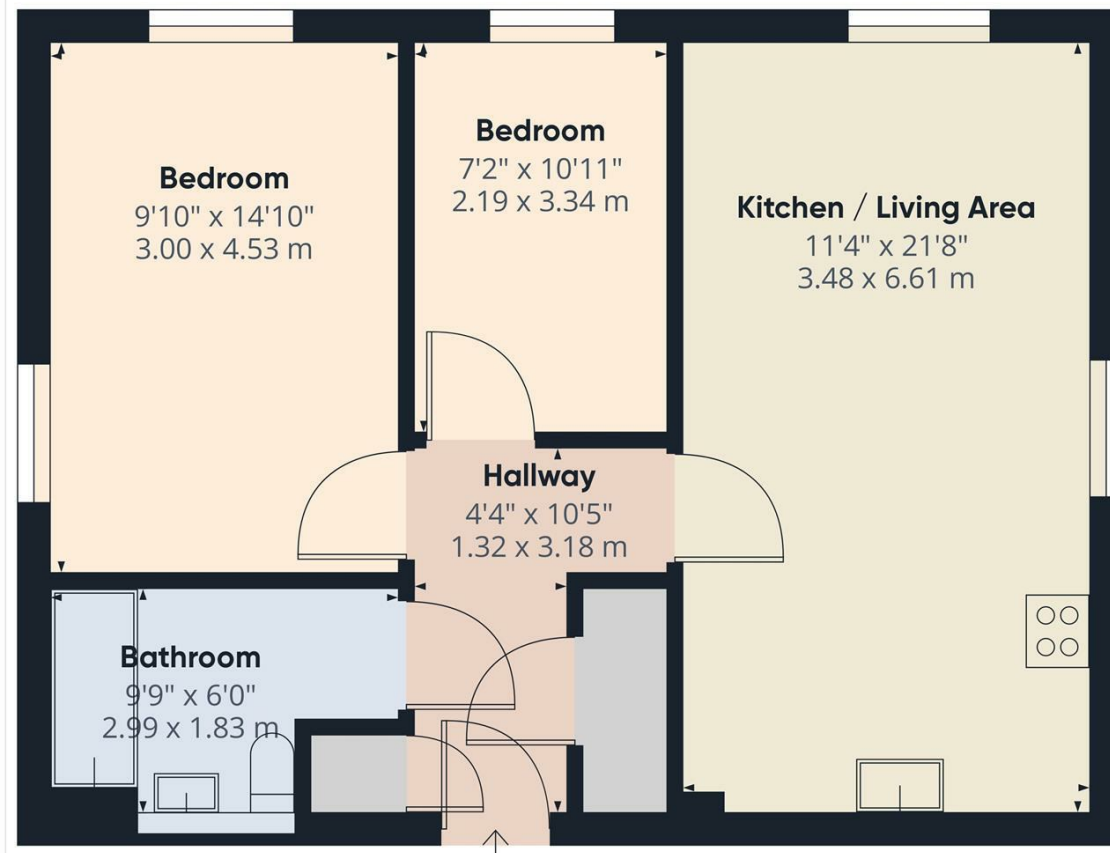
117 CHAPPELL CLOSE

AYLESBURY, HP19 9QB

£200,000
LEASEHOLD

TWO BEDROOM GROUND FLOOR FLAT - WALKING DISTANCE OF THE TOWN CENTRE - APPROXIMATELY ONE MILE FROM THE TRAIN STATION - NO UPPER CHAIN. A very nice flat situated in at the end of a no through road with allocated parking and a modern fitted kitchen.



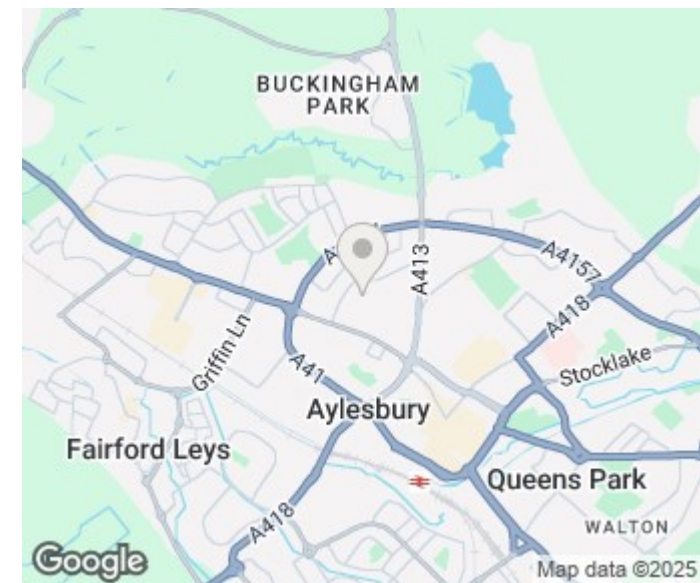


Approximate total area¹⁾
617.06 ft²
57.33 m²

(1) Excluding balconies and terraces

While every attempt has been made to ensure accuracy, all measurements are approximate, not to scale. This floor plan is for illustrative purposes only.

GIRAFFE360



Energy Efficiency Rating		
	Current	Potential
Very energy efficient - lower running costs		
(92 plus) A		
(81-91) B		
(69-80) C	71	71
(55-68) D		
(39-54) E		
(21-38) F		
(1-20) G		
Not energy efficient - higher running costs		
England & Wales	EU Directive 2002/91/EC	

Agents Note: Whilst every care has been taken to prepare these particulars, they are for guidance purposes only. All measurements are approximate and are for general guidance purposes only and whilst every care has been taken to ensure their accuracy, they should not be relied upon and potential buyers/tenants are advised to recheck the measurements

George David & Co
46 High Street
Aylesbury
HP20 1SE

01296 393 393
info@georgedavid.co.uk
www.georgedavid.co.uk

