

Castlehead Properties



0/1 27 NETHERHILL ROAD, PAISLEY. PA3 4RH.

THIS TWO BEDROOM GROUND FLOOR FLAT IS SITUATED IN THE GALLOWHILL AREA OF PAISLEY WITH EASY ACCESS TO PAISLEY TOWN CENTRE. PROPERTY HAS 2 BEDROOMS, LOUNGE, BATHROOM WITH SHOWER, AND BENEFITS FROM DOUBLE GLAZING AND GAS CENTRAL HEATING. SECURITY DOOR ENTRY. PRIVATE GARDEN TO FRONT AND COMMUNAL REAR. AMPLE ON STREET PARKING. CLOSE TO ALL LOCAL AMENITIES, EXCELLENT SCHOOLS, AND REGULAR PUBLIC TRANSPORT LINKS AND EASY ACCESS TO M8 MOTORWAY NETWORK.. IDEAL FIRST TIME PURCHASE OR BUY TO LET PROPERTY.



- 2 BEDROOM FLAT
- COMMUNAL REAR DRYING AREA
- COUNCIL TAX BAND A
- ON STREET PARKING
- POPULAR GALLOWHILL AREA OF TOWN
- SECURE ENTRY
- GOOD RENTAL POTENTIAL
- CLOSE TO LOCAL SHOPS AND BUS

OFFERS OVER £62,000

**0/1 27 NETHERHILL ROAD,
PAISLEY. PA3 4RH.**

OFFERS OVER £62,000

LOUNGE 14' 2" x 13' 6" (4.32M x 4.12M)

OVERLOOKING THE FRONT ELEVATION THIS ROOM IS PRESENTED WITH A LIGHT BROWN CARPET AND NEUTRAL DECOR WITH DADO RAIL POSITIONED 3/4 HEIGHT.

KITCHEN 11' 7" x 8' 9" (3.52M x 2.67M)

FITTED TRIANGULAR SHAPED KITCHEN. WALL AND BASE UNITS WITH LIGHT GREY STONE EFFECT WORKTOP. UPGRADING MAY BE REQUIRED TO SUIT PERSONAL TASTE AND PREFERENCE.

ENTRANCE HALL 16' 3" x 8' 10" (4.95M x 2.68M)

ACCESSED VIA A UPVC DOOR THE HALLWAY GIVES ACCESS TO ALL APARTMENTS. NEUTRAL DECOR WITH LIGHT BROWN CARPET. UTILITY METERS ARE LOCATED IN HALLWAY CUPBOARD AND SMOKE DETECTOR IS PRESENT.

BEDROOM 1 12' 7" x 10' 1" (3.84M x 3.08M)

OVERLOOKING THE REAR ELEVATION THIS IS ANOTHER GOOD SIZED DOUBLE BEDROOM WITH A BROWN CARPET AND SHALLOW STORAGE CUPBOARD.

BEDROOM 2 10' 8" x 8' 11" (3.25M x 2.73M)

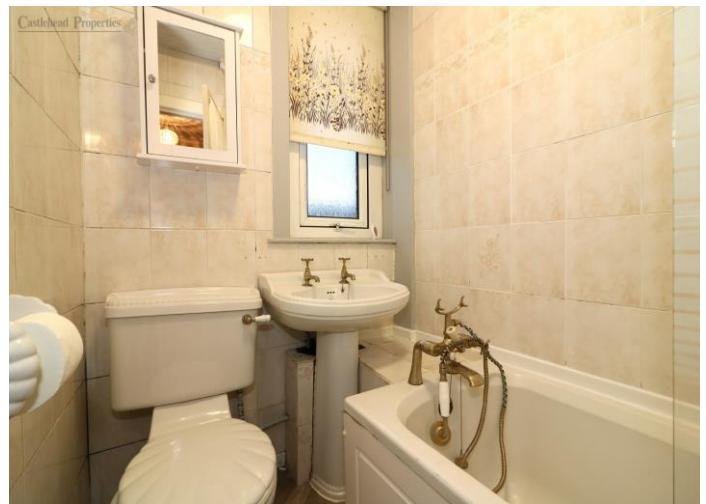
THIS IS A GOOD SIZED DOUBLE BEDROOM OVERLOOKING THE FRONT ELEVATION OF THE PROPERTY. BROWN CARPET WITH NEUTRAL DECOR. STORAGE CUPBOARD HOUSING COMBINATION GAS FIRED ALPHA BOILER.

BATHROOM 6' 11" x 4' 9" (2.10M x 1.45M)

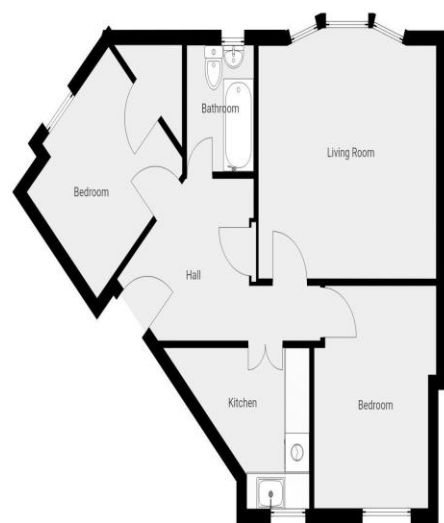
3 PIECE WHITE BATHROOM SUITE WITH TILED WALLS AND ELECTRIC SHOWER. PARQUET EFFECT GREY VINYL FLOORING.

REAR GARDEN

WELL MAINTAINED REAR GARDEN AND DRYING AREA



Castlehead Properties



THIS FLOORPLAN IS PROVIDED WITHOUT WARRANTY OF ANY KIND. CASTLEHEAD PROPERTIES (LET) LTD DISCLAIMS ANY WARRANTY INCLUDING, WITHOUT LIMITATION, SATISFACTORY QUALITY OR ACCURACY OF DIMENSIONS.

As a regulated business we are required to comply with the "The Money Laundering, Terrorist Financing and Transfer Funds (Information on the Payer) Regulations 2017. Intending purchasers will be asked to produce documentation to satisfy these requirements on acceptance of a formal offer. These will include proof of Identification, proof of address and proof of funds to facilitate the purchase including deposit and any loan funds. Your cooperation in this is greatly appreciated.

DISCLAIMER - WHILST WE ENDEAVOR TO MAKE THESE PARTICULARS AS ACCURATE AS POSSIBLE, THEY DO NOT FORM PART OF ANY CONTRACT ON OFFER, NOR ARE THEY GUARANTEED. MEASUREMENTS ARE APPROXIMATE AND IN MOST CASES ARE TAKEN WITH A DIGITAL/SONIC MEASURING DEVICE AND ARE TAKEN AT THE WIDEST POINT. WE HAVE NOT TESTED THE ELECTRICITY, GAS OR WATER SERVICES OR ANY APPLIANCES. PHOTOGRAPHS ARE REPRODUCED FOR GENERAL INFORMATION AND IT MUST NOT BE INFERRED THAT ANY ITEM IS INCLUDED FOR SALE WITH THE PROPERTY. IF THERE IS ANY PART OF THIS THAT YOU FIND MISLEADING OR SIMPLY WISH CLARIFICATION ON ANY POINT, PLEASE CONTACT OUR OFFICE IMMEDIATELY WHEN WE WILL ENDEAVOR TO ASSIST YOU IN ANY WAY POSSIBLE



OFFERS OVER £62,000