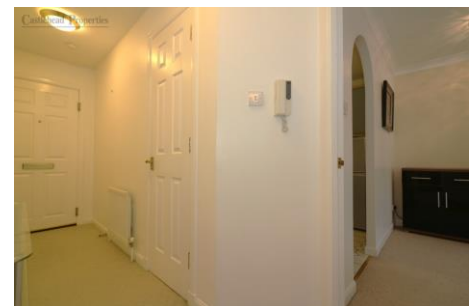




143 ELLON WAY, PAISLEY. PA3 4BQ.

THIS LOVELY ONE BEDROOM SECOND FLOOR FLAT IS SITUATED IN THE MODERN RESIDENTIAL LOCALE OF ELLON WAY, PAISLEY CLOSE TO ALL LOCAL AMENITIES AND A SHORT WALK TO THE TOWN CENTRE. THE BUILDING HAS BEEN WELL MAINTAINED AND IS ACCESSED VIA SECURE DOOR ENTRY. THE FLAT IS IN GOOD ORDER INTERNALLY WITH DOUBLE GLAZING AND WET ELECTRIC HEATING. PRIVATE RESIDENTS' PARKING. IDEAL FIRST TIME PURCHASE, EARLY VIEWING IS ADVISED TO FULLY APPRECIATE THIS LOVELY FLAT.



- MODERN RESIDENTIAL ESTATE
- RESIDENTS' PARKING
- LANDSCAPE SURROUNDS
- GOOD TRANSPORT LINKS
- ONE BEDROOM UPPER FLAT
- DOUBLE GLAZING
- CLOSE TO ALL AMENITIES
- TENURE - ABSOLUTE OWNERSHIP

OFFERS OVER £85,000

Castlehead Properties



Properties



OFFERS OVER £85,000