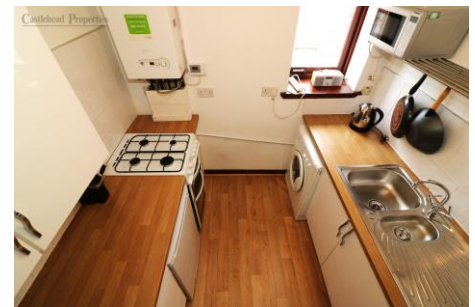


Castlehead Properties



3 HARLAND STREET, GLASGOW. G14 0DH.

THIS ONE BEDROOM TOP FLOOR FLAT IS SITUATED IN A TRADITIONAL FOUR STOREY RED SANDSTONE TENEMENT BUILDING, SITUATED IN A POPULAR AND ESTABLISHED, PRIVATE RESIDENTIAL AREA IN THE SCOTSTOUN DISTRICT OF GLASGOW WHICH LIES TO THE WEST OF THE CITY. CLOSE TO ALL AMENITIES AND FACILITIES INCLUDING SHOPS, SCHOOLS AND PUBLIC TRANSPORT LINKS. THE PROPERTY IS IN GOOD ORDER INTERNALLY AND BENEFITS FROM GAS CENTRAL HEATING AND TIMBER FRAME DOUBLE GLAZING. SECURE DOOR ENTRY, ON STREET PARKING, COMMUNAL REAR GARDEN AND BIN STORAGE. IDEAL FIRST TIME PURCHASE OR BUY TO LET INVESTMENT WITH GOOD RENTAL YIELD.



- ONE BED TOP FLOOR FLAT
- GAS CENTRAL HEATING
- SECURE DOOR ENTRY
- ALL FURNISHINGS INCLUDED
- TRADITIONAL TENEMENT
- TIMBER FRAME DOUBLE GLAZING
- COMMUNAL REAR AREA
- CLOSE TO ALL LOCAL AMENITIES

OFFERS OVER £80,000

ENTRANCE HALLWAY 8' 7" x 7' 6" (2.62M x 2.28M)

L-SHAPED ENTRANCE HALL GIVES ACCESS TO ALL ROOMS IN THE FLAT. DARK VARNISH WOODSTAIN WOODWORK THROUGHOUT THE PROPERTY. OAK EFFECT LAMINATE FLOORING. GAS AND ELECTRIC METERS.

LOUNGE 16' 6" x 10' 1" (5.04M x 3.07M)

SPACIOUS LOUNGE WITH BAY WINDOW TO FRONT. OAK EFFECT LAMINATE FLOORING. AMPLE SPACE FOR DINING TABLE AND CHAIRS.

KITCHEN 7' 5" x 6' 7" (2.25M x 2.0M)

GLOSS WHITE WALL AND BASE STORAGE UNITS WITH SOFT CLOSING, BUTCHER BLOCK EFFECT WORK SURFACE AND TILED SPLASHBACK. 4 BURNER FREE STANDING GAS HOB, UNDERCOUNT FRIDGE/FREEZER AND WASHING MACHINE, STAINLESS STEEL SINK UNIT. OAK EFFECT VINYL FLOORING. WINDOW FACES OVER THE SIDE OF PROPERTY.

BEDROOM 14' 2" x 10' 5" (4.31M x 3.17M)

DOUBLE BEDROOM WITH WINDOW TO THE REAR. OAK EFFECT LAMINATE FLOORING. BUILT-IN STORAGE AND SHELVES.

BATHROOM 13' 3" x 5' 10" (4.03M x 1.77M)

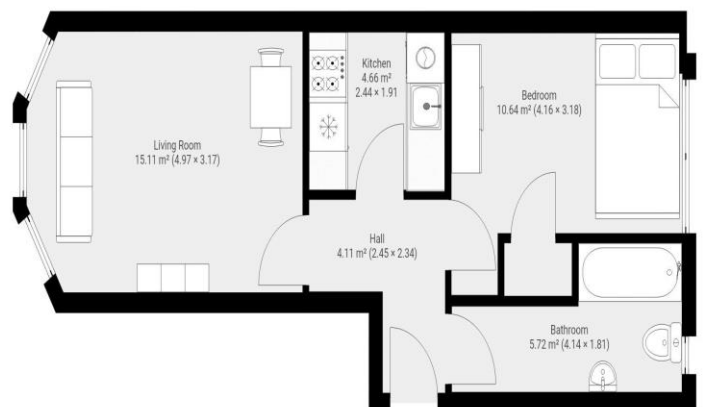
THREE PIECE SUITE WITH OVERHEAD ELECTRIC SHOWER UNIT. SHOWER CURTAIN AND RAIL. WALL TILING AROUND BATH AND SHOWER AREA. WOOD PANELLED CEILING. REAR FACING FROSTED GLASS WINDOW.

COMMUNAL REAR GARDEN

WELL MAINTAINED REAR GARDEN AND DRYING AREA.



Castlehead Properties



THIS FLOORPLAN IS PROVIDED WITHOUT WARRANTY OF ANY KIND. CASTLEHEAD PROPERTIES WILL NOT DISCLAIM ANY WARRANTY INCLUDING, WITHOUT LIMITATION, SATISFACTORY QUALITY OR ACCURACY OF DIMENSIONS.

As a regulated business we are required to comply with the "The Money Laundering, Terrorist Financing and Transfer Funds (Information on the Payer) Regulations 2017. Intending purchasers will be asked to produce documentation to satisfy these requirements on acceptance of a formal offer. These will include proof of identification, proof of address and proof of funds to facilitate the purchase including deposit and any loan funds. Your cooperation in this is greatly appreciated.

DISCLAIMER - WHILST WE ENDEAVOR TO MAKE THESE PARTICULARS AS ACCURATE AS POSSIBLE, THEY DO NOT FORM PART OF ANY CONTRACT OR OFFER, NOR ARE THEY GUARANTEED. MEASUREMENTS ARE APPROXIMATE AND IN MOST CASES ARE TAKEN WITH A DIGITAL/SONIC MEASURING DEVICE AND ARE TAKEN AT THE WIDEST POINT. WE HAVE NOT TESTED THE ELECTRICITY, GAS OR WATER SERVICES OR ANY APPLIANCES. PHOTOGRAPHS ARE REPRODUCED FOR GENERAL INFORMATION AND IT MUST NOT BE INFERRED THAT ANY ITEM IS INCLUDED FOR SALE WITH THE PROPERTY. IF THERE IS ANY PART OF THIS THAT YOU FIND MISLEADING OR SIMPLY WISH CLARIFICATION ON ANY POINT, PLEASE CONTACT OUR OFFICE IMMEDIATELY WHEN WE WILL ENDEAVOR TO ASSIST YOU IN ANY WAY POSSIBLE.



OFFERS OVER £80,000