



**52 Roe Parc, St. Asaph, Denbighshire,  
LL17 0LD**

**£229,000**

 2  1  2  C

**EPC - C71    Council Tax Band - D    Tenure - Freehold**



# Roe Parc, St. Asaph

## 2 Bedrooms - Bungalow - Detached

In Need of Modernisation! No Chain...A two bedroom detached bungalow, situated in a sought after location close to local schools, shops, restaurants, Glan Clwyd Hospital and the access onto the A55 which provides links to Llandudno, Chester, Liverpool and beyond. The property is situated on a good sized plot offering gardens to the front with ample off street parking, garage and a private rear garden enjoying a sunny aspect. A must view to fully appreciate the property. EPC Rating C 71.



### Accommodation

uPVC door with glass panel adjacent, leads into:

### Entrance Porch

### Hallway

Having loft access and radiator

### Dining Area

9'11" x 7'11" (3.02 x 2.41)

Having radiator, power point and uPVC window to the side elevation

### Lounge

7'11" x 16'10" (2.41 x 5.13)

Having feature fireplace with inset gas fire, power points and uPVC window to the front elevation

### Kitchen

9'2" x 7'10" (2.79 x 2.39)

Having a range of wall, drawer and base units with surface over, Belfast sink, range cooker with extractor hood over, tiled floor, uPVC window to the side elevation and uPVC door leading to the rear garden

### Utility room

9'10" x 7'10" (3.00 x 2.39)

Having uPVC window to the rear elevation, tiled floor, plumbing for washing machine, integrated fridge and freezer and tiled floor

### Bathroom

6'5" x 5'7" (1.96 x 1.70)

In white a three piece suite comprising low flush w.c, panelled bath, low flush w.c, radiator, fully tiled walls and floor. Obscure uPVC window to the side elevation

### Bedroom One

12'6" x 9'9" (3.81 x 2.97)

Having a range of fitted wardrobes, radiator and uPVC French doors leading to the rear garden

### Bedroom Two

11'7" x 9'9" (3.53 x 2.97)

Having a range of fitted wardrobes, radiator and uPVC French doors leading to the rear garden



## Garage

16'3" x 8'5" (4.95 x 2.57)

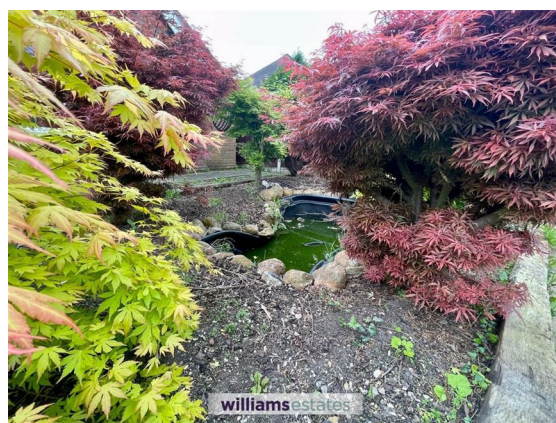
Having up & over doors, power and uPVC door giving access to the rear garden

## Outside

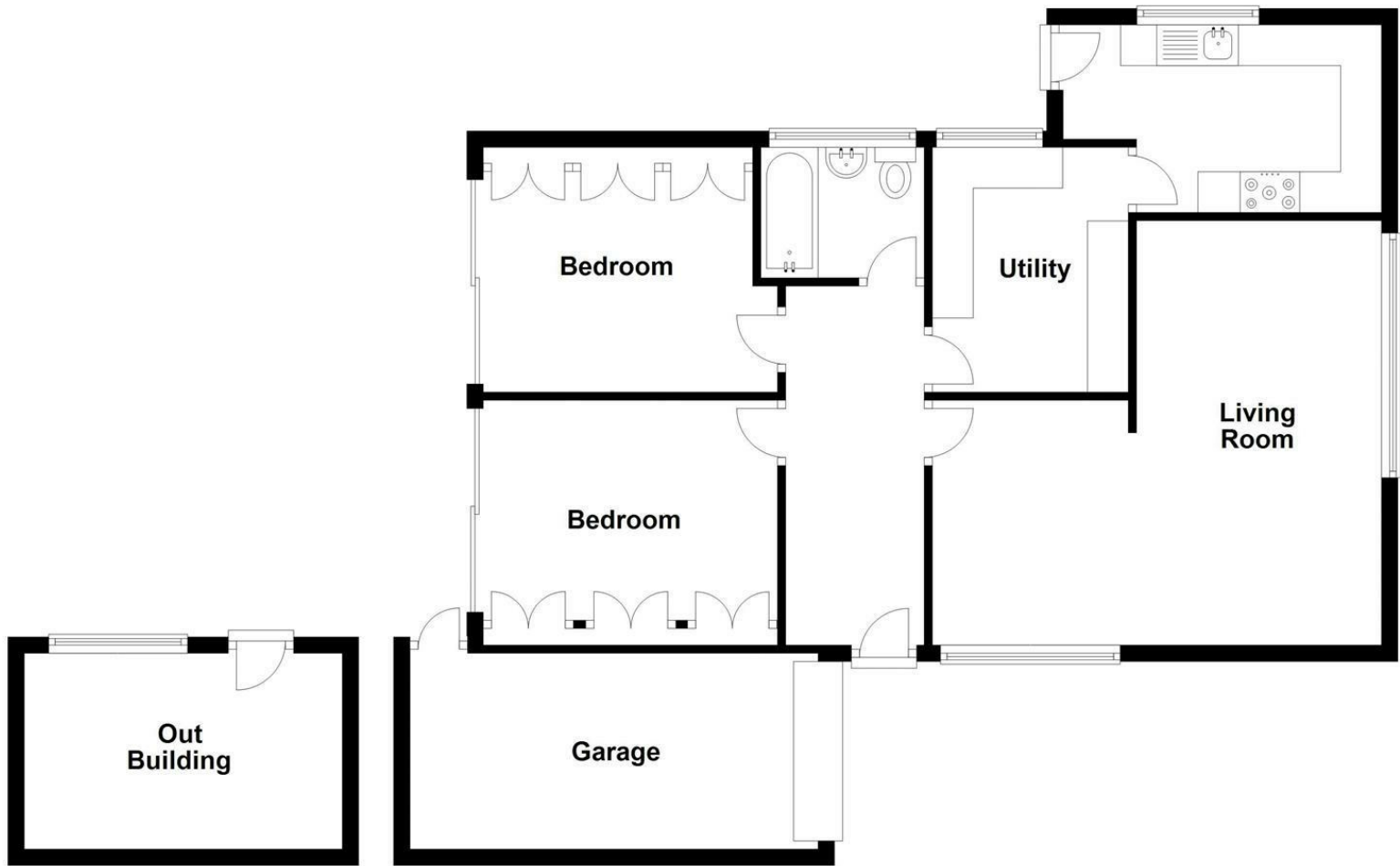
The property is approached by wrought iron gates, which leads to a concrete driveway providing ample off street parking and in turn leading to the garage with the front garden having an array of nature shrubs. Access into the rear garden via a timber gate located at the side of the garage. The rear garden being mainly laid to lawn with decorative stocked borders, brick built store, bounded by fencing which offers privacy and a sunny aspect.

## Description

No Chain. A two bedroom detached bungalow, situated in a sought after location close to local schools, shops, restaurants, Glan Clwyd Hospital and the access onto the A55 which provides links to Llandudno, Chester, Liverpool and beyond. The accommodation comprises living room, kitchen/ utility, bathroom and two bedrooms. The property is situated on a good sized plot offering gardens to the front with ample off street parking, garage and a private rear garden enjoying a sunny aspect. Further benefits include uPVC double glazing throughout and gas central. A must view to fully appreciate the property. EPC Rating TBC.







**Ground Floor**

Approx. 95.2 sq. metres (1025.1 sq. feet)

Total area: approx. 95.2 sq. metres (1025.1 sq. feet)

**Energy Efficiency Rating**

	Current	Potential
<i>Very energy efficient - lower running costs</i>		
(92 plus) <b>A</b>		<b>86</b>
(81-91) <b>B</b>		
(69-80) <b>C</b>	<b>71</b>	
(55-68) <b>D</b>		
(39-54) <b>E</b>		
(21-38) <b>F</b>		
(1-20) <b>G</b>		
<i>Not energy efficient - higher running costs</i>		
<b>England &amp; Wales</b>	EU Directive 2002/91/EC	

Call us on  
01745 817417

[Denbigh@williamsestates.com](mailto:Denbigh@williamsestates.com)

Agents Note: Whilst every care has been taken to prepare these particulars, they are for guidance purposes only. All measurements are approximate and are for general guidance purposes only and whilst every care has been taken to ensure their accuracy, they should not be relied upon and potential buyers are advised to recheck the measurements themselves.