

£230,000

27 Richmond Road

Gosport, Hampshire, PO12 3QJ

An ideal family starter home, this delightful Victorian property is conveniently located just a short walk from Leesland Park — a beautiful green space perfect for dog walking and children's play. Situated within the highly sought-after Bay House School catchment area, the home also benefits from easy access to local amenities including a convenience store, regular bus routes, and the War Memorial Hospital. The property boasts spacious, character-filled rooms, a classic bay window, two generously sized double bedrooms, an upstairs bathroom, and a desirable southerly facing 55ft garden. Don't miss the opportunity to view this charming home. Please contact the Gosport team to arrange your internal viewing. Our phone lines are open until 8PM for your convenience.





ENTRANCE HALLWAY

LOUNGE 12' 7" x 10' 11" (3.86m x 3.33m)

DINING ROOM 11' 11" x 11' 5" (3.64m x 3.50m)

KITCHEN 8' 10" x 8' 5" (2.70m x 2.58m)

STAIRS AND LANDING

BEDROOM ONE 11' 11" x 10' 6" (3.65m x 3.22m)

BEDROOM TWO 11' 11" x 9' 2" (3.65m x 2.81m)

BATHROOM 8' 7" x 7' 6" (2.62m x 2.30m)

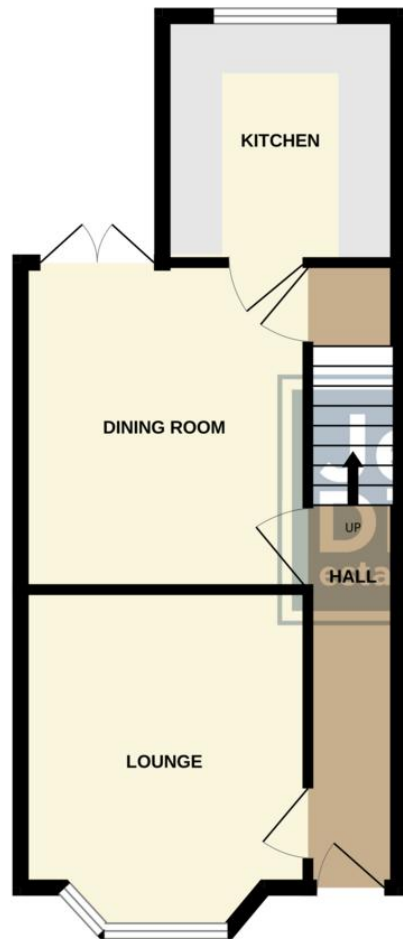
GARDEN 55' 9" (17m

AGENTS NOTES Council Tax Band B

Freehold



GROUND FLOOR



1ST FLOOR

**LOCAL AUTHORITY**

Gosport

TENURE

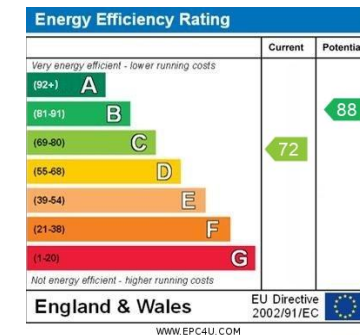
Freehold

COUNCIL TAX BAND

Band B

VIEWINGS

By prior appointment only



Agents Note: Whilst every care has been taken to prepare these particulars, they are for guidance purposes only. All measurements are approximate and are for general guidance purposes only and whilst every care has been taken to ensure their accuracy, they should not be relied upon and potential buyers/tenants are advised to recheck the measurements

**Jeffries
Dibbens**
estate and letting agents

OFFICE ADDRESS

126 High Street, Gosport,
Hampshire, PO12 1DU

CONTACT

02392 602 155
gosport@dibbensproperty.co.uk
www.jdea.co.uk