

£380,000

Testcombe Road

Alverstoke, Gosport, Hampshire, PO12 2EL

This spacious detached family home is located on a sizeable plot in the highly sought-after and picturesque area of Alverstoke, Gosport and is offered with no onward chain. Just a short walk from the stunning Stokes Bay seafront and within the catchment area of well-regarded schools with this charming property offering immense potential boasting period features two spacious reception rooms, a downstairs cloakroom, three generously sized bedrooms, and a large rear garden. Additional highlights include off-road parking, a garage, and a host of other desirable features. Properties in this area are rarely available, making this a truly unique opportunity. Don't miss out – contact our Gosport team today to arrange your internal viewing. Phone lines are open until 8pm.





ENTRANCE HALLWAY

LOUNGE 15' 10" x 11' 11" (4.83m x 3.64m)

DINING ROOM 12' 3" x 10' 9" (3.74m x 3.30m)

KITCHEN 12' 11" x 6' 11" (3.95m x 2.13m)

CONSERVATORY 11' 1" x 6' 6" (3.40m x 1.99m)

STAIRS AND LANDING

BEDROOM ONE 15' 10" x 11' 10" (4.84m x 3.61m)

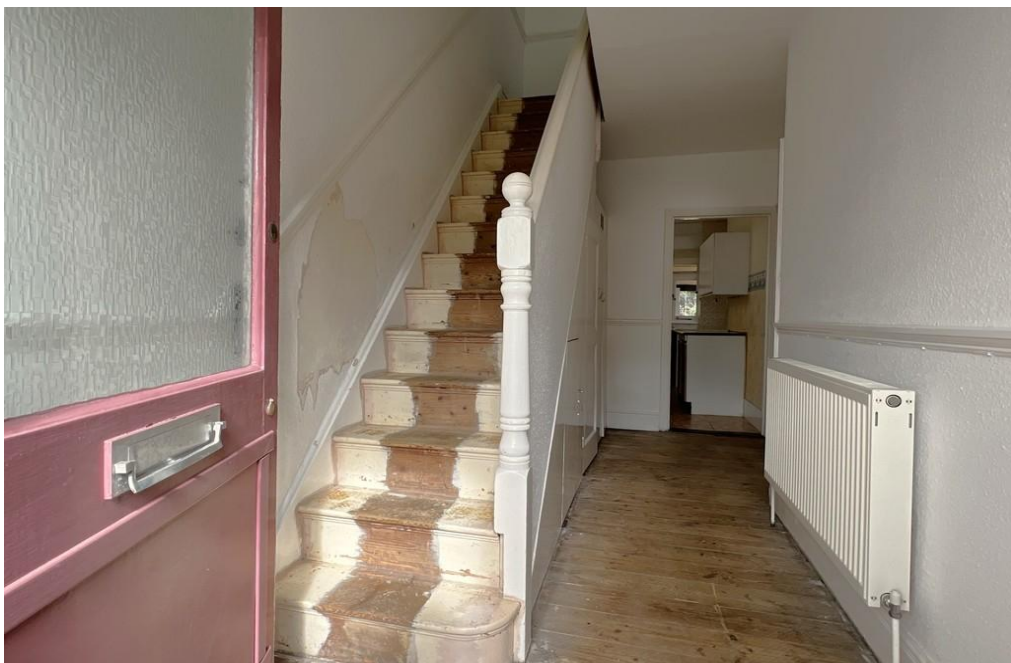
BEDROOM TWO 12' 4" x 10' 8" (3.76m x 3.27m)

BEDROOM THREE 6' 11" x 9' 1" (2.11m x 2.77m)

BATHROOM 5' 9" x 5' 6" (1.77m x 1.70m)

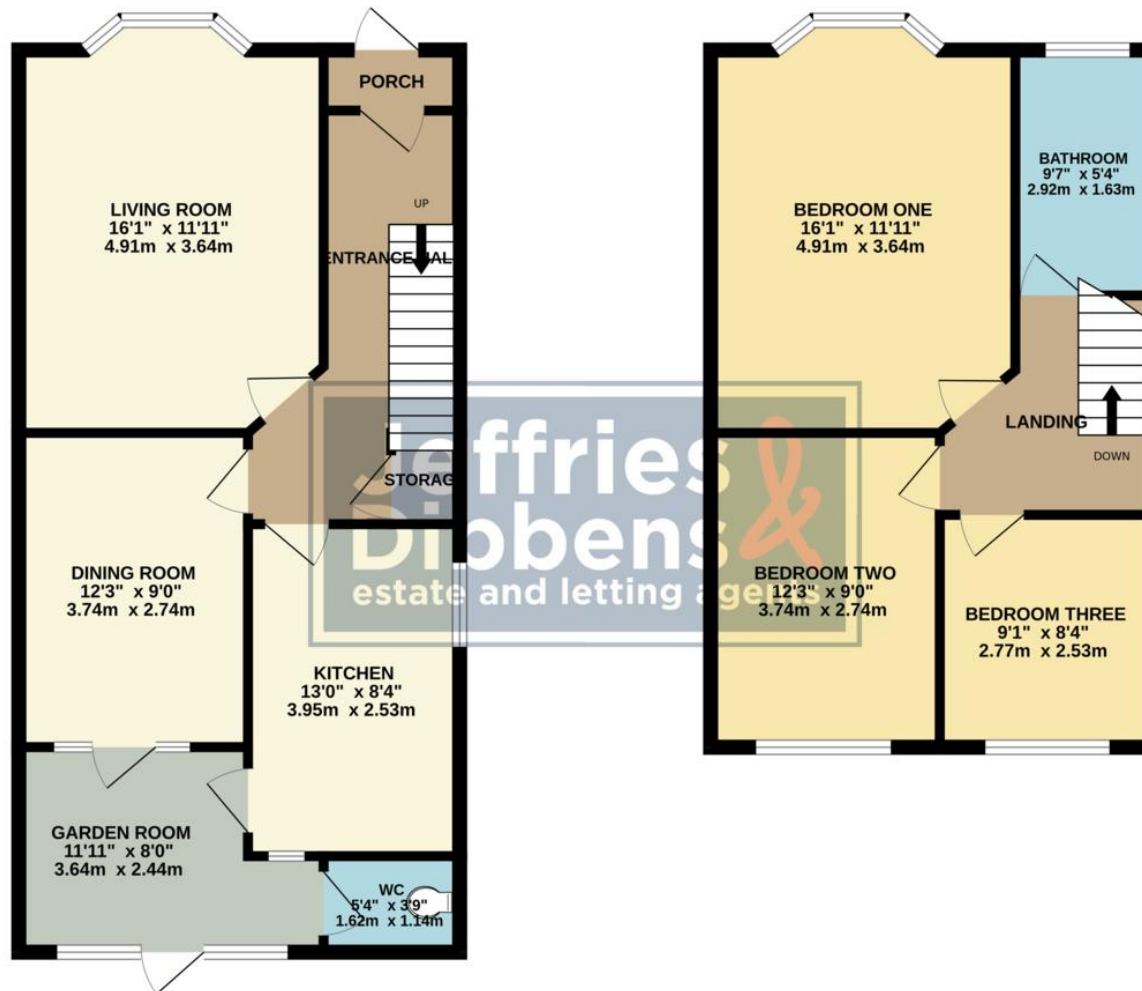
GARDEN

GARAGE



GROUND FLOOR

1ST FLOOR

**LOCAL AUTHORITY**

Gosport Borough Council

TENURE

Freehold

COUNCIL TAX BAND

Band E

VIEWINGS

By prior appointment only

EPC Awaited

Agents Note: Whilst every care has been taken to prepare these particulars, they are for guidance purposes only. All measurements are approximate and are for general guidance purposes only and whilst every care has been taken to ensure their accuracy, they should not be relied upon and potential buyers/tenants are advised to recheck the measurements

**Jeffries
Dibbens &**
estate and letting agents

OFFICE ADDRESS

126 High Street, Gosport,
Hampshire, PO12 1DU

CONTACT

02392 602 155
gosport@dibbensproperty.co.uk
www.jdea.co.uk