



£450,000
7 Gilkicker Road

Alverstoke, Gosport, PO12 2UE

PROPERTY SUMMARY

We are delighted to offer to the market this extended four bedroom semi-detached family home situated in the sought-after location of Alverstoke, Gosport. Situated just a stone's throw from the Solent foreshore and stunning Gilkicker golf course, the list of benefits attached to this property are endless. Boasting; a spacious lounge, dining room, downstairs bathroom, home office, four bedrooms and an upstairs family shower room internally. As well as off road parking, garage and an enclosed rear garden, externally. This property is in our opinion a must view, so please call our Gosport office to book your internal inspection and avoid missing out.





ENTRANCE HALL

OFFICE 10' 7" x 6' 11" (3.23m x 2.11m)

LOUNGE 12' 3" x 10' 3" (3.74m x 3.14m)

DINING ROOM 10' 7" x 9' 2" (3.23m x 2.80m)

KITCHEN 13' 2" x 12' 4" (4.03m x 3.76m)

DOWNSTAIRS BATHROOM 10' 3" x 5' 5" (3.14m x 1.67m)

STAIRS & LANDING

BEDROOM 4 9' 1" x 6' 2" (2.78m x 1.88m)

BEDROOM 1 12' 7" x 7' 9" (3.84m x 2.37m)

BEDROOM 2 23' 1" x 8' 9" (7.06m x 2.68m)

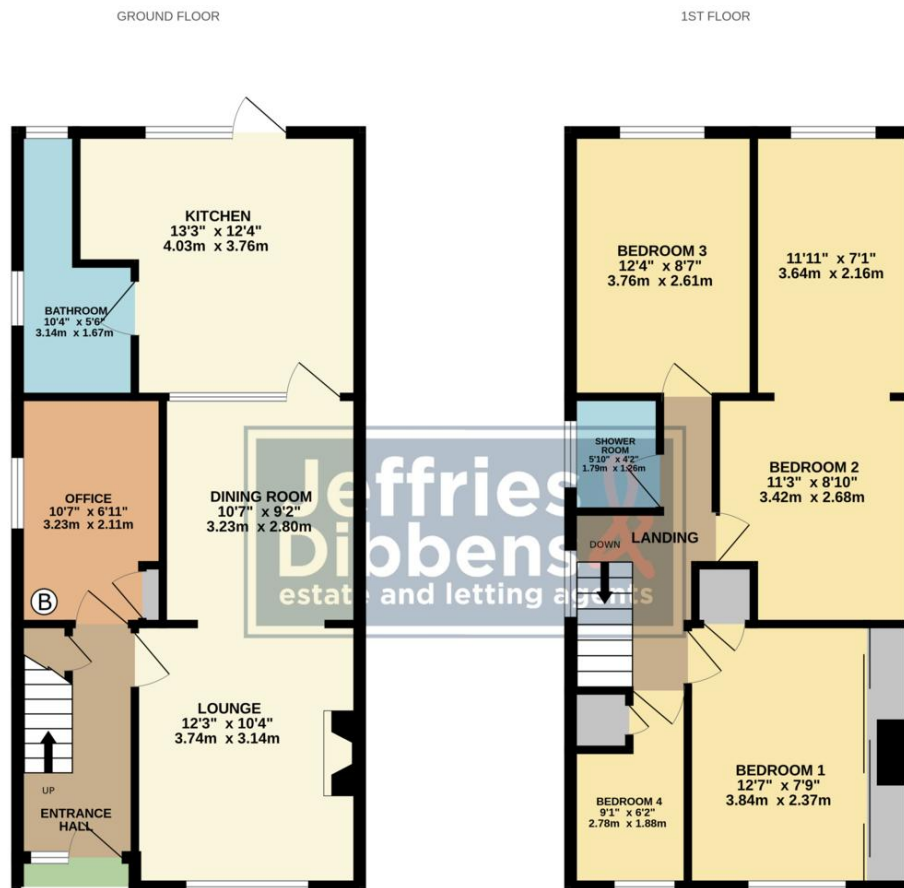
BEDROOM 3 12' 4" x 8' 6" (3.76m x 2.61m)

SHOWER ROOM 5' 6" x 4' 1" (1.70m x 1.26m)

AGENT NOTES

- Freehold
- EPC Rating TBC
- Council Tax Band D





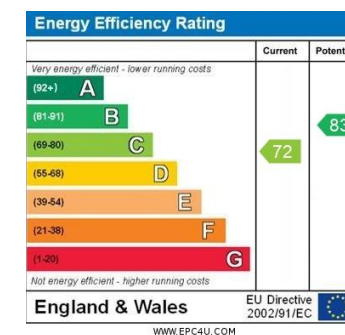
Whilst every attempt has been made to ensure the accuracy of the floorplan contained here, measurements of doors, windows, rooms and any other items are approximate and no responsibility is taken for any error, omission or mis-statement. This plan is for illustrative purposes only and should be used as such by any prospective purchaser. The services, systems and appliances shown have not been tested and no guarantee as to their operability or efficiency can be given.
Made with Metagix 12/2025

LOCAL AUTHORITY
Gosport Borough Council

TENURE
Freehold

COUNCIL TAX BAND
Band D

VIEWINGS
By prior appointment only



Agents Note: Whilst every care has been taken to prepare these particulars, they are for guidance purposes only. All measurements are approximate and are for general guidance purposes only and whilst every care has been taken to ensure their accuracy, they should not be relied upon and potential buyers/tenants are advised to recheck the measurements

Jeffries Dibbens
estate and letting agents

OFFICE ADDRESS
126 High Street, Gosport,
Hampshire, PO12 1DU

CONTACT
02392 602 155
gosport@dibbensproperty.co.uk
www.jdea.co.uk