



GUIDE PRICE  
**£300,000 - £320,000**  
**27 Southcroft Road**  
Gosport, PO12 3LA

## PROPERTY SUMMARY

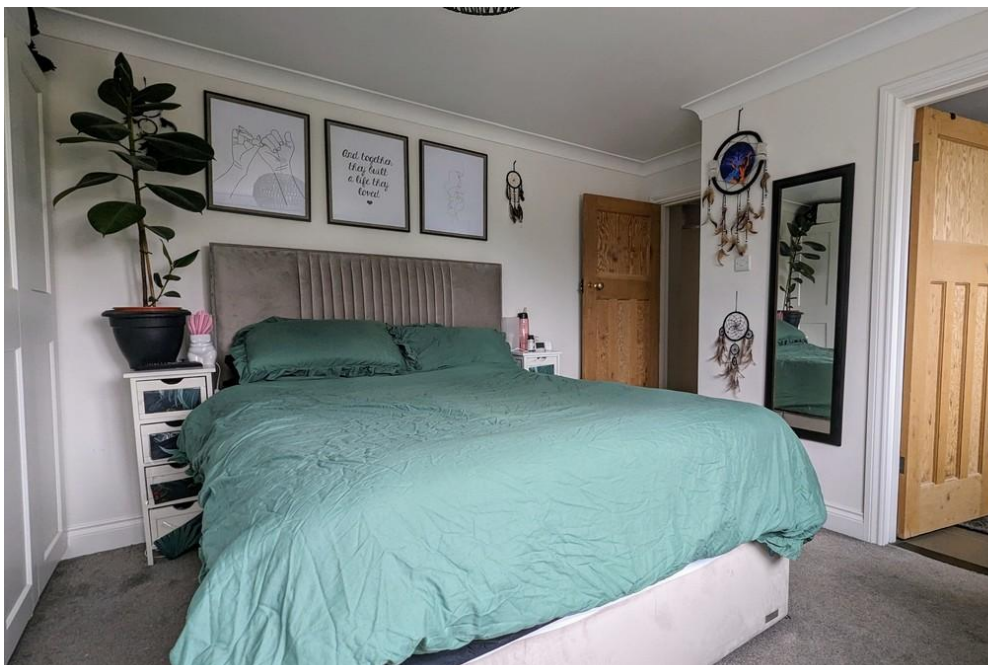
\*\*\* Guide Price £300,000 - £320,000 \*\*\* We are pleased to bring to the market this beautifully presented and extended semi detached chalet bungalow located in the popular Southcroft area. This versatile family home is in our opinion a must see with many benefits including three double bedrooms, ensuite to master, ground floor bathroom, modern kitchen, conservatory, generous rear south facing garden and so much more. Call our Gosport office now to arrange an internal inspection and avoid missing out on this beautiful home.

3 

2 

2 





**ENTRANCE/STUDY** 8' 11" x 12' 4" (2.73m x 3.76m)

**BEDROOM 3/RECEPTION ROOM** 10' 3" x 12' 4" (3.14m x 3.76m)

**RECEPTION ROOM** 12' 9" x 12' 3" (3.91m x 3.75m)

**KITCHEN** 8' 10" x 12' 5" (2.70m x 3.80m)

**CONSERVATORY** 8' 7" x 13' 7" (2.64m x 4.16m)

**BATHROOM** 6' 5" x 9' 3" (1.96m x 2.82m)

**STAIRS & LANDING**

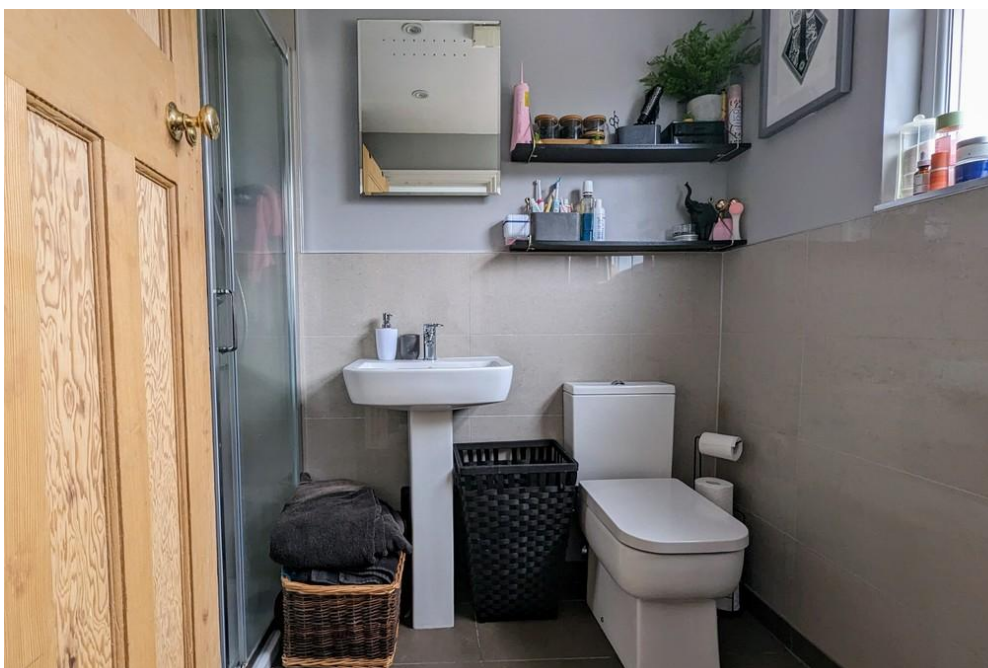
**BEDROOM 2** 13' 2" x 9' 5" (4.03m x 2.88m)

**MASTER BEDROOM** 13' 6" x 11' 7" (4.12m x 3.54m)

**ENSUITE** 5' 3" x 7' 8" (1.62m x 2.35m)

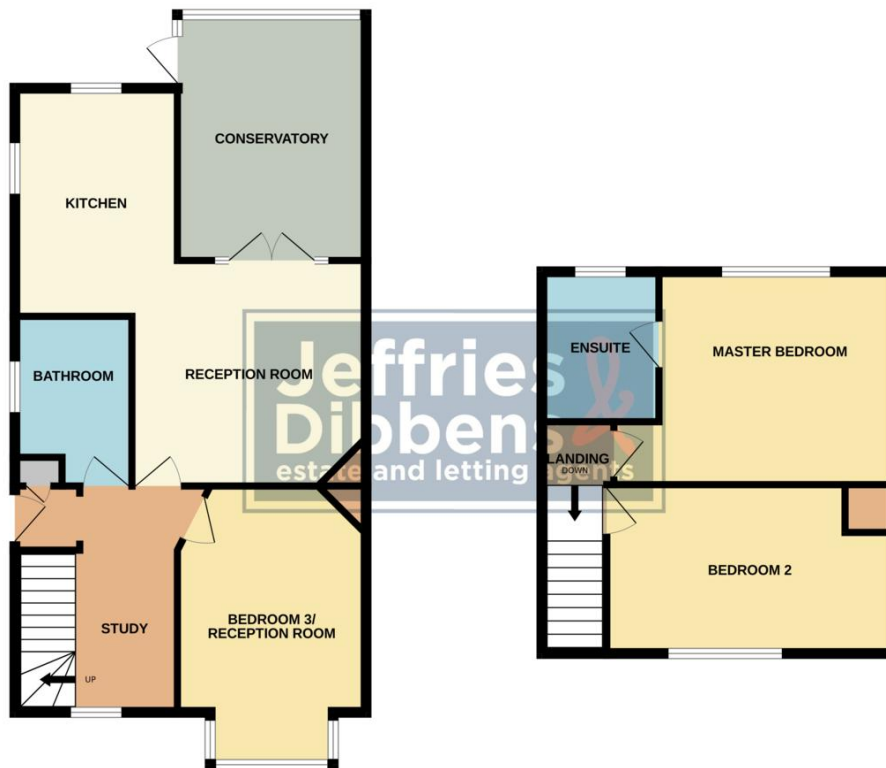
**AGENT NOTES**

- Freehold
- EPC Rating D
- Council Tax Band C



GROUND FLOOR

1ST FLOOR



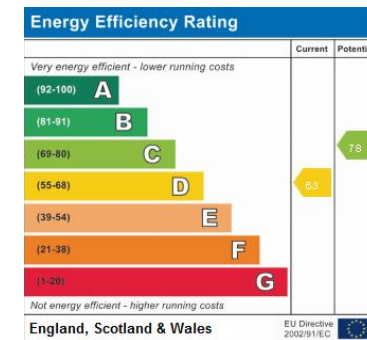
Whilst every attempt has been made to ensure the accuracy of the floorplan contained here, measurements of doors, windows, rooms and any other items are approximate and no responsibility is taken for any error, omission or mis-statement. This plan is for illustrative purposes only and should be used as such by any prospective purchaser. The services, systems and appliances shown have not been tested and no guarantee as to their operability or efficiency can be given.  
Made with Metropix ©2024

**LOCAL AUTHORITY**  
Gosport Borough Council

**TENURE**  
Freehold

**COUNCIL TAX BAND**  
Band C

**VIEWINGS**  
By prior appointment only



Agents Note: Whilst every care has been taken to prepare these particulars, they are for guidance purposes only. All measurements are approximate and are for general guidance purposes only and whilst every care has been taken to ensure their accuracy, they should not be relied upon and potential buyers/tenants are advised to recheck the measurements



**OFFICE ADDRESS**  
126 High Street, Gosport,  
Hampshire, PO12 1DU

**CONTACT**  
02392 602 155  
gosport@dibbensproperty.co.uk  
www.jdea.co.uk