



GUIDE PRICE  
**£285,000**  
**6 Moore Gardens**  
Gosport, PO12 3PG

## PROPERTY SUMMARY

Nestled away on the popular Cheriton Road estate and backing on to Privett Park is this beautifully presented three bedroom semi-detached family home. This must see property has so much to offer including modern kitchen/diner, separate lounge, two double bedrooms, first floor bathroom, low maintenance garden, off road parking for two vehicles and so much more. Call our Gosport office now to arrange an internal inspection and avoid missing out on this fantastic property that is ready to go.





### **ENTRANCE PORCH**

**LOUNGE** 13' 9" x 13' 1" (4.20m x 4.00m)

**DINING ROOM** 7' 4" x 10' 5" (2.25m x 3.18m)

**KITCHEN** 6' 2" x 10' 5" (1.90m x 3.19m)

### **STAIRS & LANDING**

**BEDROOM 1** 10' 7" x 8' 11" (3.24m x 2.74m)

**BATHROOM** 7' 7" x 4' 7" (2.32m x 1.42m)

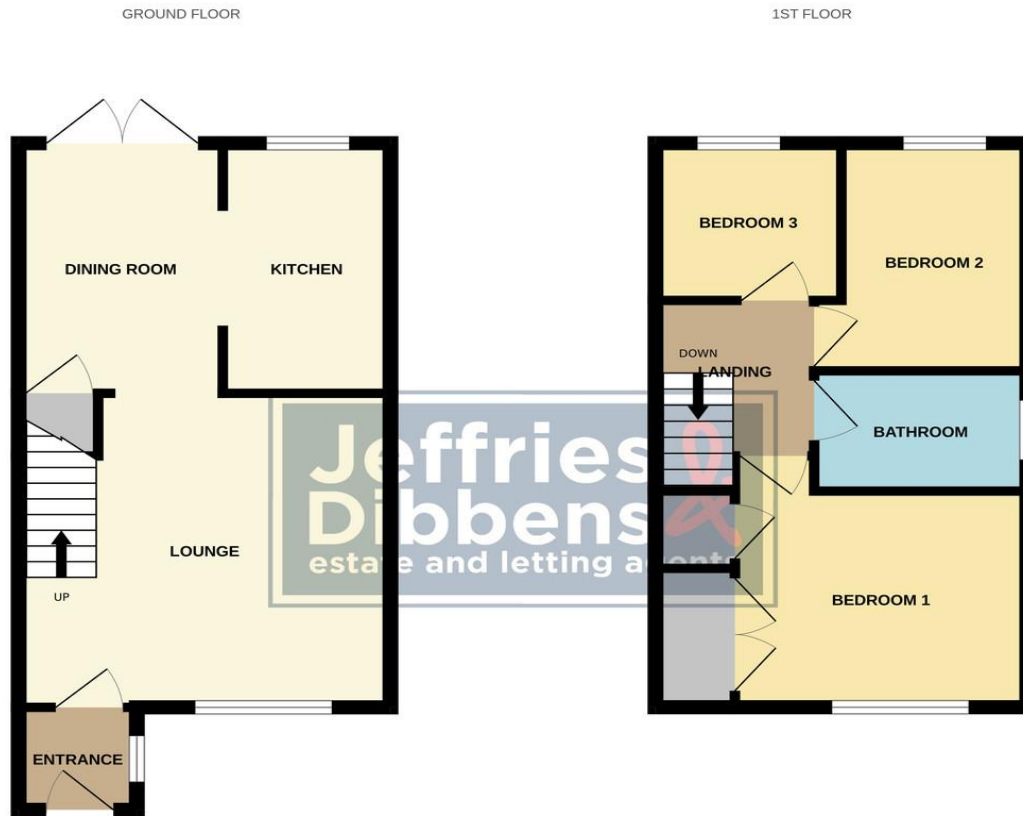
**BEDROOM 2** 6' 8" x 9' 6" (2.04m x 2.90m)

**BEDROOM 3** 6' 10" x 6' 6" (2.10m x 2.00m)

### **ENCLOSED REAR GARDEN**

### **AGENT NOTES**

- Freehold
- EPC Rating C
- Council Tax Band B



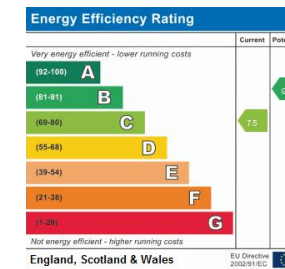
Whilst every attempt has been made to ensure the accuracy of the floorplan contained here, measurements of floors, windows, rooms and any other items are approximate and no responsibility is taken for any error, omission or mis-statement. This plan is for illustrative purposes only and should be used as such by any prospective purchaser. The services, systems and appliances shown have not been tested and no guarantee as to their operability or efficiency can be given.  
Made with Metropix ©2024

**LOCAL AUTHORITY**  
Gosport Borough Council

**TENURE**  
Freehold

**COUNCIL TAX BAND**  
Band B

**VIEWINGS**  
By prior appointment only



Agents Note: Whilst every care has been taken to prepare these particulars, they are for guidance purposes only. All measurements are approximate and are for general guidance purposes only and whilst every care has been taken to ensure their accuracy, they should not be relied upon and potential buyers/tenants are advised to recheck the measurements

**Jeffries  
Dibbens &**  
estate and letting agents

**OFFICE ADDRESS**  
126 High Street, Gosport,  
Hampshire, PO12 1DU

**CONTACT**  
02392 602 155  
gosport@dibbensproperty.co.uk  
www.jdea.co.uk