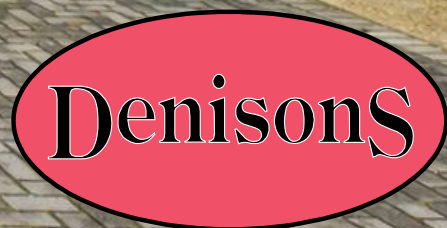




23 Nelson Drive



23 Nelson Drive

Christchurch, BH23 3SB

£460,000

This beautifully presented family home has been renovated to a high standard throughout, offering stylish and versatile accommodation ideal for modern family living. The property boasts four well-proportioned bedrooms, including a downstairs bedroom with en-suite, complemented by a modern family bathroom finished to a high standard. There is a separate lounge, providing a comfortable and relaxing space, which leads through to the kitchen/diner, ideal for both everyday living and entertaining. The kitchen/diner also provides access to the conservatory, which features a wood burner and French doors opening onto the rear garden, creating a cosy yet light-filled additional living space. Outside, the home benefits from a good-size rear garden, perfect for families and outdoor enjoyment, while to the front there is driveway parking for multiple vehicles. Conveniently located close to amenities, bus routes, Avon Beach and well-regarded local schools, this impressive home combines comfort, style and an excellent location. Vendor suited, allowing for a smoother purchase process.



Hall

Lounge

Bedroom

En-suite

Kitchen/Diner

Conservatory

Landing

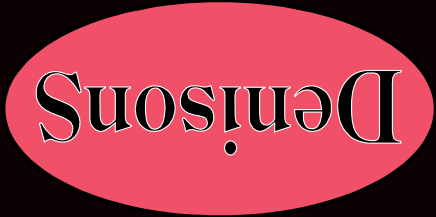
Bedroom

Bedroom

Bedroom

Bathroom



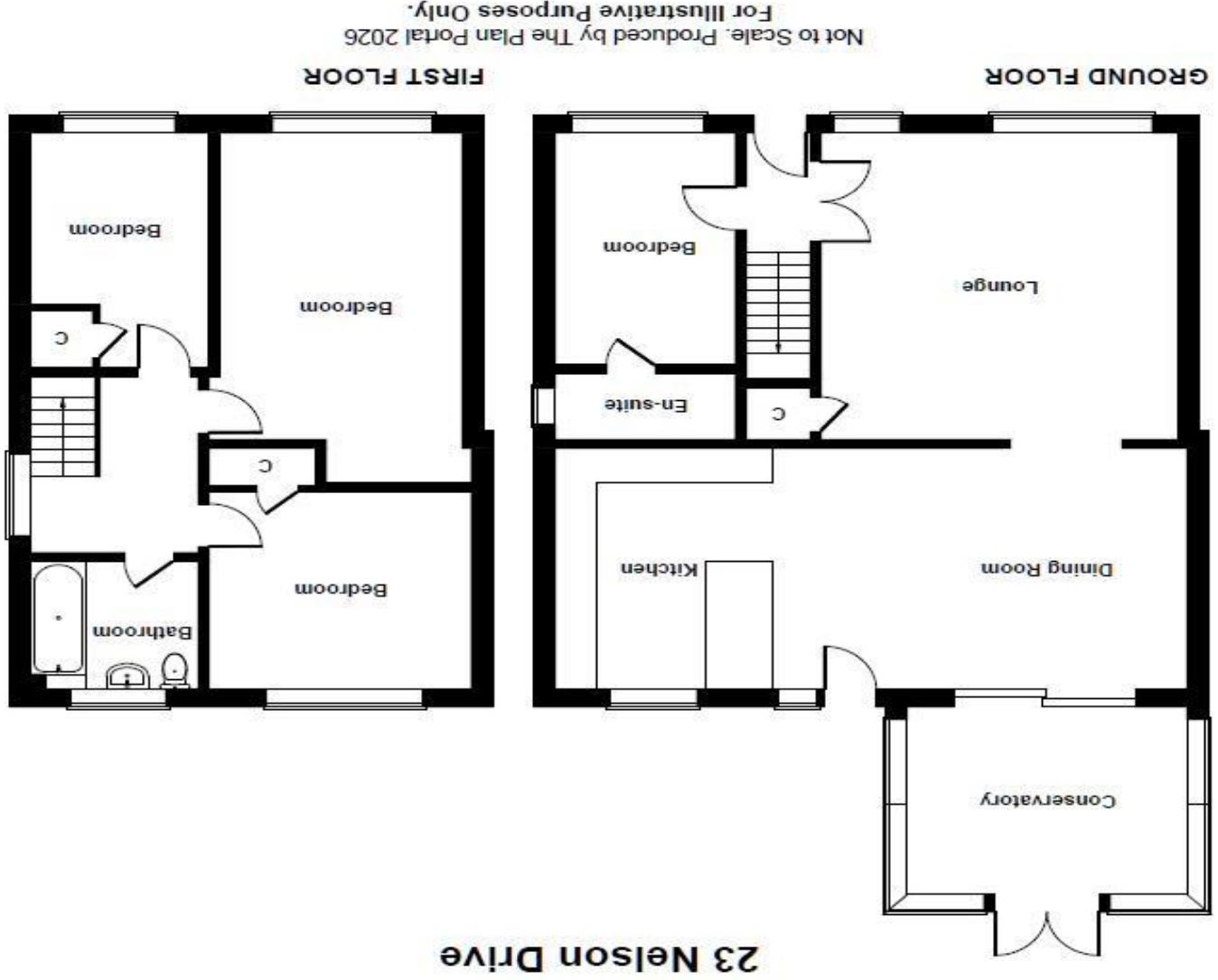


Denisons for themselves and for the Vendors or lessors of this property, whose Agents they are, give notice that these particulars are produced in good faith, are set out as a general guide only and do not constitute any part of a Contract. No person in the employment of Denisons has any representation or warranty whatever in relation to this property.

www.denisons.com

Mayfair
Cashel House, London, W1U 3JT
0870 112 7099
mayfair@denisons.com

Christchurch
12 Castle Street, Christchurch BH23 1DT
01202 484748
christchurch@denisons.com



Score	Energy rating	Current	Potential
92+	A		
81-91	B		
69-80	C	69 C	
55-68	D		89 B
39-54	E		
21-38	F		
1-20	G		

