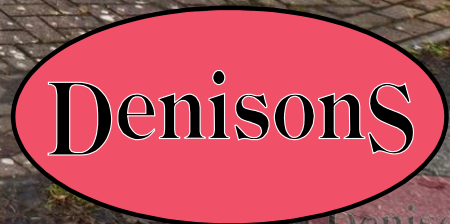




5 Lechlade Gardens



5 Lechlade Gardens

Bournemouth, BH7 7JD

£550,000 Offers In Excess

Nestled in a highly sought-after location, this stunning detached residence offers the perfect blend of comfort, style, and convenience. Boasting four spacious bedrooms, two of which feature built-in wardrobes, this home is ideal for modern family living. The inviting interior includes three generously sized reception rooms, providing plenty of space for both relaxation and entertaining. At the heart of the home, the contemporary kitchen is equipped with integrated appliances, while the expansive lounge and bar area, complete with skylights and bifold doors, creates a light-filled atmosphere and seamless connection to the private rear garden. Upstairs, the master bedroom enjoys the luxury of an en-suite, with a sleek modern family bathroom serving the other rooms. On the ground floor, a dedicated study offers a quiet space for work, while the utility room and W/C add to the home's practical layout. The private, low-maintenance rear garden is a true retreat, including the hot tub if the buyer would prefer - perfect for unwinding after a long day. The property also provides allocated parking for two vehicles, adding to its appeal. Ideally located within walking distance of BH Live (Littledown), Bournemouth Hospital, and JP Morgan, this exceptional home offers a rare opportunity to enjoy both peaceful living and easy access to local amenities. Don't miss the chance to make it yours!



Hallway

Kitchen 7' 11" x 14' 2" (2.41m x 4.31m)

Breakfast Room/Study 8' 4" x 10' 8" (2.54m x 3.25m)

Lounge 23' 0" x 11' 10" (7.01m x 3.60m)

Dining Room 14' 6" x 10' 8" (4.42m x 3.25m)

Utility room

WC

Bedroom/Study 8' 2" x 9' 6" (2.49m x 2.89m)

Landing

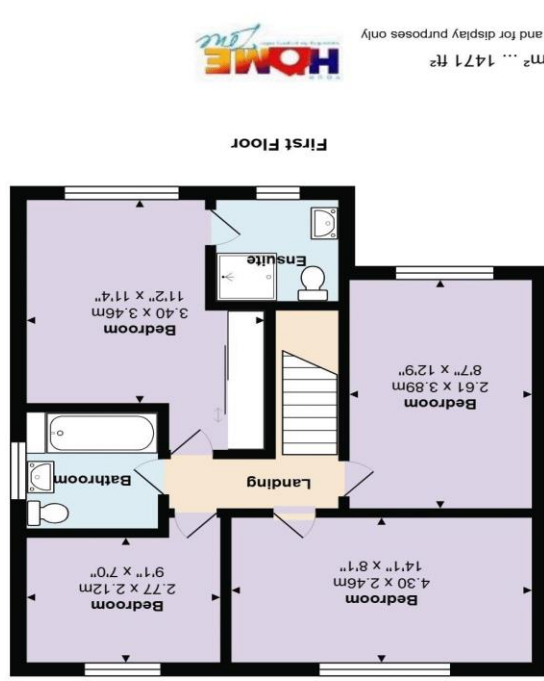
Bedroom 1 11' 2" x 11' 4" (3.40m x 3.45m)

En-suite

Bedroom 2 8' 7" x 12' 9" (2.61m x 3.88m)

Bedroom 3 14' 1" x 8' 1" (4.29m x 2.46m)





Total Area: 136.7 m² ... 1471 ft²
All measurements are approximate and for display purposes only



Christchurch
12 Castle Street, Christchurch BH23 1DT
01202 484748
christchurch@denisons.com

Mayfair
Cashel House, London, W1U 3JT
0870 112 7099
mayfair@denisons.com

www.denisons.com

Denisons for themselves and for the Vendors or lessors of this property, whose Agents they are, give notice that these particulars are produced in good faith, are set out as a general guide only and do not constitute any part of a Contract. No person in the employment of Denisons has any authority to make or give any representation or warranty whatever in relation to this property.

