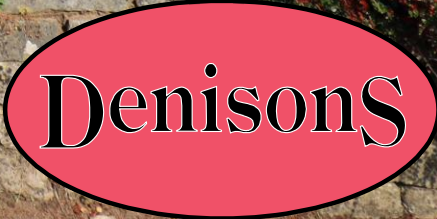




19 Woodhayes Avenue



19

19 Woodhayes Avenue

Christchurch, Dorset, BH23 4RP

£675,000

Situated on a large corner plot with a GOOD SIZE GARDEN, this FAMILY HOME is located in a PEACEFUL LOCATION overlooking a wooded spinney. The home offers potential to extend (subject to the necessary permissions) and has the added benefit of ample off-road parking together with a garage.

The modern accommodation has bedroom 3 on the ground floor with two other bedrooms on the first floor together with a family bathroom. The lounge runs from front to back and there is a conservatory off the room with a southerly aspect over the large wide garden. The kitchen is modern throughout and of good size.

We strongly recommend an internal inspection to appreciate the accommodation on offer. Please call us to arrange a viewing.



Entrance Hall

Ground Floor Cloakroom

Ground floor Bedroom 3 8' 11" x 8' 7" (2.72m x 2.61m)

Lounge 18' 1" x 10' 1" (5.51m x 3.07m)

Conservatory 13' 9" x 7' 9" (4.19m x 2.36m)

Kitchen/Breakfast Room 14' 10" x 9' 5" (4.52m x 2.87m)

First Floor Landing

Bedroom 1 11' 4" x 9' 10" (3.45m x 2.99m)

Bedroom 2 11' 0" x 8' 4" (3.35m x 2.54m)

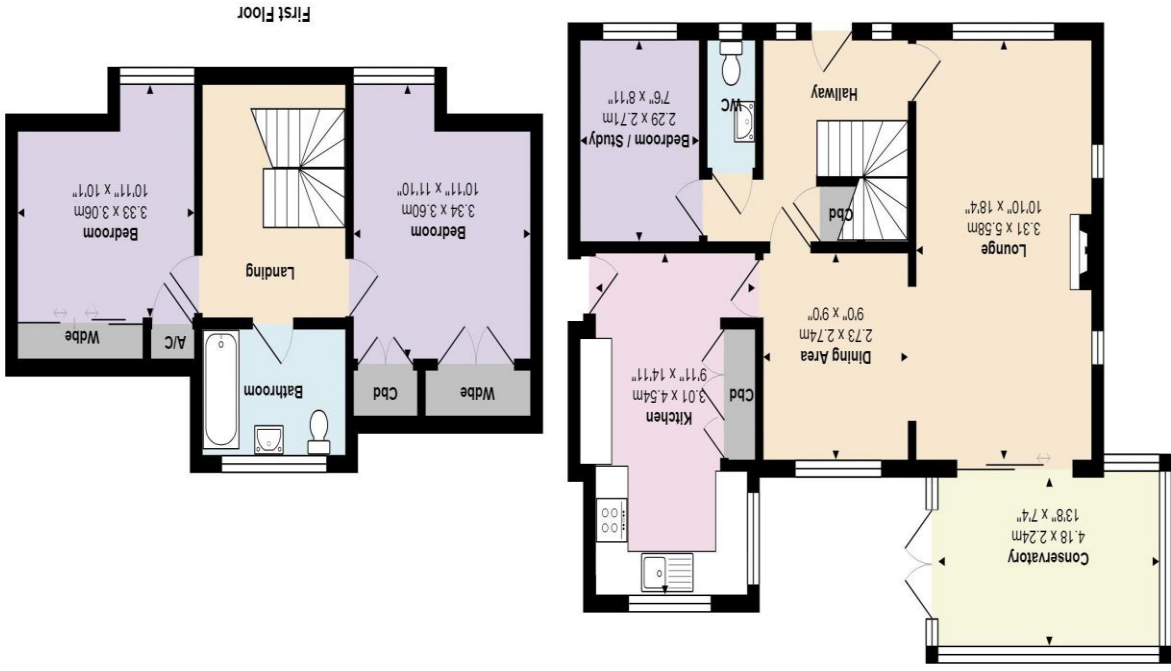
Family Bathroom

Garage

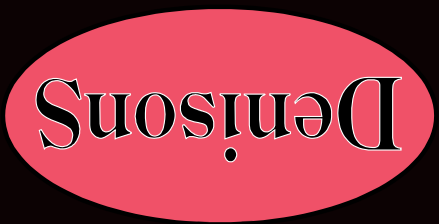
Gardens

Driveway Parking





Total Area: 107.9 m² ... 1162 ft²
 All measurements are approximate and for display purposes only.



www.denisons.com

Mayfair
 Cashel House, London, W1U 3JT
 0870 112 7099
 mayfair@denisons.com

Christchurch
 12 Castle Street, Christchurch BH23 1DT
 01202 484748
 christchurch@denisons.com

Denisons for themselves and for the Vendors or lessors of this property, whose Agents they are, give notice that these particulars are produced in good faith, are set out as a general guide only and do not constitute any part of a Contract. No person in the employment of Denisons has any authority to make or give any representation or warranty whatever in relation to this property.