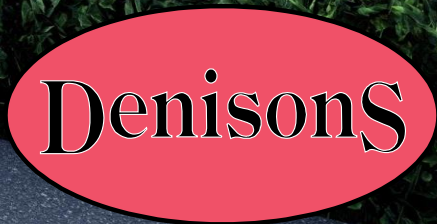




17 Dunlin Close





# 17 Dunlin Close

Mudford, Christchurch, Dorset. BH23 4BE

£795,000

Preliminary details are released on this comprehensively refurbished and extended Bungalow, featuring a large open plan kitchen/diner together with contemporary styled lounge having a stunning dual aspect with bi fold doors and a feature roof lantern. The property will also feature a new kitchen with underfloor heating together with a total rewire and newly installed central heating system. The corner position in one of Mudfords premier roads is located moments from the beach and beautiful Mudford harbour. This virtually brand new home is expected to sell very quickly, we are therefore inviting serious buyers to contact us to arrange a meeting with the developer.

## Entrance Porch

## Entrance Hallway

**Open Plan Kitchen & Lounge 27' 0" x 22' 8"**  
**(8.22m x 6.9m)**

**Utility Room 6' 3" x 5' 7" (1.9m x 1.7m)**

**Bedroom 1 16' 1" x 11' 10" (4.9m x 3.6m)**

**Bedroom 2 10' 10" x 10' 2" (3.3m x 3.1m)**

**Bedroom 3 10' 10" x 10' 2" (3.3m x 3.1m)**

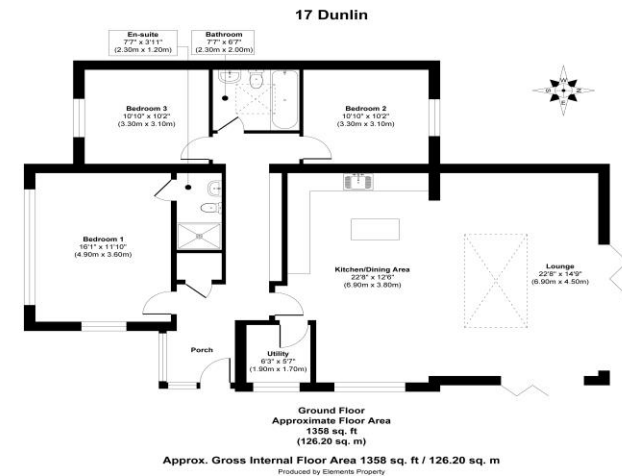
## Family Bathroom

**En-suite 7' 7" x 3' 11" (2.3m x 1.2m)**

## Garage

### Directions

On entering Mudford at the green and shops, turn into Dunlin Close and the property is located on the right a short way along.



Christchurch  
12 Castle Street, Christchurch BH23 1DT  
**01202 484748**  
christchurch@denisons.com

Mayfair  
Cashel House, London, W1U 3JT  
**0870 112 7099**  
mayfair@denisons.com

**Denisons**

[www.denisons.com](http://www.denisons.com)

Denisons for themselves and for the Vendors or lessors of this property, whose Agents they are, give notice that these particulars are produced in good faith, are set out as a general guide only and do not constitute any part of a Contract. No person in the employment of Denisons has any authority to make or give any representation or warranty whatever in relation to this property.