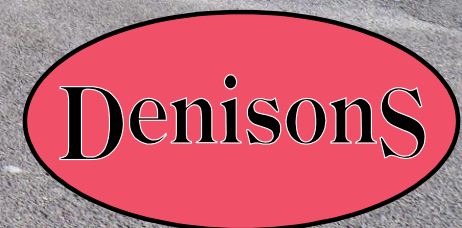




Flat 40, Blenheim Court



Flat 40

46 Regency Crescent, Blenheim
Court, Christchurch, Dorset, BH23
2UG

£115,000

Blenheim court was constructed by McCarthy & Stone LTD and comprises of 65 properties arranged over three floors and includes a lift to all residents. This property is for over 60's. The house manager works Monday-Friday but there is also a 24 hour emergency careline response system. This one bedroom retirement apartment will be offered to the market with no onward chain. The accommodation comprises of a lounge/diner, kitchen, double bedroom and a shower room. Please call us to arrange an internal inspection.



Entrance Hallway

Shower Room

Lounge/Diner 10' 8" x 19' 9" (3.25m x 6.02m)

Kitchen 7' 8" x 6' 2" (2.34m x 1.88m)

Bedroom 9' 5" x 13' 5" (2.87m x 4.09m)

Services

All services are connected. Council tax band C.

Directions

From the main roundabout in Christchurch take the Bargates exit and continue over the railway bridge into Fairmile Rd. At the 1st roundabout turn left and take the 1st exit left into Regency Crescent



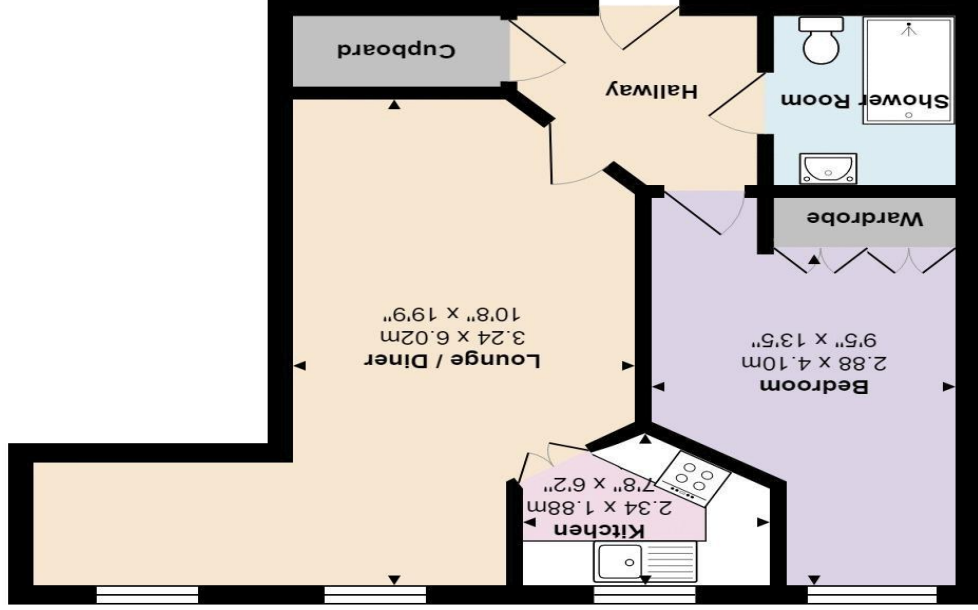


Energy performance certificate (EPC)

Energy performance certificate (EPC) - valid until 01/01/2021	
Energy rating B	Valid until 01/01/2021
Property type Mid-floor flat	
Total floor area 40 square metres	
Rules on listing this property This property is listed as a B. It has the potential to be B.	



www.denisons.com



All measurements are approximate and for display purposes only



Mayfair
 Cashel House, London, W1U 3JT
 0870 112 7099
 mayfair@denisons.com

Christchurch
 12 Castle Street, Christchurch BH23 1DT
 01202 484748
 christchurch@denisons.com

Denisons for themselves and for the Vendors or lessors of this property, whose Agents they are, give notice that these particulars are produced in good faith, are set out as a general guide only and do not constitute any part of a Contract. No person in the employment of Denisons has any authority to make or give any representation or warranty whatever in relation to this property.