

HUNTERS®

HERE TO GET *you* THERE

HOLMEFIELD HOUSE

HUNTERS®

HERE TO GET *you* THERE



Hazlewood Crescent, London

£550,000

HUNTERS[®]

HERE TO GET *you* THERE

A four bedroom apartment in need of complete updating, situated on the ground floor of a purpose built apartment block. The apartment arranged over 1000 square footage consists of an reception room with full-size separate kitchen, four bedrooms, private balcony, one bathroom and a garage. The property is sold chain free.

Holmefield House is in the heart of Maida Hill, conveniently located for the Westbourne Station Overground, and Hammersmith & City Line as well as the local shops, parks, restaurants and riverside walks. Emslie Horniman's Pleasance Park and Meanwhile Gardens being close by you.

Please do not hesitate to get in touch for enquiries and viewings.

223 West End Lane, West Hampstead, London, NW6 1XJ | 0207 431 4777
westhampsteadsales@hunters.com | www.hunters.com



This Hunters business is independently owned and operated by Starside Estates Limited | Registered Address: 29 Oakwood Park Road, London, N14 6QB | Registered Number: 6741529 England and Wales | VAT No: 943 9575 77 with the written consent of Hunters Franchising Limited.



KEY FEATURES

- Double glazed windows
 - Over 1000 sqft
 - Private balcony
 - Private garage
- Investment opportunity
- Four bedroom apartment
 - Ground floor
 - Chain free



A living room with a grey leather sofa, a wooden chest of drawers, a black chest of drawers, and a window with white curtains.

HUNTERS
HERE TO GET *you* THERE

An empty living room with a white radiator, a window with white curtains, and a dark, worn floor.

HUNTERS®
HERE TO GET *you* THERE

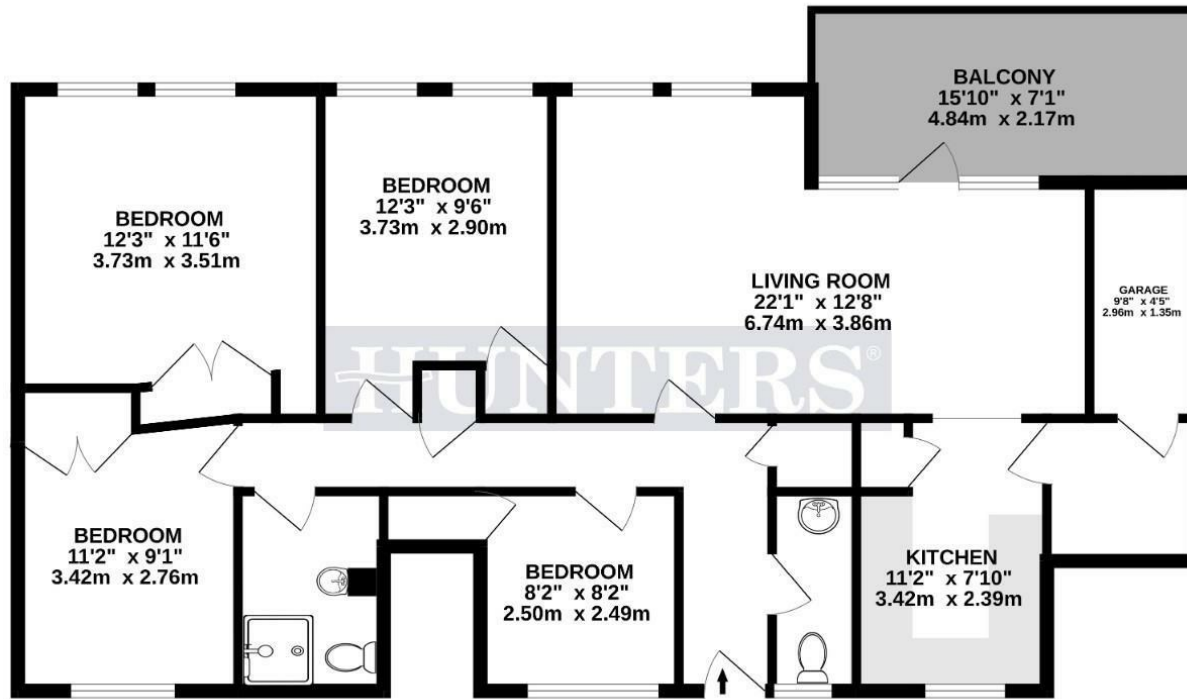
A living room with a white chest of drawers, a small table, a chair, and a window with patterned curtains.

HUNTERS
HERE TO GET *you* THERE

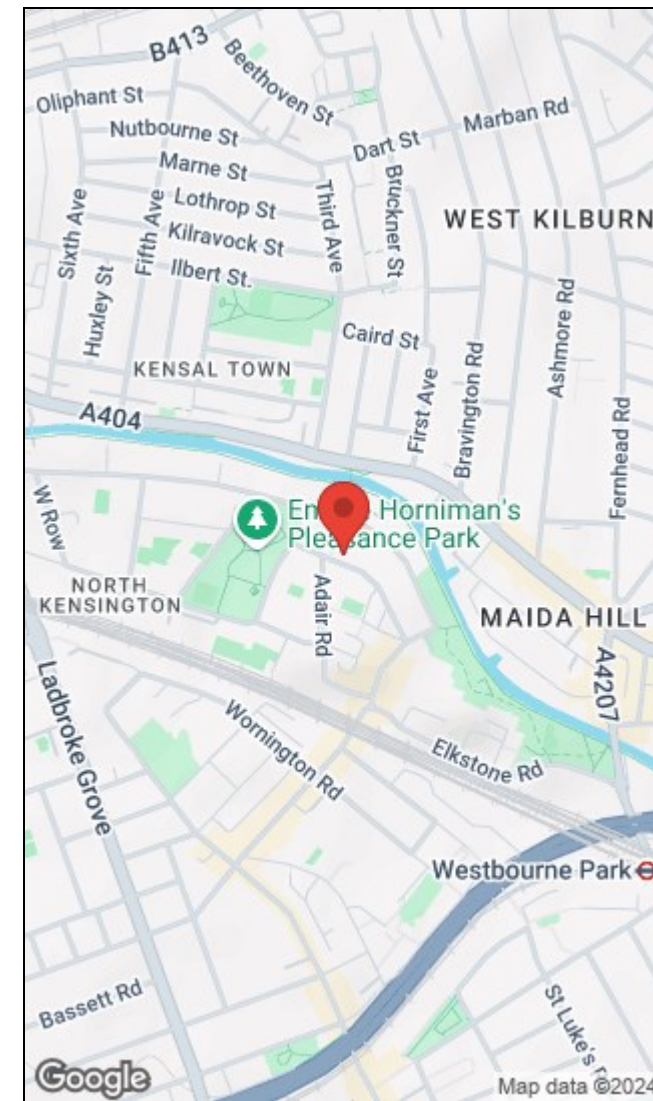
An empty living room with a white radiator, a window with red curtains, and a dark, worn floor.

HUNTERS®
HERE TO GET *you* THERE

GROUND FLOOR
1080 sq.ft. (100.3 sq.m.) approx.



TOTAL FLOOR AREA: 1080 sq.ft. (100.3 sq.m.) approx.
Whilst every attempt has been made to ensure the accuracy of the floorplan contained here, measurements of doors, windows, rooms and any other items are approximate and no responsibility is taken for any error, omission or mis-statement. This plan is for illustrative purposes only and should be used as such by any prospective purchaser. The services, systems and appliances shown have not been tested and no guarantee as to their operability or efficiency can be given.
Made with Metropix ©2024.



Energy Efficiency Rating		Environmental Impact (CO ₂) Rating	
Current	Potential	Current	Potential
Very energy efficient - lower running costs		Very environmentally friendly - lower CO ₂ emissions	
(92 plus) A		(92 plus) A	
(81-91) B		(81-91) B	
(69-80) C		(69-80) C	
(55-68) D		(55-68) D	
(39-54) E		(39-54) E	
(21-38) F		(21-38) F	
(1-20) G		(1-20) G	
Not energy efficient - higher running costs		Not environmentally friendly - higher CO ₂ emissions	
EU Directive 2002/91/EC		EU Directive 2002/91/EC	
England & Wales		England & Wales	

223 West End Lane, West Hampstead, London, NW6 1XJ | 0207 431 4777
westhampsteadsales@hunters.com | www.hunters.com



This Hunters business is independently owned and operated by Starside Estates Limited | Registered Address: 29 Oakwood Park Road, London, N14 6QB | Registered Number: 6741529 England and Wales | VAT No: 943 9575 77 with the written consent of Hunters Franchising Limited.