



Foxglove Close, , West Drayton, UB7 9GA

- Two Bedrooms w/ Fitted Wardrobes
- Modern & Residential 'Drayton Garden Village'
- Private Rear Garden
- Large Reception Room
- Viewings Highly Recommended
- Terraced Home
- Two Allocated Parking Spaces
- Ground Floor W.C
- Modern Fitted Kitchen & Bathroom
- EPC Rating: B

Asking Price £450,000



Foxglove Close, , West Drayton, UB7 9GA

DESCRIPTION

A two bedroom, terraced home being offered for sale in the popular Drayton Garden Village development. The property is set in a cul de sac location and is perfect for first time buyers looking for a home to move straight into.

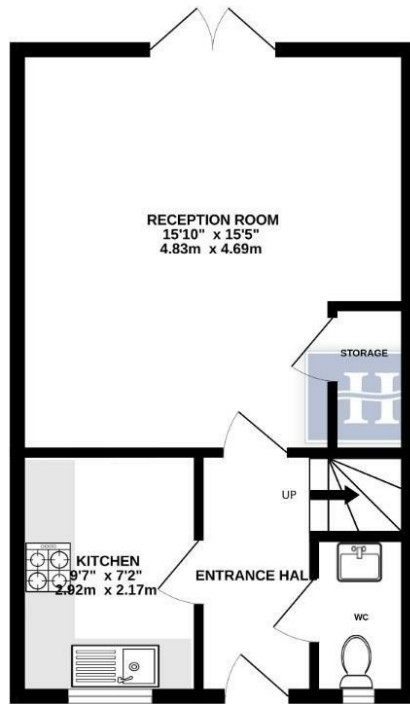
The property comprises entrance hall, ground floor wc, separate and modern fitted kitchen, large reception room, two first floor bedrooms both with fitted wardrobes and a modern three piece bathroom suite. Outside the property has a private rear garden, incorporating part patio, part lawn and also comes with two allocated parking spaces.

West Drayton's position on the western edge of the Capital means that it is superbly placed to access Central London with ease. With frequent services to London Paddington in less than 25 minutes from the West Drayton Mainline Train Station with the Elizabeth Line upgrade, which brings West Drayton to within a 40 minute train journey to Canary Wharf and will give regular access to the center of London. The property also has convenient vehicular access to the M25 and M4 motorways. The property is within walking distance to local shops, great schools, local bus routes and a short bus ride to West Drayton Town Centre. West Drayton is 10 minutes from Heathrow airport.

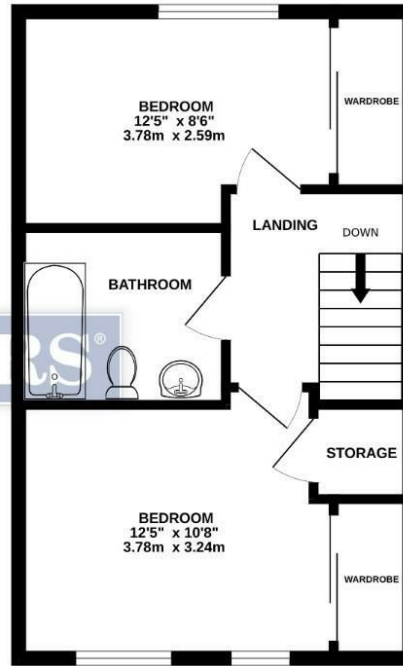




GROUND FLOOR
391 sq.ft. (36.3 sq.m.) approx.



1ST FLOOR
391 sq.ft. (36.3 sq.m.) approx.



TOTAL FLOOR AREA : 782 sq.ft. (72.7 sq.m.) approx.

Whilst every attempt has been made to ensure the accuracy of the floorplan contained here, measurements of doors, windows, rooms and any other items are approximate and no responsibility is taken for any error, omission or mis-statement. This plan is for illustrative purposes only and should be used as such by any prospective purchaser. The services, systems and appliances shown have not been tested and no guarantee as to their operability or efficiency can be given.
Made with Metroplan ©2024

Viewings

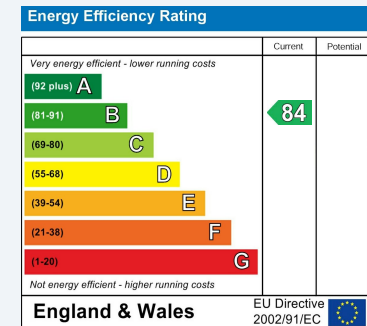
Please contact hayes@hunters.com, if you wish to arrange a viewing appointment for this property or require further information.

Valuations

For a valuation of your property, please email the team with your property details, contact information and the times you are available.

ENERGY PERFORMANCE CERTIFICATE

The energy efficiency rating is a measure of the overall efficacy of a home. The higher the rating the more energy efficient the home is and the lower the fuel bills will be.



These particulars are intended to give a fair and reliable description of the property but no responsibility for any inaccuracy or error can be accepted and do not constitute an offer or contract. We have not tested any services or appliances (including central heating if fitted) referred to in these particulars and the purchasers are advised to satisfy themselves as to the working order and condition. If a property is unoccupied at any time there may be reconnection charges for any switched off/disconnected or drained services or appliances - All measurements are approximate.

THINKING OF SELLING? If you are thinking of selling your home or just curious to discover the value of your property, Hunters would be pleased to provide free, no obligation sales and marketing advice. Even if your home is outside the area covered by our local offices we can arrange a Market Appraisal through our national network of Hunters estate agents.



31 Coldharbour Lane, Hayes, UB3 3EB
Tel: 0208 848 0978 Email: hayes@hunters.com <https://www.hunters.com>

