



Lodge No. L05 Rivers Edge, Bentham Rd, LA6 3HR
£99,000

A well presented 3 bedroom Lodge located at Rivers Edge Holiday Park, near Ingleton.

In brief this holiday home consists of a sitting room, kitchen/diner, a shower room, double bedroom with an ensuite and 2 twin rooms.

Benefitting from on-site amenities and it's proximity to The Yorkshire Dales and The Lake District National Parks.

An ideal holiday retreat.

Property Description

This Clearwater Lodge is well presented, well equipped, in exceptional condition and in a desirable location, with access to an on-site restaurant and bar, play areas and a short distance to Bentham golf course, Ingleton waterfall trail and a host of other activities.

Comprised of an open plan sitting, dining room and kitchen with access on to a full wrap around balcony, providing a superb area for relaxing, the lodge also features a main double bedroom with an ensuite and dressing room, with two twin rooms, one currently used as a single room and office. This lodge has all you need for a relaxing escape to the countryside.

Located on Rivers Edge Holiday Park, it is ideally located for trips to the Lakes, Dales, Forest of Bowland and Morecambe Bay, making it a perfect, holiday retreat.

Property Information

An opportunity to purchase a leisure home situated in a 5 star park

Fully equipped

Furniture and all items included

Site open 52 weeks of the year

On-site bistro

Site fees: £4523 (January 1st to December 31st)

1st year site free internet

Gas and electric billed quarterly

Ingleton Location

Ingleton is a thriving village with a strong community and a good range of bars, pubs and shops. It is well known for the spectacular waterfalls walk. Ingleborough - one of the Yorkshire Dales 3 Peaks - dominates the local landscape.

The village has a good Primary School and is in the catchment for both Settle College and QES, Kirkby Lonsdale. Local amenities are within easy access, including the open air swimming pool and an ASDA grocery store with petrol forecourt on the A65.

Trains can be caught at Bentham and Clapham on the Leeds/Lancaster line. Lancaster and the M6 are half an hour by car. Popular local market towns include Kirkby Lonsdale and Settle. The A65 provides good

links to Kendal and Skipton. As well as the Yorkshire Dales, Ingleton is ideal for day trips to the Lake District, Forest of Bowland and Morecambe Bay.

Sitting Room



Fitted carpet, two radiators, electric fire, 50" television, sofa bed, sofa, cupboard housing combi-boiler, UPVC windows, sliding patio doors.

Kitchen/Diner



Fitted carpet, radiator, range of wall and base units, integrated fridge freezer, washing machine, dishwasher, double oven with gas hob, and extractor, microwave, single drainer sink, double glazed window.

Hallway

Fitted carpet, radiator, access to all rooms.

Bedroom One



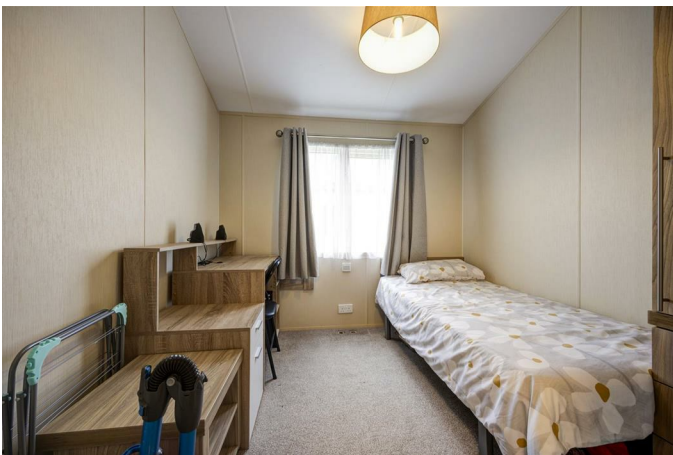
Double bedroom, fitted carpet, radiator, king size bed, fitted furniture, walk-in wardrobe and en-suite .

Ensuite



Walk-in wardrobe, through to shower room with wood laminate flooring, radiator, toilet, wash basin, double glazed window with textured glass.

Bedroom Two



Twin bedroom, fitted carpet, radiator, built-in wardrobes and dressing table, double glazed window.

Bedroom Three



Currently configured as single room and office space but can be put back to twin room.

Bathroom



Wood laminate flooring, wash basin, toilet, shower, extractor fan, double glazed window with textured glass.

External

Outside



Full decking, including furniture.

Parking

One designated parking space for one car plus visitor spaces.

Area Map

