



Bishopswood Church Avenue, Clapham, LA2 8EA
Offers In The Region Of £730,000

Bishopswood offers a rare chance to own a detached property in the charming Yorkshire Dales village of Clapham, with stunning views and desirable plot, it features five bedrooms, two bathrooms, and a spacious open-plan kitchen and living area. Ample parking and a serene rear garden completes the package.

Property Description

Bishopswood is an extraordinary opportunity to own a fine detached property in a tranquil setting within the beloved Yorkshire Dales village of Clapham. Accessed via a private drive, Bishopswood sits atop an elevated sloping plot, offering superb views over the village and the Forest of Bowland.

The ground floor welcomes you with an entrance lobby and hallway, seamlessly leading to a laundry room, shower room, three bedrooms and providing access to the integral garage. On the first floor are two additional bedrooms, one boasting a private balcony and walk in wardrobe, a family bathroom and a tremendous open-plan kitchen and living space, complete with its own private balcony. This space effortlessly flows into a utility area and conservatory, which opens onto a tranquil rear garden adorned with lush lawns and mature foliage.

To the front of the property lies ample parking, ensuring convenience for residents and guests alike.

Location

Bishopswood is located within the heart of Clapham - a very popular village with tourists and locals alike. Famous for its incredibly scenic walk to Ingleborough Cave and beyond, as well as its picturesque properties and community spirit - freehold properties are rarely available. A base for popular ascents of Ingleborough, the location is ideal for hikers, cyclists and cavers. The village has a community run village shop offering the majority of day-to-day needs. It also has a cosy village pub offering great food and local ales. Clapham has its own train station on the Leeds/Lancaster line and buses can be caught from the center of the village, running between Settle and Kirkby Lonsdale.

The bustling market towns of Kirkby Lonsdale and Settle are a short drive away, both providing a good range of shops, pubs, restaurants and bars. Excellent primary schooling is available in Austwick and Giggleswick and the village falls within the catchment for highly regarded secondary education at Settle College and QES, Kirkby Lonsdale, and within easy reach of both Sedbergh & Giggleswick private schools.

Property Information

Freehold

Council Tax Band E

EPC Rating E

Mains water drainage and electric

LPG boiler proving central heating and hot water

Timber framed double glazed windows and doors throughout

B4RN high speed fibre internet connection

First Floor

Open Plan Kitchen & Living Areas 31'3" x 22'0" (9.54m x 6.72m)



Impressive open plan living area and kitchen featuring: Tile effect flooring and Oak flooring, four radiators, feature fireplace and multi fuel stove, timber framed double glazed windows to side and rear aspects, timber double glazed bi-folding door to balcony with superb views. Dining area suitable for large family dining table. Spacious sitting room area.

Kitchen Area 13'0" x 9'9" (3.97m x 2.98m)



Kitchen area featuring fully fitted kitchen with range of wall and base units, Neff appliances; microwave, two ovens, hob and dishwasher, sink and drainer, breakfast bar.

Utility

Useful utility with vinyl flooring, radiator, fitted units, space for appliances.

Conservatory



UPVC double glazed conservatory with access to garden. Oak flooring, radiator, French doors leading to patio.

Bedroom One 13'0" x 11'5" (3.97 x 3.49)

Spacious dual aspect double bedroom with private balcony. Fitted carpet, radiator, walk in wardrobe, timber framed double glazed window to side, timber double glazed bi-folding door to balcony with superb views.

Bedroom Five / Office 11'11" x 9'3" (3.64 x 2.83)



Small double room or office with dual aspects. Oak flooring, radiator, timber framed double glazed windows to side and rear aspects.

Bathroom 9'5" x 7'7" (2.89 x 2.33)



Modern family bathroom with vinyl flooring, bath, shower cubicle, toilet, wash basin, radiator, heated towel rail, extractor fan, timber double glazed window with textured glass.

Landing

Landing providing access to bathroom, two bedrooms and open plan kitchen/dining/sitting room and rear porch. Fitted carpet, radiator, stairs to ground floor.

Ground Floor

Entrance Lobby 12'7" x 7'1" (3.85 x 2.17)



Spacious entrance lobby with plenty of rooms for coats and boots. Timber framed double glazed window and door to front aspect, Oak flooring, access to hall.

Hallway

Hallway providing access to ground floor accommodation, integral garage, laundry room. Oak flooring, radiator, stairs to first floor.

Bedroom Three 13'11" x 8'3" (4.25 x 2.54)



Double bedroom. Fitted carpet, radiator, timber framed double glazed window to front aspect.

Bedroom Two 13'11" x 10'4" (4.25 x 3.16)



Double bedroom with dual aspect. Fitted carpet, radiator, timber framed double glazed window to front and side aspects.

Bedroom Four 10'11" x 9'4" (3.34 x 2.86)



Double bedroom. Fitted carpet, radiator, timber framed double glazed window to side aspect.

Shower Room 7'9" x 5'7" (2.37 x 1.71)



Modern suite with vinyl flooring, shower cubicle, toilet, wash basin, heated towel rail, extractor fan.

Laundry Room

Oak flooring, radiator, plumbing for washing machine and tumble dryer.

Garage & Storage Room

Spacious integral garage with concrete floor, light and power, LPG boiler, timber and glazed double doors, two useful store rooms to rear of garage.

Garden & Parking



A large plot offering seclusion from the village whilst being situated within the heart of it. Providing a charming mix of well tended established gardens and natural wooded areas. A large patio seating area to the rear is ideal for entertaining, with further seating areas to each side of the property. There is a handy shed, wood store, outside tap and bin store, as well as parking for at least four cars.

Agent Notes

Fisher Hopper has not tested services, fixtures, fittings, central heating, gas and electrical systems. If in doubt, purchasers should seek professional advice. Items in these photographs may not be included in the sale of the property.

OFFER PROCEDURE

Fisher Hopper, as Agents in the sale of the property, will formally check the identification of prospective purchasers. In addition the purchaser will be required to provide information regarding the source of funding as part of our offer handling procedure.

FINANCIAL ADVICE

Free and no obligation mortgage advice is available on our website. Alternatively, please contact us to arrange a call from our mortgage broker.

Your home is at risk if you do not keep up the repayments on a mortgage or other loan secured on it. Written details available upon request

MARKET APPRAISALS

If you have a property or business which needs a market appraisal or valuation, our local knowledge, experience and coverage will ensure you get the best advice. Our Guild Referral Network of over 800 specially selected offices can provide this no obligation service anywhere in the country. Call or email now to let us get you moving.

INTRODUCERS FEES

Fisher Hopper Ltd receives and introducers fee from Napthens Solicitors of £100.00 + VAT for all successful introductions.

FISHER HOPPER

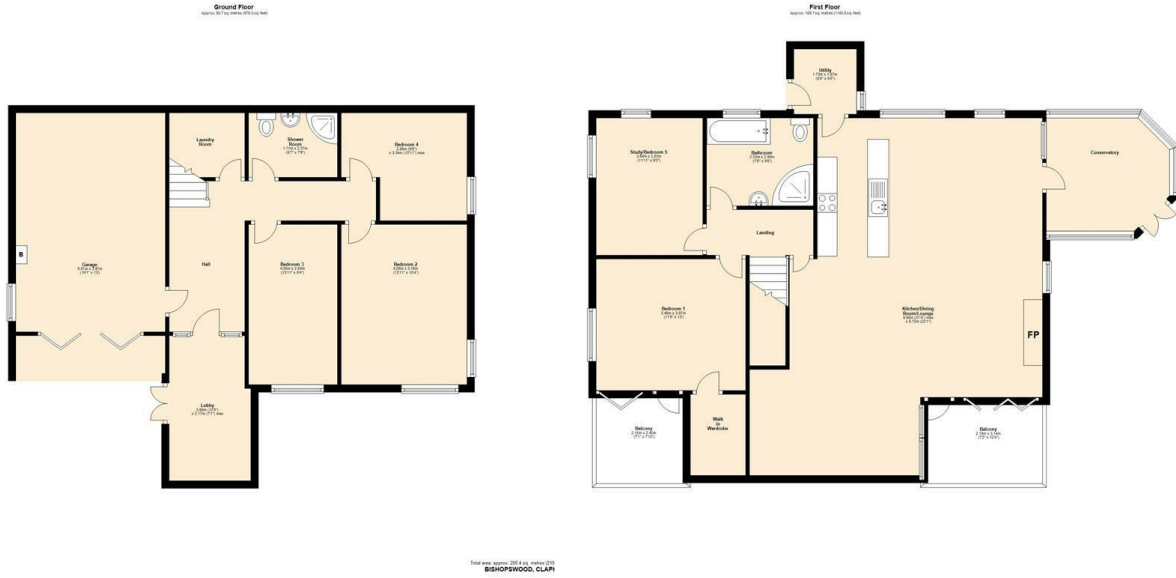
Fisher Hopper is a trading name for Fisher Hopper Limited, which is registered in England No 08514050. The registered office for the company is: 5 Battalion Court, Colburn Business Park, Catterick Garrison, England, DL9 4QN. Company Director: M. Alexander

The office address for Fisher Hopper is: 43 Main Street, Bentham, Lancaster, North Yorkshire LA2 7HJ.

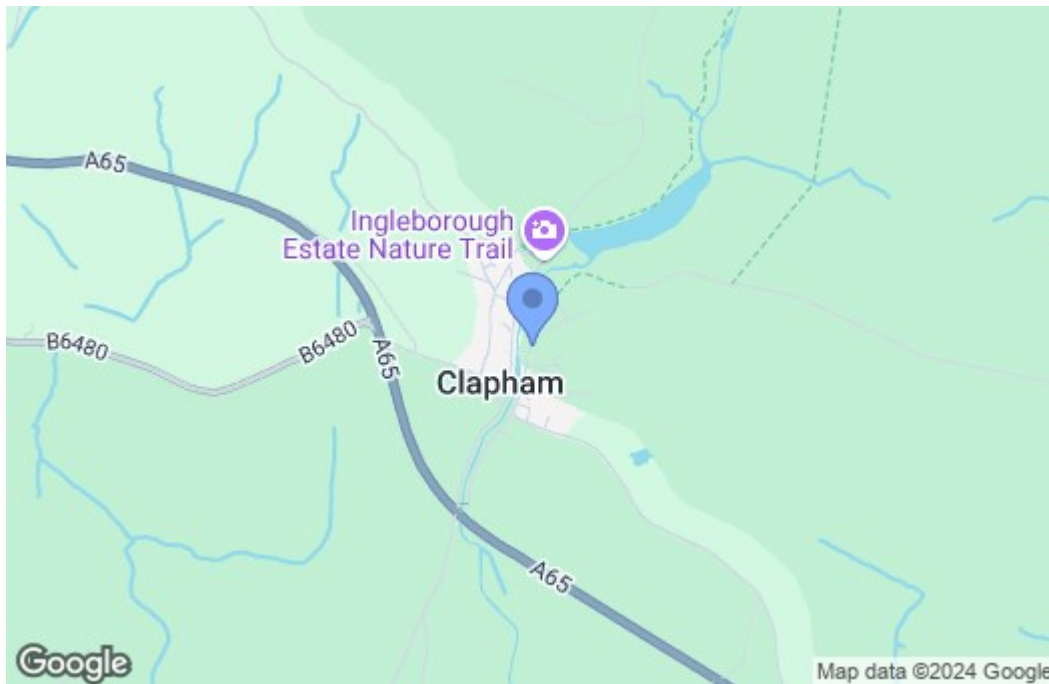
FLOOR PLANS

Please note, floor plans are not to scale and are for illustration purposes only. Plans are produced using PlanUp.

Floor Plan



Area Map



Energy Efficiency Graph

