



Tufnell Park Road, N7

£500,000

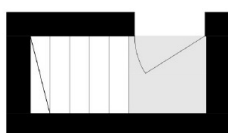
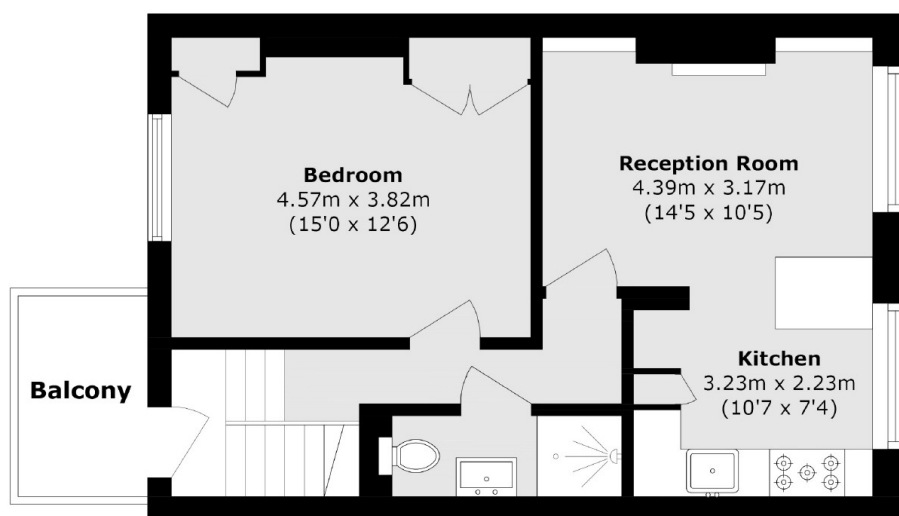
A well-presented and spacious one bedroom flat on the top floor of a Victorian conversion. The property offers a large open plan reception area and kitchen, and a good-sized double bedroom with built-in storage.

Located in the heart of Tufnell Park and close to the many shops, restaurants and cafés on both Fortess Road and Holloway Road. Tufnell Park underground station (Northern line) is at the end of the road.

Features

- Share of Freehold
- Open Plan
- Great Transport Links
- One Bedroom
- Top Floor Flat
- Private Terrace

Tufnell Park Road, London, N7



Third Floor

Second Floor

Total area (approx.): 55.4 sq. m (596.3 sq. ft)

Balcony area (approx.): 4.2 sq. m (45.2 sq. ft)