



Mercers Road, N19

£650,000

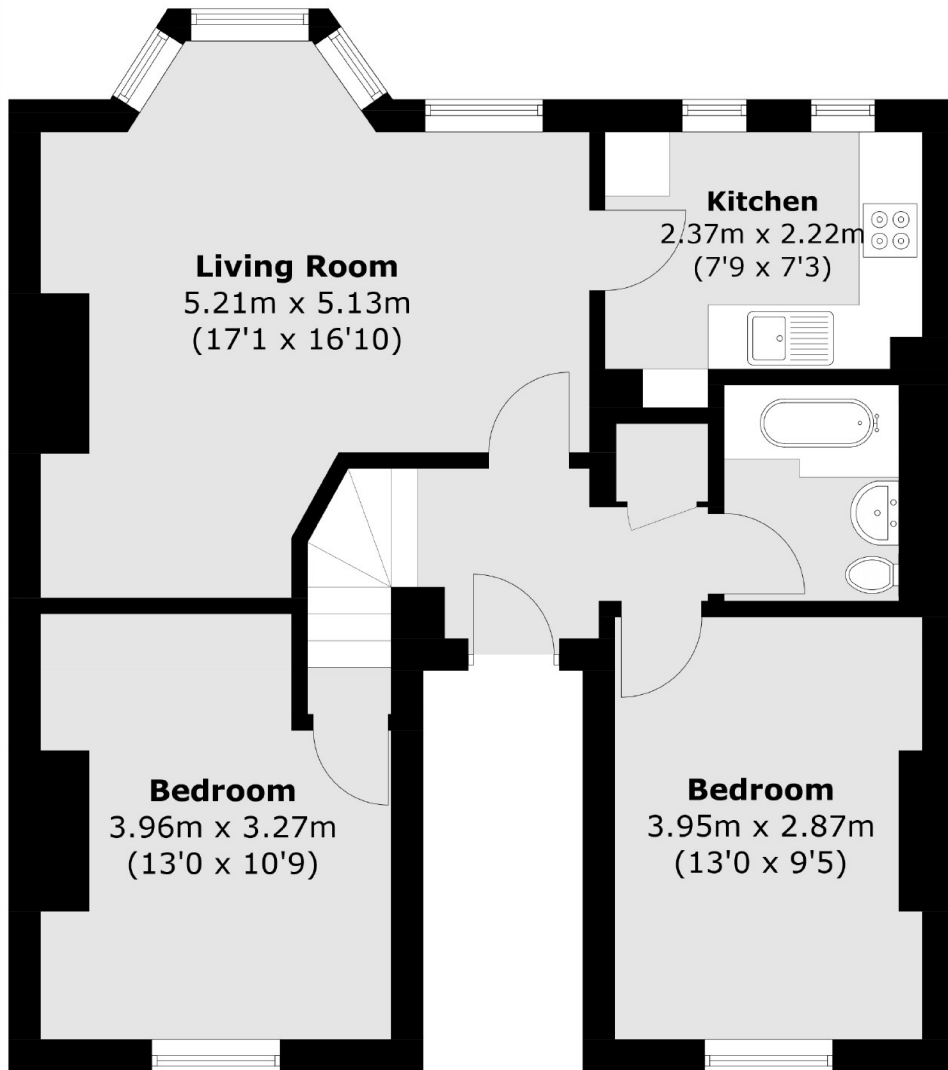
Situated on one of Tufnell Park's most sought after roads, a two double bedroom split-level apartment on the second floor of a Victorian house with a separate kitchen, a living room and a bathroom.

Mercers Road is ideally located close to Tufnell Park station (Northern line), Upper Holloway (Overground) and the diverse array of boutique shops, cafés and restaurants on Fortess Road.

Features

- Two Bedrooms
- Victorian Conversion
- Split-Level
- Separate Kitchen
- Share of Freehold
- Residential Road

Mercers Road, London, N19



Total area (approx.): 63.6 sq. m (684.6 sq. ft)