



Anson Road, N7

£400,000

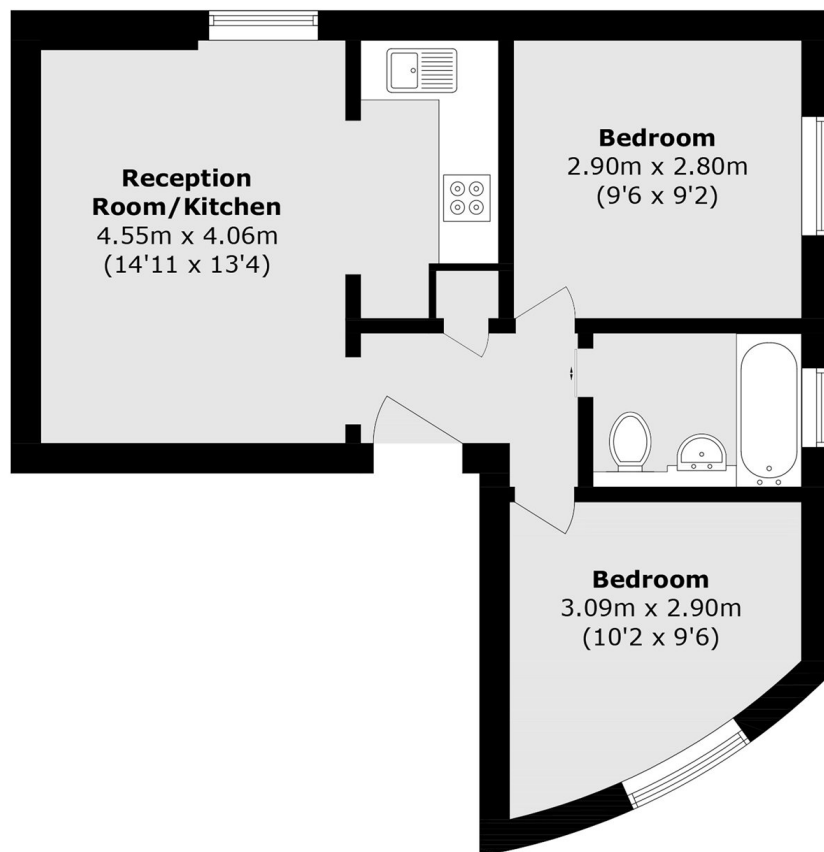
A very well-presented two bedroom apartment within a sought after Victorian mansion block. The apartment is situated on the ground floor, and benefits from a lovely communal garden.

Anson Road is a tree-lined road within half a mile of Tufnell Park tube (Northern line) and within a mile of Kentish Town station (Northern line & Thameslink) and Caledonian Road tube (Piccadilly line).

Features

- Two Bedrooms
- Open Plan Reception
- Ground Floor Flat
- Communal Garden
- Good Transport Links
- Victorian Mansion Block

Anson Road, London, N7



Total area (approx.): 40.3 sq. m (433.7 sq. ft)