



Churchill Road, NW5

£1,995,000

Dexters



Churchill Road, NW5

A striking four bedroom family home, situated just a short walk from the Heath, seamlessly blending period character with contemporary design and cutting edge sustainability.

This unique home boasts bay windows, original period features, and a spacious open plan kitchen, dining, and living area overlooking a private garden. The ground floor also includes a stylish bathroom and a separate utility room. Upstairs, the first floor offers two generous double bedrooms, a family bathroom, and a charming library with access to a private balcony. The top floor features two bright and airy double bedrooms. A secure side passageway provides excellent storage for bikes and garden equipment.

This Eco friendly, gas-free home features an air source heat pump and 14 solar panels generating 3.36MW annually. Reclaimed materials include science lab kitchen worktops, a French church floor, and library flooring from Barnsley Council. High insulation, Grey water recycling, and mostly double glazing complete the sustainable design.

Churchill Road is ideally placed for the local shopping facilities of Dartmouth Park, the charming street cafés of Swains Lane and the rolling acres of Hampstead Heath.

Features

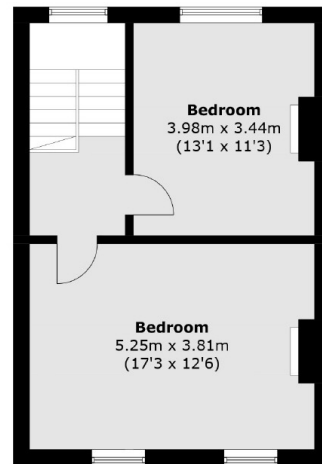
- Four Bedrooms
- Two Bathrooms
- Recently Refurbished
- Eco Friendly
- Private Garden
- Close to the Heath



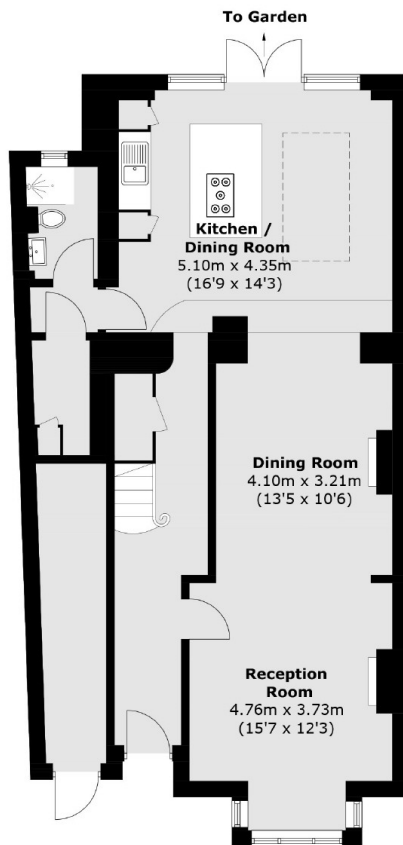




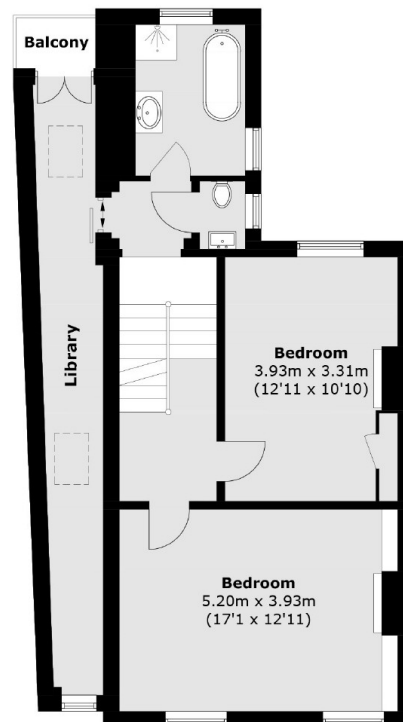
Churchill Road, London, NW5



Second Floor



Ground Floor



First Floor

Total area (approx.): 176.6 sq. m (1,901.0 sq. ft)
External Storage : 7.0 sq. m (75.3 sq. ft)
Balcony: 1.4 sq. m (15.0 sq. ft)