



## Wedmore Street, N19

### £400,000

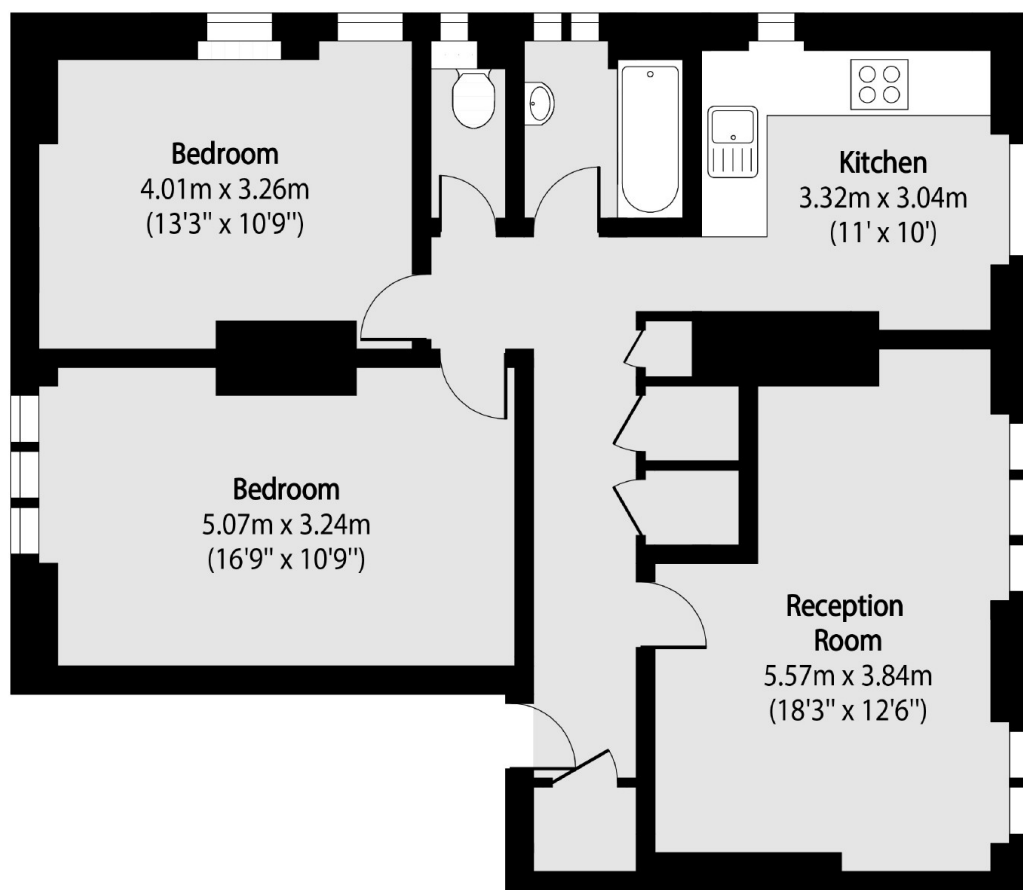
A well-presented two bedroom apartment, set within a detached red brick mansion block. The property features a spacious reception room, a separate kitchen, and is conveniently located on the ground floor.

The property is within easy reach of local shops, cafés, and restaurants, with excellent transport links nearby, including Archway (Northern line) and Upper Holloway (Overground) stations, both just a short walk away.

### Features

- Two Double Bedrooms
- Separate Kitchen
- Large Reception Room
- Great Transport Links
- Close to Whittington Park
- Allocated Parking Space

# Wedmore Street, London, N19



Total area (approx): 79.44 sq m (855 sq. ft)