



Partington Close, N19

£450,000

A three bedroom split-level flat located in the London Borough of Islington. This property offers a private garden, a separate kitchen and living room space, and lots of storage throughout.

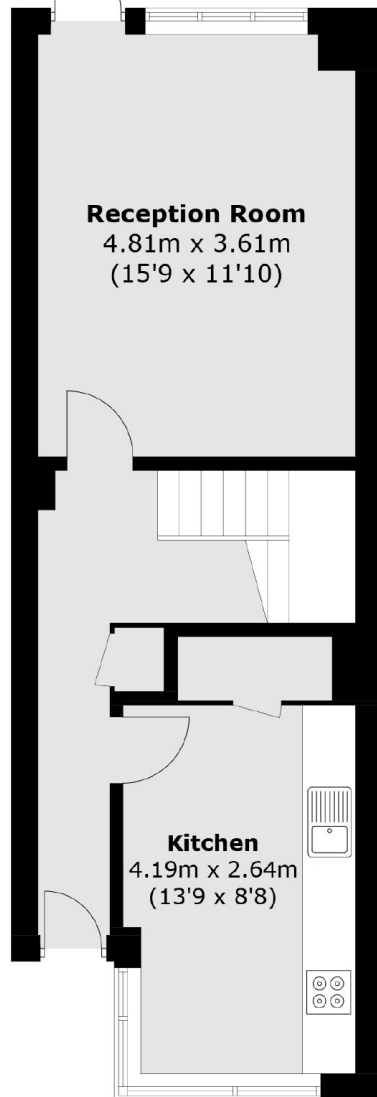
Partington Close is a private road close to Archway tube station along with Upper Holloway and Crouch Hill overground stations. Numerous shops, cafés and restaurants can be found nearby on Holloway Road.

Features

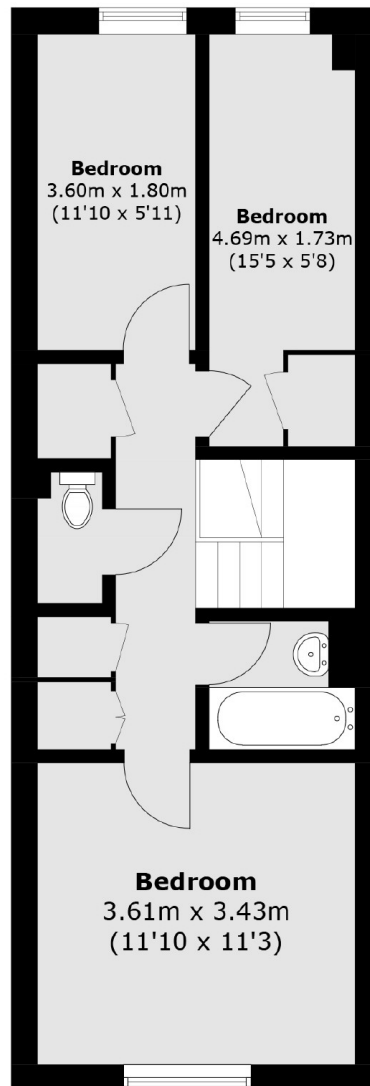
- Three Bedrooms
- Private Garden
- Double Glazed Windows
- Private Road
- Great Transport Links
- Split-Level

Partington Close, London, N19

To Garden



Ground Floor



First Floor

Total area (approx.): 83.3 sq. m (896.6 sq. ft)