



Bellgate Mews, NW5
£1,500,000

Dexters



Bellgate Mews, NW5

Located in a highly sought after gated mews in Dartmouth Park, this architect designed three bedroom house offers stylish, low-maintenance living, just a short walk from Hampstead Heath.

Set over two floors, the property features a striking spiral staircase and bright, well-planned interiors. The separate kitchen and reception room open onto a private, south-facing decked patio, ideal for relaxing or entertaining.

Upstairs, there are three well-sized bedrooms, including a spacious principal bedroom with en suite. The layout is flexible and works well for families, professionals, or home working.

Bellgate Mews, located in the heart of Dartmouth Park, is a private road of just eight houses, moments from Hampstead Heath and the charming local cafés and independent shops on Swains Lane.

Features

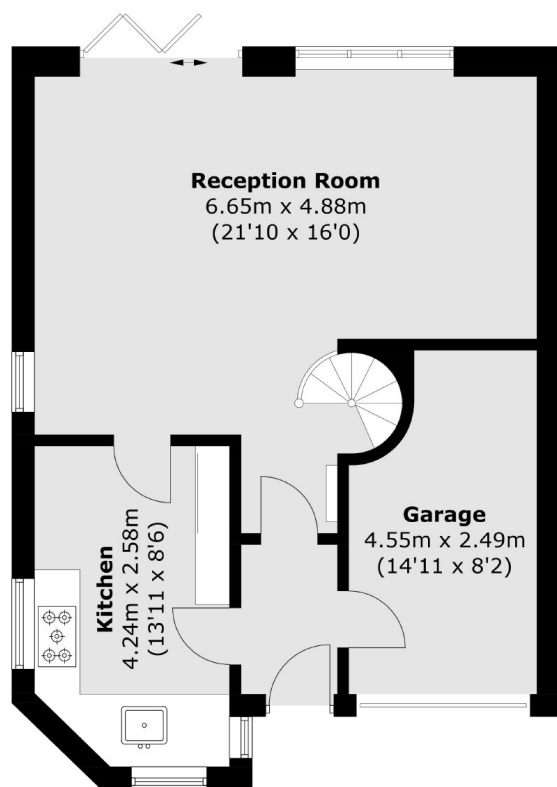
- Three Bedrooms
- Gated Mews
- Feature Spiral Staircase
- Architect Designed
- Single Garage
- Private Decked Patio



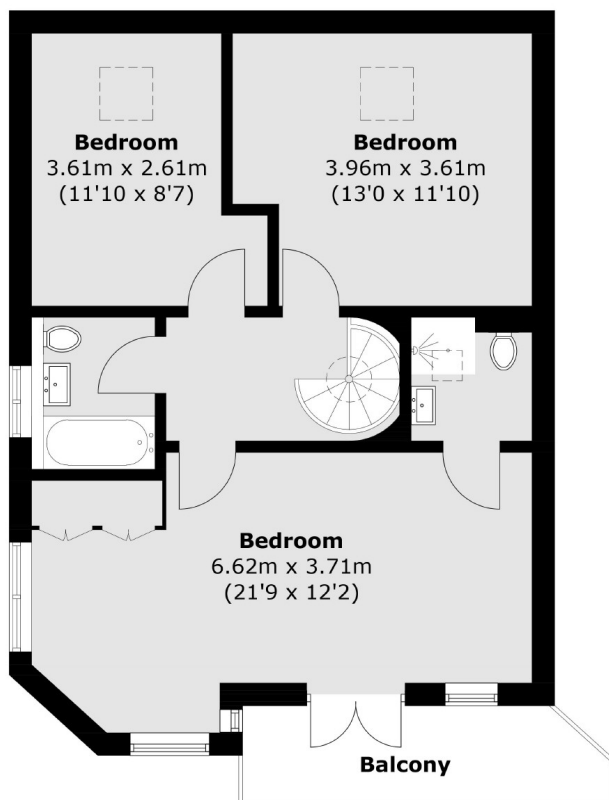




Bellgate Mews, London, NW5



Ground Floor



First Floor

Total area (approx.): 115.5 sq. m (1,243.2 sq. ft)
(Including Garage)
Balcony area : 5.9 sq. m (63.5 sq. ft)