



Carleton Road, N7

£700,000

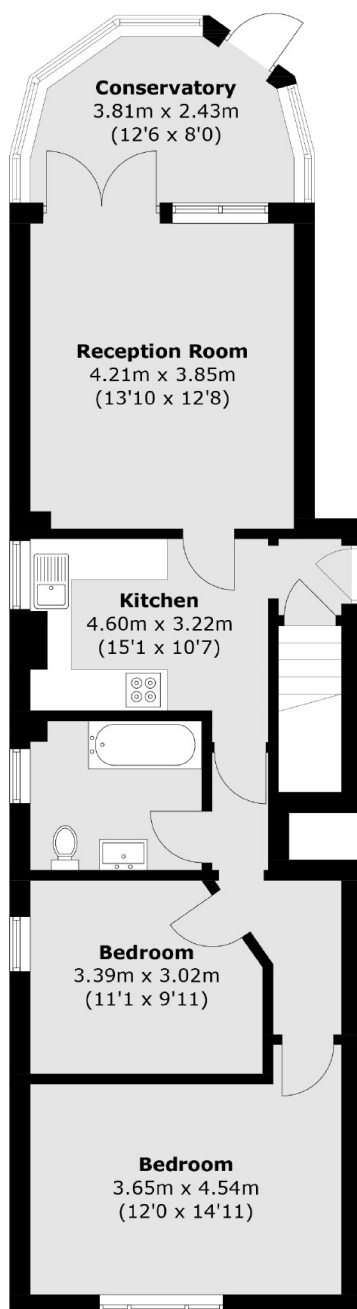
A wonderful garden flat set in an impressive Victorian detached house. The property has two spacious bedrooms, a separate kitchen and reception space, plus a conservatory with direct access to a large, private garden.

Carleton Road is ideally placed for transport links and local shops. Tufnell Park and Caledonian Road stations are within a mile, providing ease of access to Kings Cross, as are Tufnell Park playing fields and Hampstead Heath.

Features

- Large Private Garden
- Share of Freehold
- Period Conversion
- Two Bedrooms
- Conservatory
- Great Transport Links

Carleton Road, London, N7



Total area (approx.): 75.7 sq. m (814.8 sq. ft)

Dexters

Dartmouth Park & Tufnell Park
64 Chetwynd Road
Dartmouth Park
London
Sales
020 7284 0101

Energy Rating: E. We aim to make our particulars both accurate and reliable. However they are not guaranteed; nor do they form part of an offer or contract. If you require clarification on any points then please contact us, especially if you're traveling some distance to view. Please note that appliances and heating systems have not been tested and therefore no warranties can be given as to their good working order.

 **RICS** | Regulated
Estate Agent
and Letting Agent

[dexters.co.uk](https://www.dexters.co.uk)