



## Anson Road, N7

### £1,000,000

A three double bedroom, two bathroom apartment blending period charm with rare outdoor space. The apartment has a large, open plan reception room/kitchen along with access to a private, south-facing garden.

Anson Road is just 0.4 miles from Tufnell Park station, and within a mile of Kentish Town. Independent cafés, green spaces including Hampstead Heath, and a highly regarded local primary school are all close by.

### Features

- Three Double Bedrooms
- Share of Freehold
- Far-Reaching Views
- Tree-Lined Road
- South-Facing Garden
- Victorian Conversion





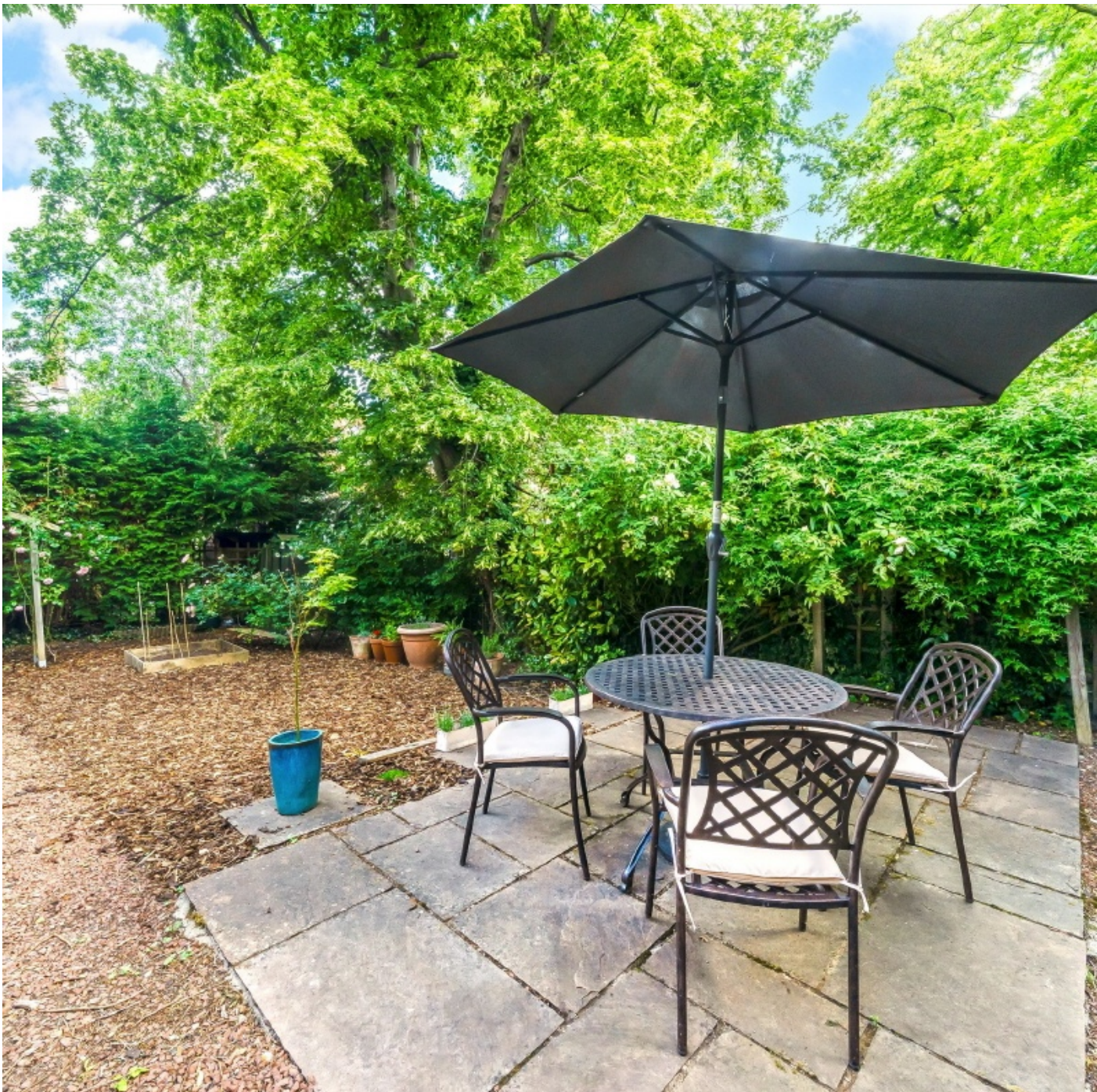
## Anson Road, N7

As you enter, you're welcomed by a generous hallway that connects each room with ease. At the front, a spacious, open plan reception room and kitchen enjoy stunning far-reaching views, with a large west facing window framing remarkable sunsets. Elegant period proportions meet contemporary living throughout, with a triple-aspect layout flooding the interiors with natural light.

The principal bedroom is quietly positioned at the rear and benefits from an en suite shower room, while two further double bedrooms are accessed from the central hallway. Thoughtful modern touches include a Nest smart heating system and water softener, with reduced-height loft storage offering valuable additional space.

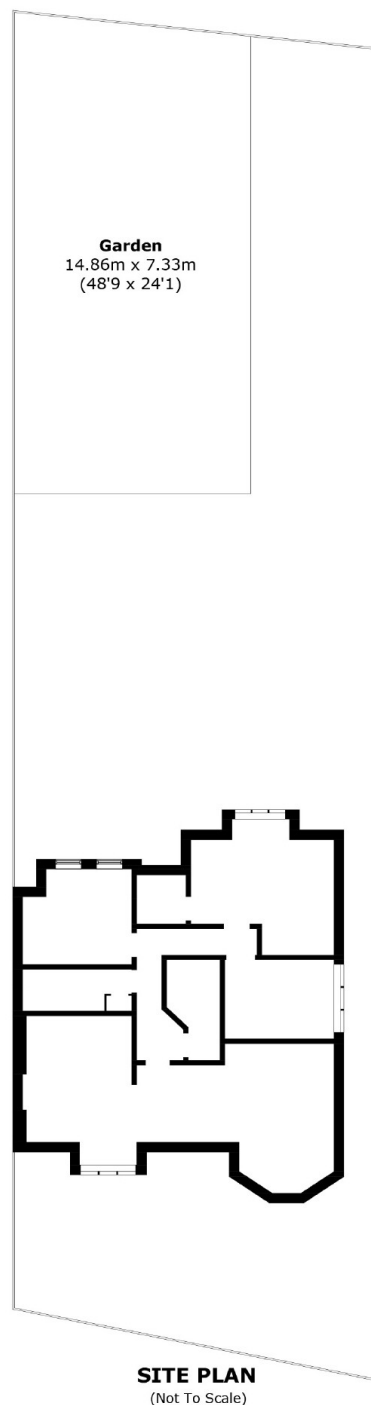
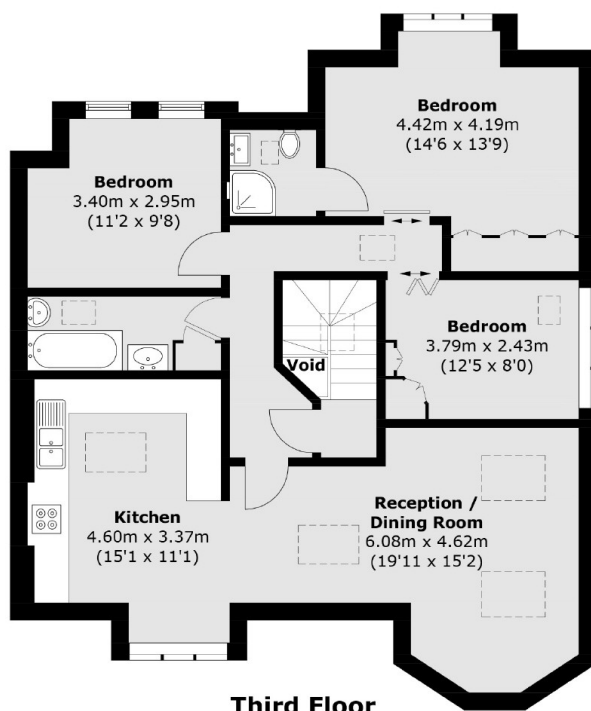
A standout feature is the rare, 1,000 sq ft private, south facing garden, partially walled and exceptionally secluded, once used as both a lawn and vegetable patch. This outdoor haven offers scope for personalisation and even the addition of a garden studio, subject to planning permission.







# Anson Road, London, N7



Total area (approx.): 89.6 sq. m (964.4 sq. ft)  
(Excluding Void)