



Bickerton Road, N19

£1,250,000

On the borders of Dartmouth Park, a characterful four bedroom Victorian family house retaining an array of original features, including exposed timber floors and fireplaces.

Bickerton Road is in a key position with a pleasant walk to Waterlow Park and the charming street cafés of Swains Lane just beyond, along with easy access to both Archway and Tufnell Park tube stations.

Features

- Four Double Bedrooms
- Family Bathroom
- Double Reception Room
- Kitchen/Breakfast Room
- Private Garden
- Cellar



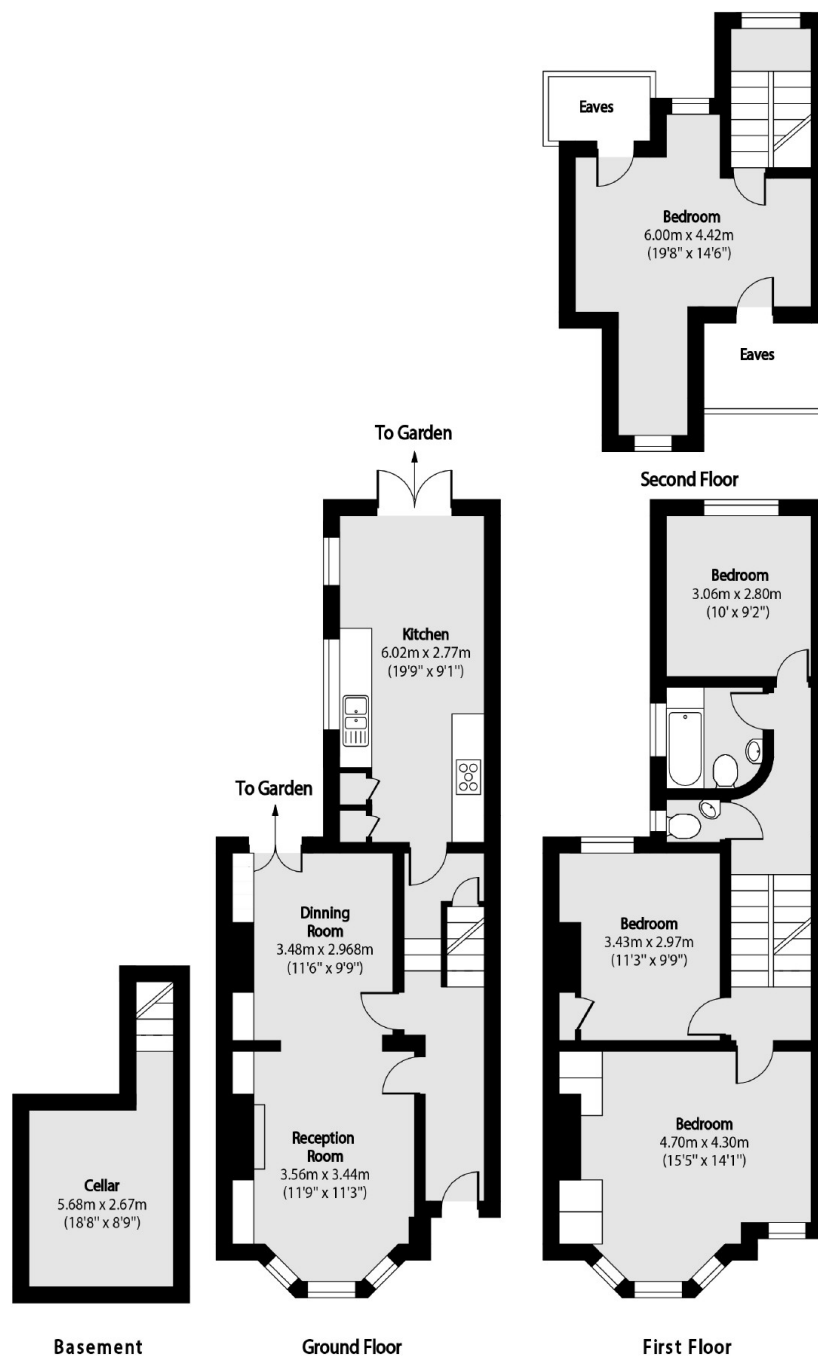
Bickerton Road, N19

The ground floor features a comfortable double reception room with wood flooring and a feature fireplace, a large eat-in kitchen/breakfast room and a useful cellar. There is direct access to the 45ft private rear garden from the kitchen.

On the first floor are three good sized bedrooms, including the principal bedroom with a large bay window and a fireplace. Upstairs, on the top floor, is a lovely eaved bedroom with garden views.



Bickerton Road, London, N19



Total area (approx): 123.64 sq m (1331 sq. ft)

(Excluding Eaves Storage & Cellar)

Cellar Total area (approx): 10.59 sq m (114 sq. ft)

Dexters

Dartmouth Park & Tufnell Park
64 Chetwynd Road
Dartmouth Park
London

Sales
020 7284 0101

Energy Rating: E. We aim to make our particulars both accurate and reliable. However they are not guaranteed; nor do they form part of an offer or contract. If you require clarification on any points then please contact us, especially if you're traveling some distance to view. Please note that appliances and heating systems have not been tested and therefore no warranties can be given as to their good working order.

RICS Regulated
Estate Agent
and Letting Agent

dexters.co.uk